

Ficha:

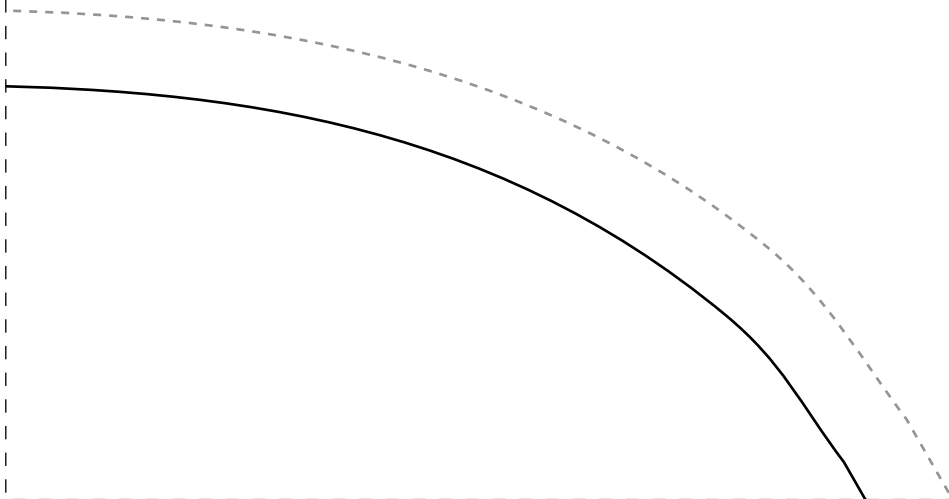
- Tecido plano 1,4m de largura
 - Indicado tecidos fluidos tipo viscose, viscolinho, linho chambray, etc
 - Barra com bainha 2cm
 - Decote com viés rebatido
 - 1,2m para os tamanhos 36-38
 - 1,3m para os tamanhos 40-42
 - 1,4m para os tamanhos 44-46
 - 1,5m para os tamanhos 48-50
 - 1,6m para os tamanhos 52-54
-

--	--

Instituto Diana Semana CMC - Ago Blusa Manga Bufo

Costas
1x-46

IDD19



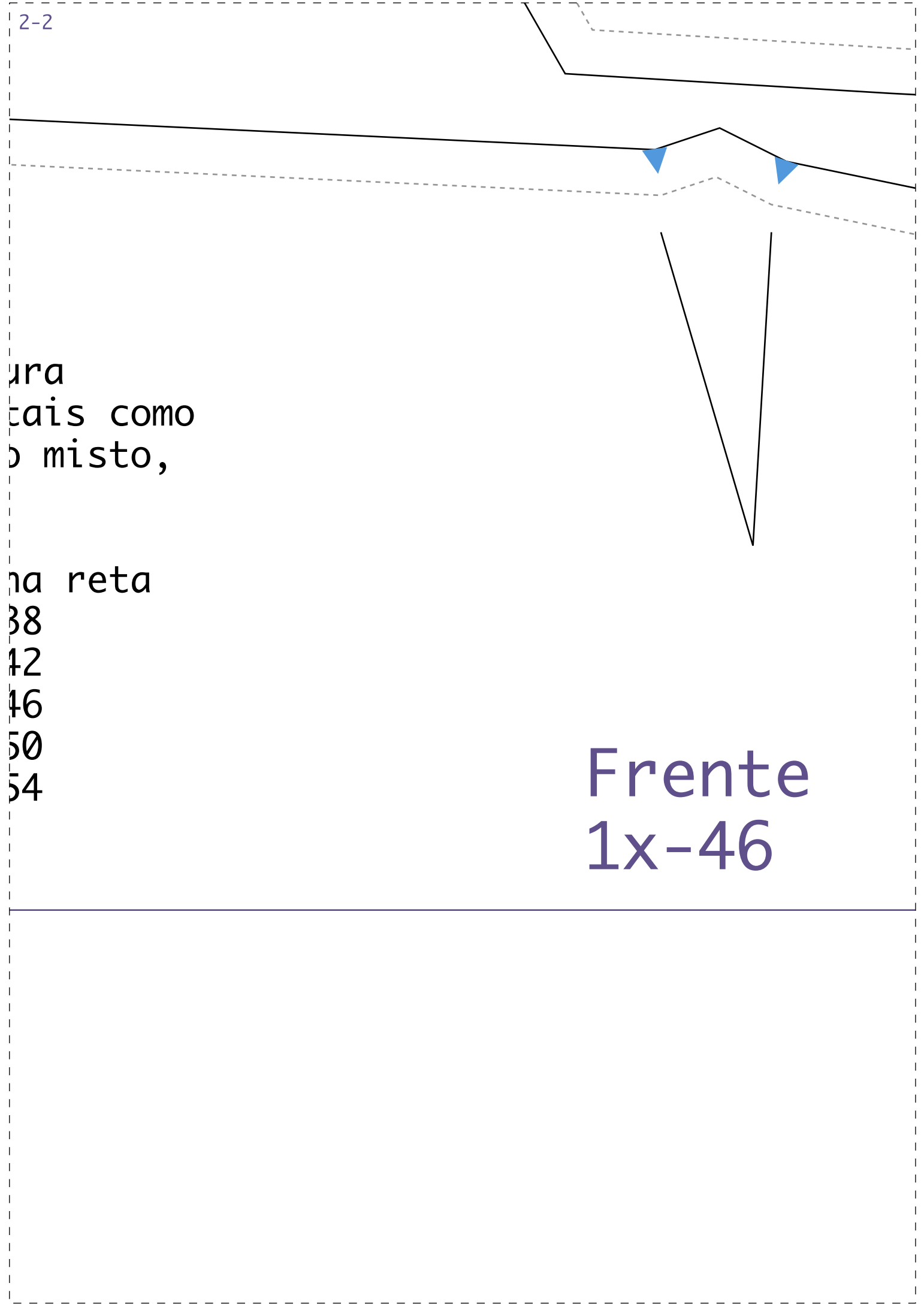
2-2

ura
tais como
o misto,

na reta

38
42
46
50
54

Frente
1x-46

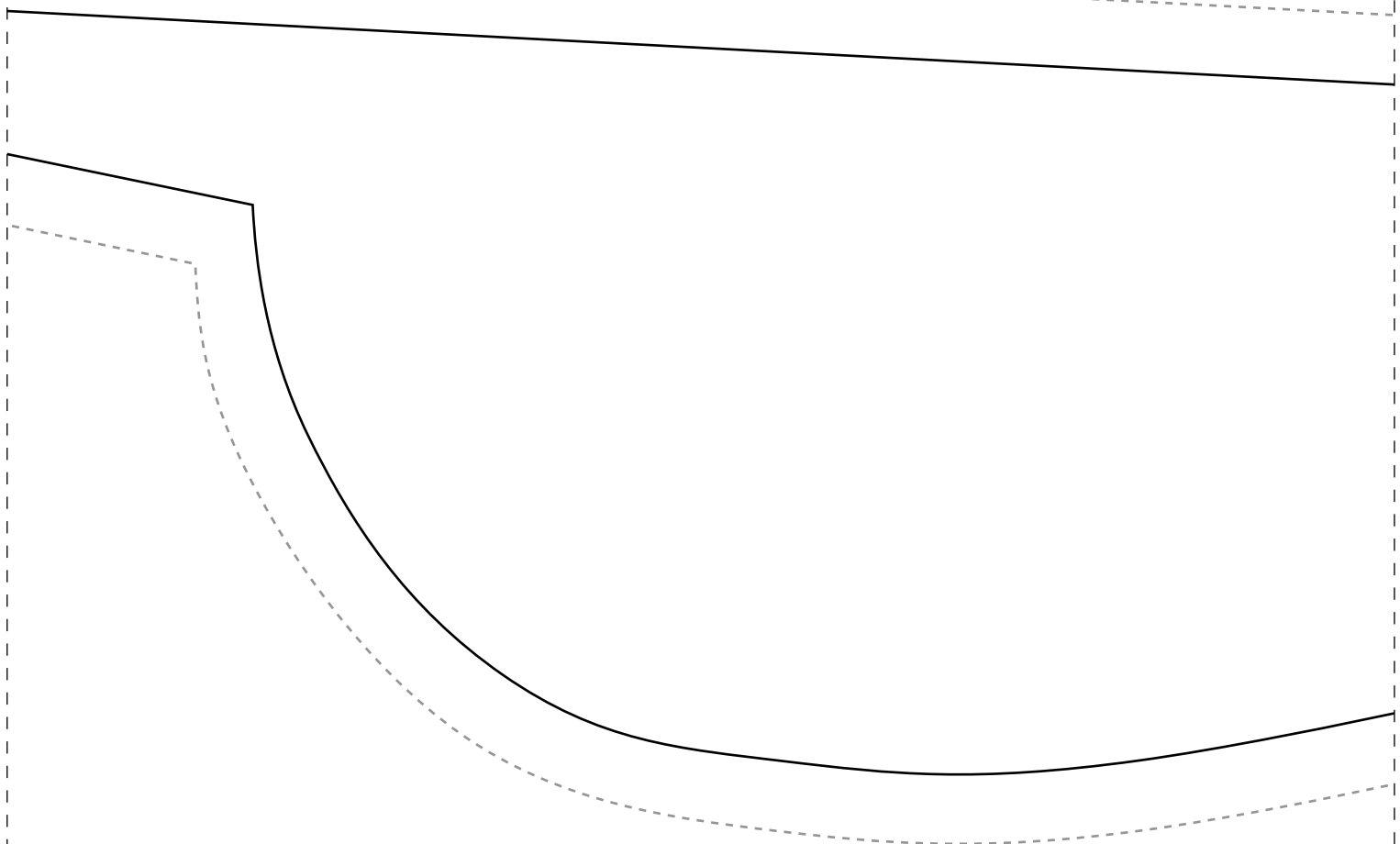


орбор

Demarchi
ra é Sua Vez
nte

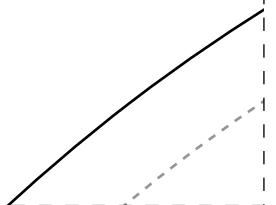


2-3



IDD19



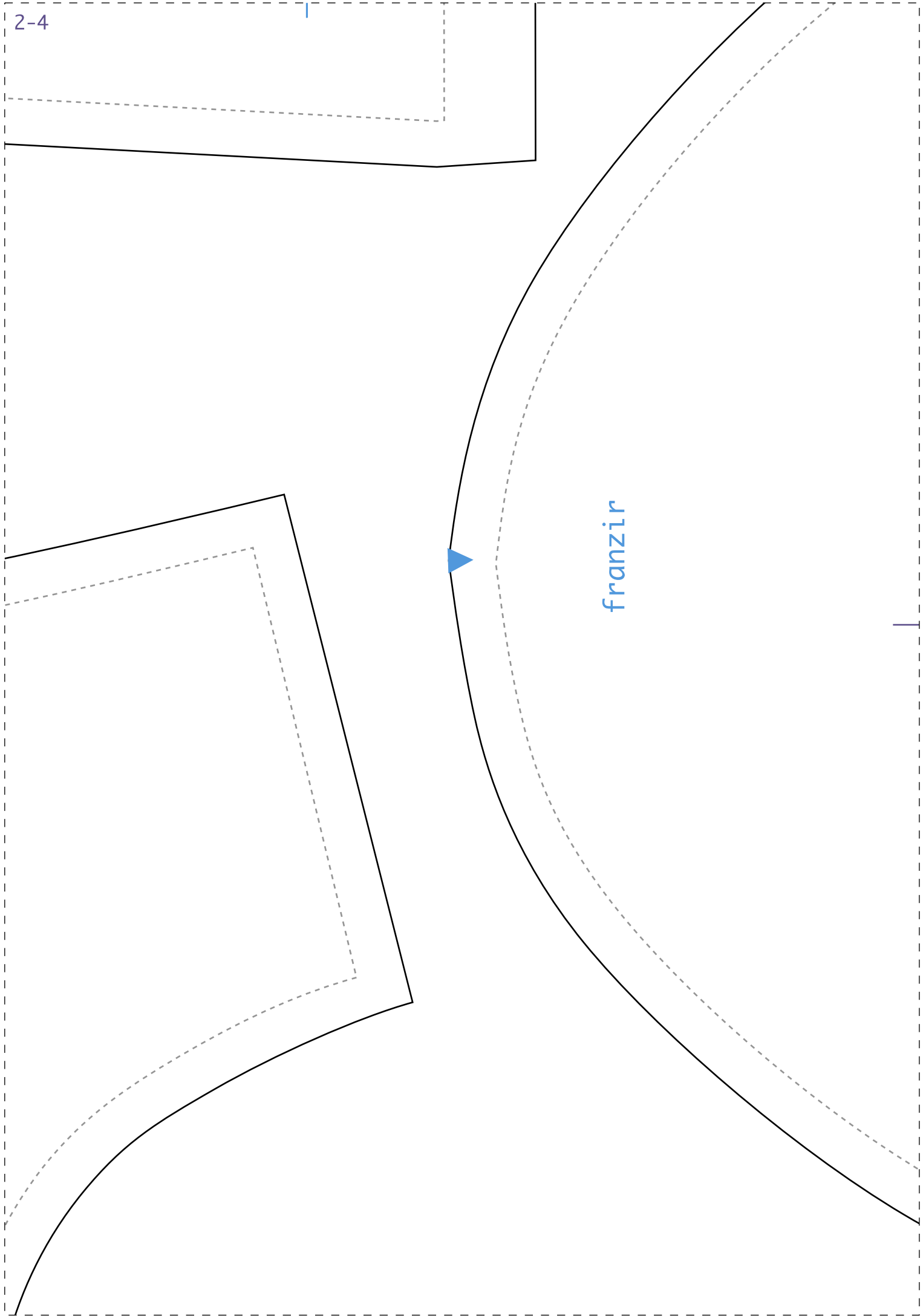


2-4

|

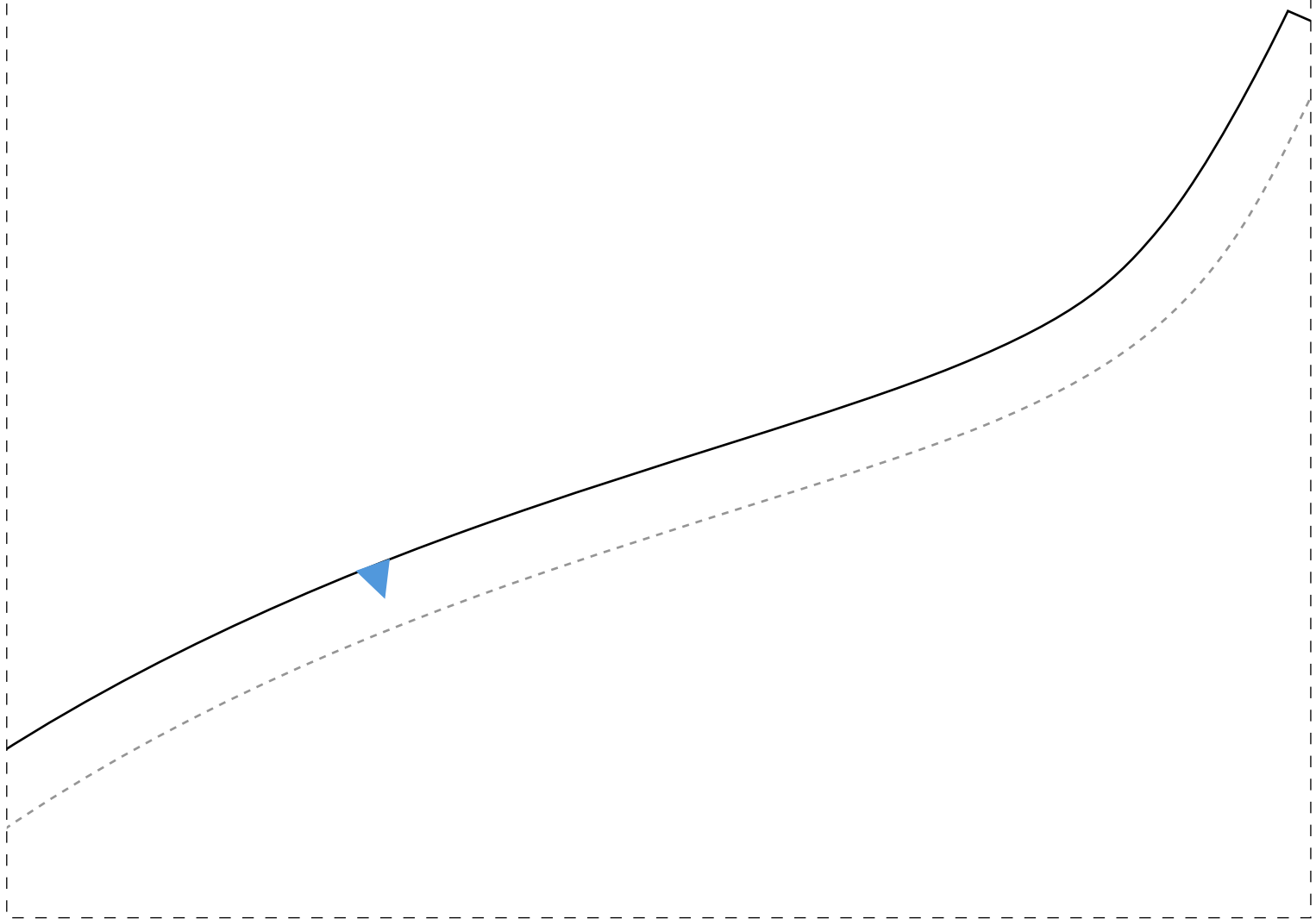
franzir

|



1-5

4cm



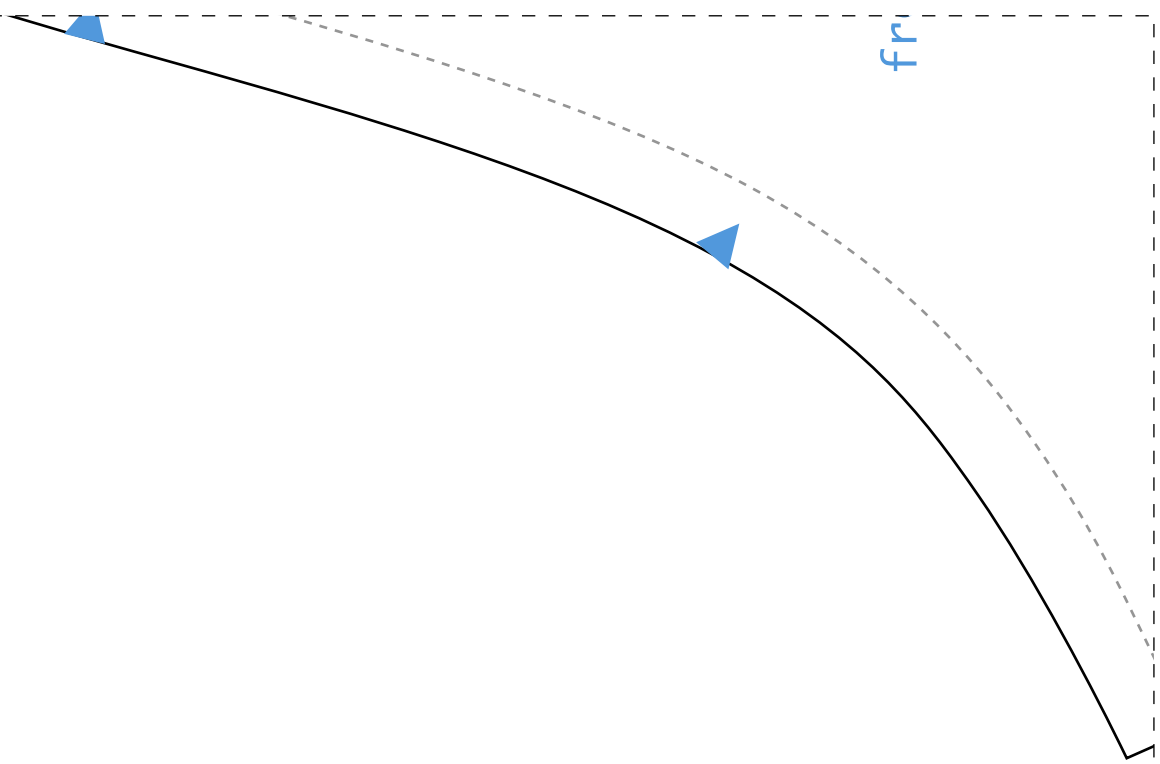
Instituto Diana Dem Semana CMC - Agora Blusa Manga Bufante

Manga
2x-46

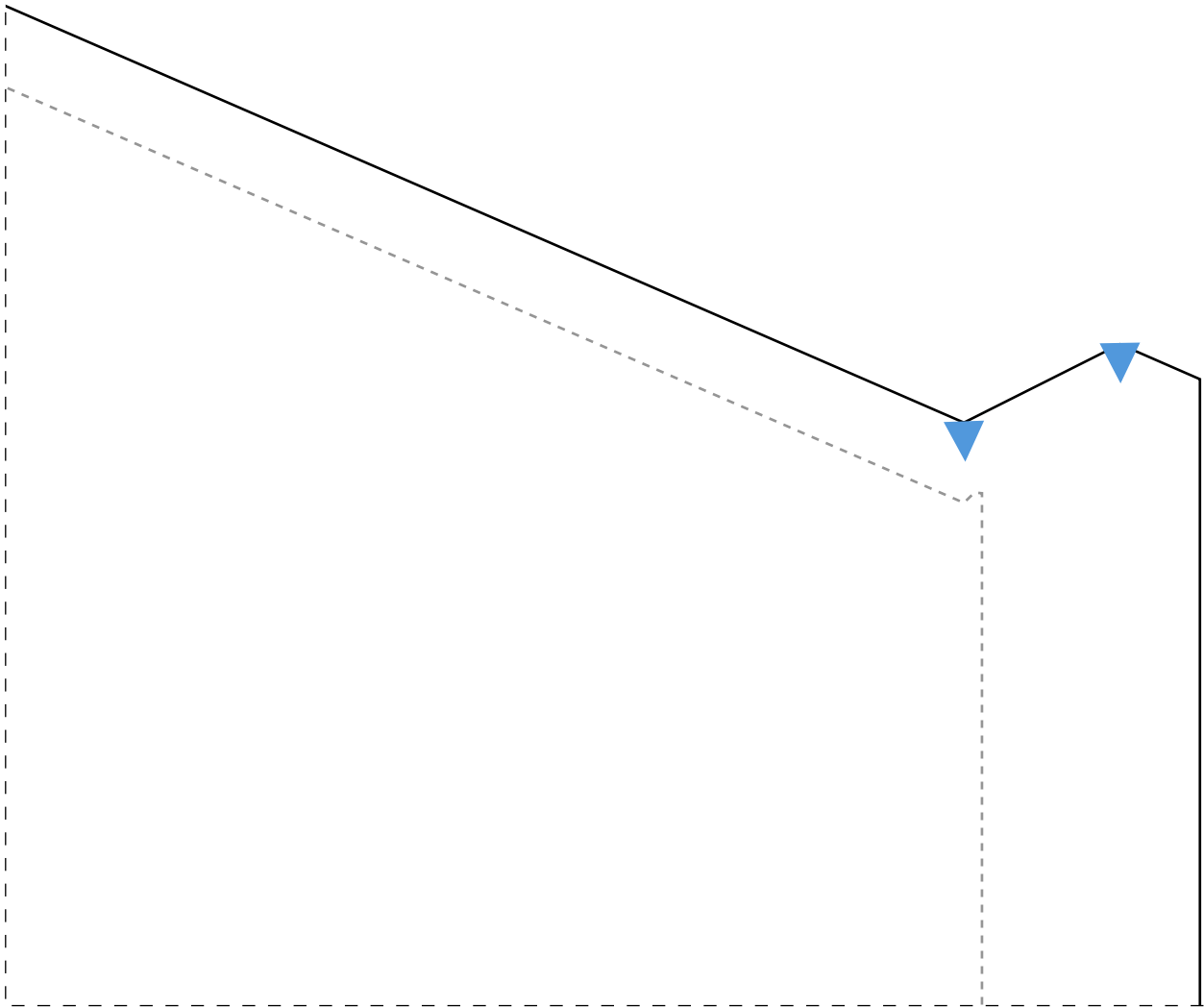
IDD19

3-5

fr



1-6



archi

é Sua Vez



3-6

