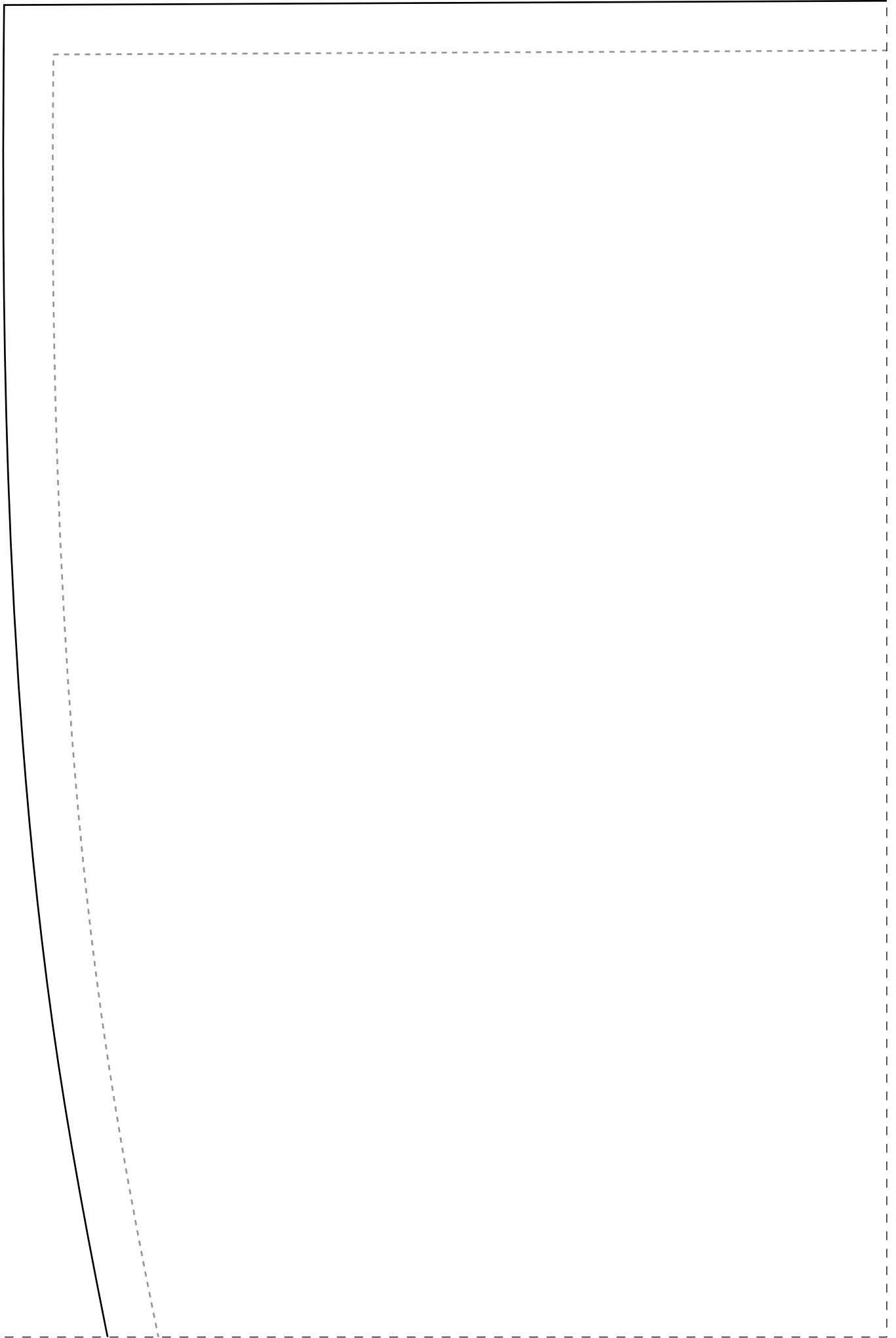
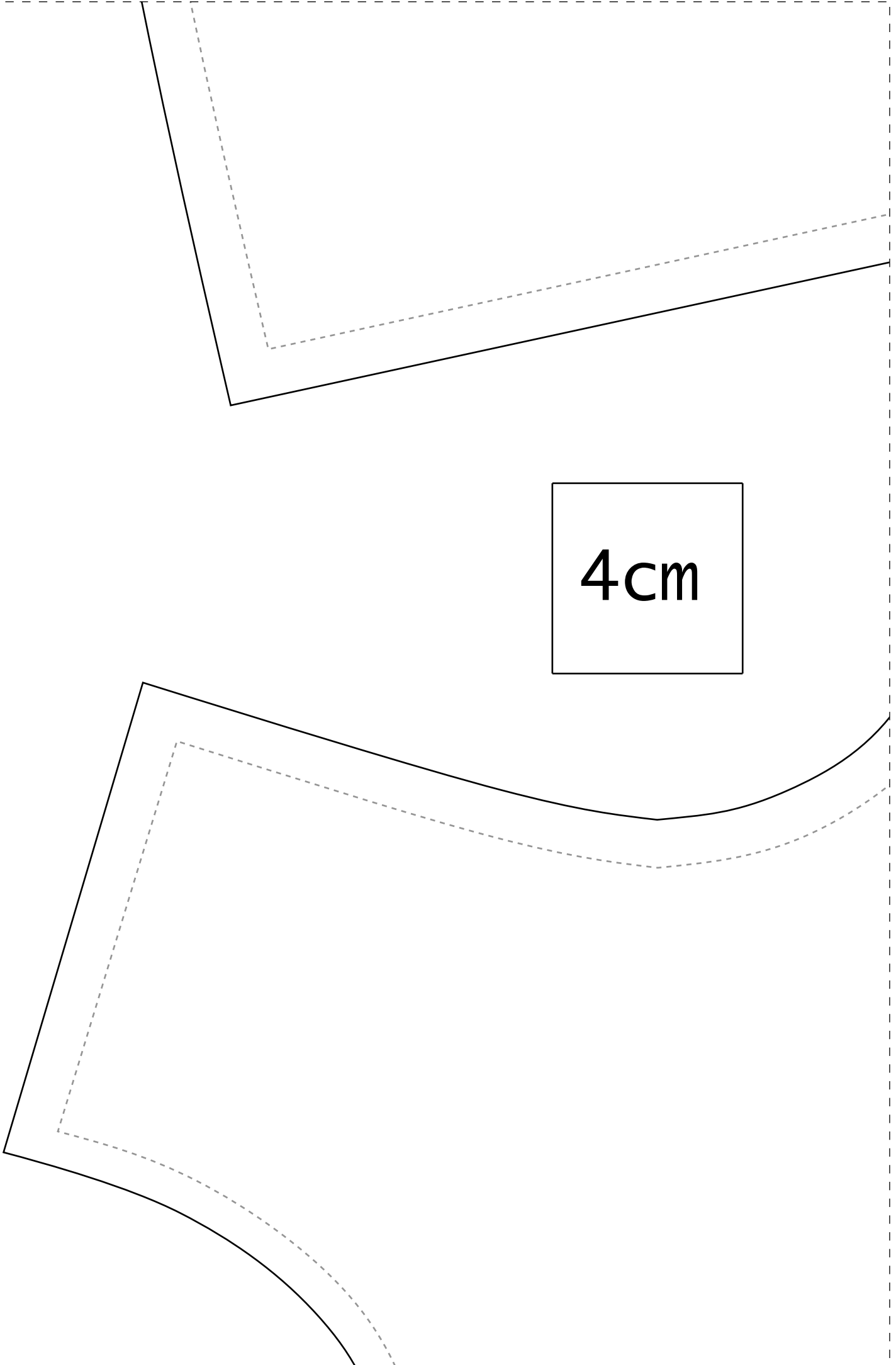
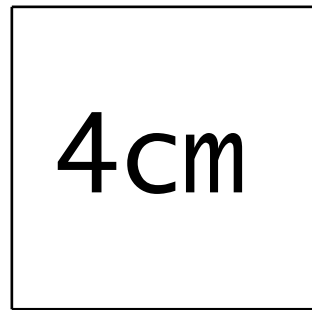


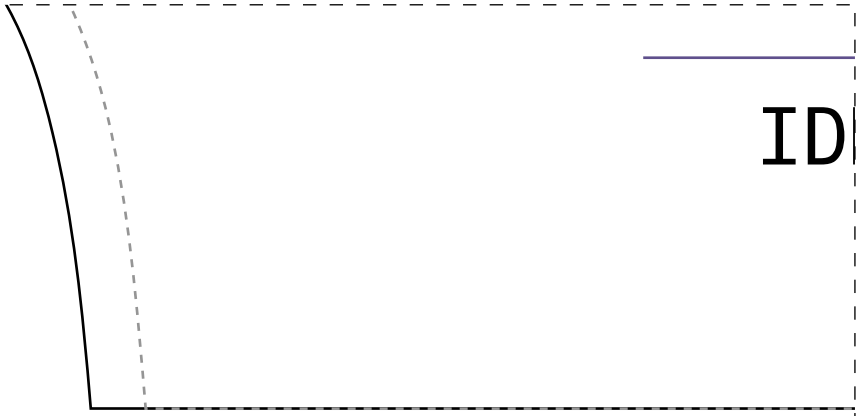
1-1



2-1

4cm

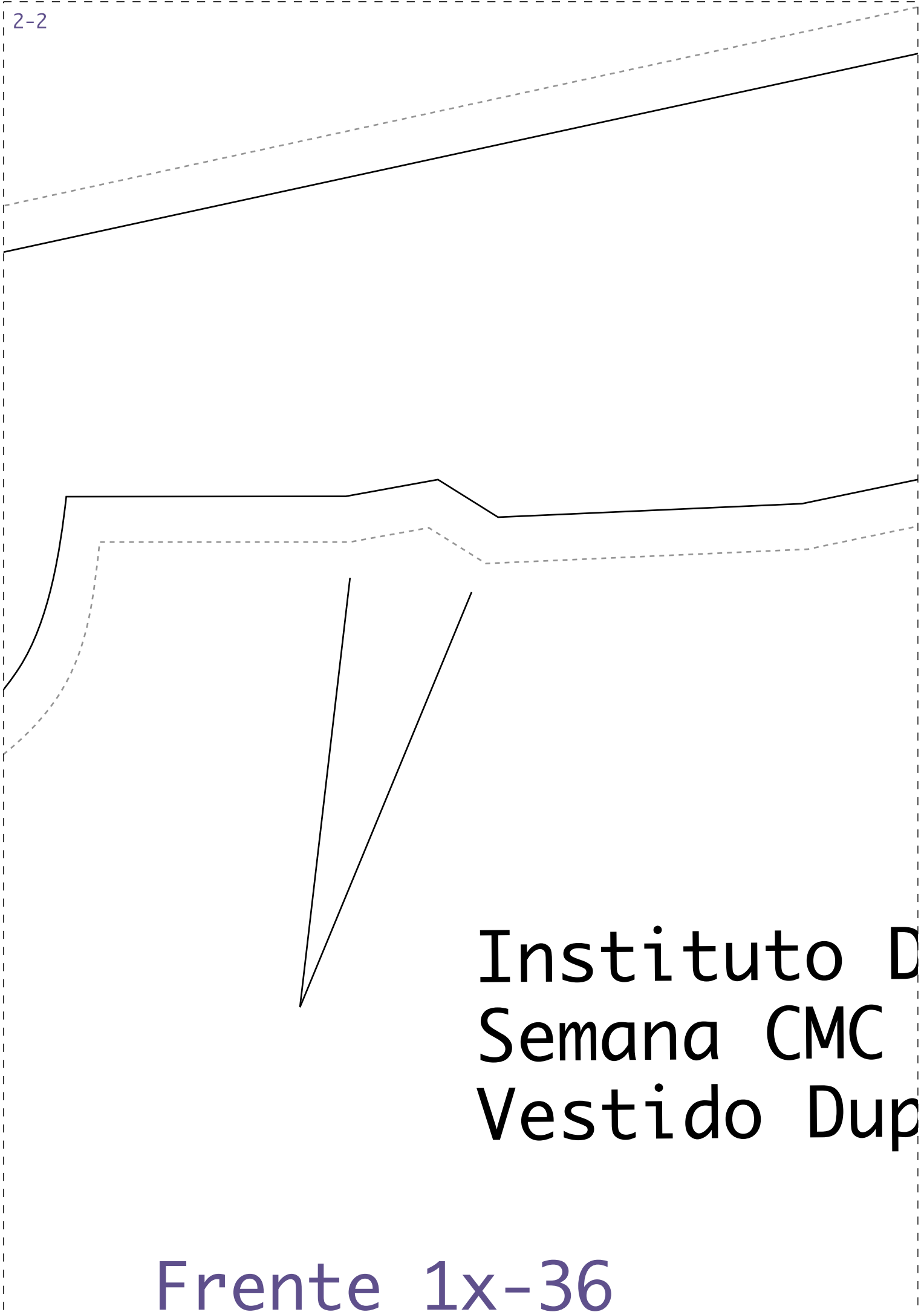




Costas 2x-

IDD21

2-2



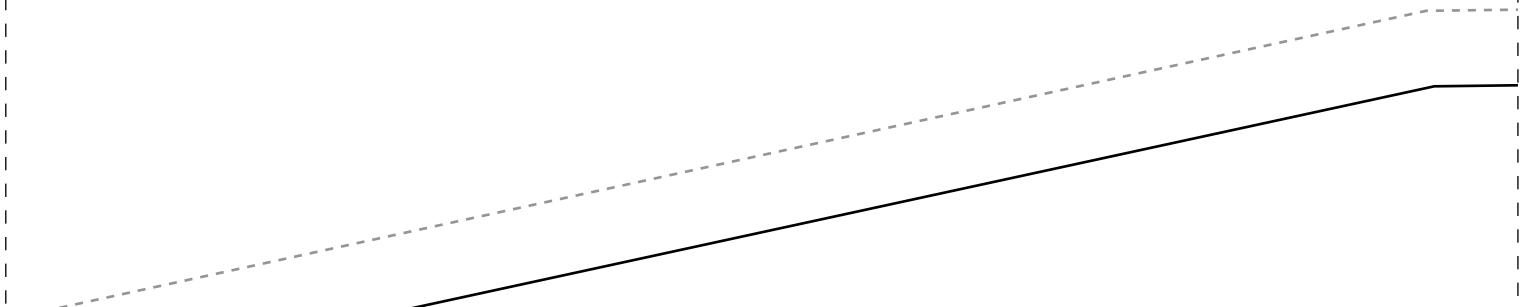
Instituto D
Semana CMC
Vestido Dup

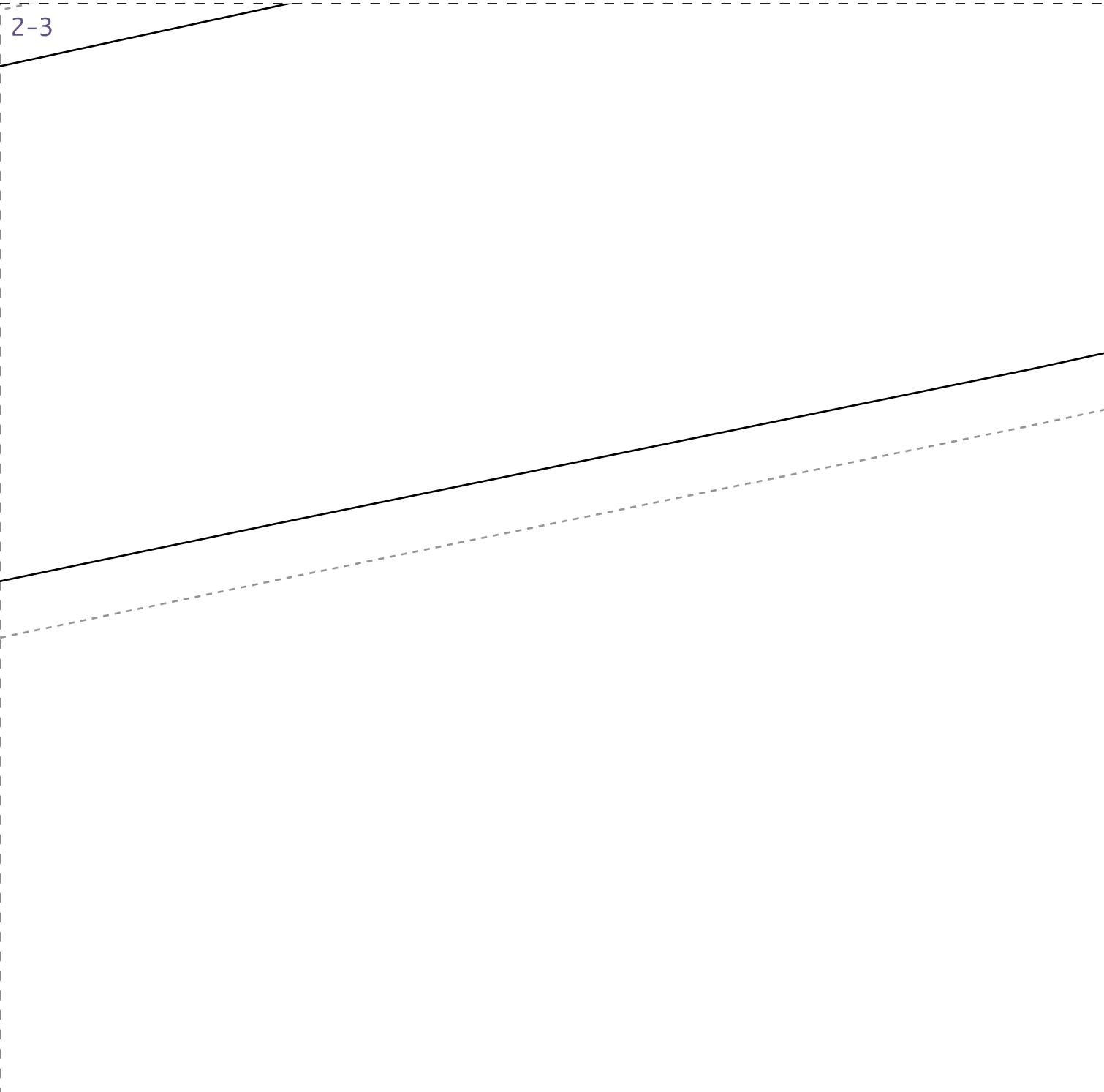
Frente 1x-36

D21

1-3

36





Diana Demarchi
- Agora é Sua Vez
La Face



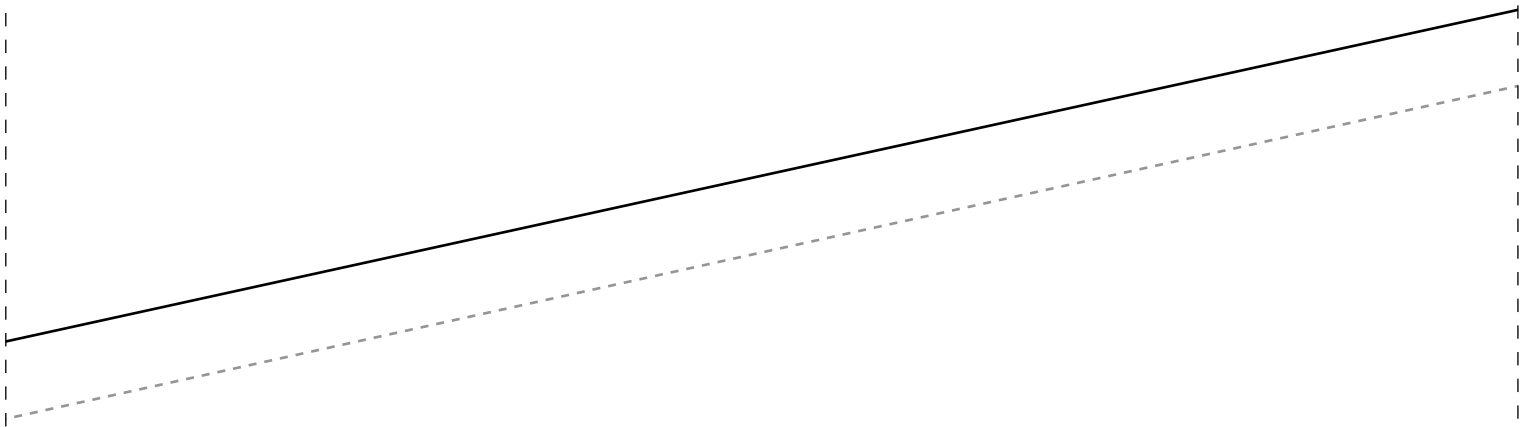
DOBRA



Ficha Técnica:

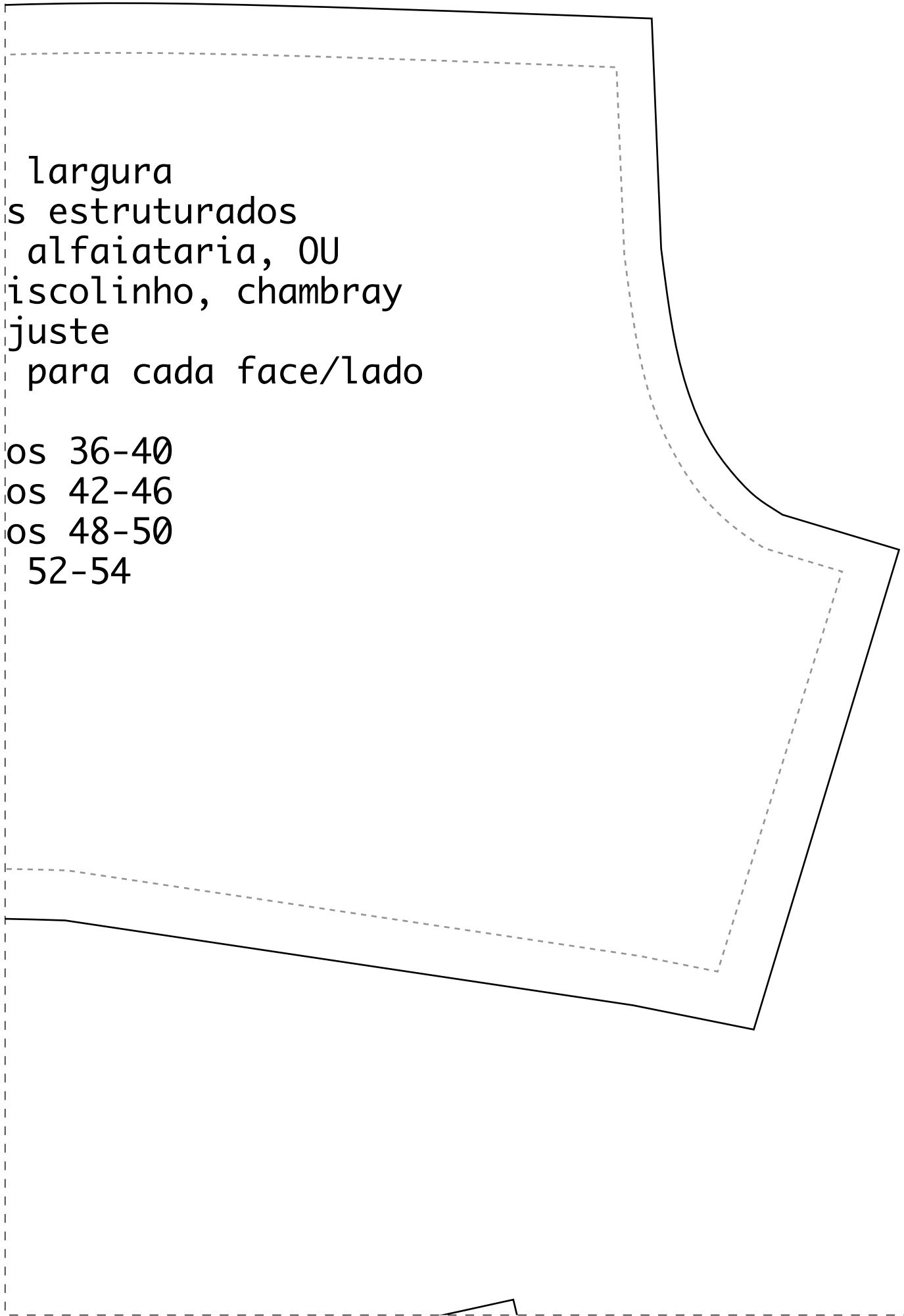
- Tecido plano 1,4m de
- Indicado Tecidos mais de inverno como crepe viscose, tricoline, v
- Busto com pence de a
- Quantidade de tecido do vestido:
 - =>1,2m para os tamanh
 - =>1,3m para os tamanh
 - =>1,7m para os tamanh
 - =>2m para os tamanhos

2-4



largura
s estruturados
alfaiataria, OU
discolinho, chambray
juste
para cada face/lado

- os 36-40
- os 42-46
- os 48-50
- 52-54



2-5

