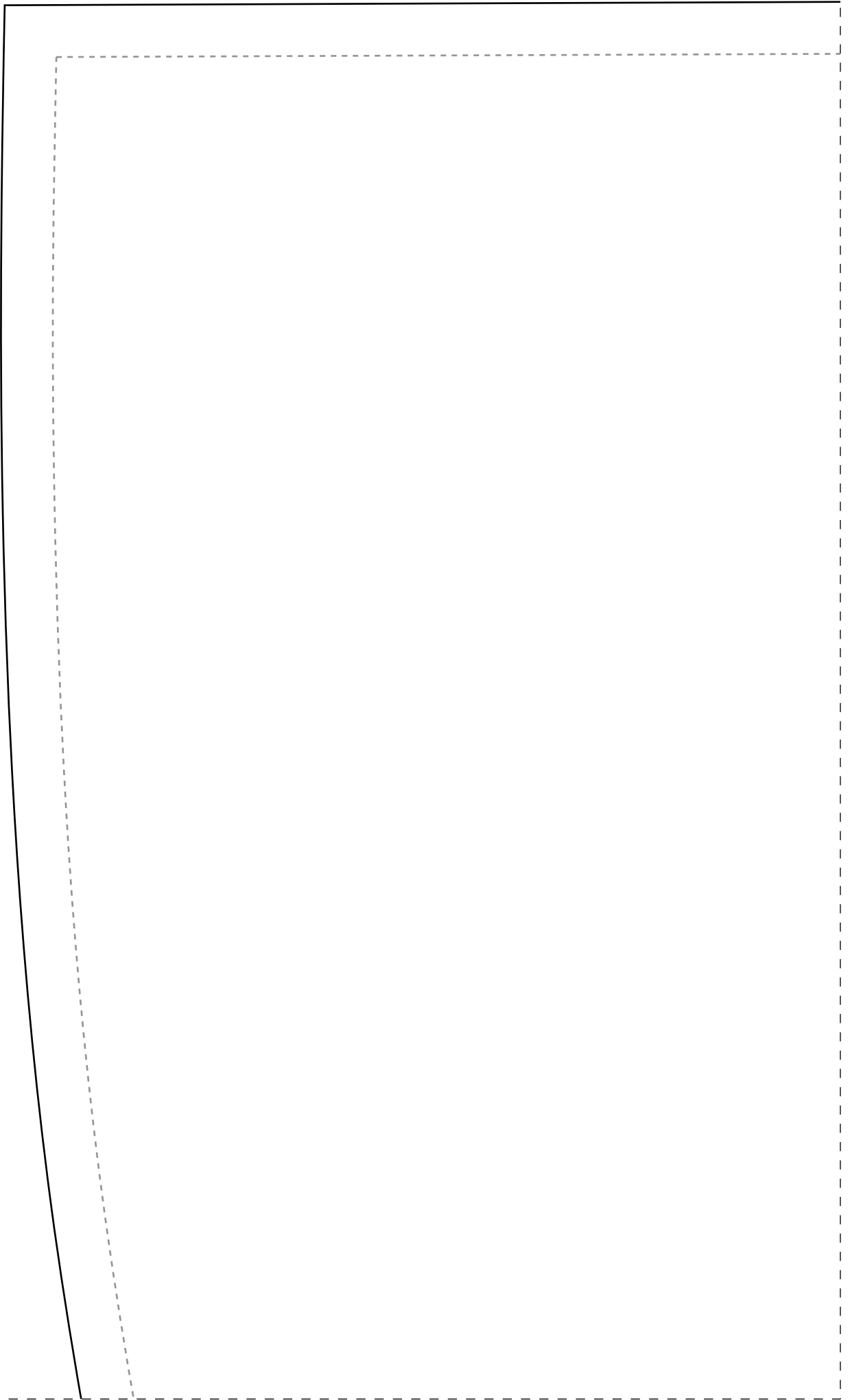
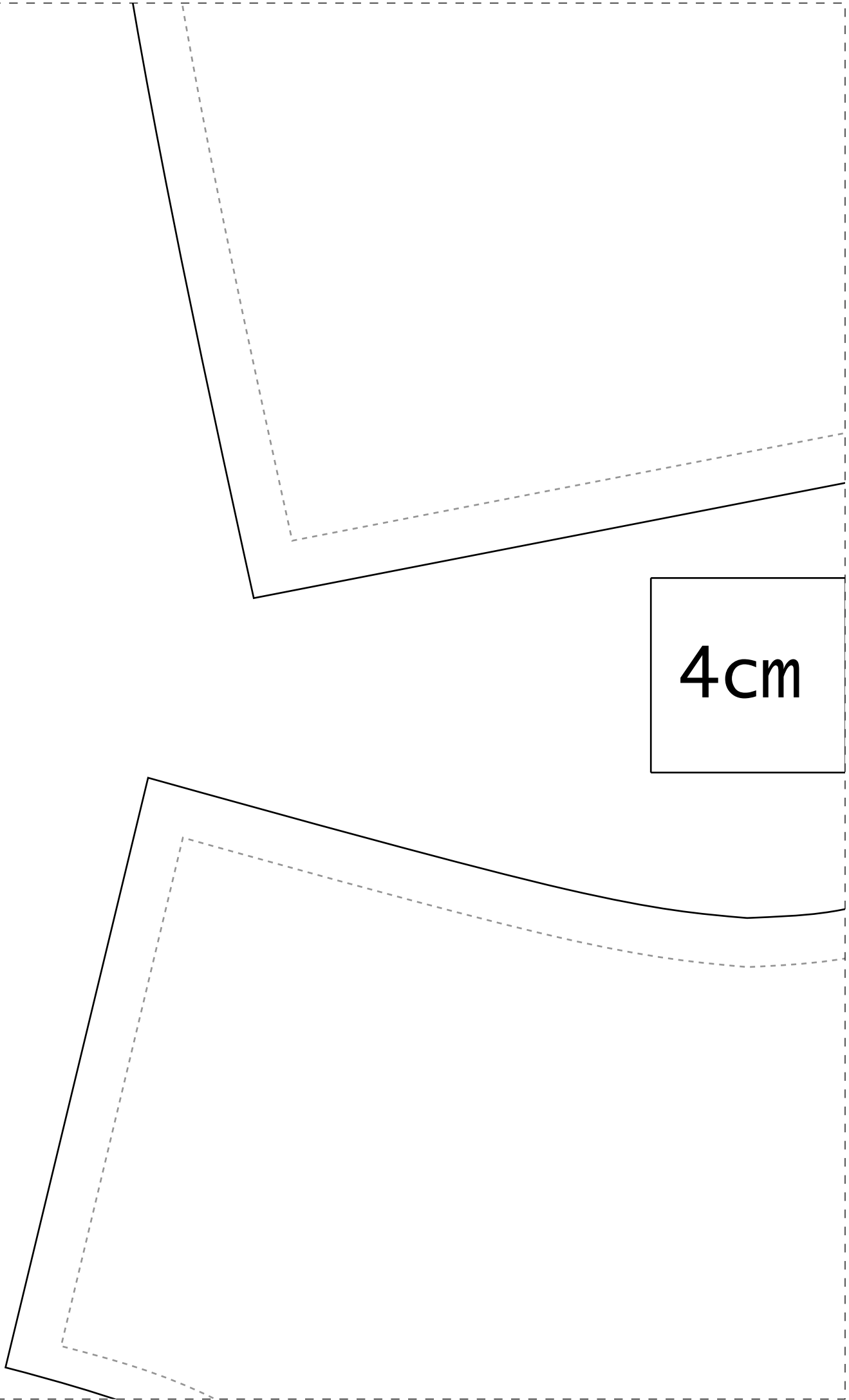


1-1

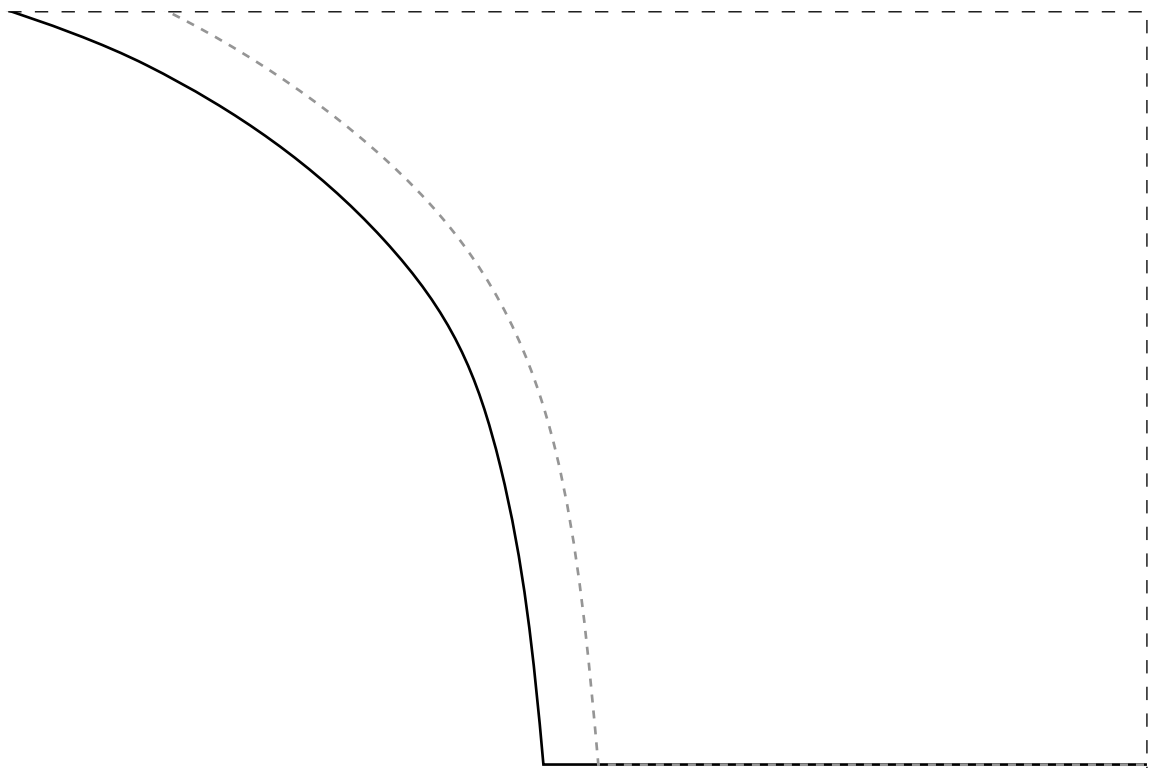


2-1



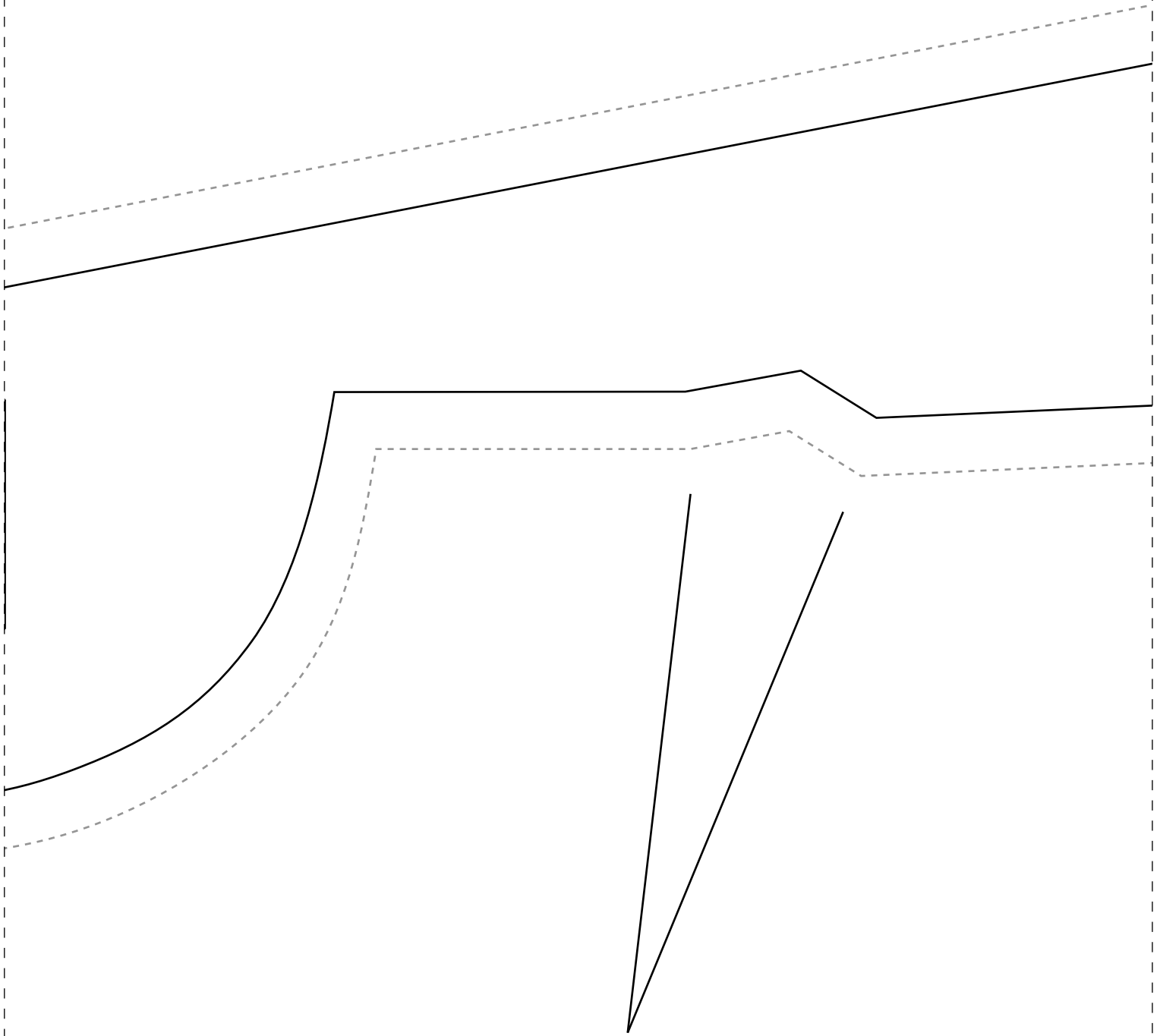
4cm

3-1



---

IDD21



Instituto Diana  
Semana CMC - Ag  
Vestido Dupla F

# Frente 1x-42

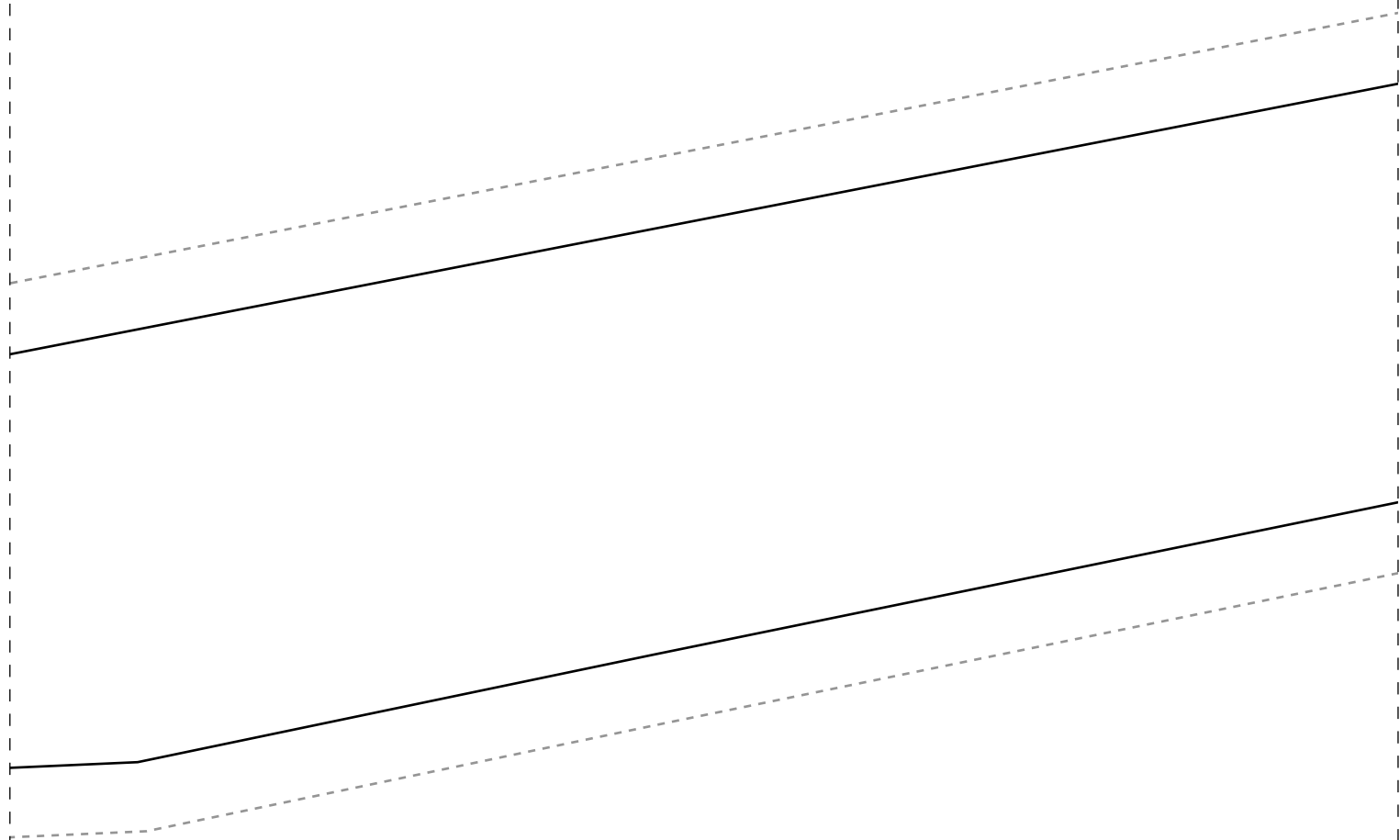
---

IDD21

1-3

ostas  $2x-42$

---



Demarchi  
ora é Sua Vez  
ace



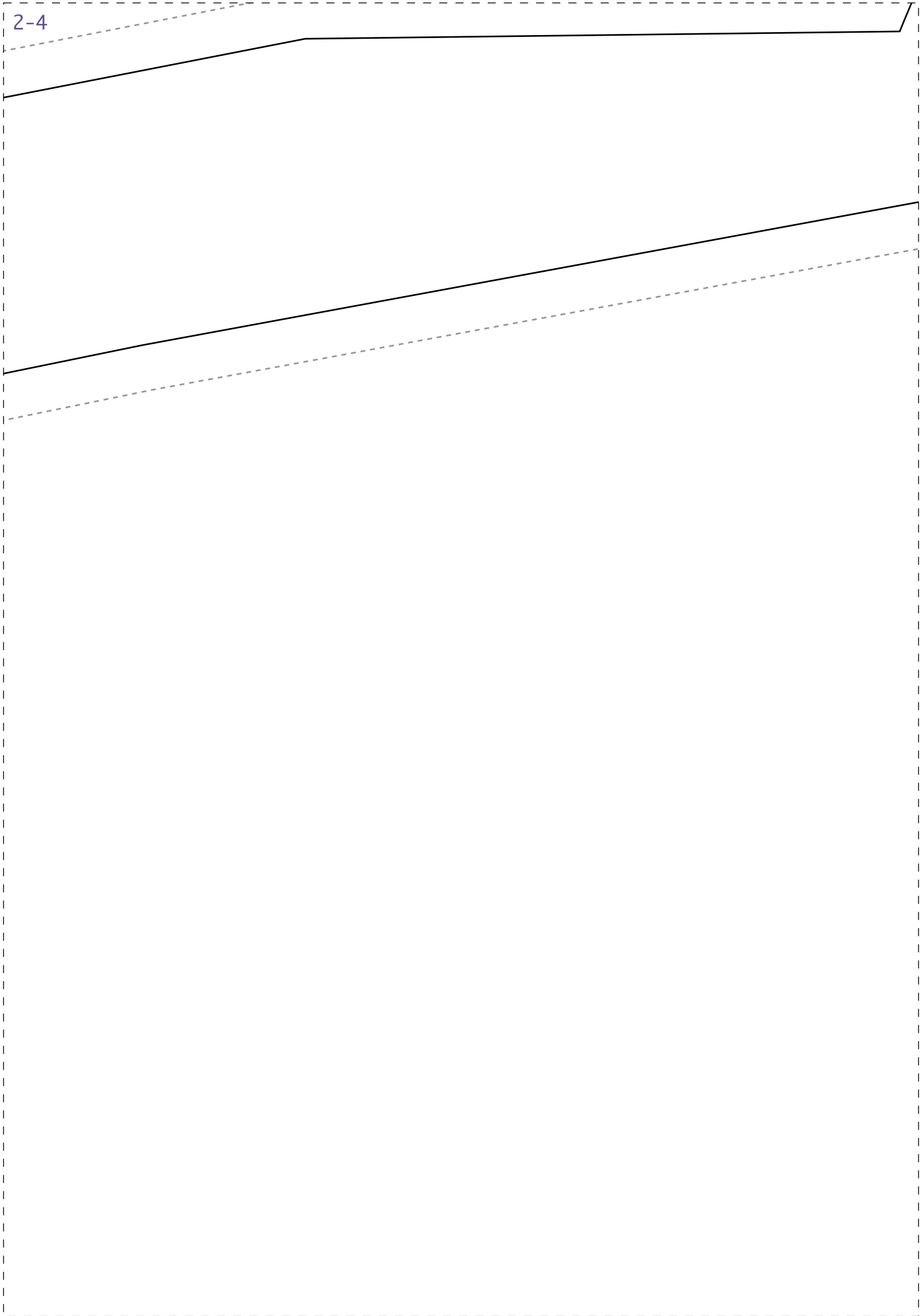


DOBRA

1-4



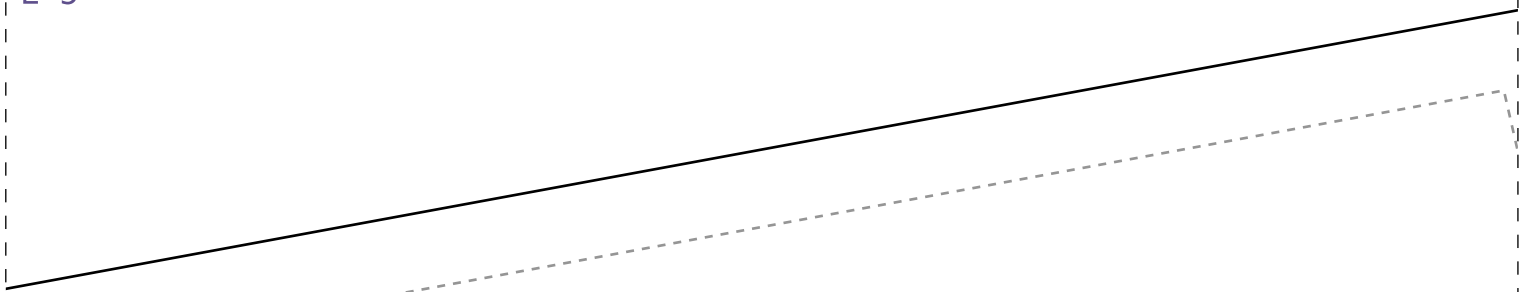
2-4





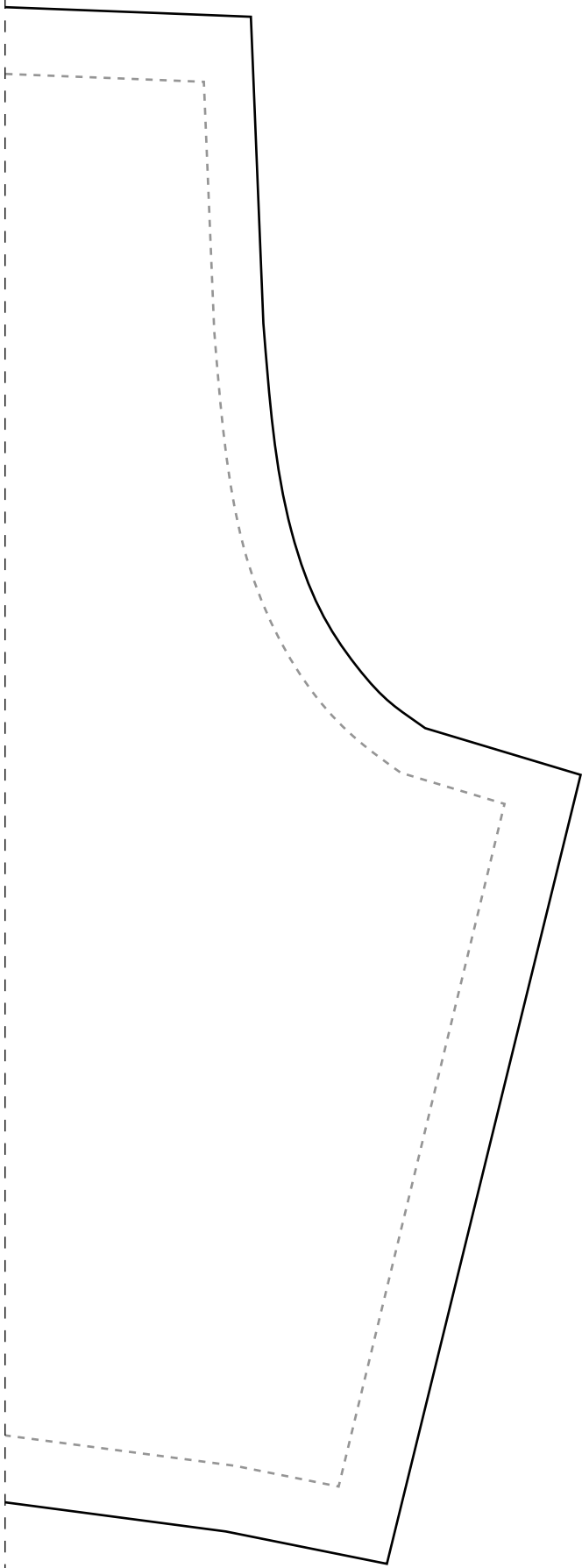
### Ficha Técnica:

- Tecido plano 1,4m de largura
- Indicado Tecidos mais estruturados de inverno como crepe alfaiataria, OU viscose, tricoline, viscolinho, chambray
- Busto com pence de ajuste
- Quantidade de tecido para cada face/lado do vestido:
  - =>1,2m para os tamanhos 36-40
  - =>1,3m para os tamanhos 42-46
  - =>1,7m para os tamanhos 48-50
  - =>2m para os tamanhos 52-54



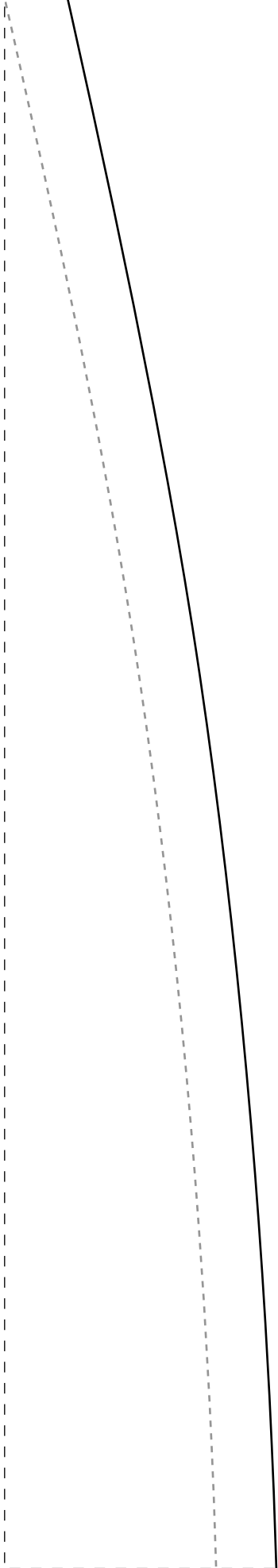


1-6





2-6



3-6