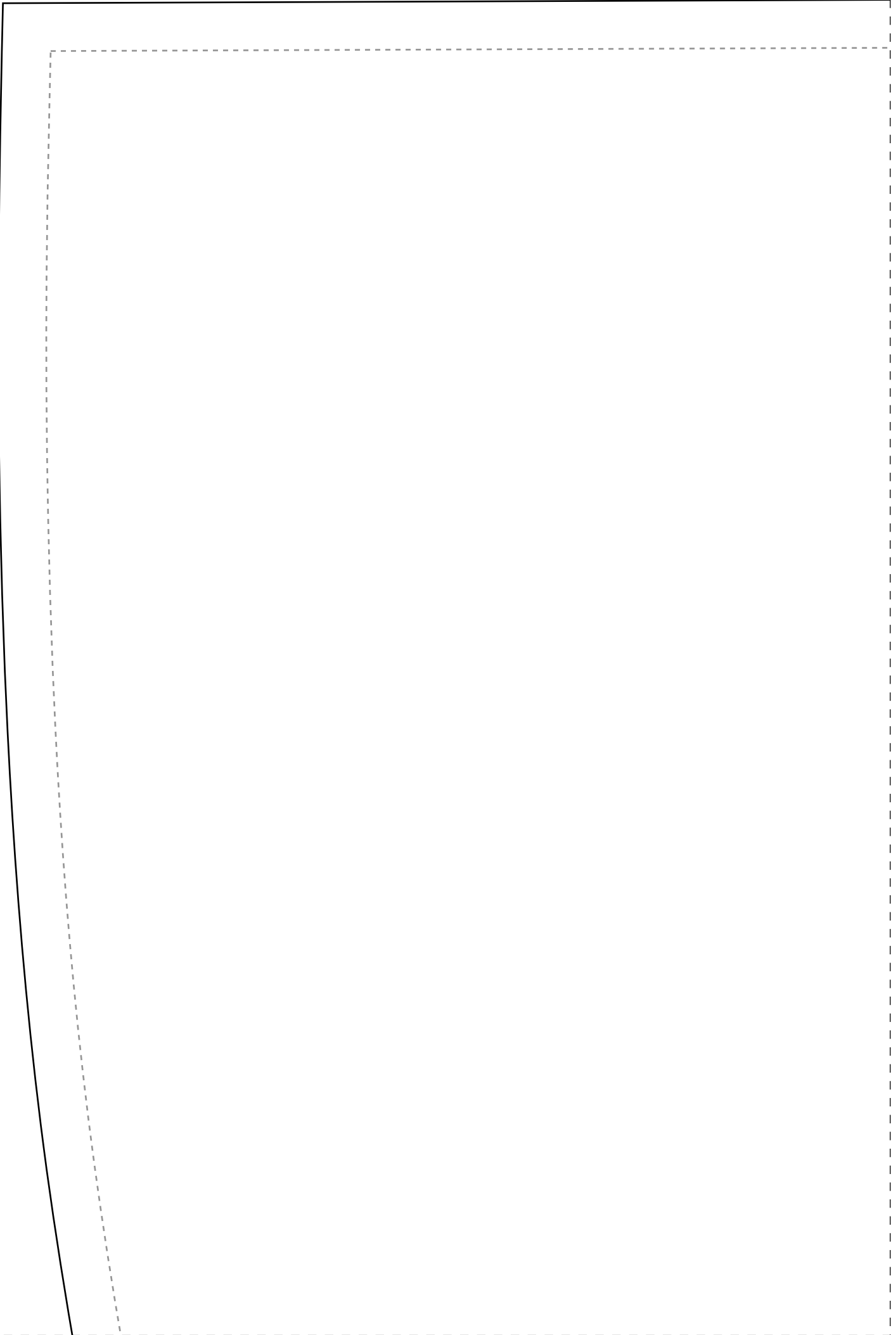
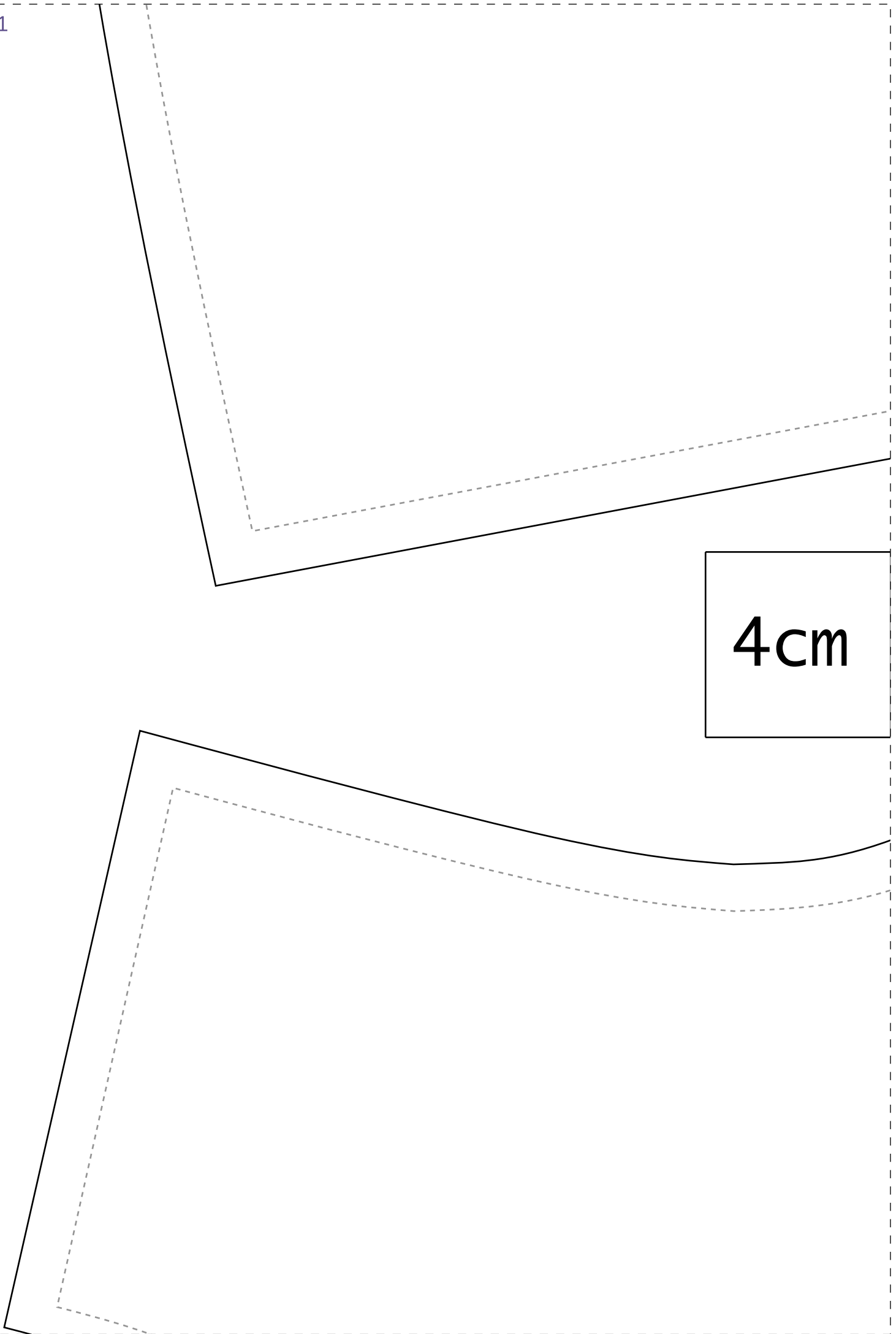


1-1

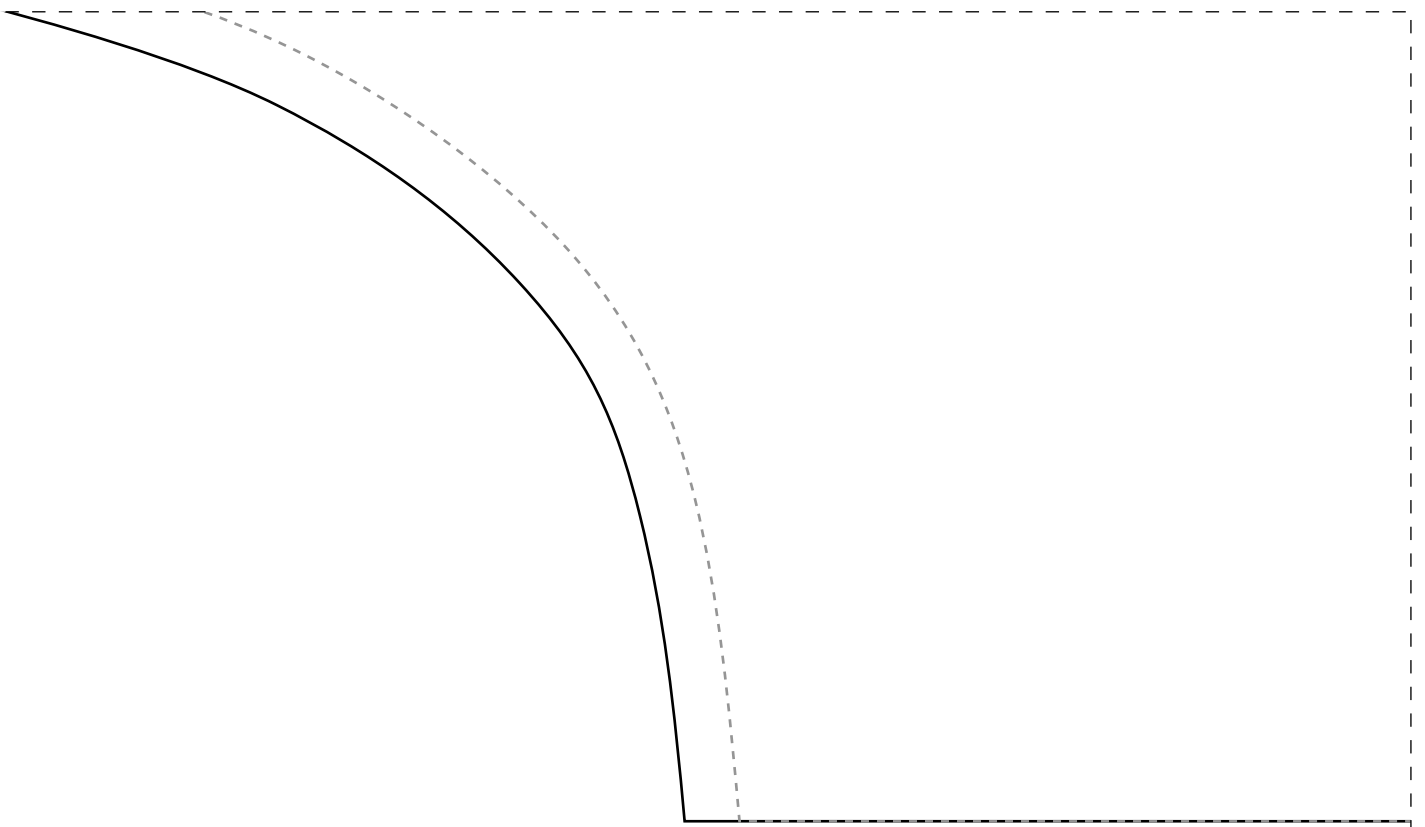


2-1

4cm



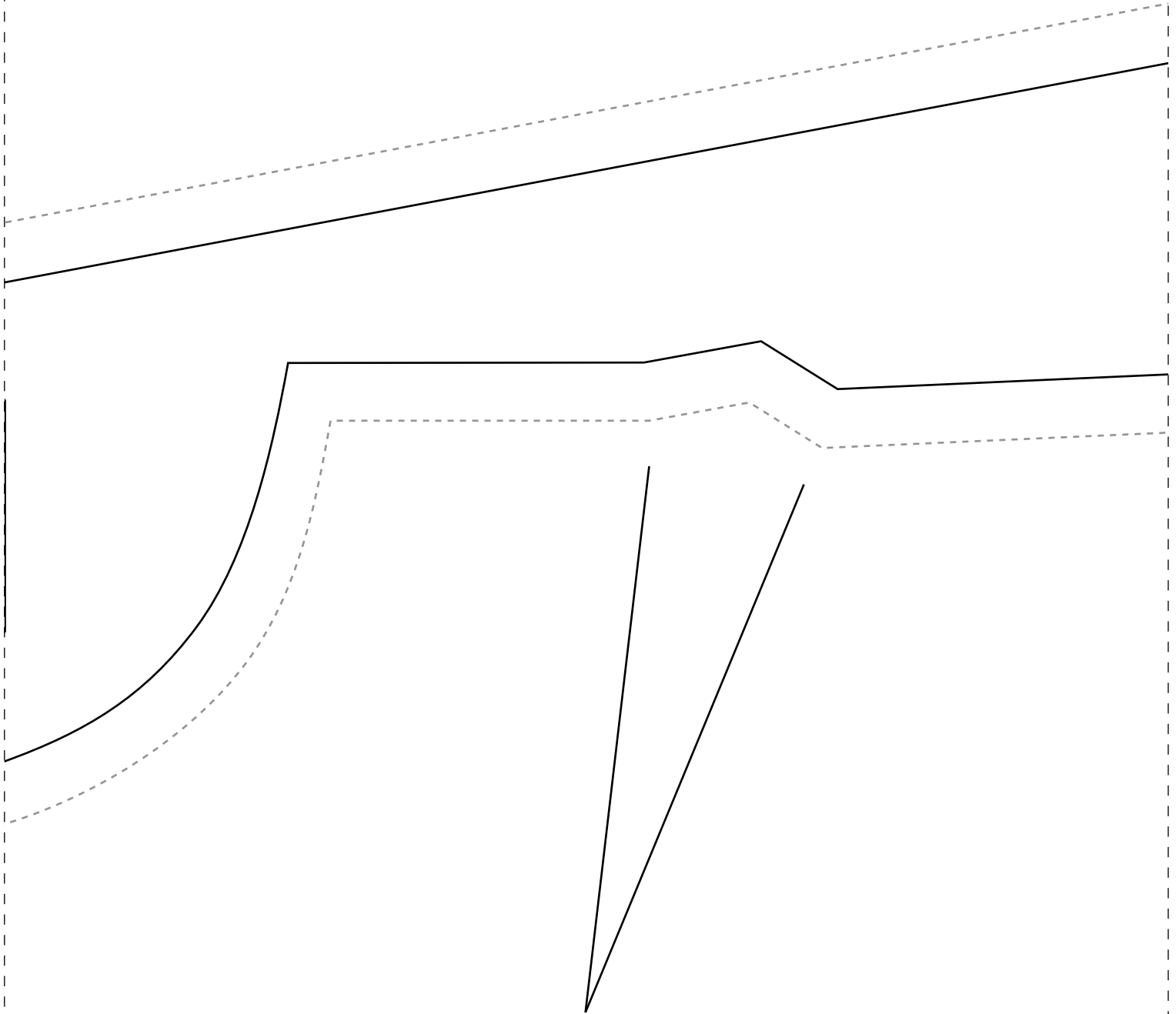
3-1



---

IDD21

Cost



Instituto Diana  
Semana CMC - Ago  
Municipal de...

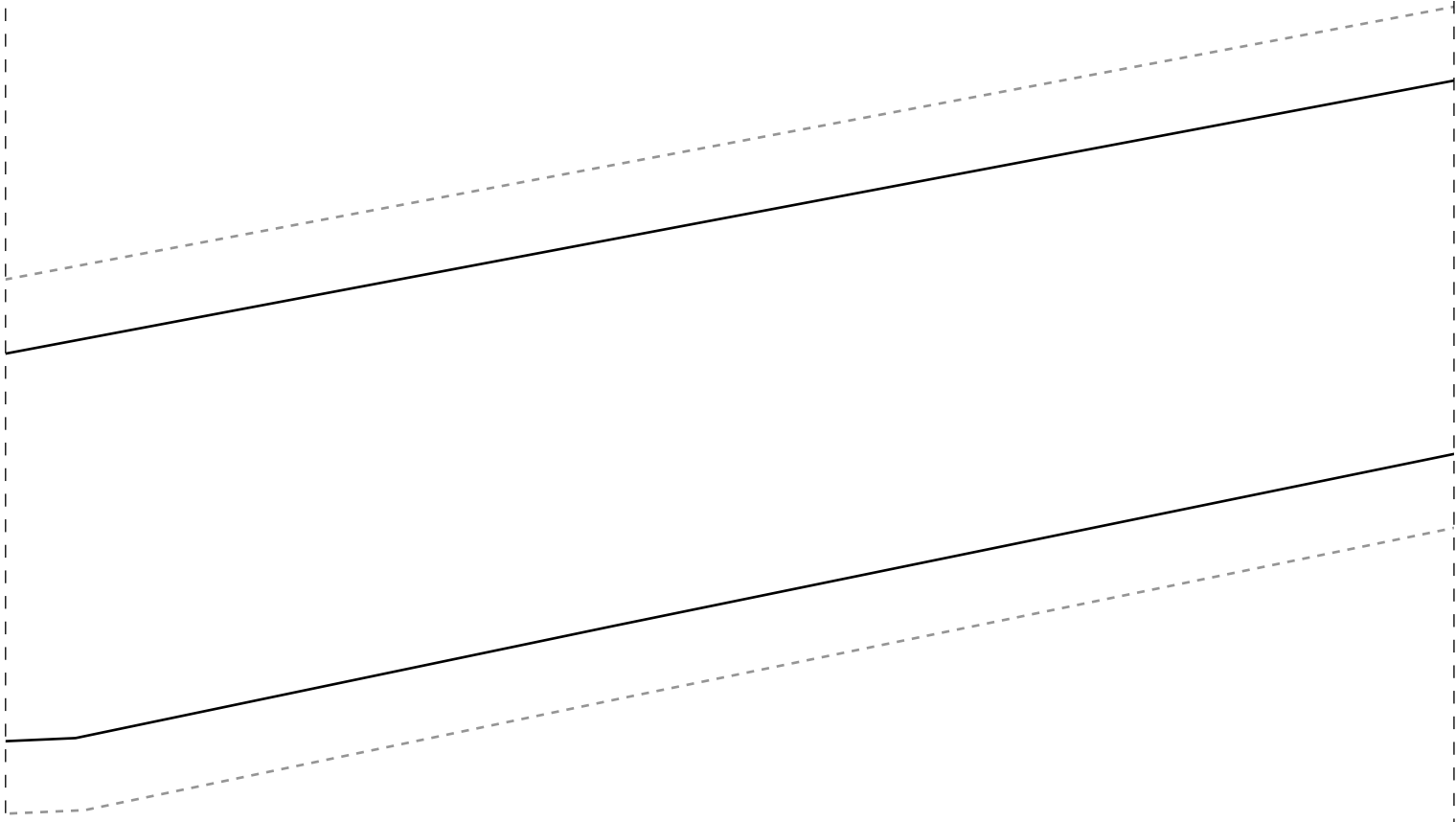
## Frente 1x-44

---

IDD21

1-3

as  $2x-44$



Demarchi  
ora é Sua Vez

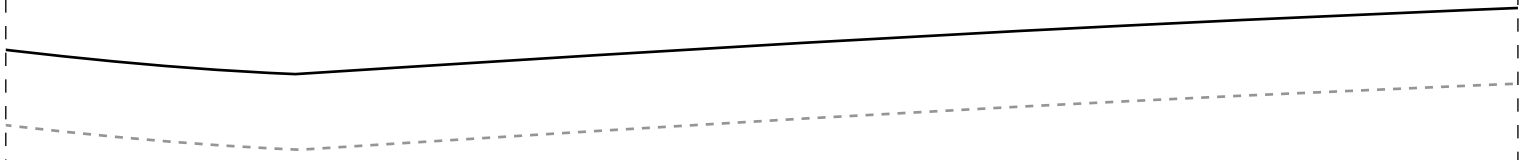


rice

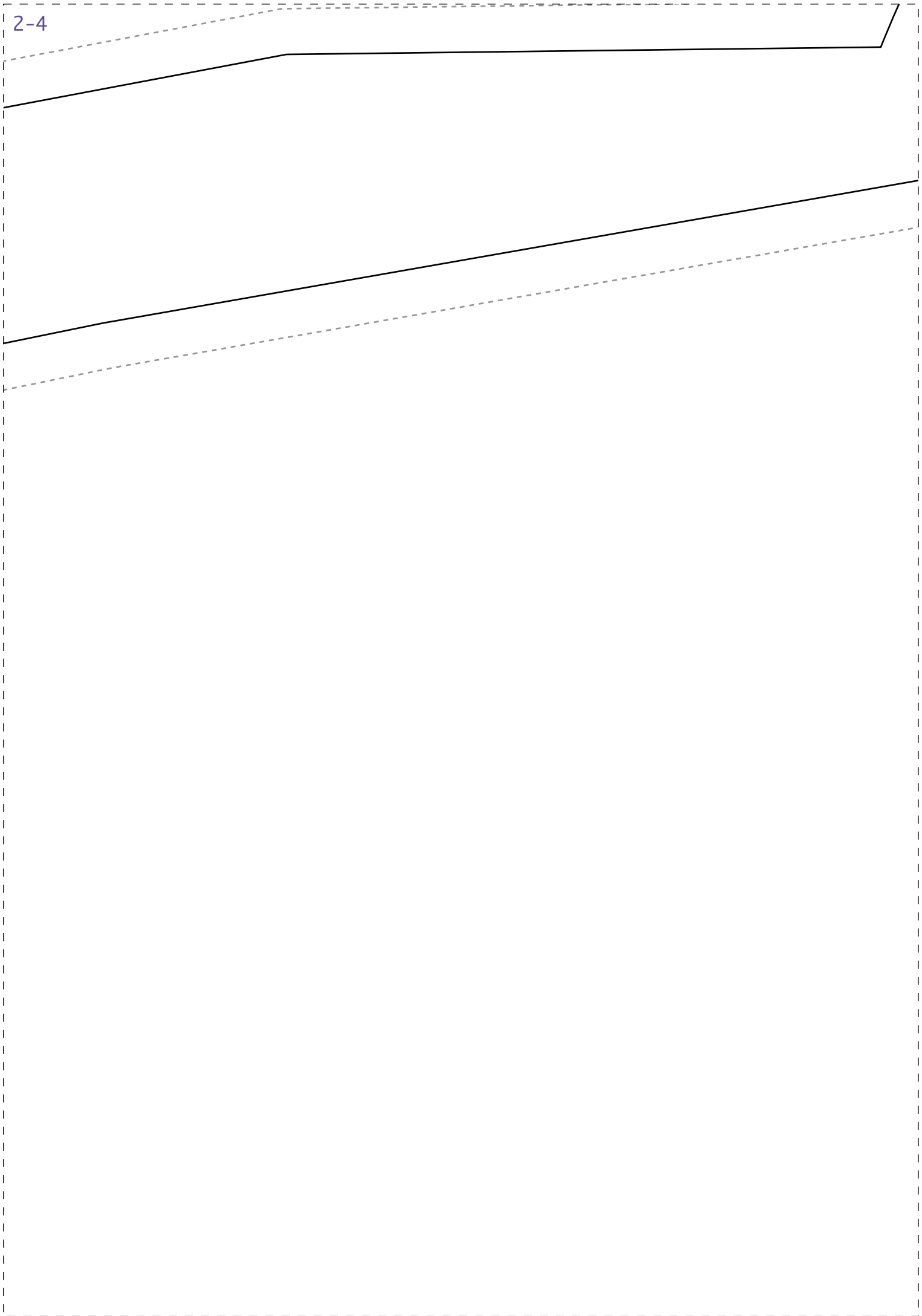


DOBRA

1-4



2-4

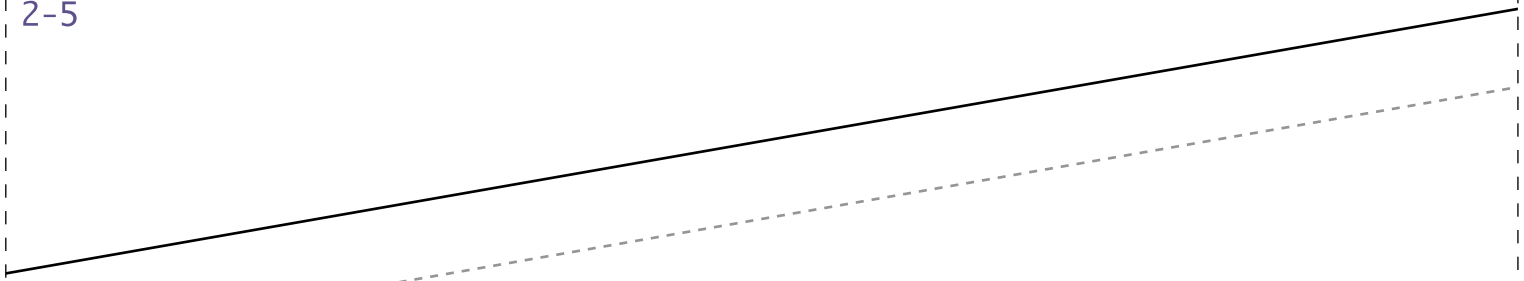




### Ficha Técnica:

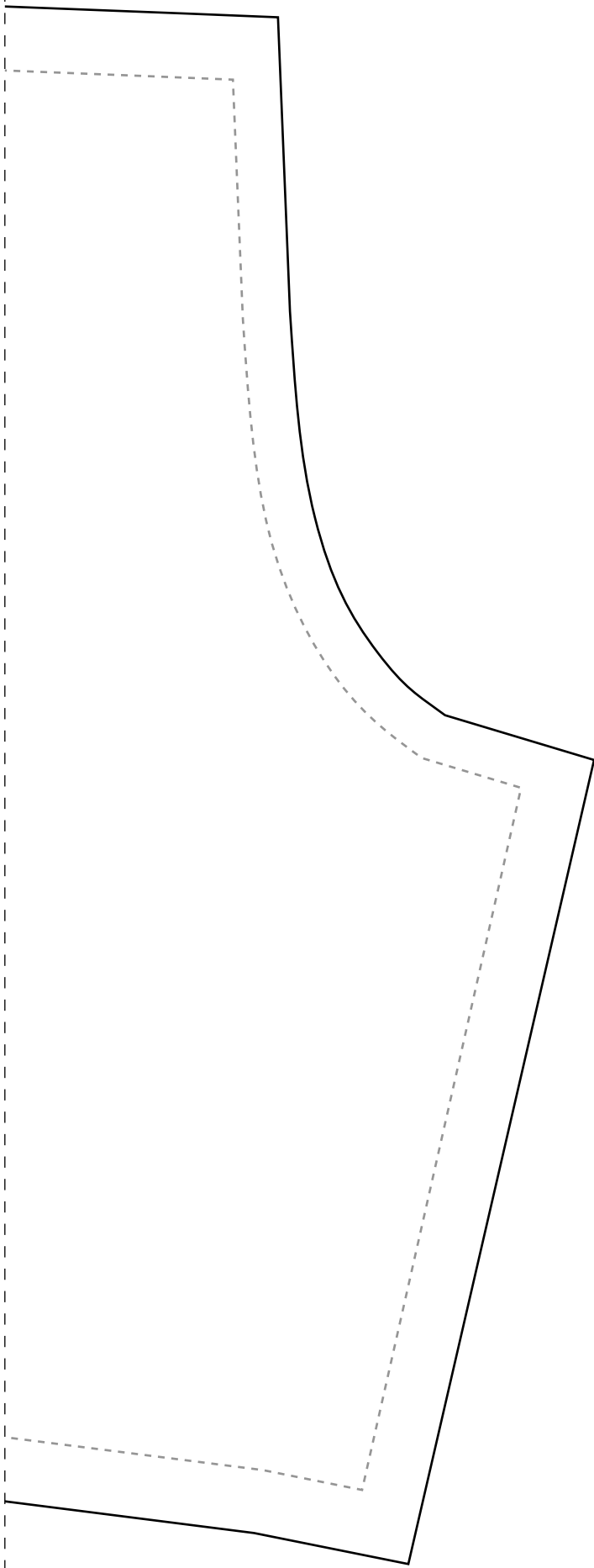
- Tecido plano 1,4m de largura
- Indicado Tecidos mais estruturados de inverno como crepe alfaiataria, OU viscose, tricoline, viscolinho, chambray
- Busto com pence de ajuste
- Quantidade de tecido para cada face/lado do vestido:
  - =>1,2m para os tamanhos 36-40
  - =>1,3m para os tamanhos 42-46
  - =>1,7m para os tamanhos 48-50
  - =>2m para os tamanhos 52-54

2-5





1-6





2-6

