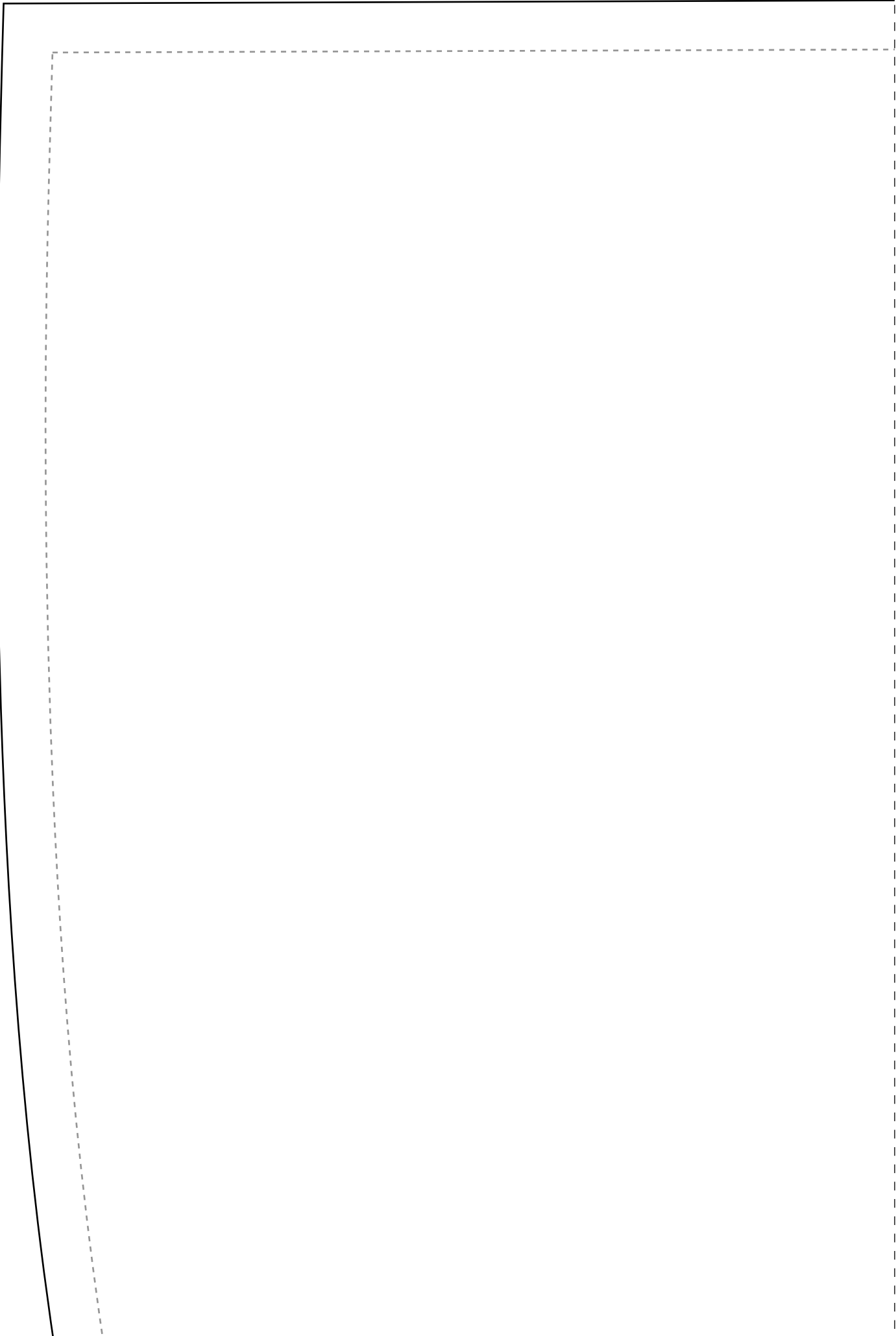
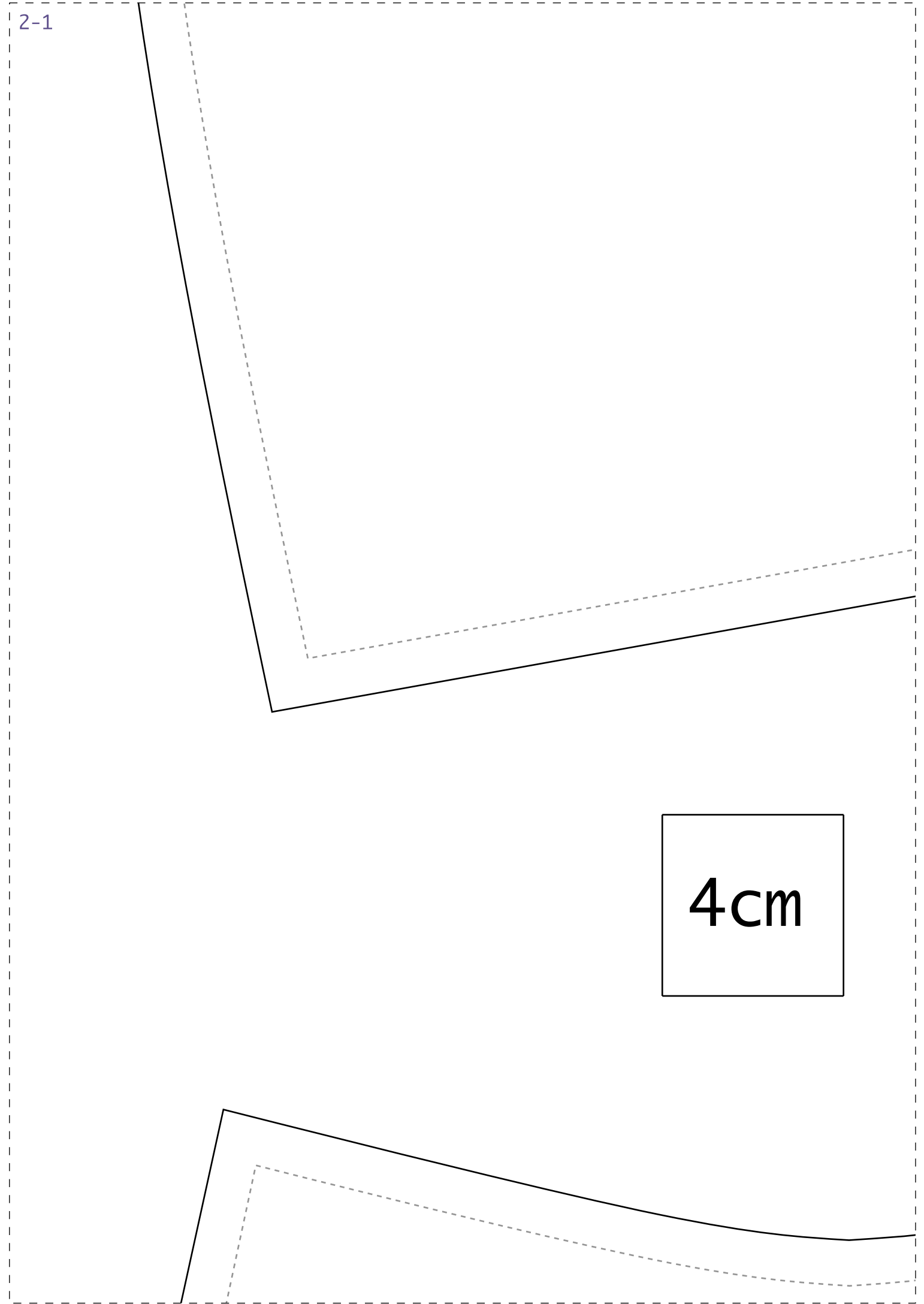


1-1

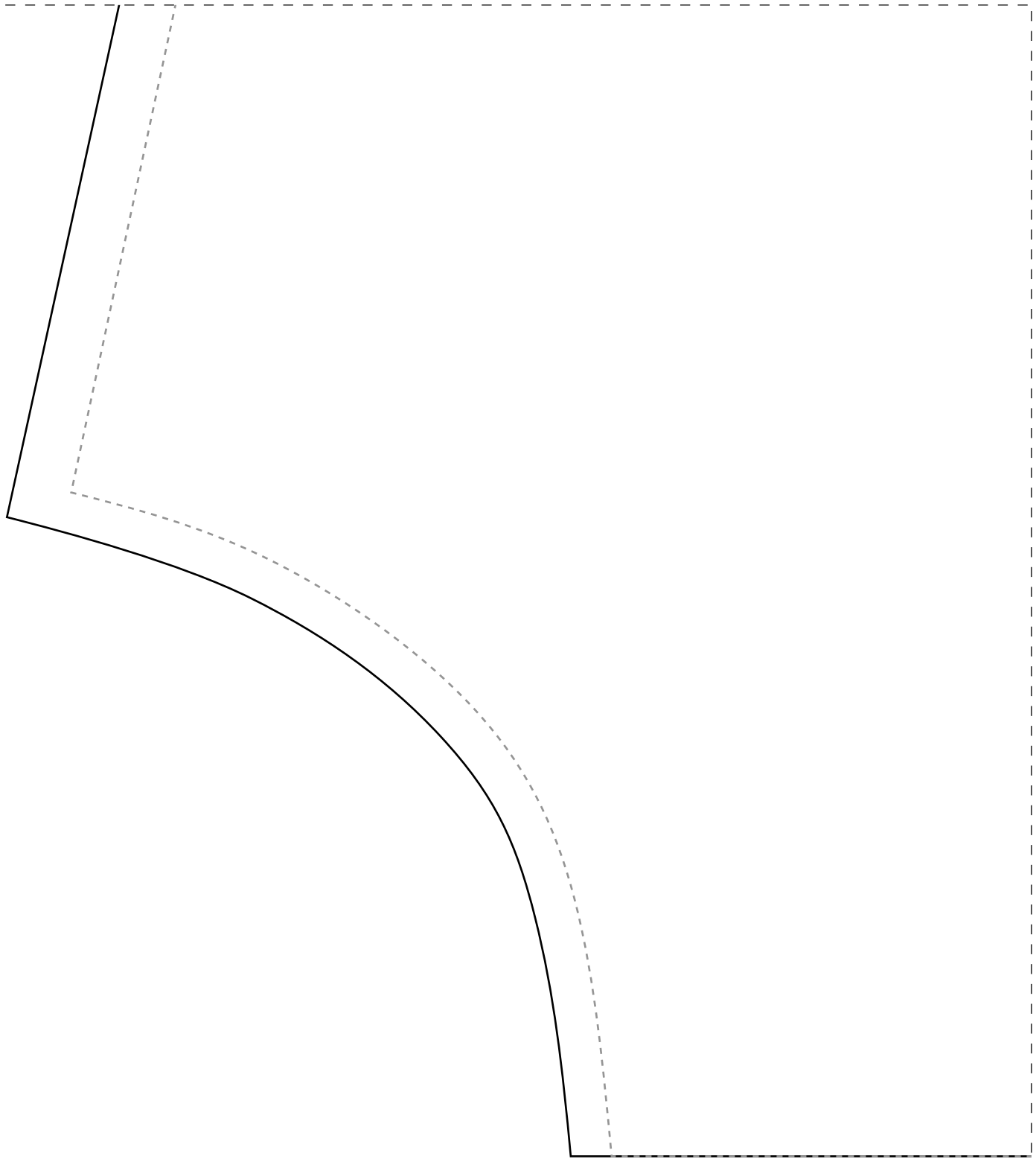


2-1

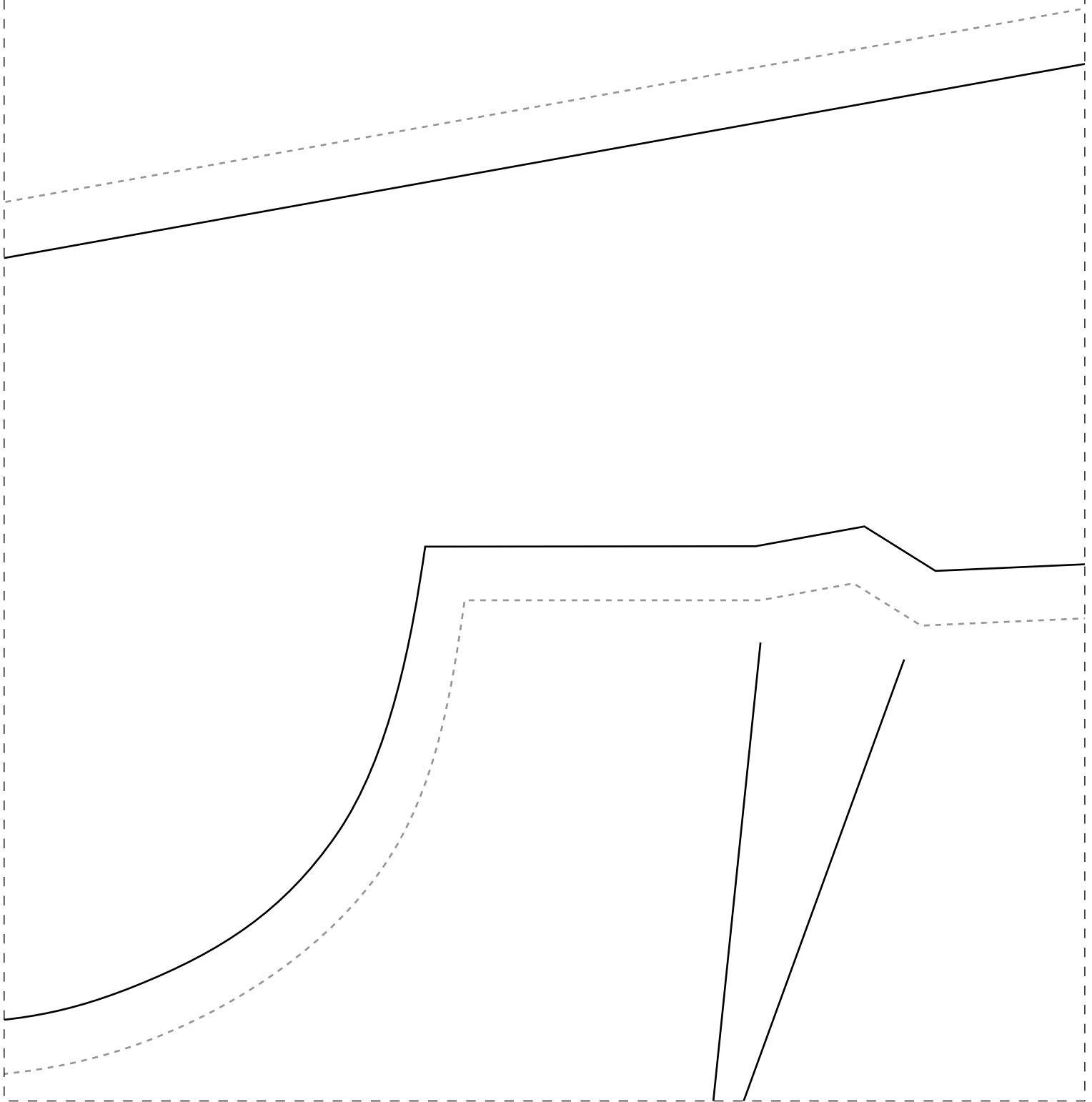


4cm

3-1



IDD21



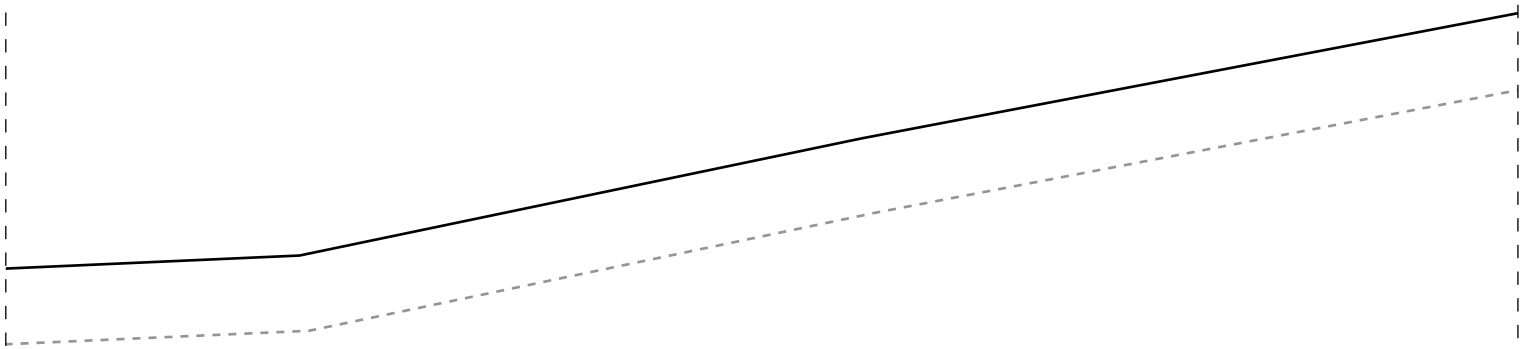
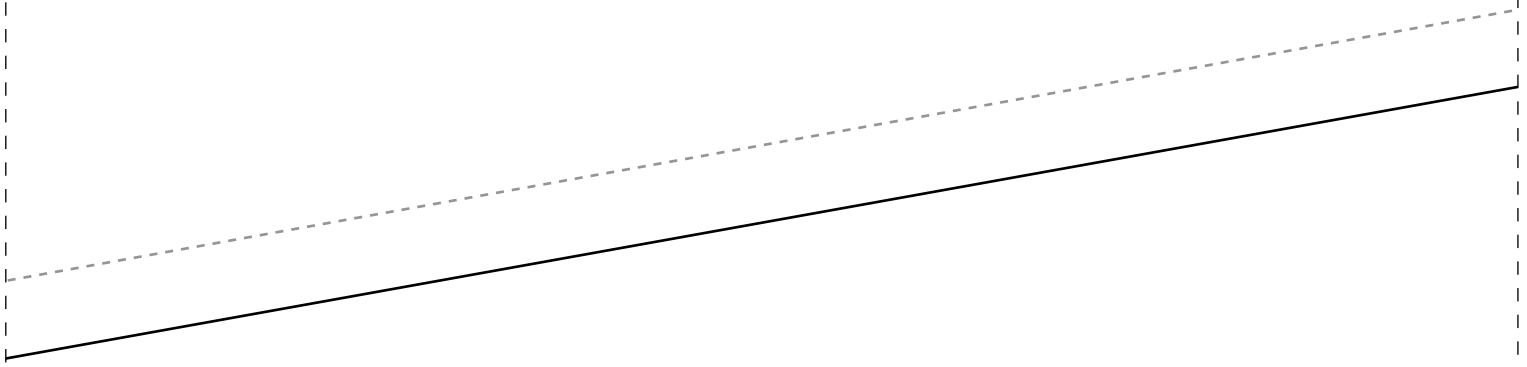


Instituto Di Semana CMC - Vestido Dupl

Frente 1x-4

IDD21

Costas 2x-48



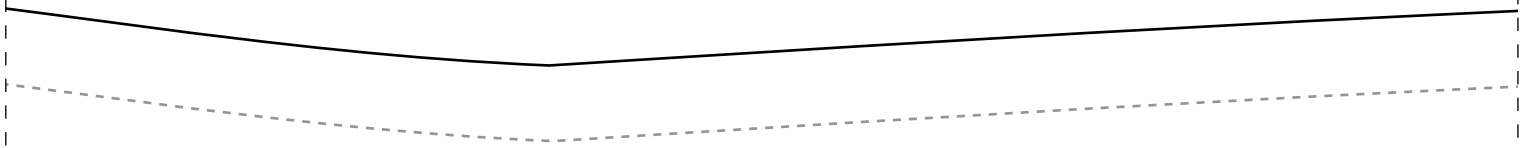
ana Demarchi Agora é Sua Vez a Face

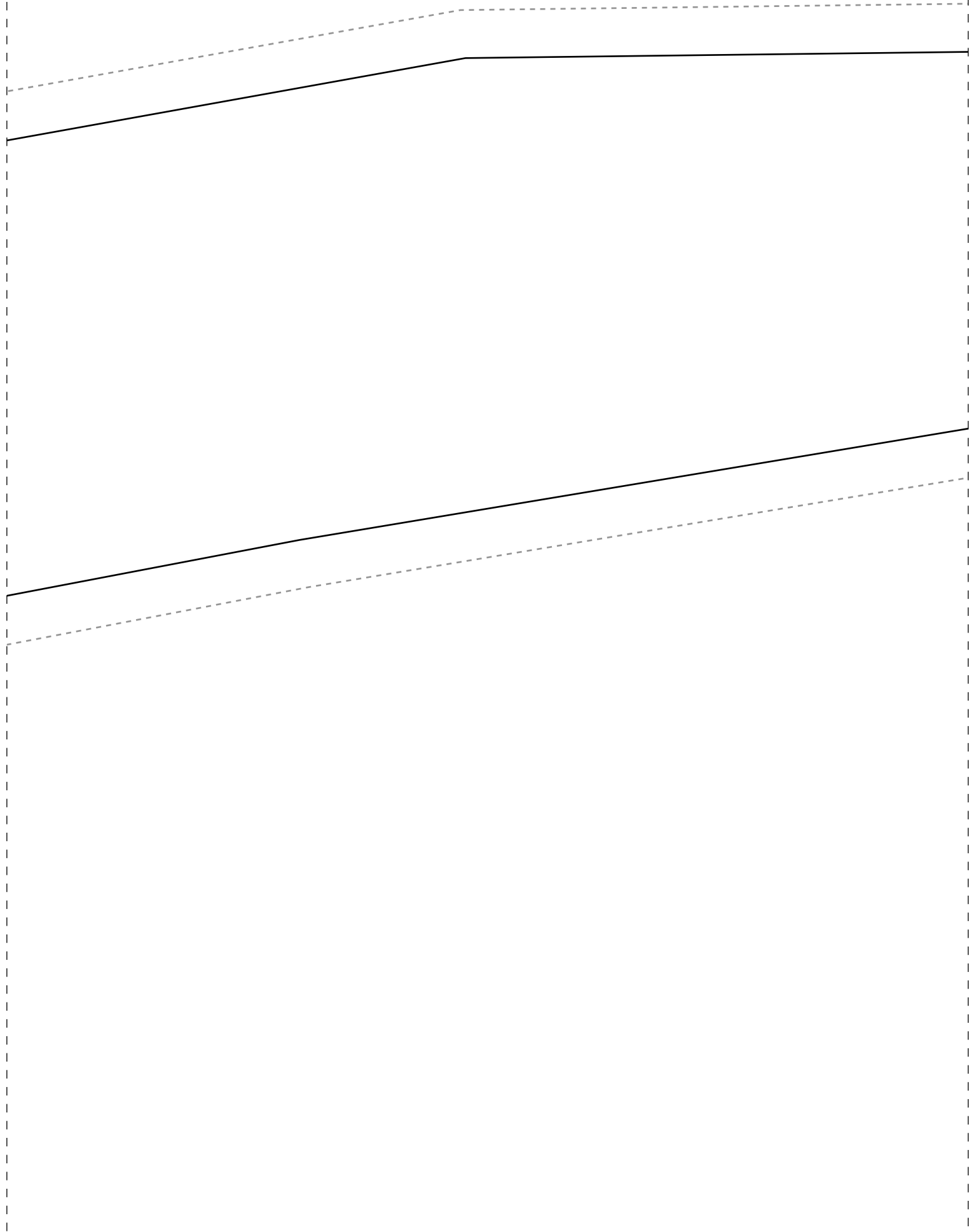
48



DOBRA

1-4

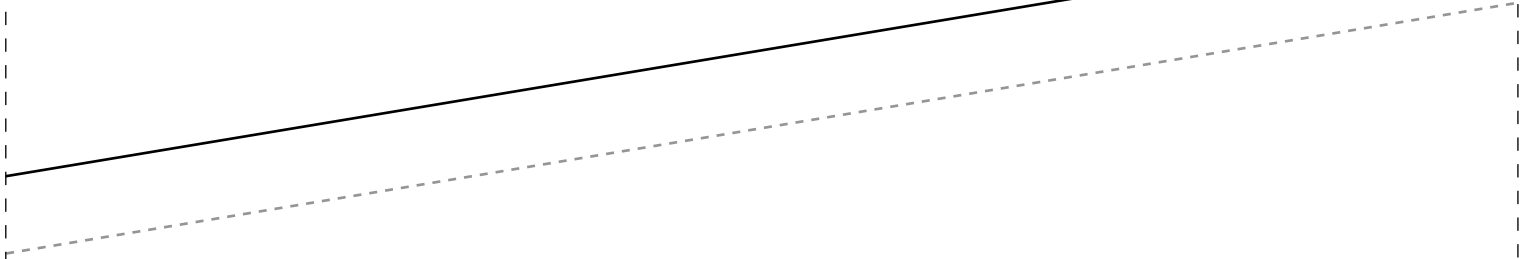
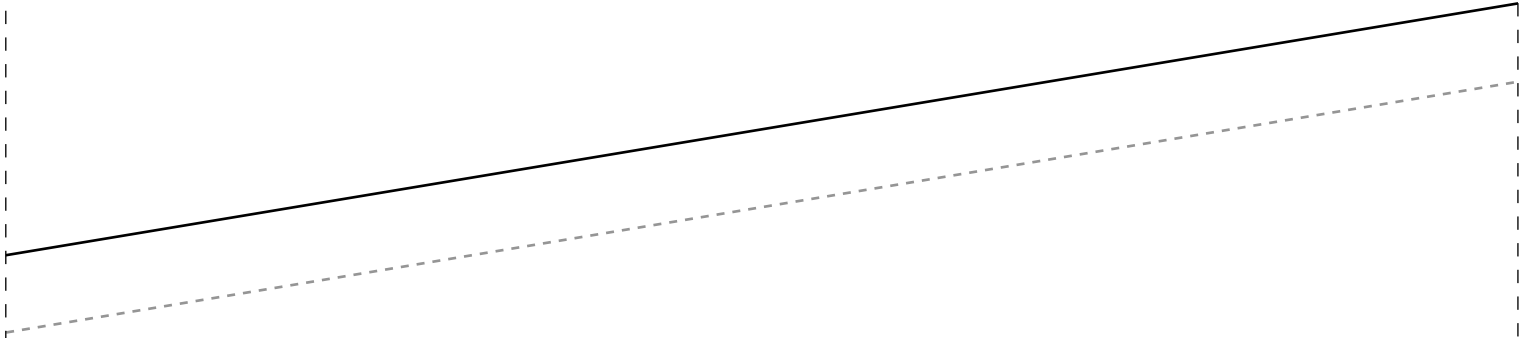
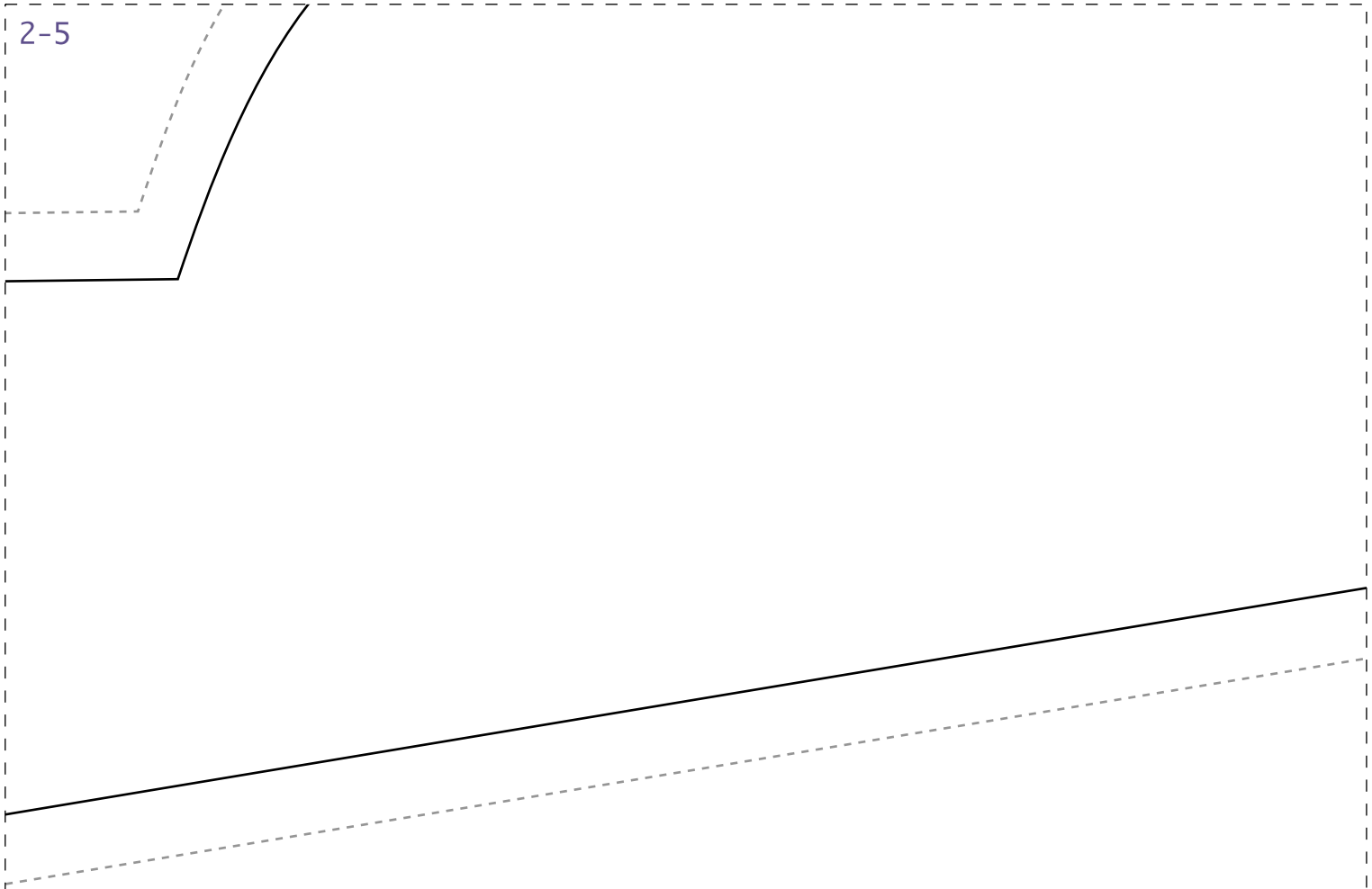
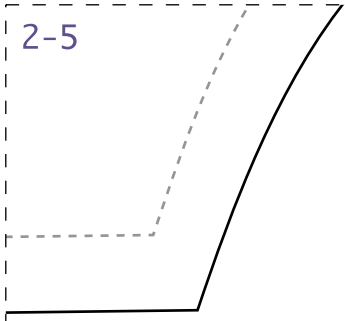




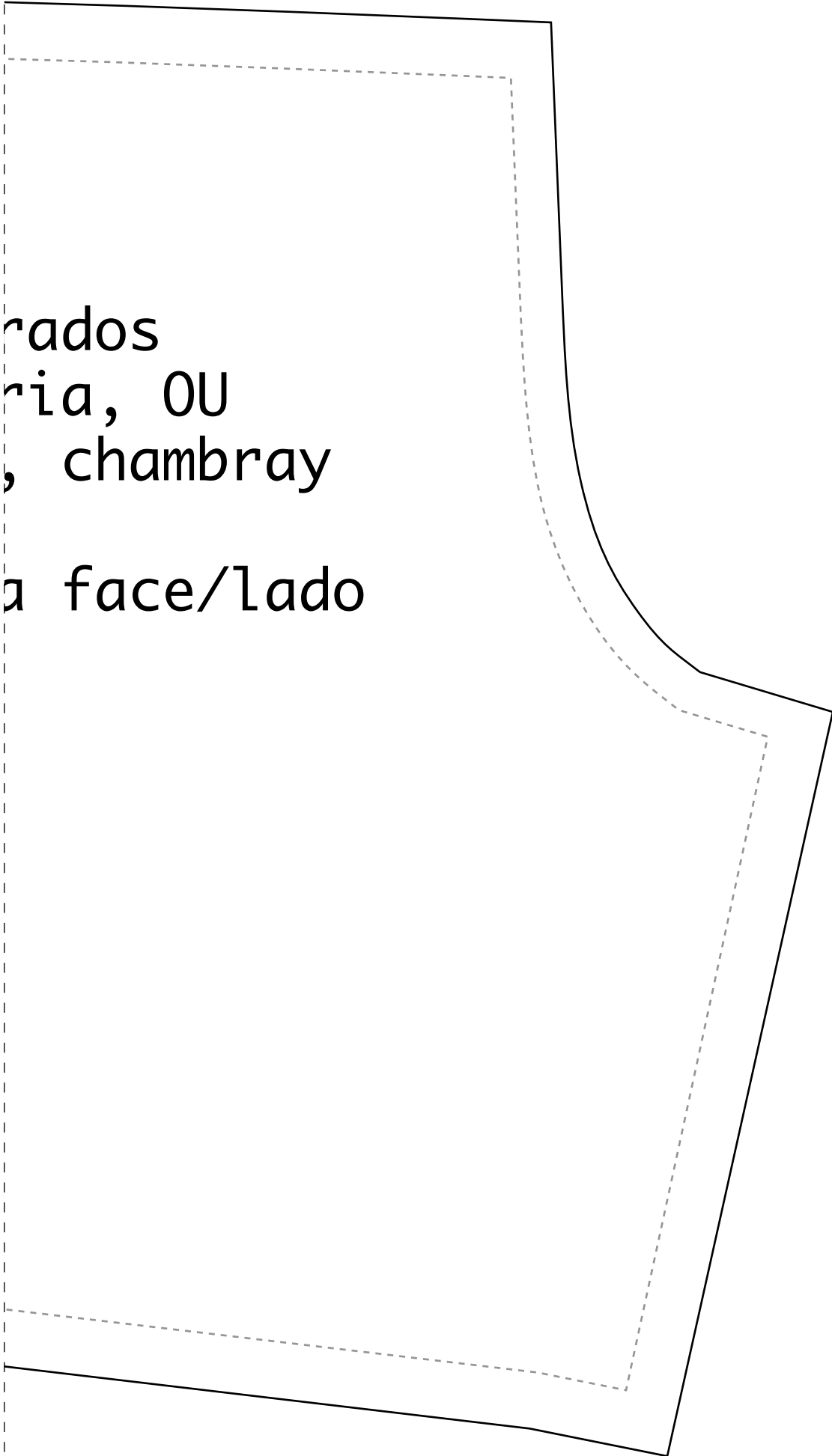
Ficha Técnica:

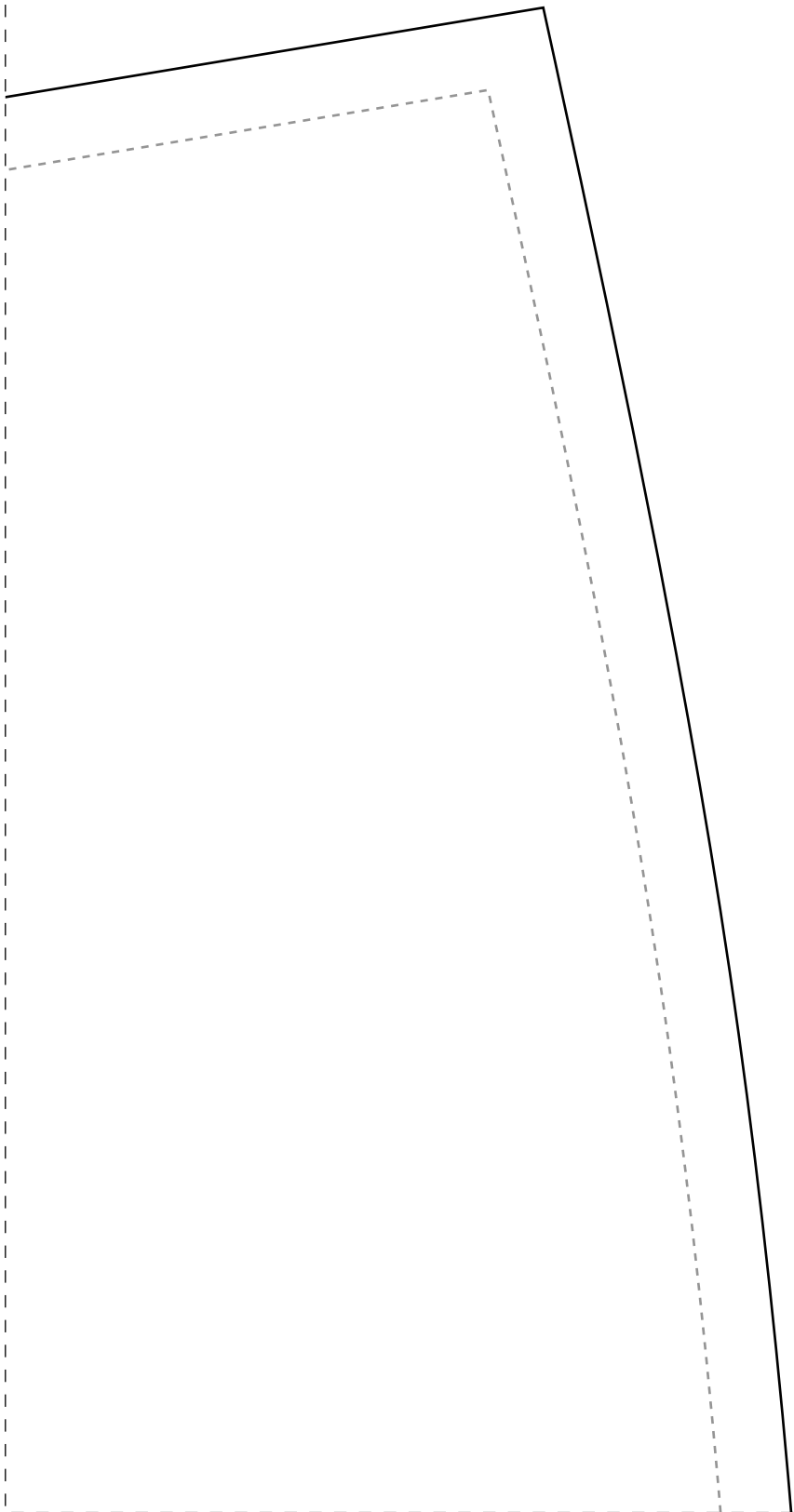
- Tecido plano 1,4m de largura
- Indicado Tecidos mais estruturados de inverno como crepe alfaiata, viscose, tricoline, viscolinho
- Busto com pence de ajuste
- Quantidade de tecido para cada do vestido:
 - =>1,2m para os tamanhos 36-40
 - =>1,3m para os tamanhos 42-46
 - =>1,7m para os tamanhos 48-50
 - =>2m para os tamanhos 52-54

2-5



rados
ria, OU
, chambray
a face/lado





3-6

