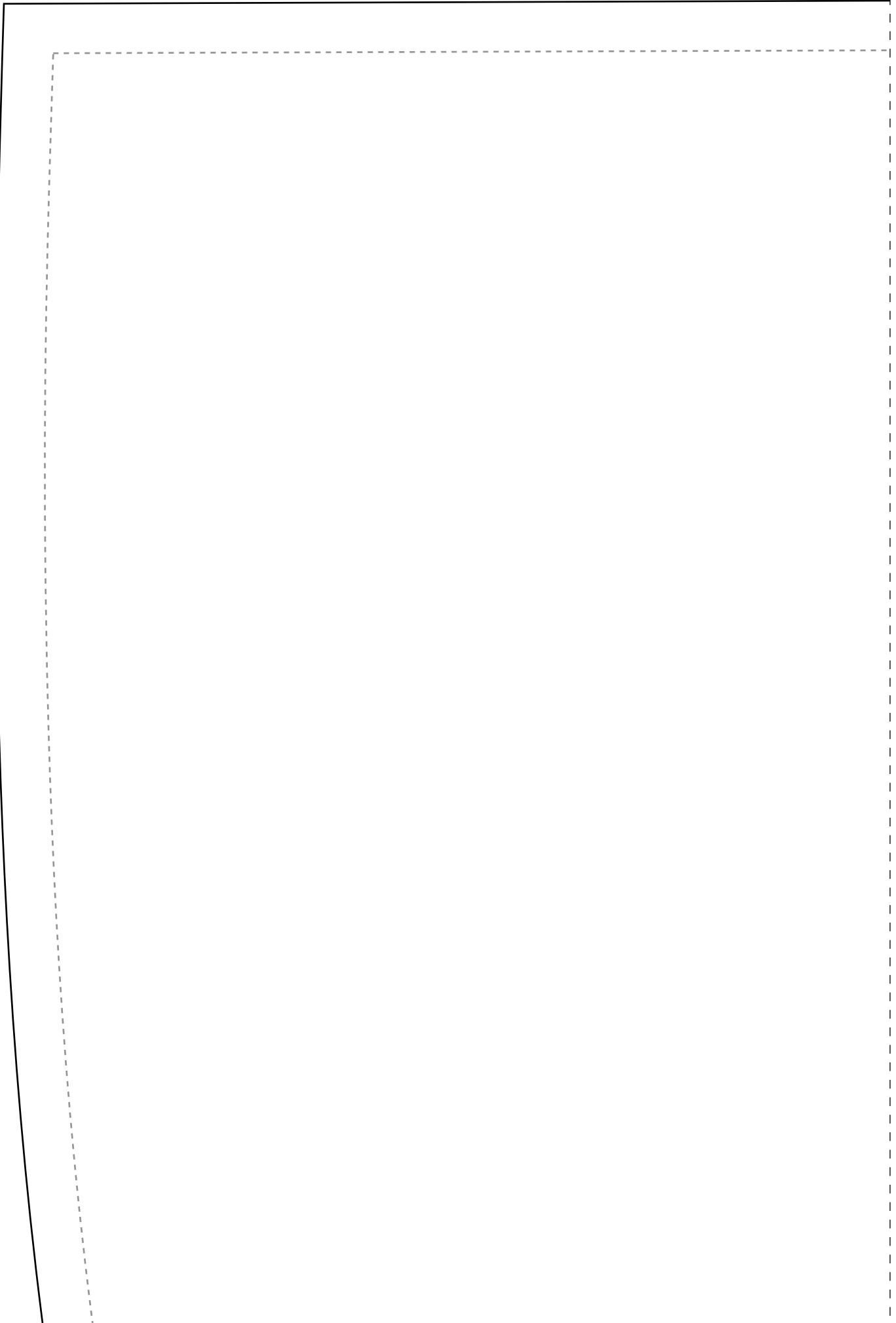
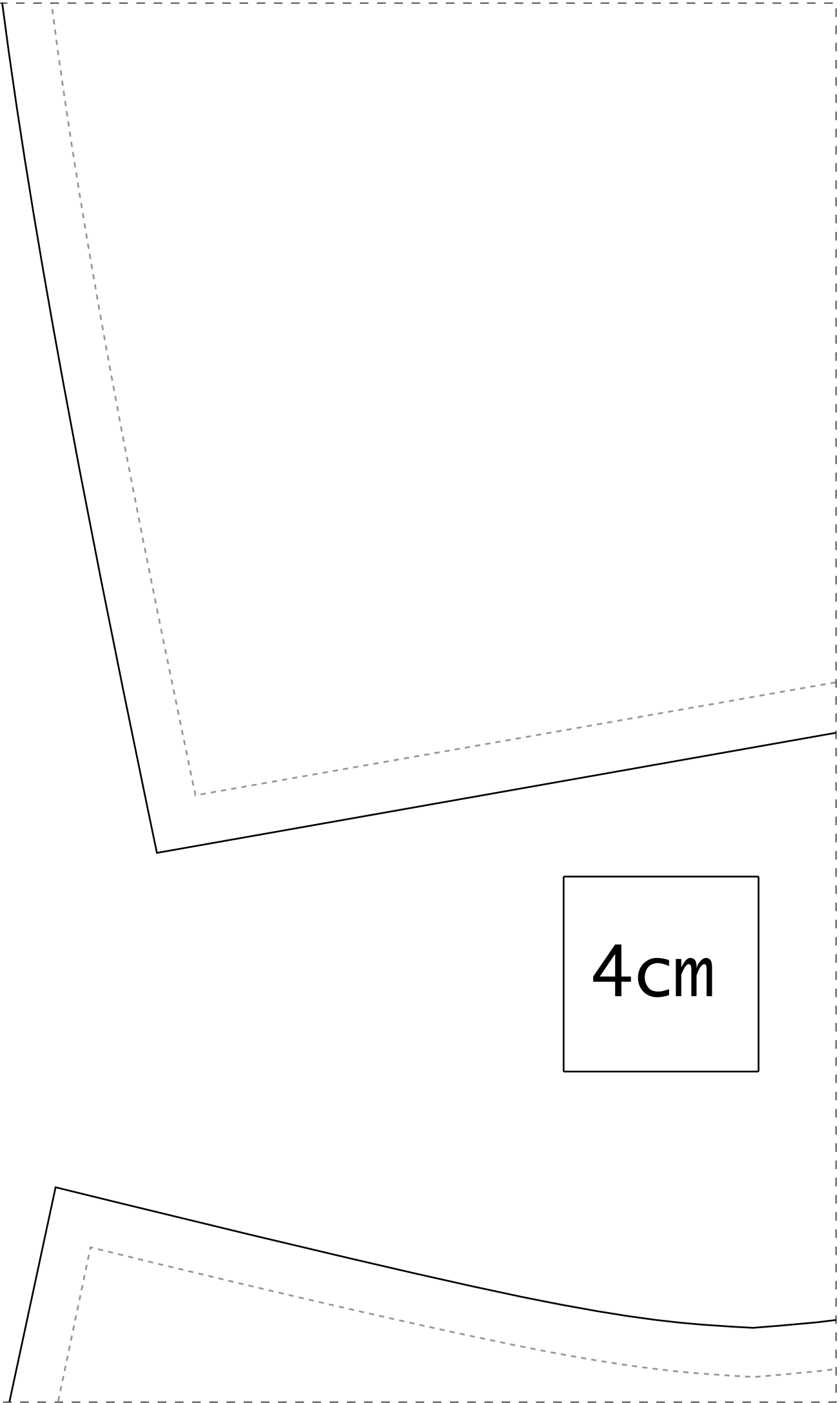


1-1

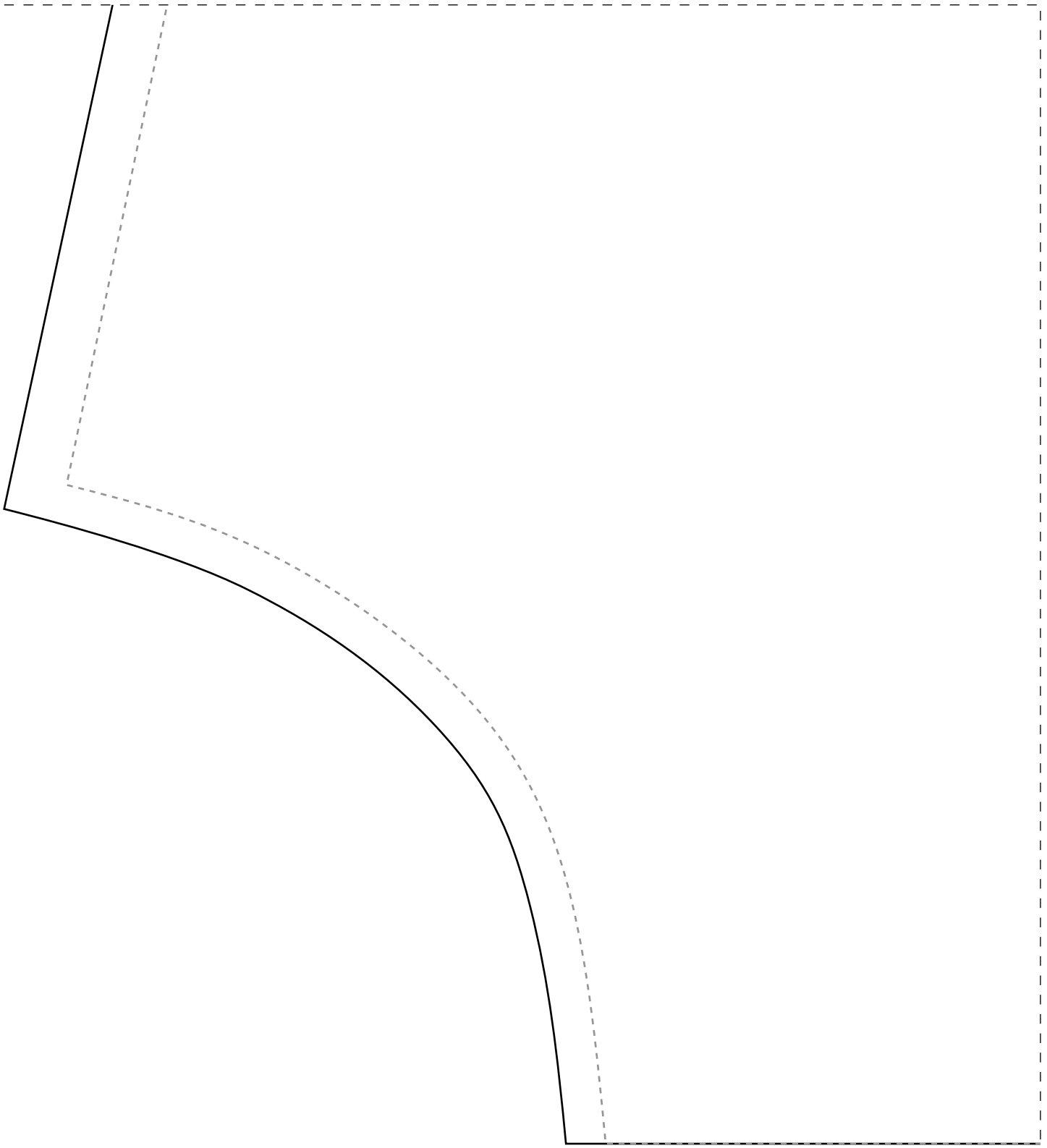


2-1

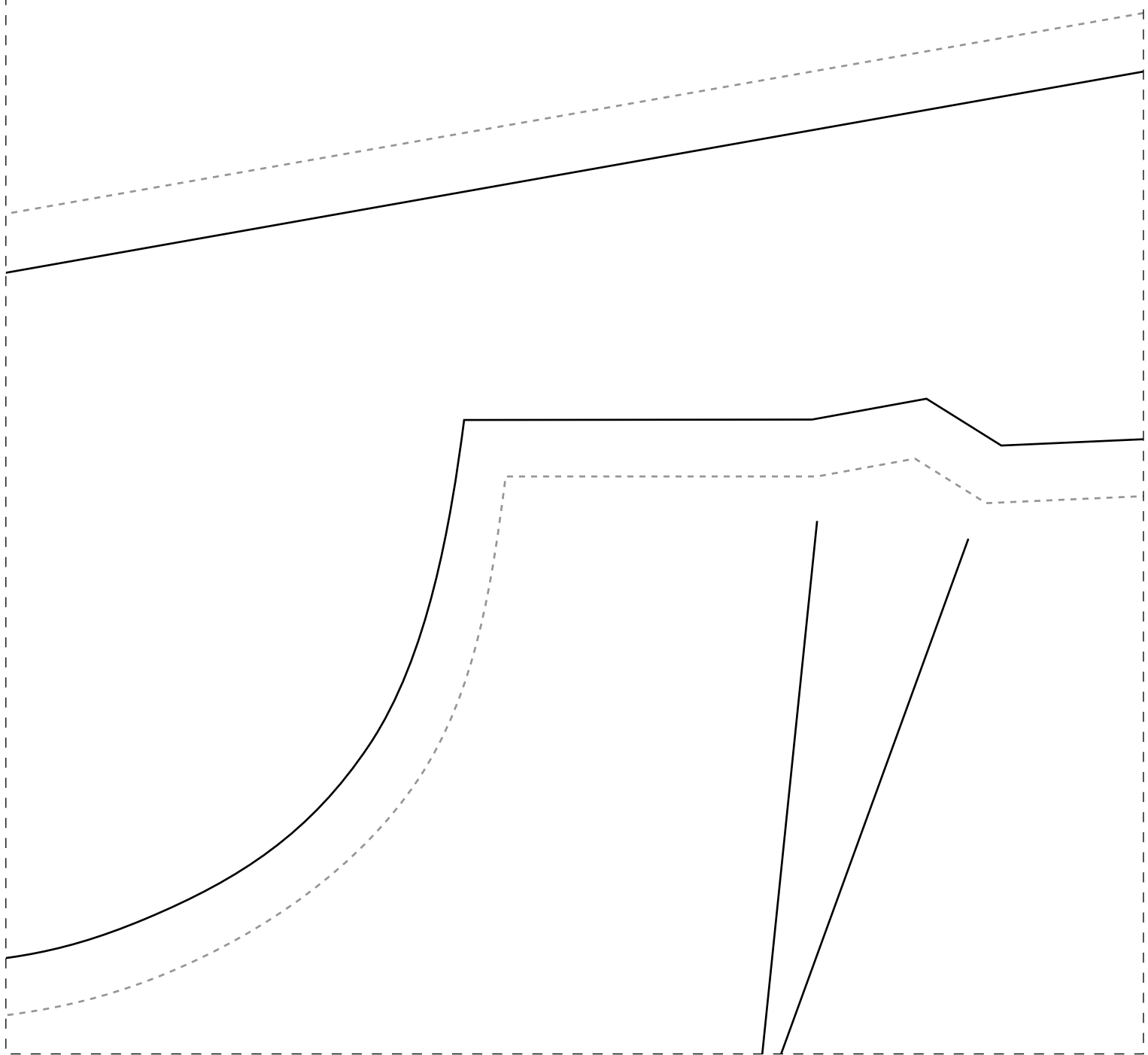


4cm

3-1



IDD21



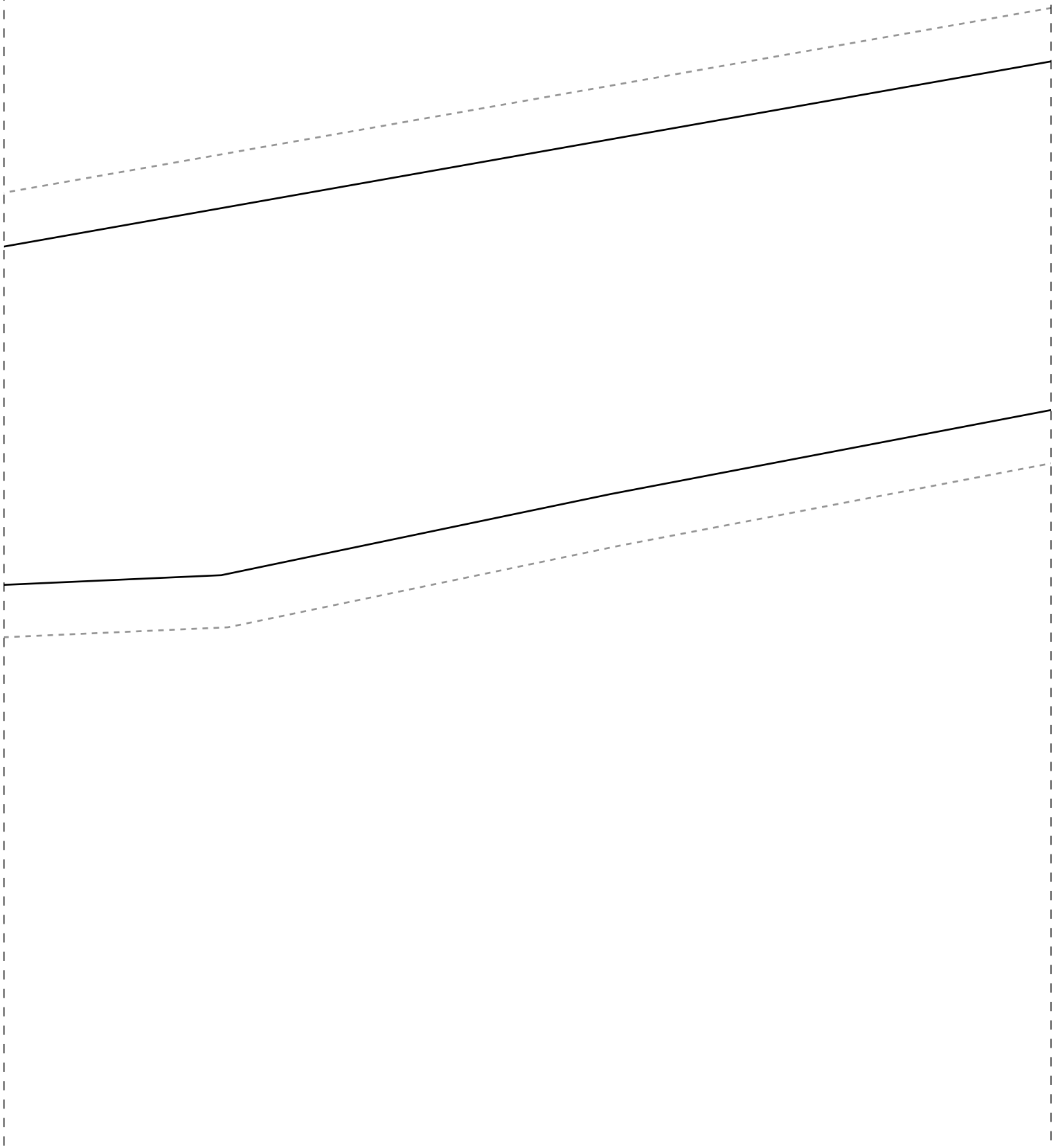


Instituto Dia Semana CMC - Vestido Dupla

Frente 1x-

IDD21

Costas $2x-50$



na Demarchi Agora é Sua Vez Face

50

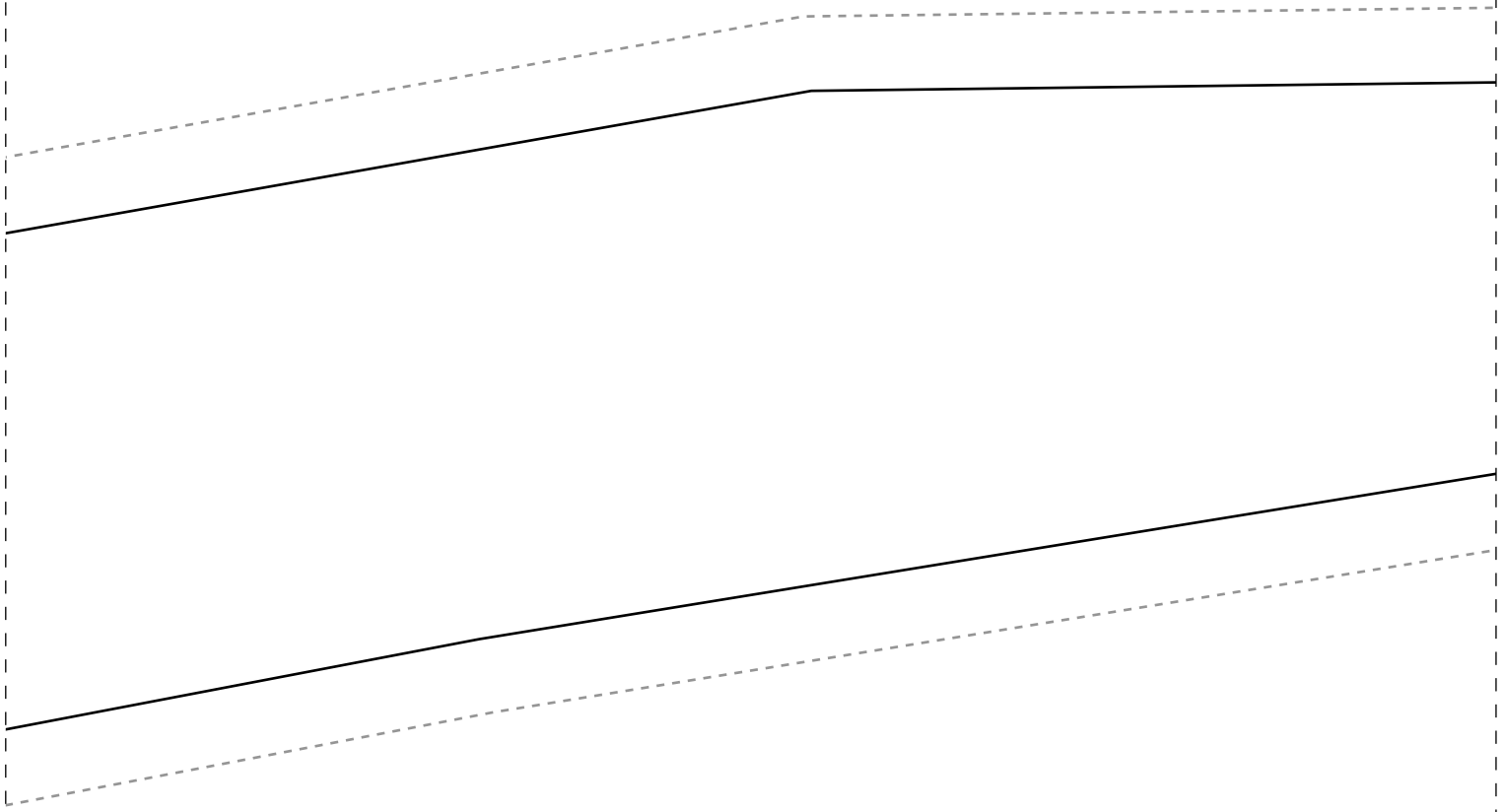


DOBRA

1-4



F
-
-
d
v
-
-
a
||
||
||
||



icha Técnica:

Tecido plano 1,4m de largura

Indicado Tecidos mais estruturados e inverno como crepe alfaiataria, viscose, tricoline, viscolinho, che

Busto com pence de ajuste

Quantidade de tecido para cada fa
o vestido:

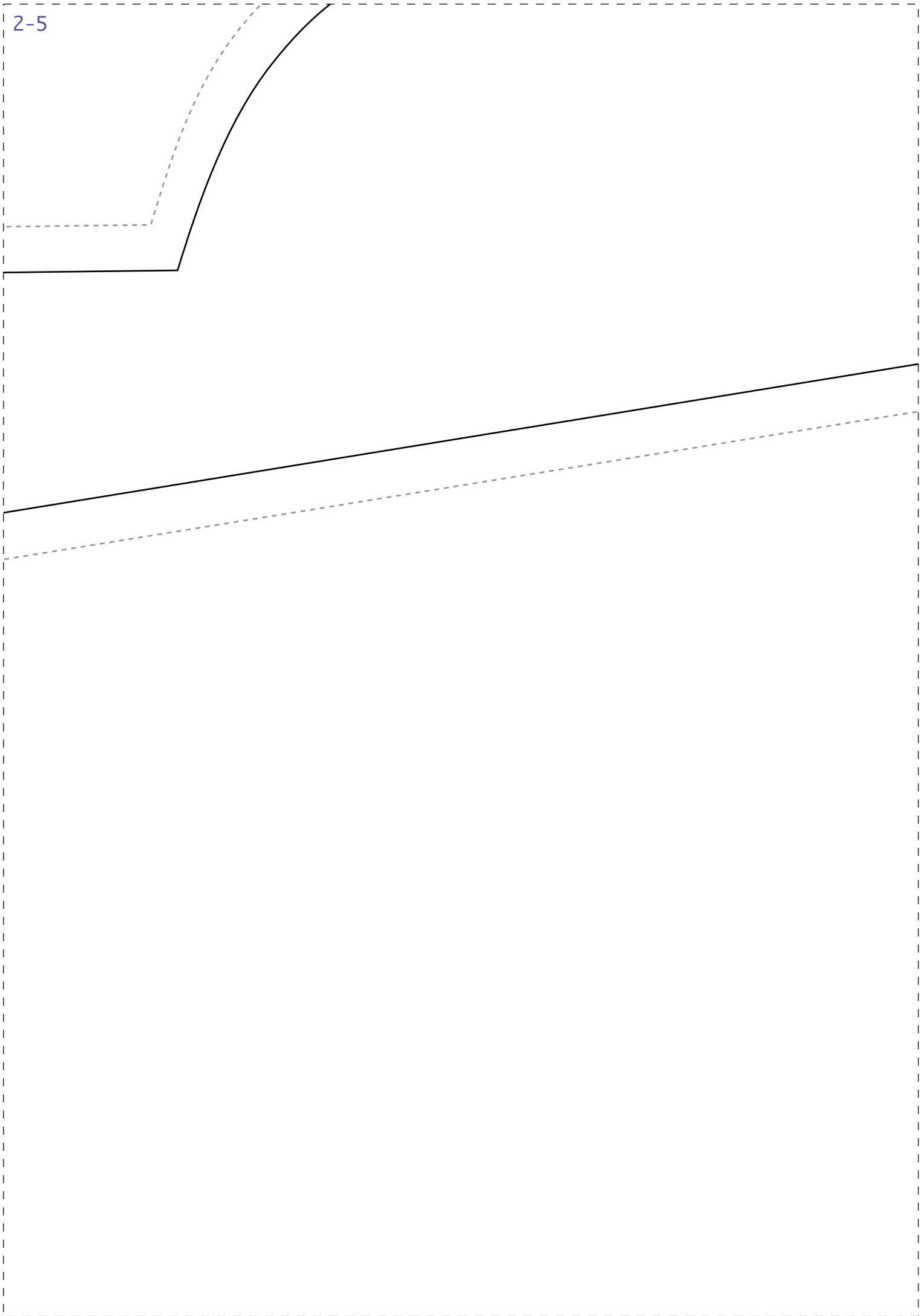
>1,2m para os tamanhos 36-40

>1,3m para os tamanhos 42-46

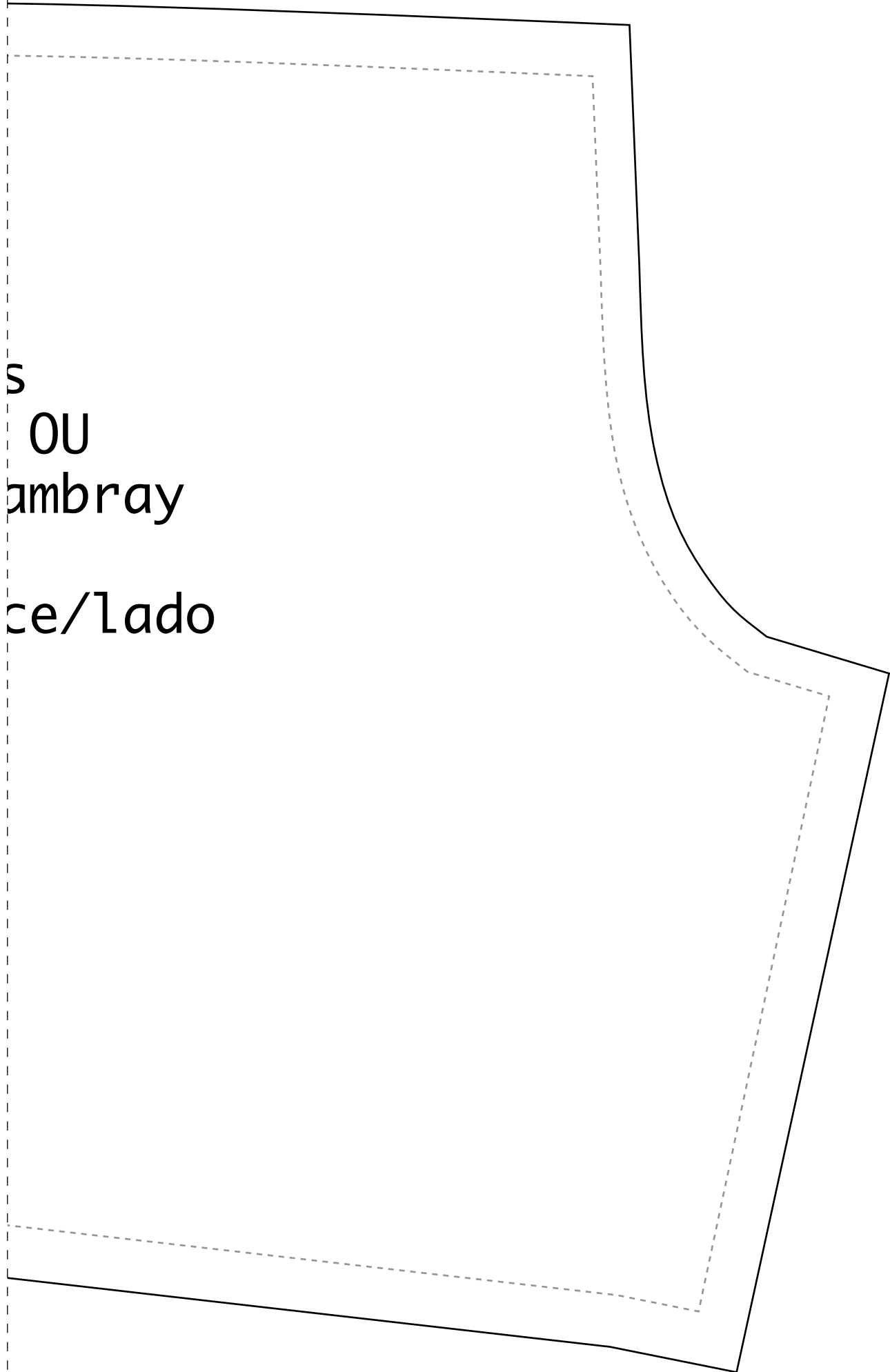
>1,7m para os tamanhos 48-50

>2m para os tamanhos 52-54

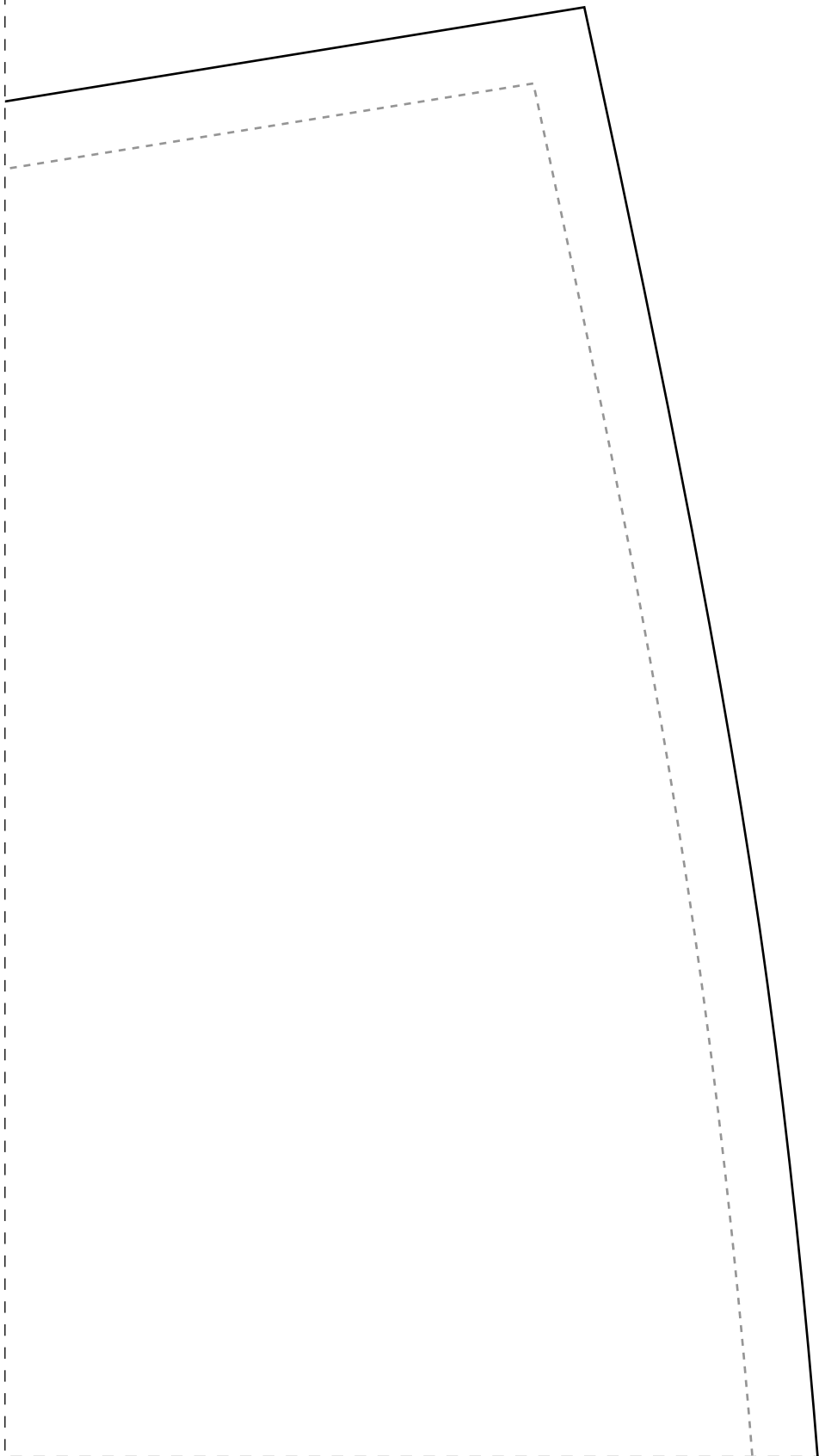
2-5



1-6



S
OU
ambray
ce/lado



3-6

