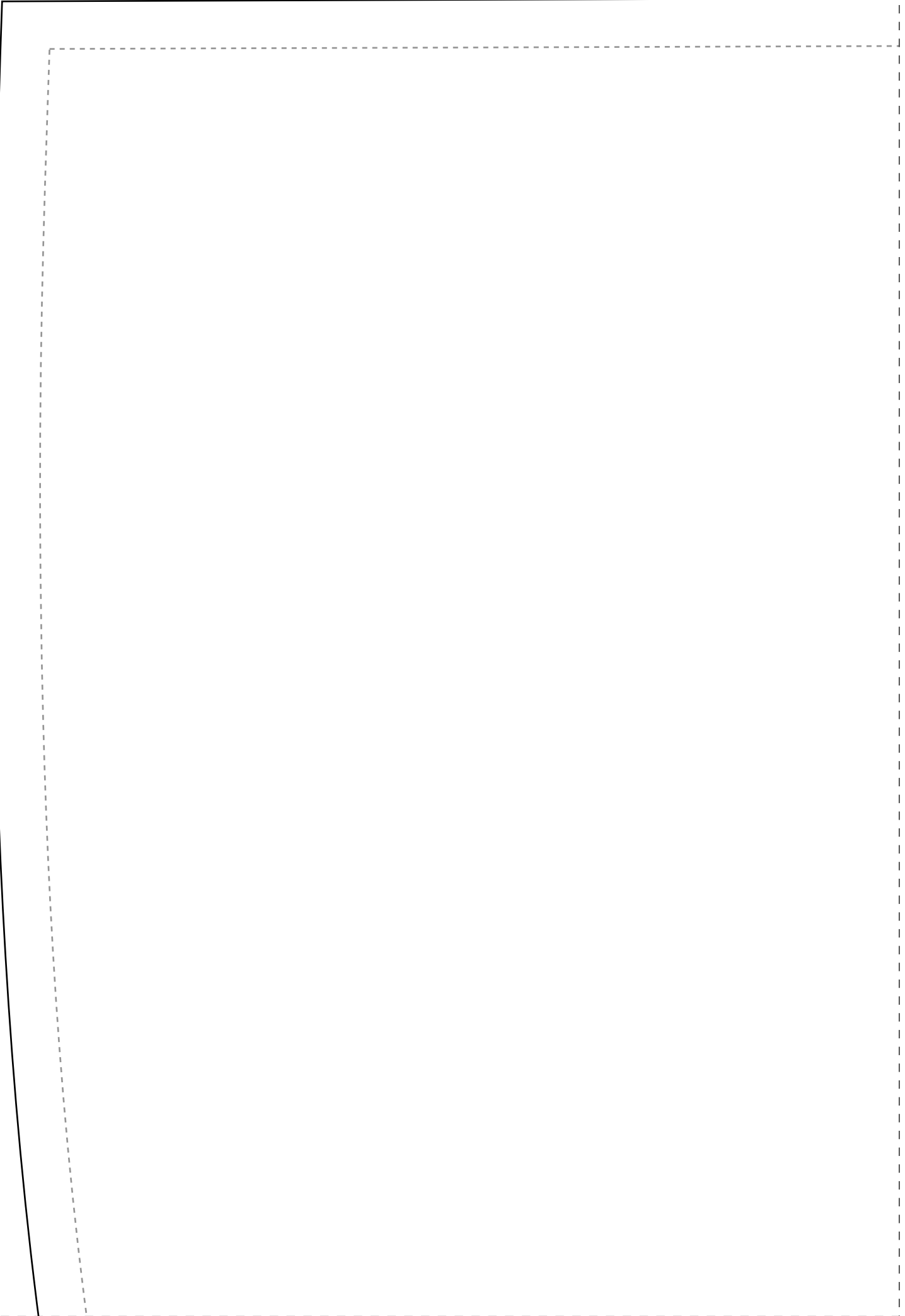
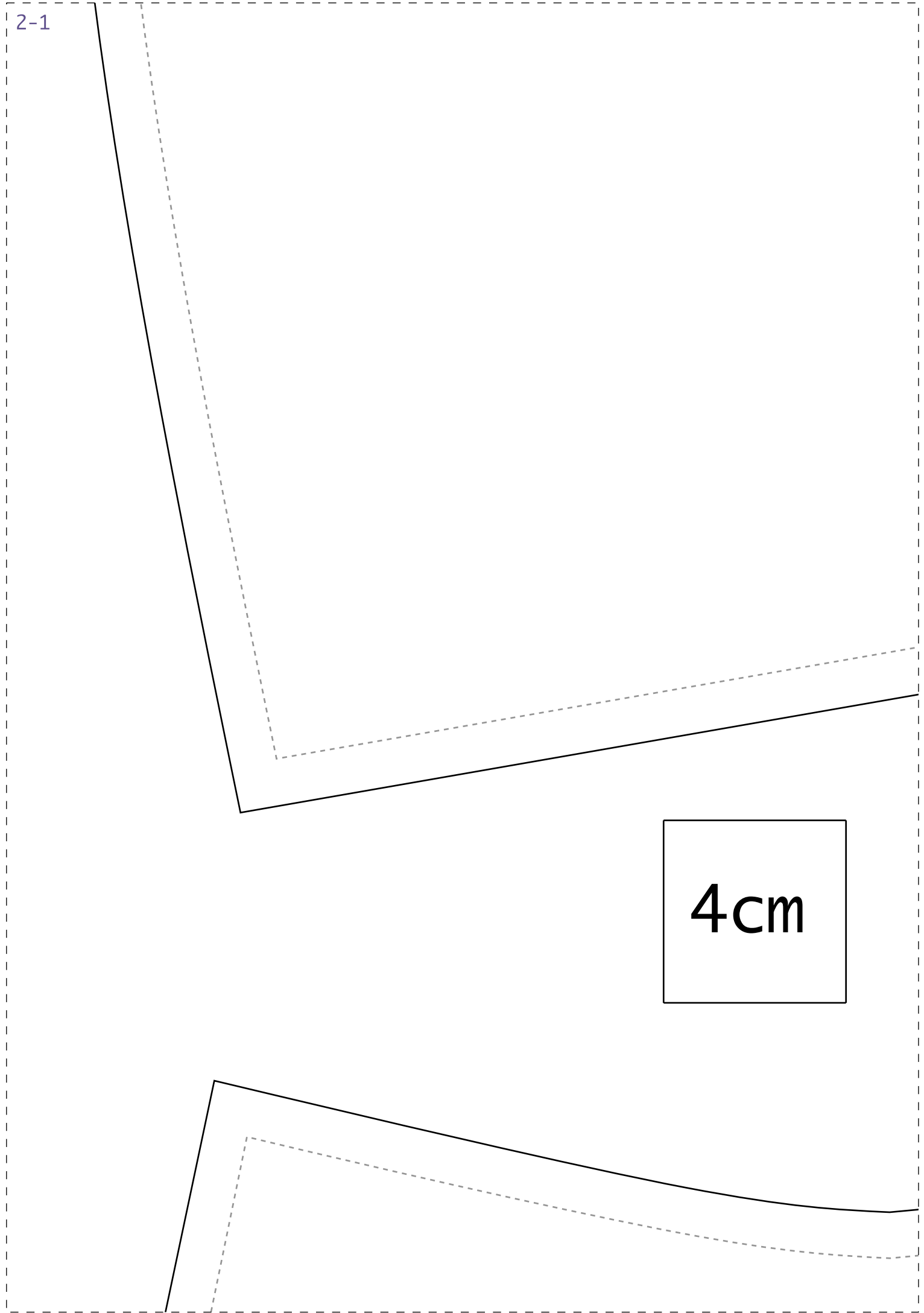


1-1

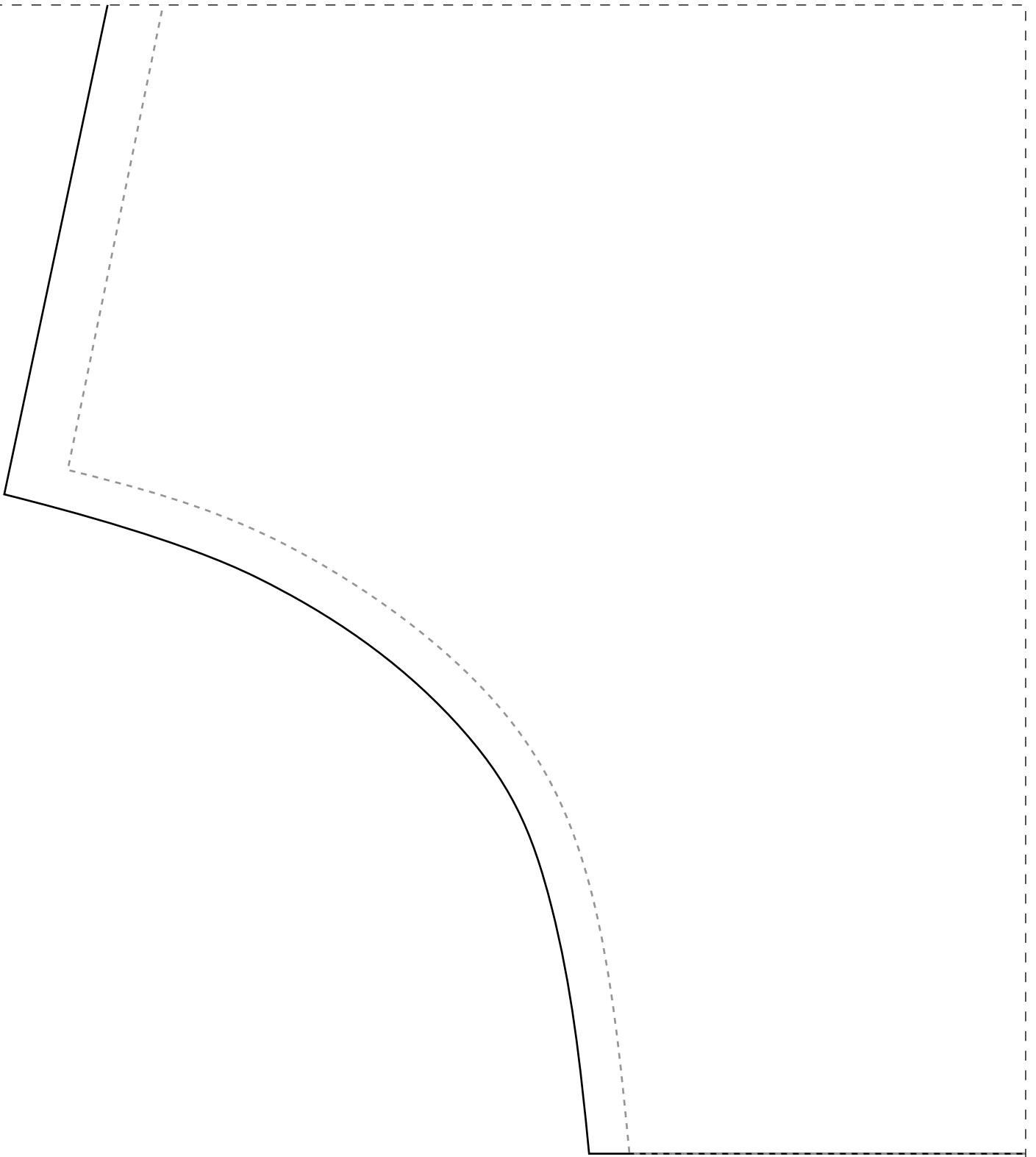


2-1

4cm

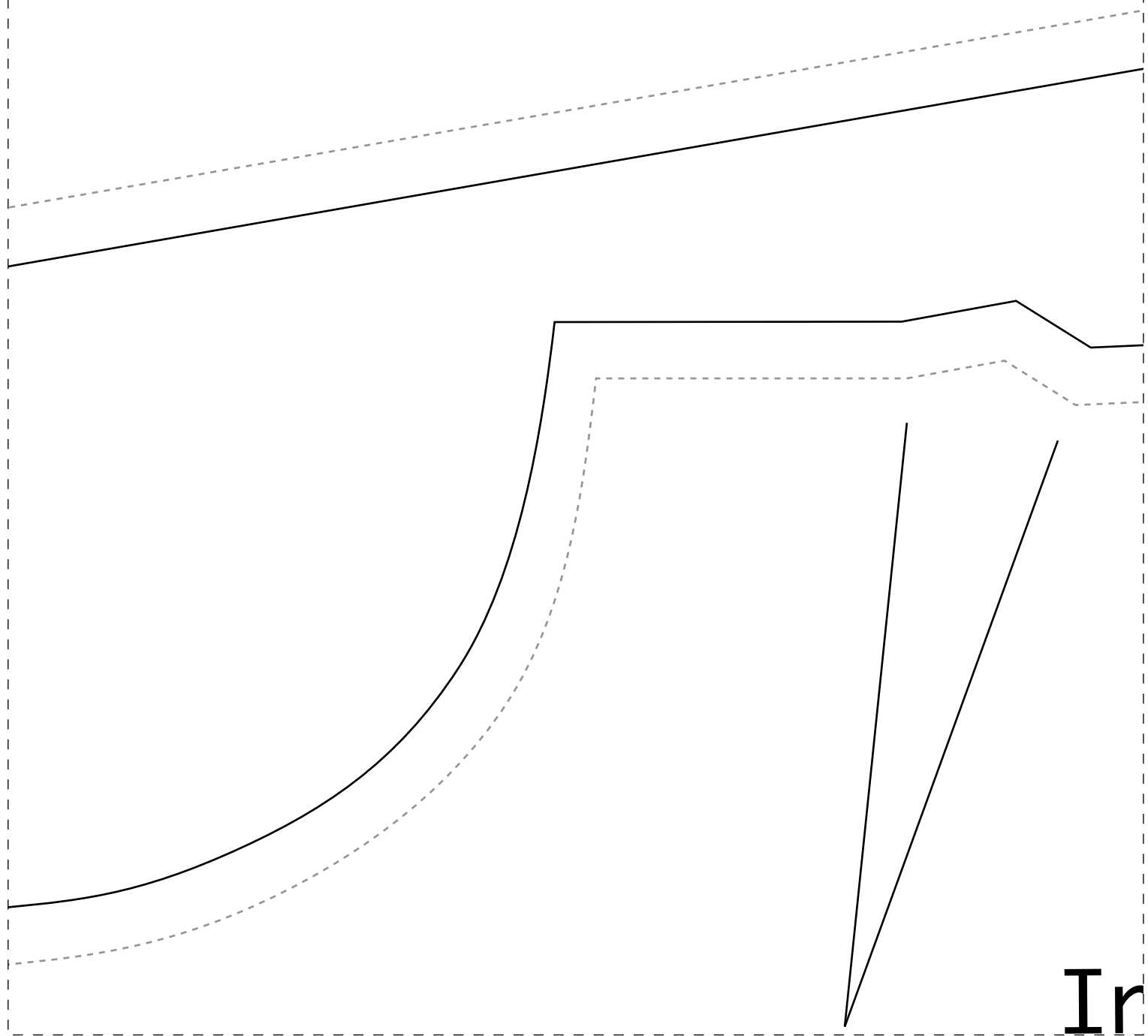


3-1



IDD21

2-2

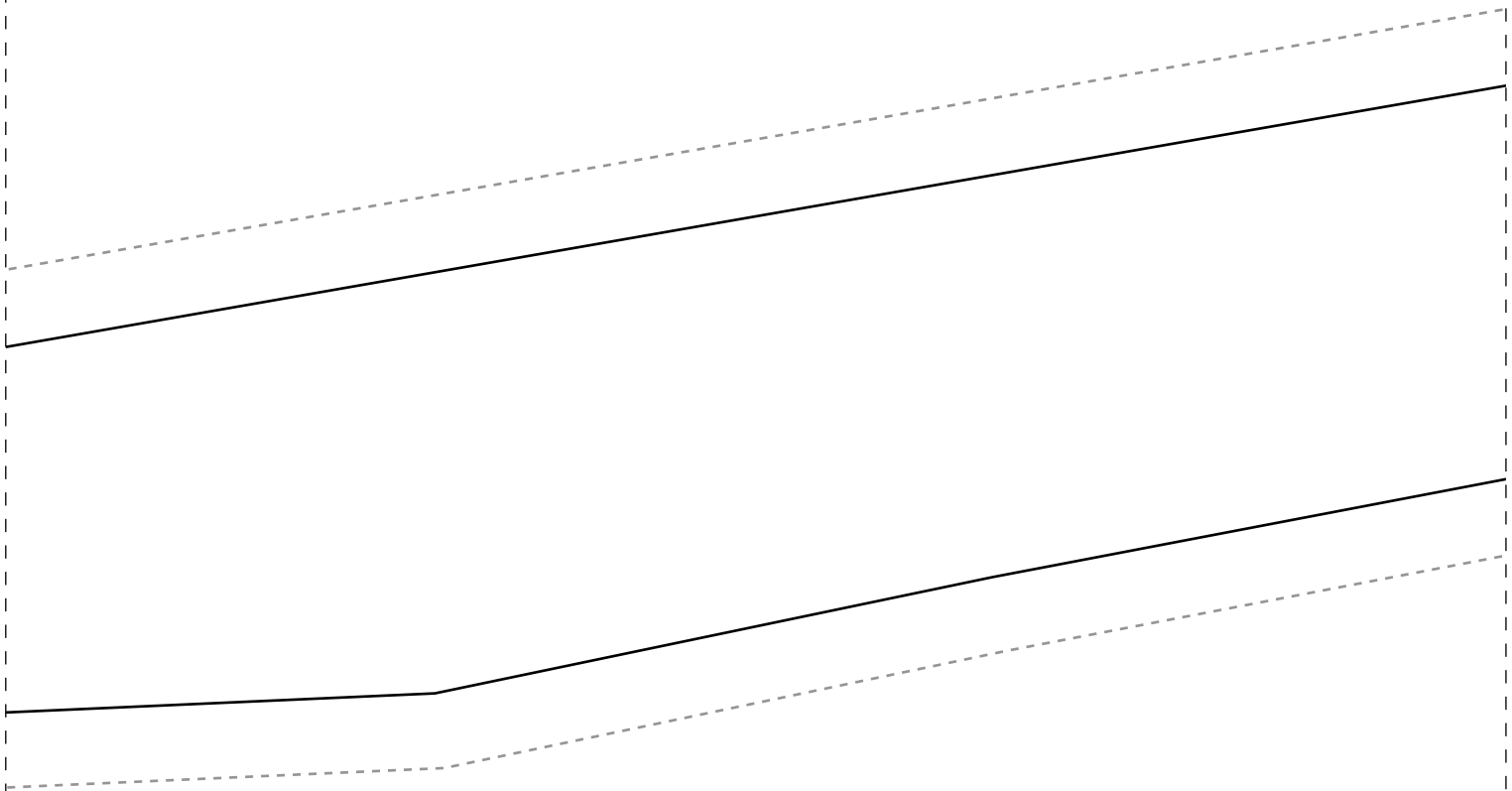


Ir

Frente 1

IDD21

Costas 2x-52



3-3

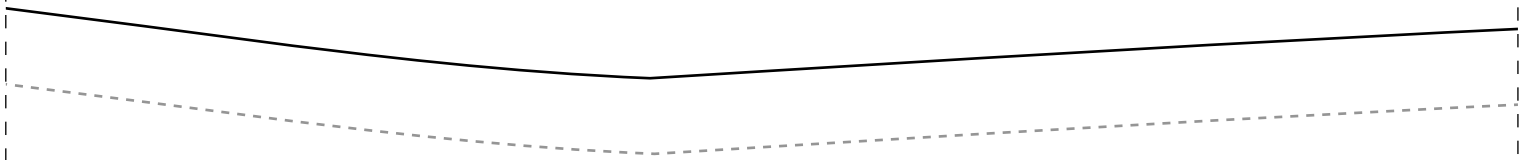
semana CMC - Agora é Sua vestido Dupla Face

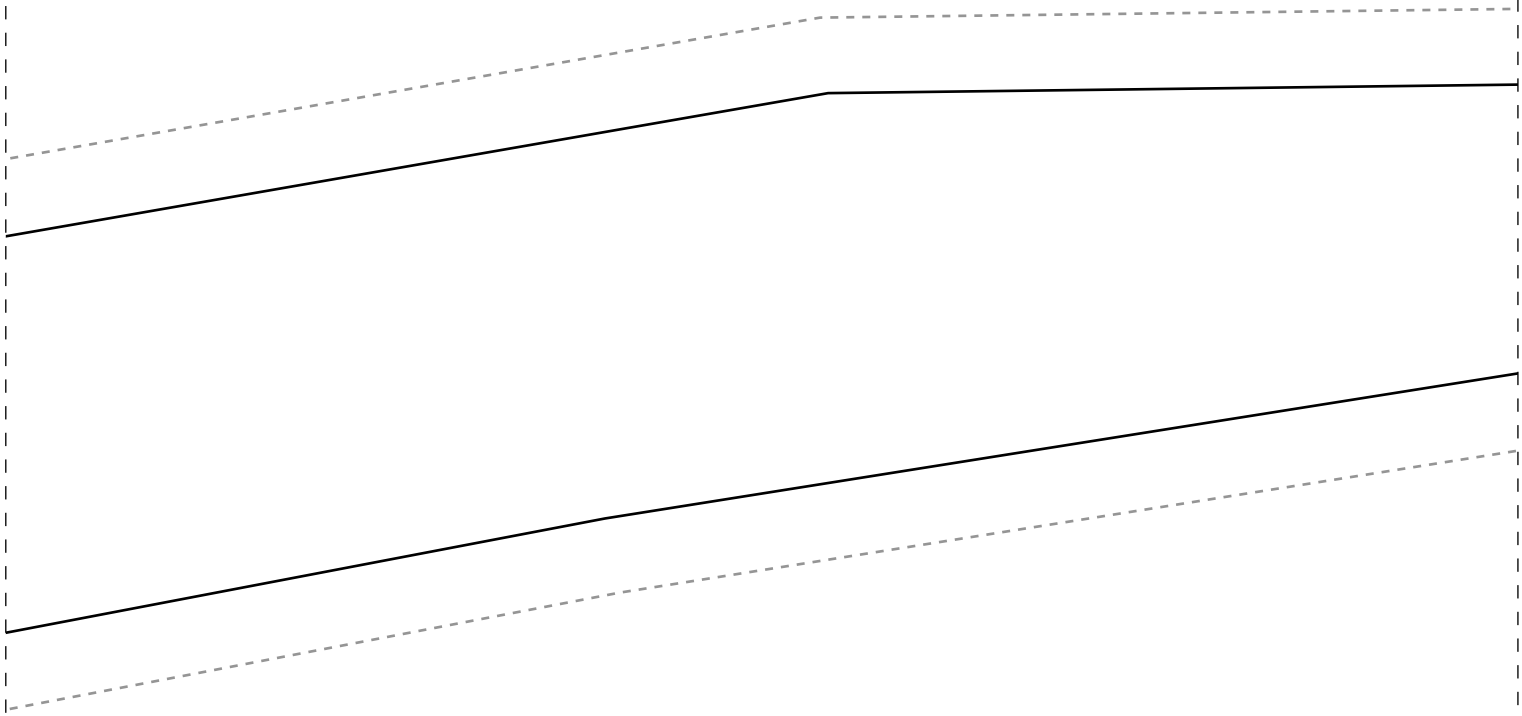
x-52



DOBRA

1-4



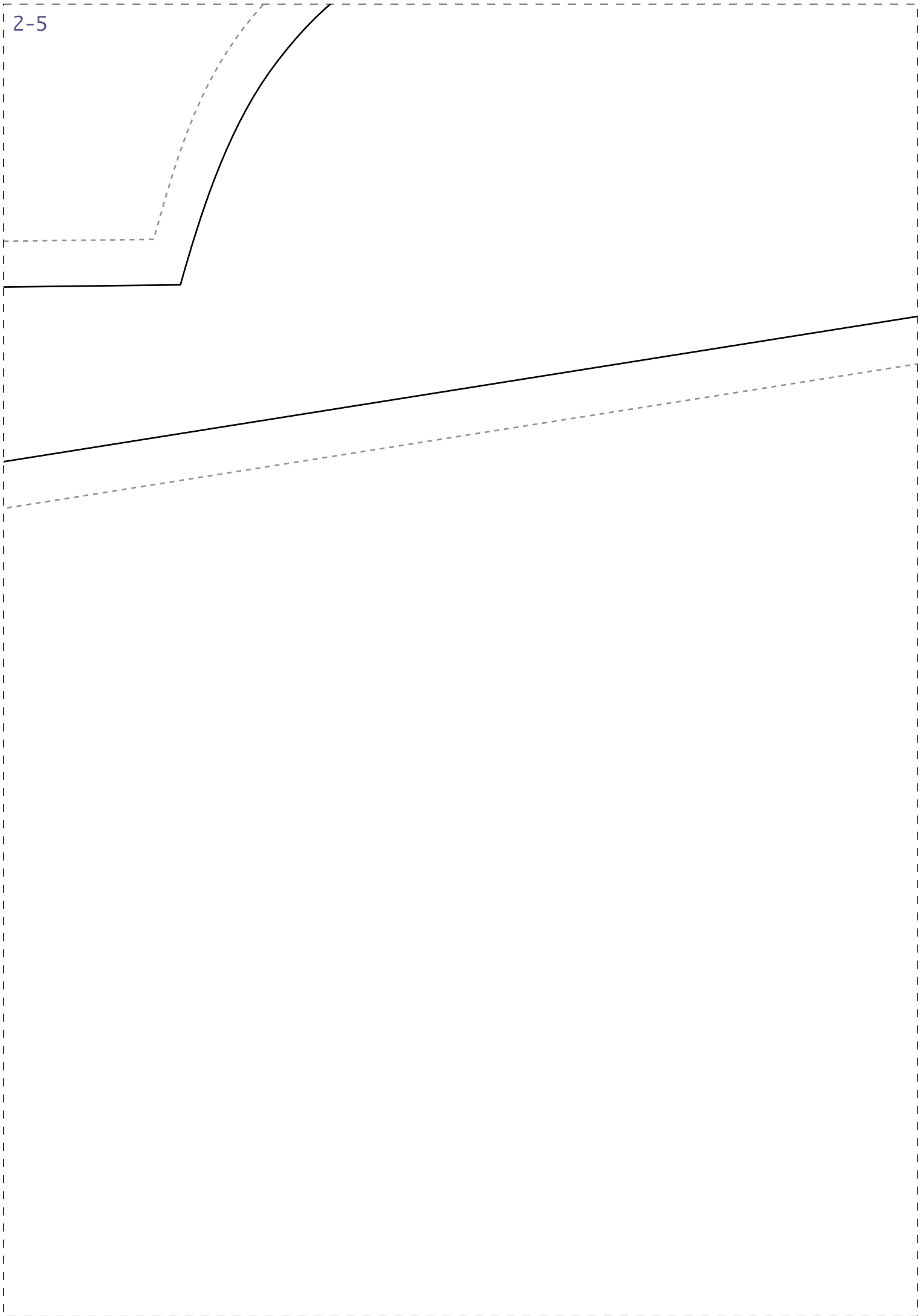


3-4 Vez

Ficha Técnica:

- Tecido plano 1,4m de largura
- Indicado Tecidos mais estruturados de inverno como crepe alfaiate, viscose, tricoline, viscolinh
- Busto com pence de ajuste
- Quantidade de tecido para cada do vestido:
 - =>1,2m para os tamanhos 36-40
 - =>1,3m para os tamanhos 42-46
 - =>1,7m para os tamanhos 48-50
 - =>2m para os tamanhos 52-54

2-5



l
urados
aria, OU
o, chambray
da face/lado

