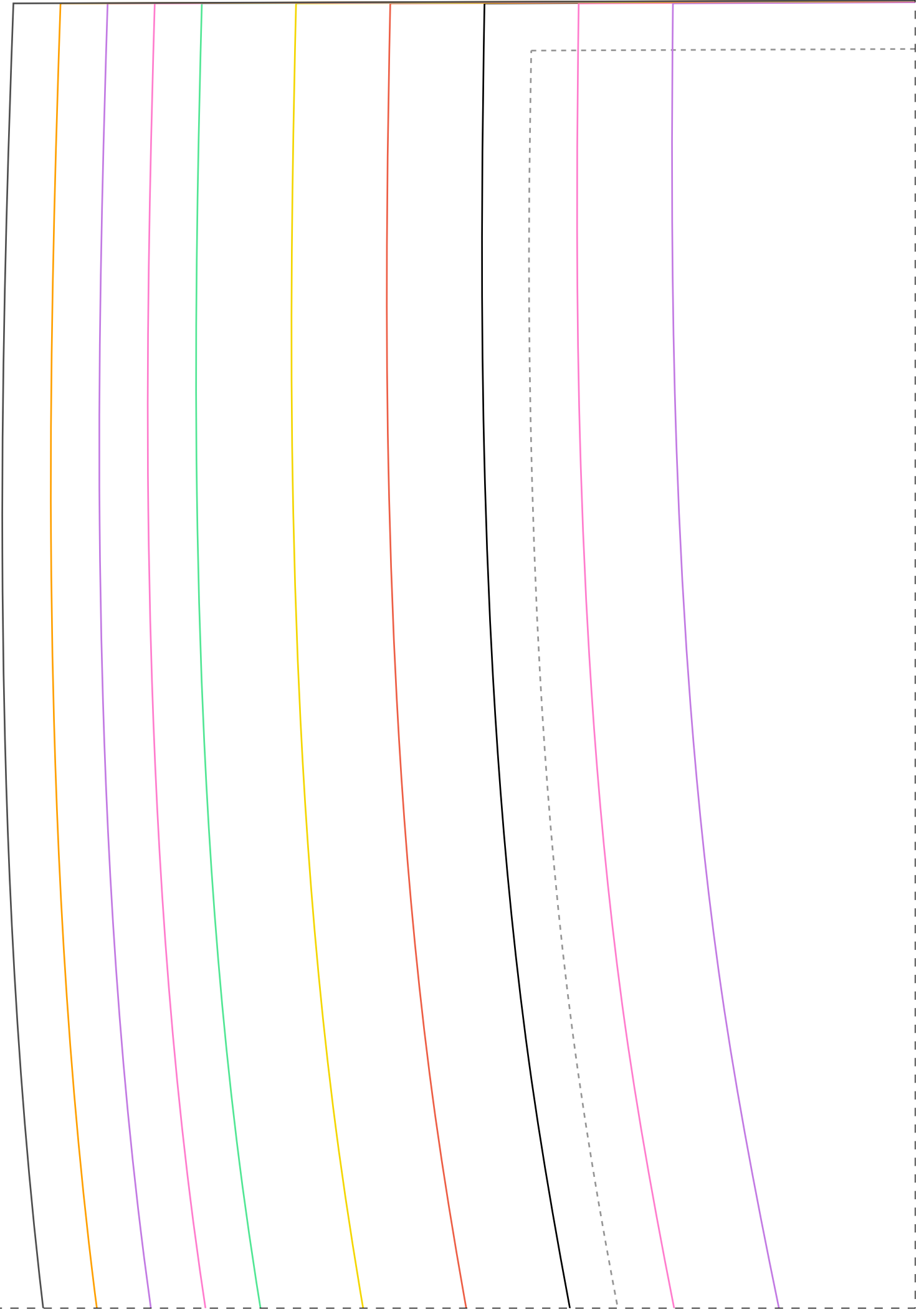
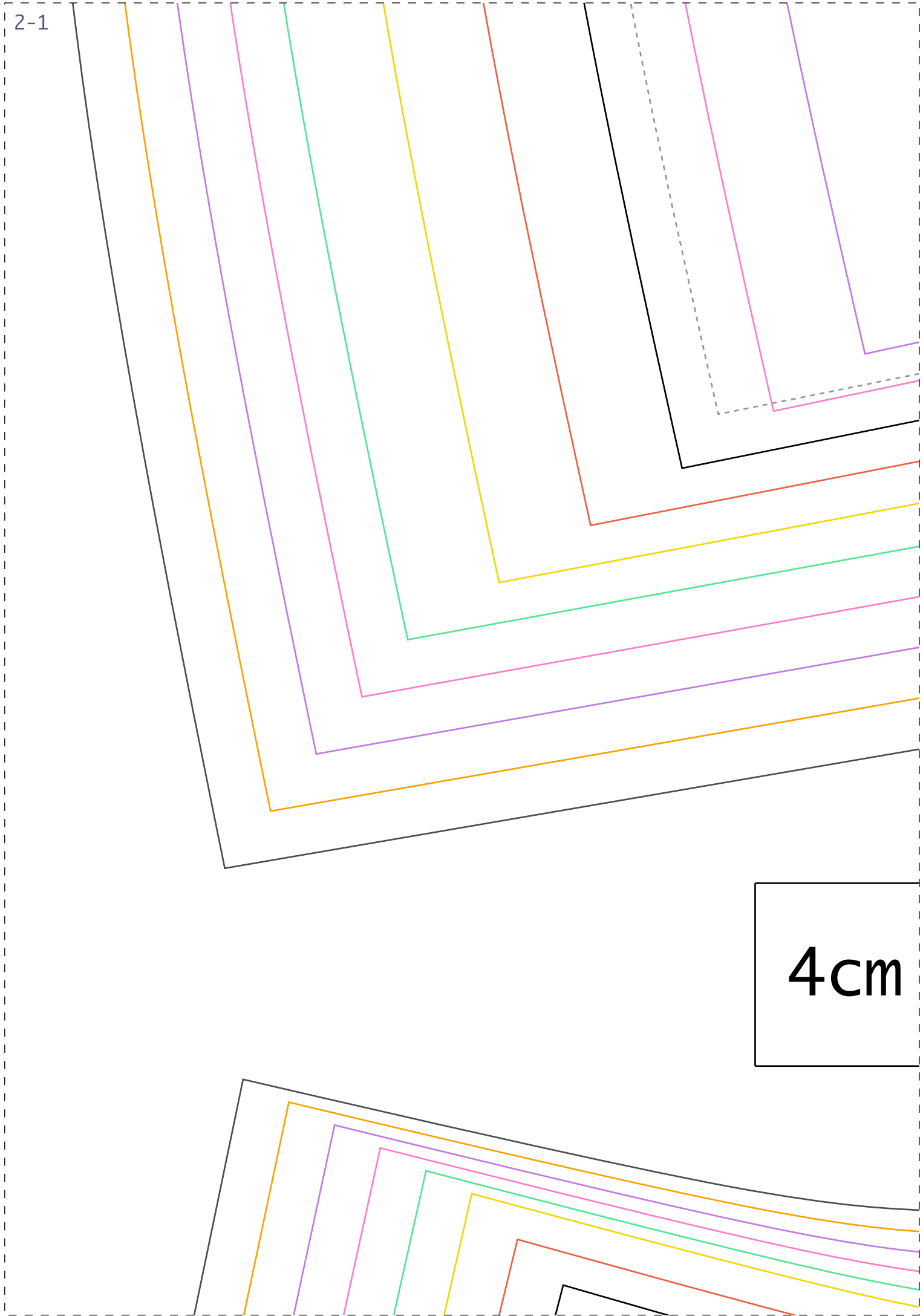


1-1

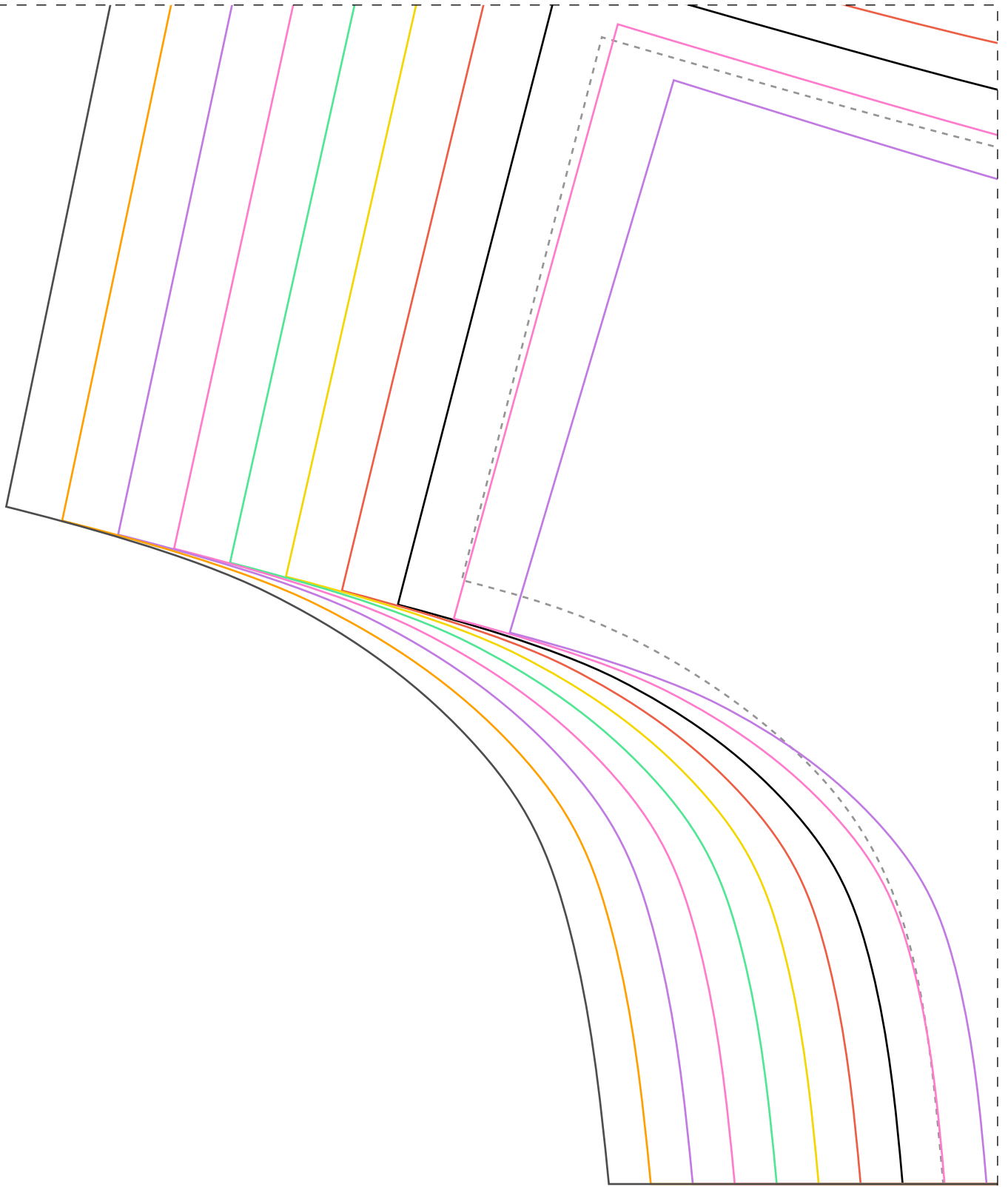


2-1

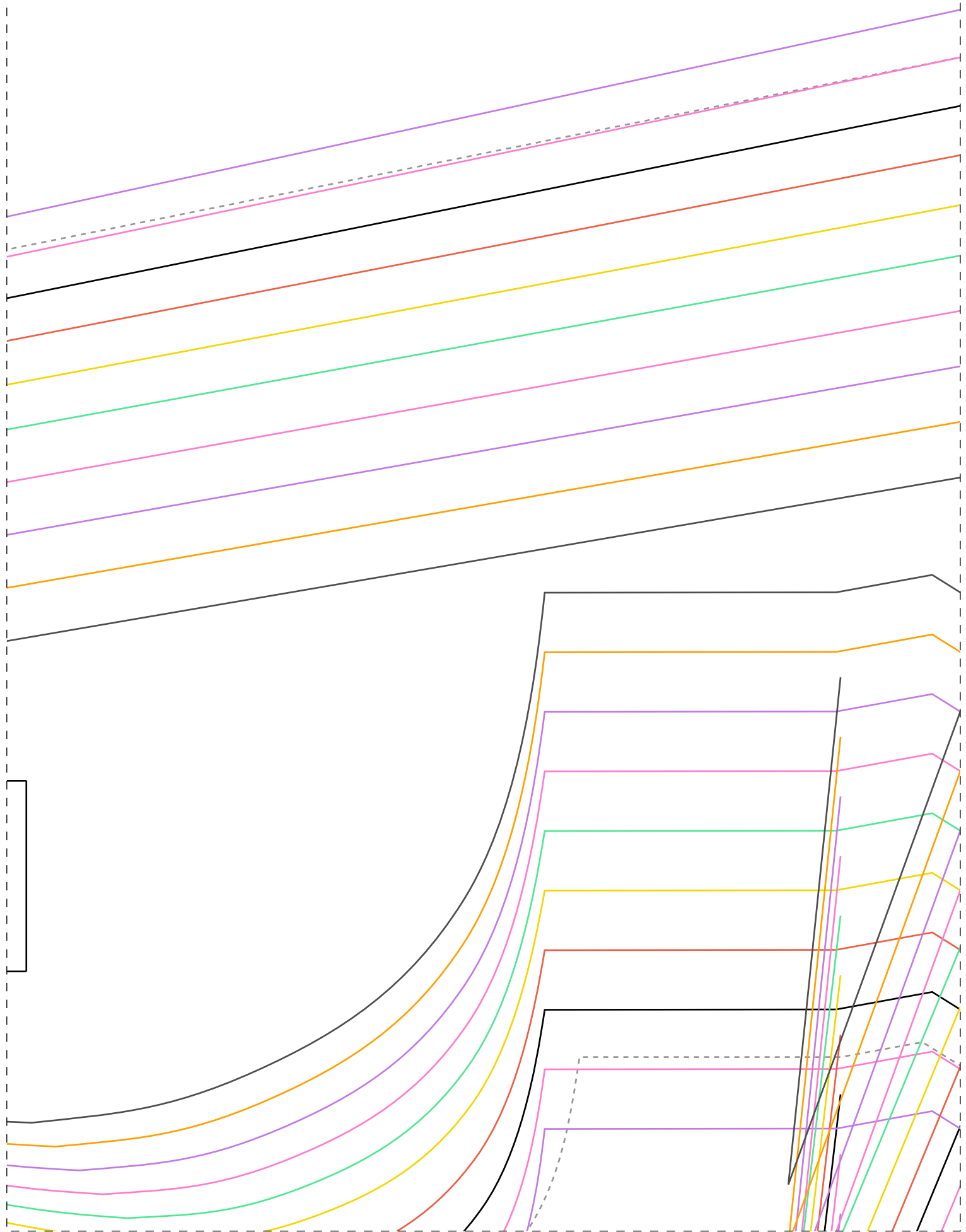


4cm

3-1



IDD21



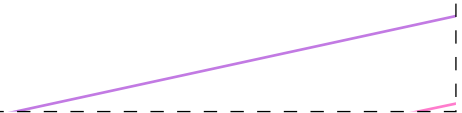
3-2

Frente

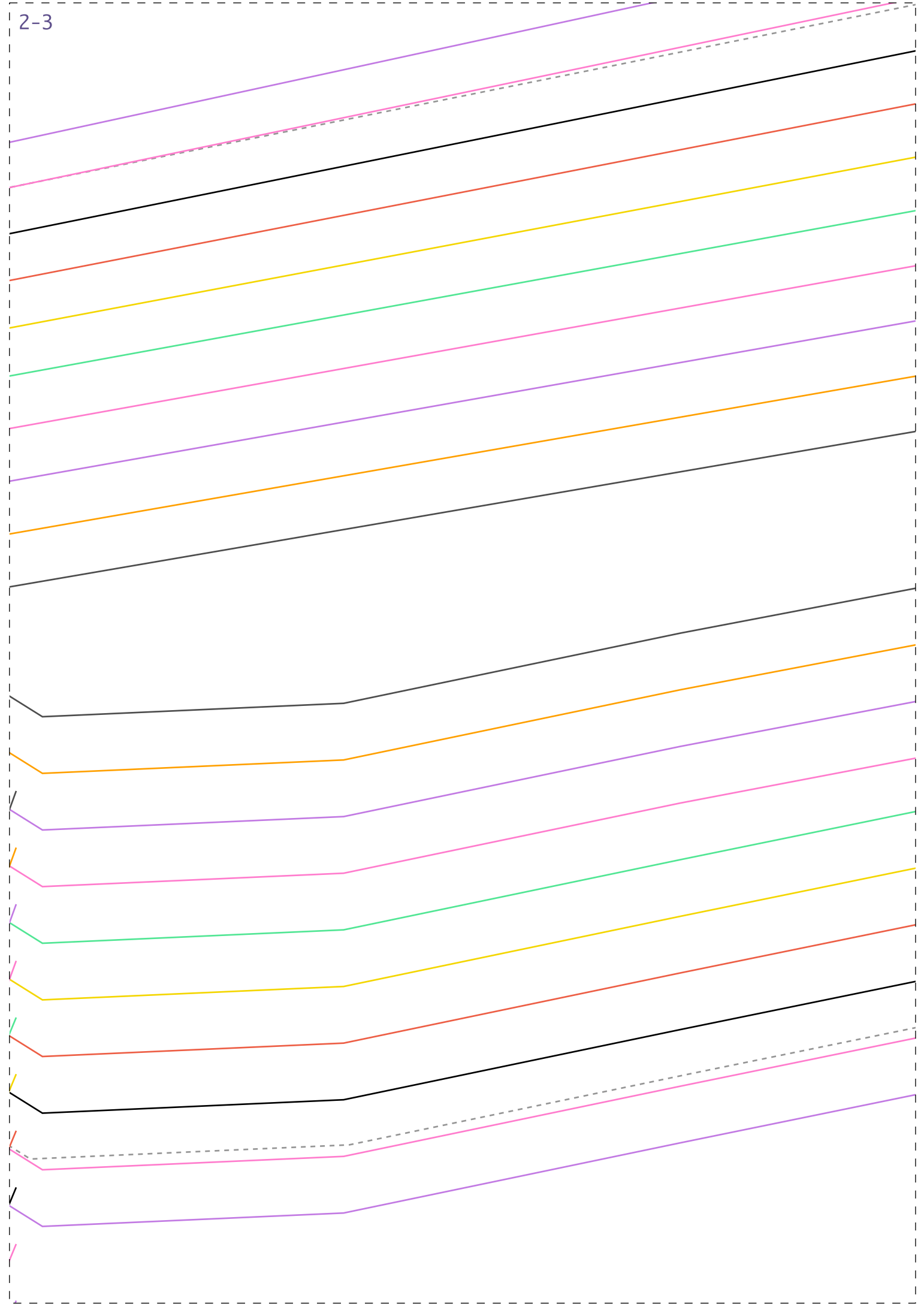
IDD21

1-3

Costas 2x



2-3



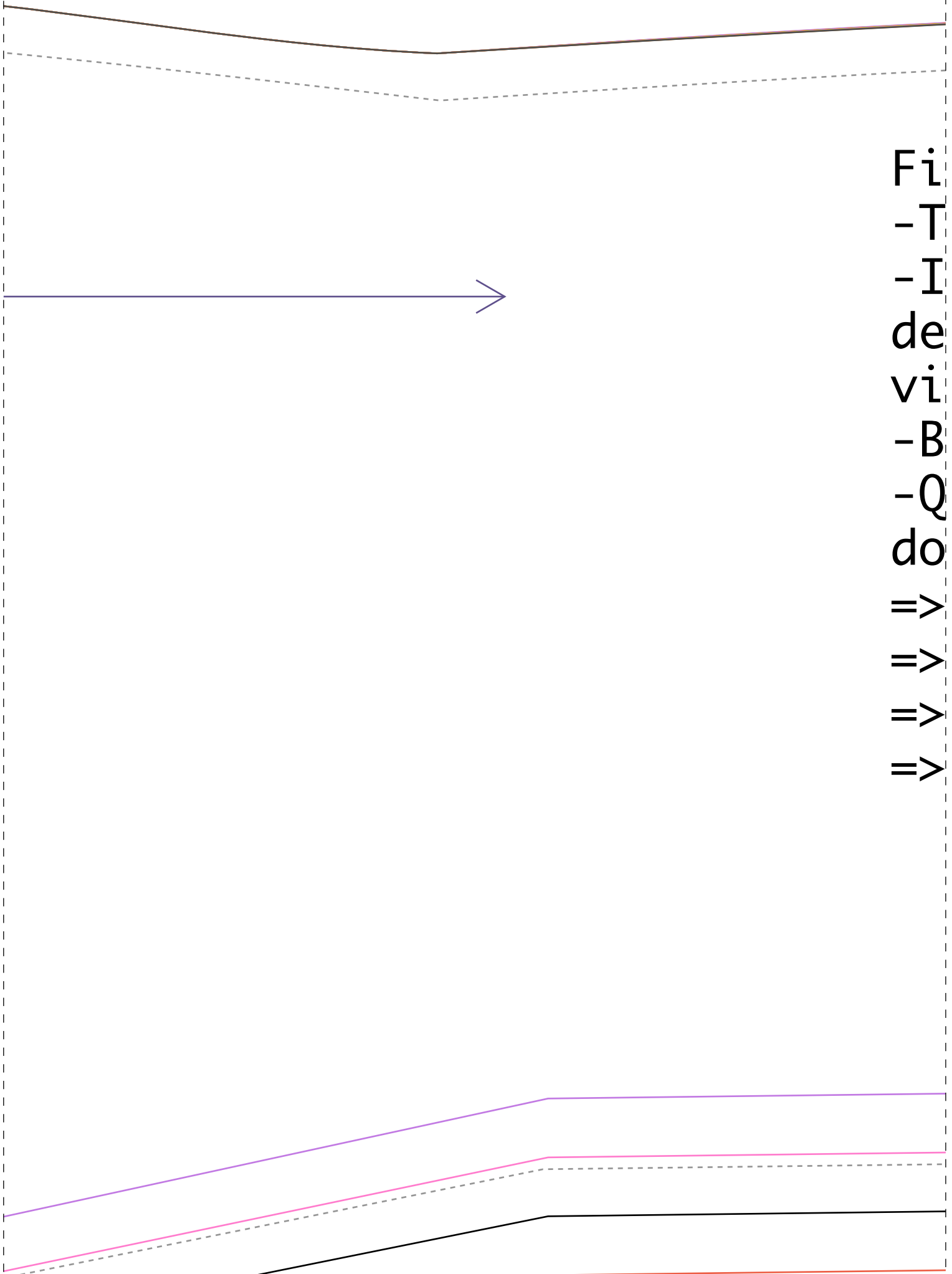
Instituto Semana CM Vestido D

1x



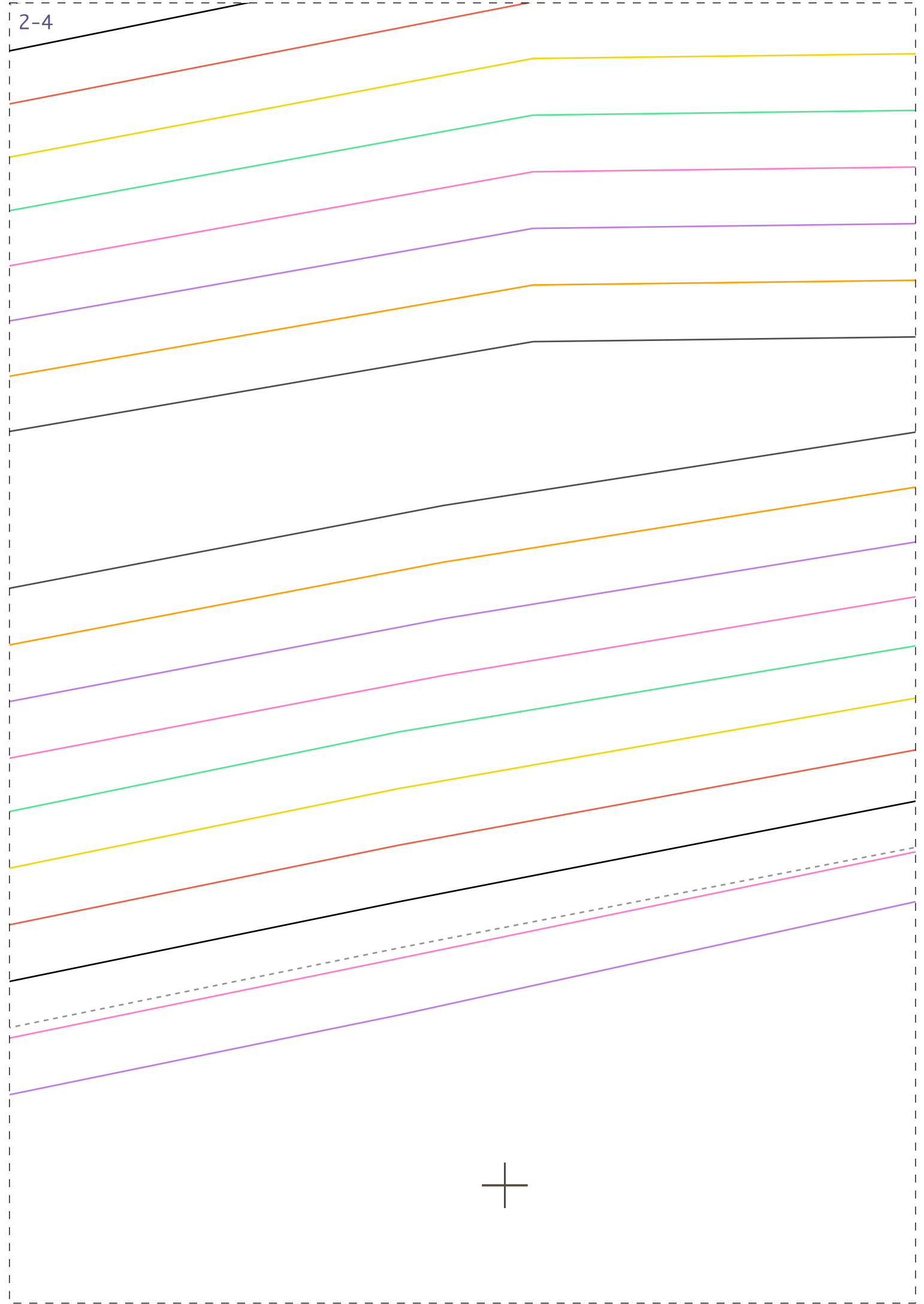
COBRAR

1-4



Fi
-T
-I
de
vi
-B
-Q
do
=>
=>
=>
=>

2-4



+

Diana Demarchi

C - Agora é Sua Vez
upLa Face

cha Técnica:

tecido plano 1,4m de largura

indicado Tecidos mais estruturados

inverno como crepe alfaiataria, (

scose, tricoline, viscolinho, char

usto com pence de ajuste

quantidade de tecido para cada face

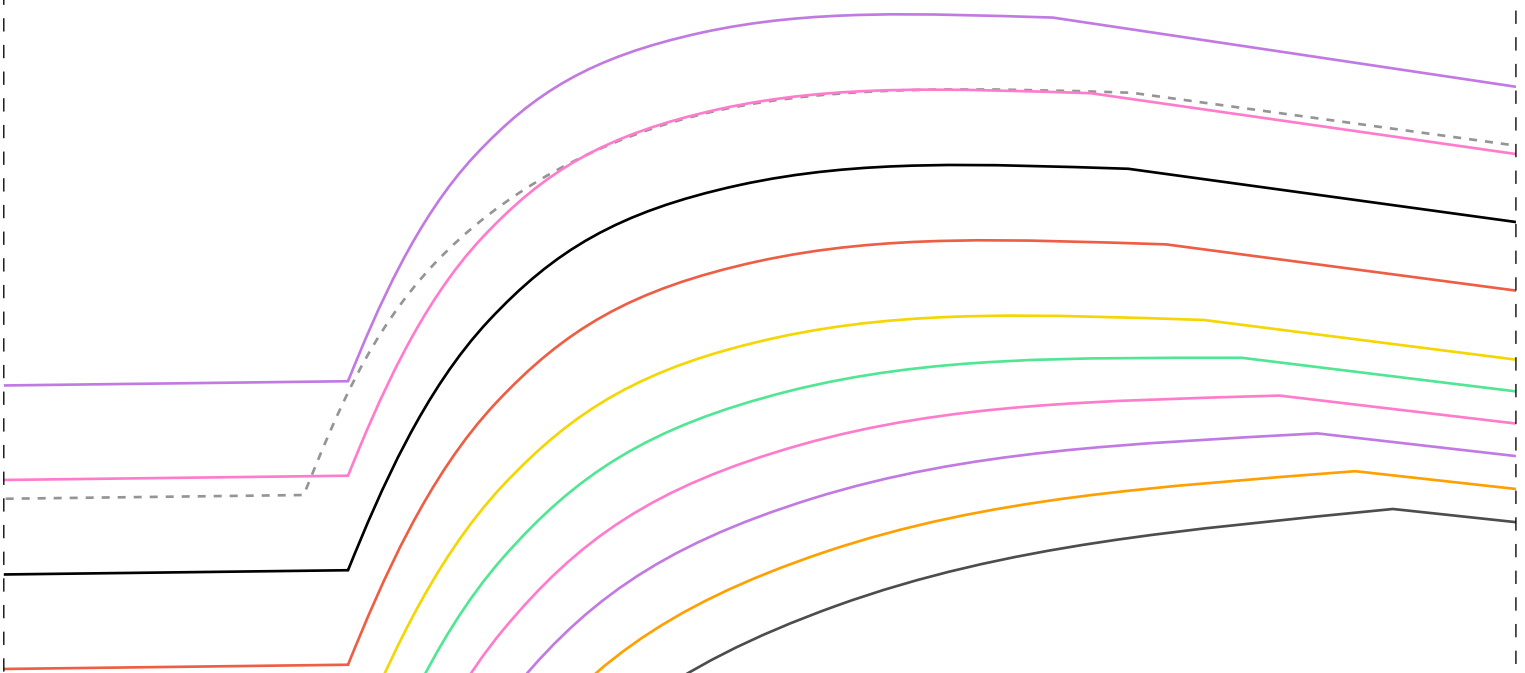
vestido:

1,2m para os tamanhos 36-40

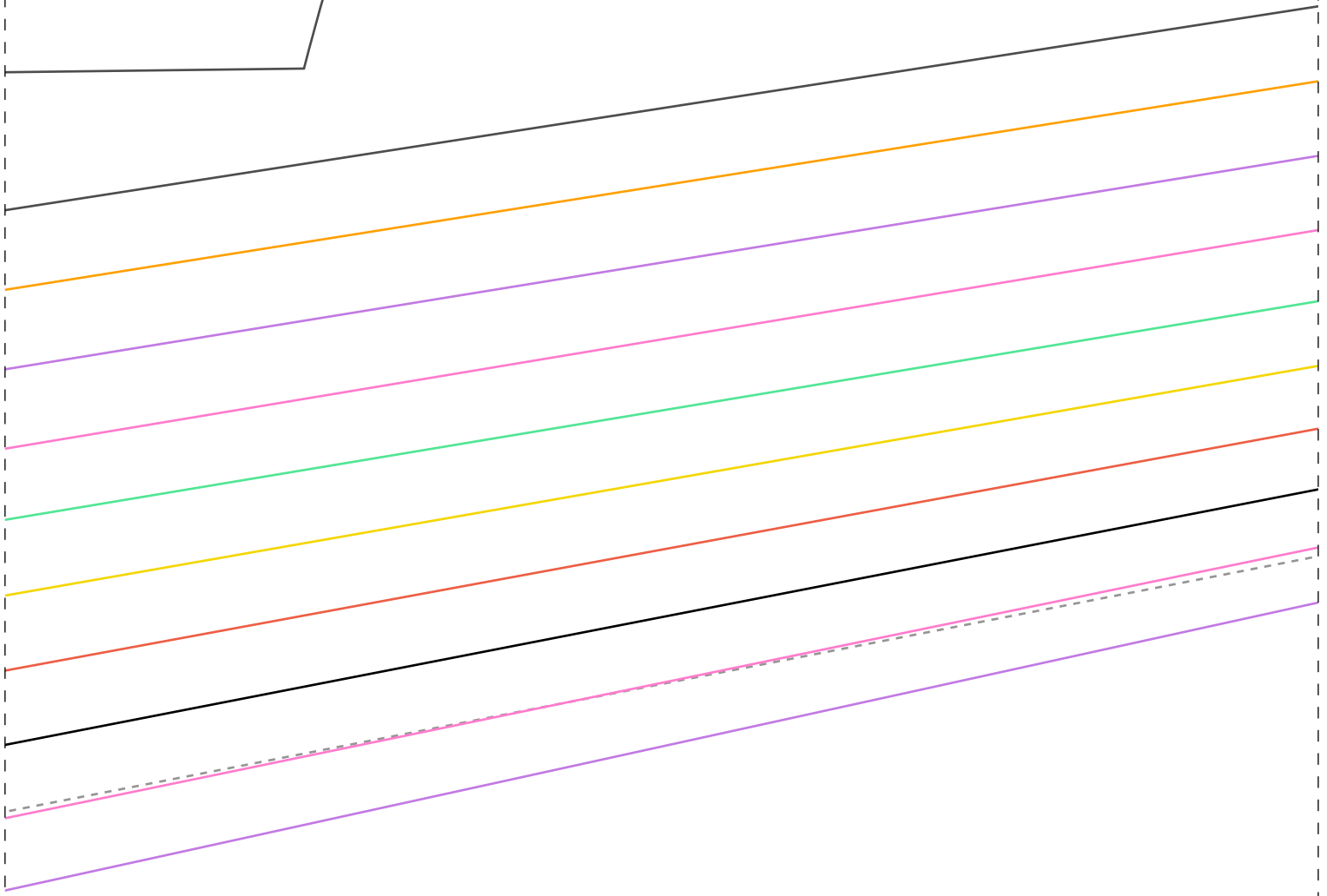
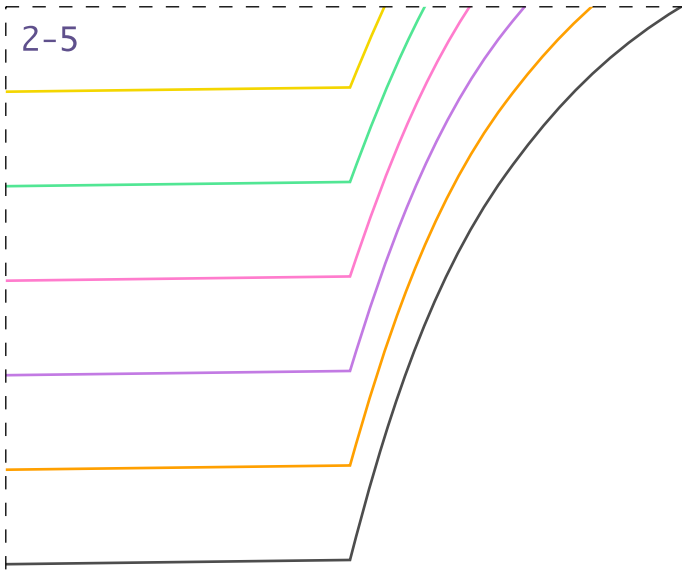
1,3m para os tamanhos 42-46

1,7m para os tamanhos 48-50

2m para os tamanhos 52-54



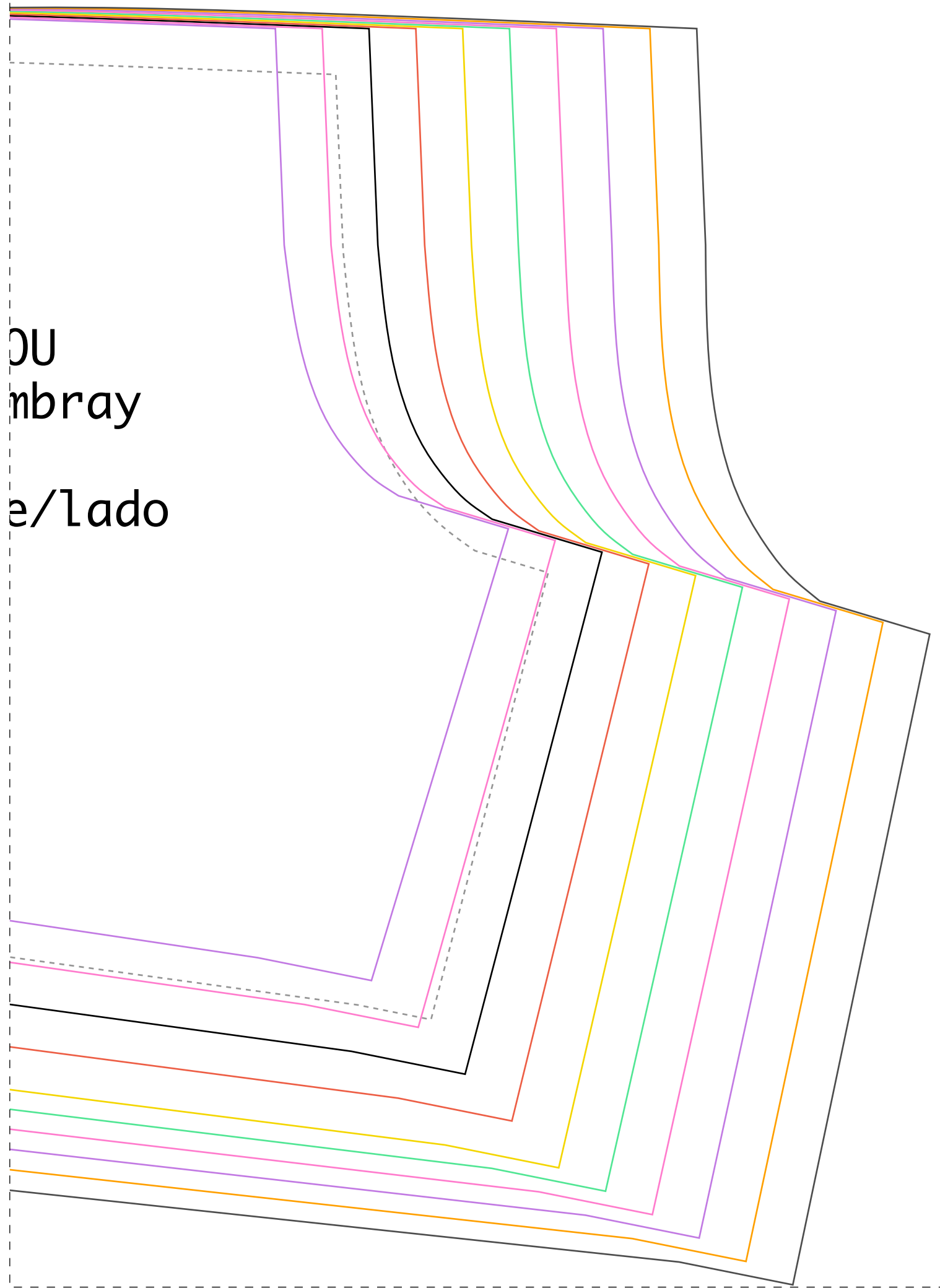
2-5

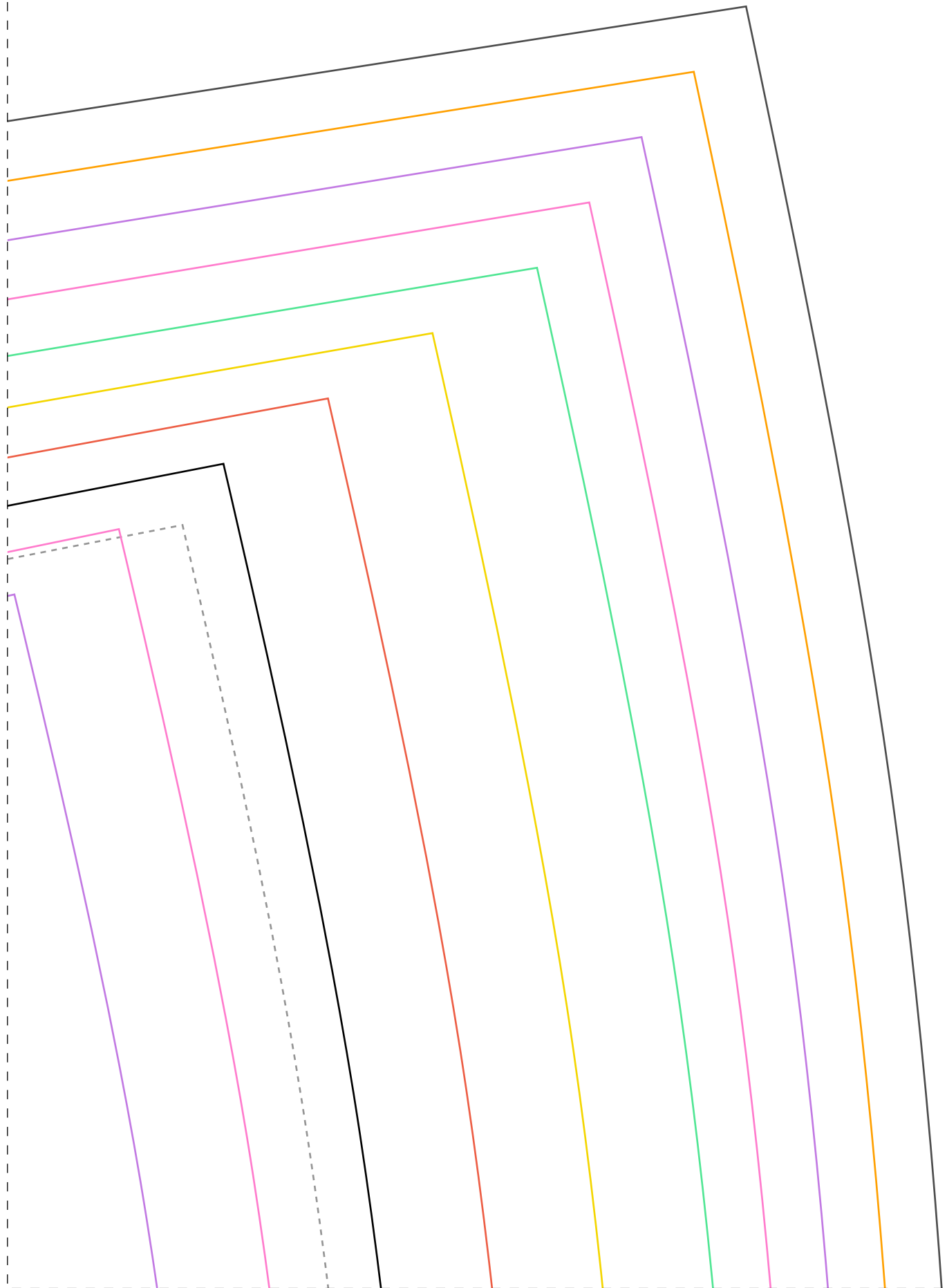




1-6

OU
mbray
e/lado





3-6

