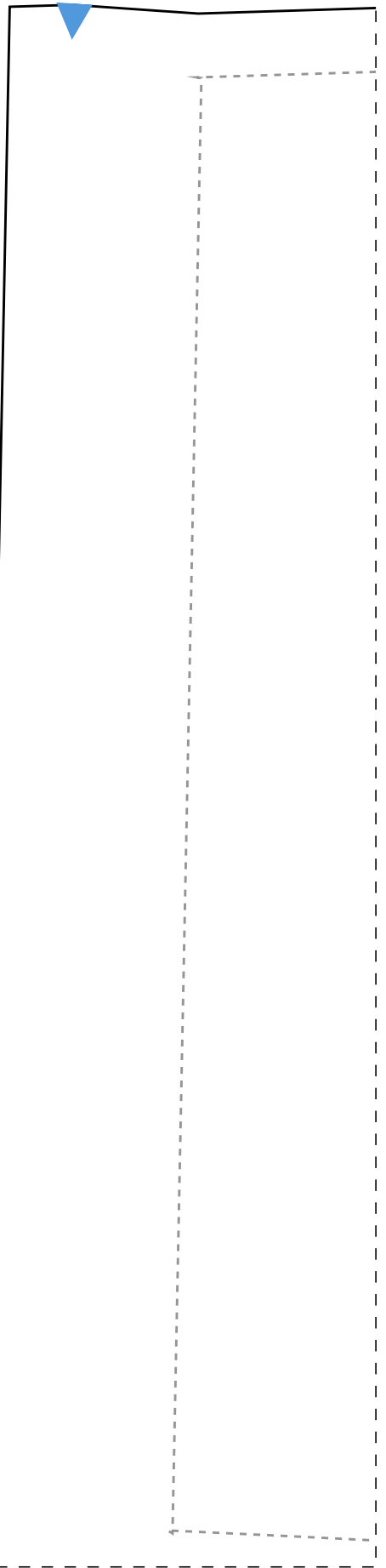


1-1

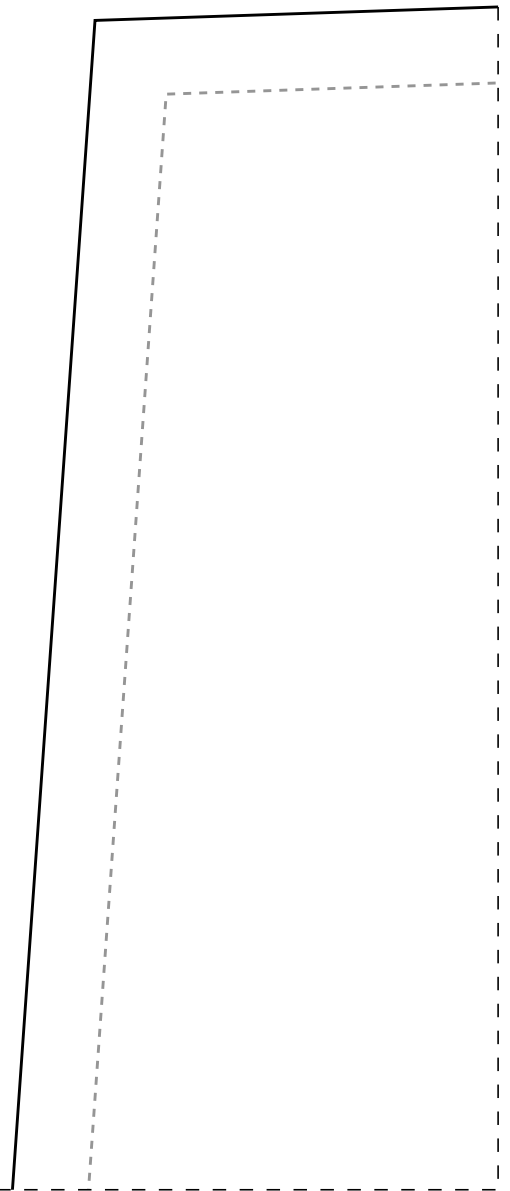
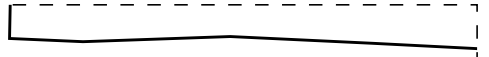


Cós 2x-36

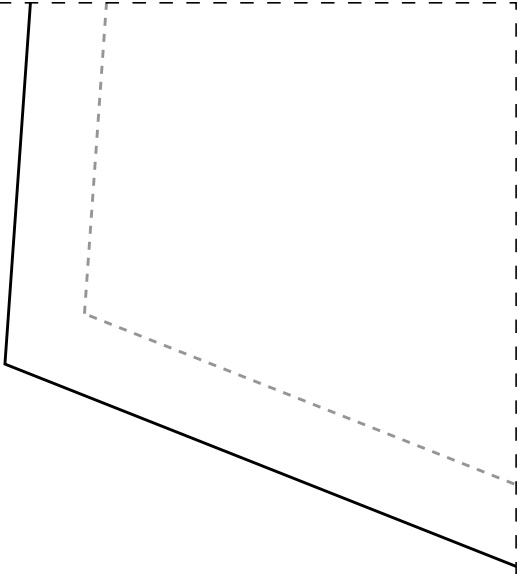


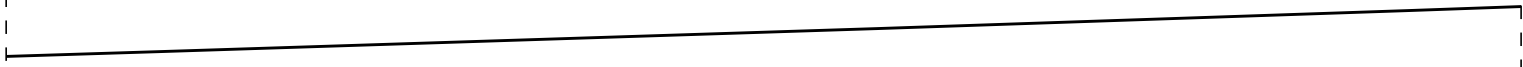
IDD20

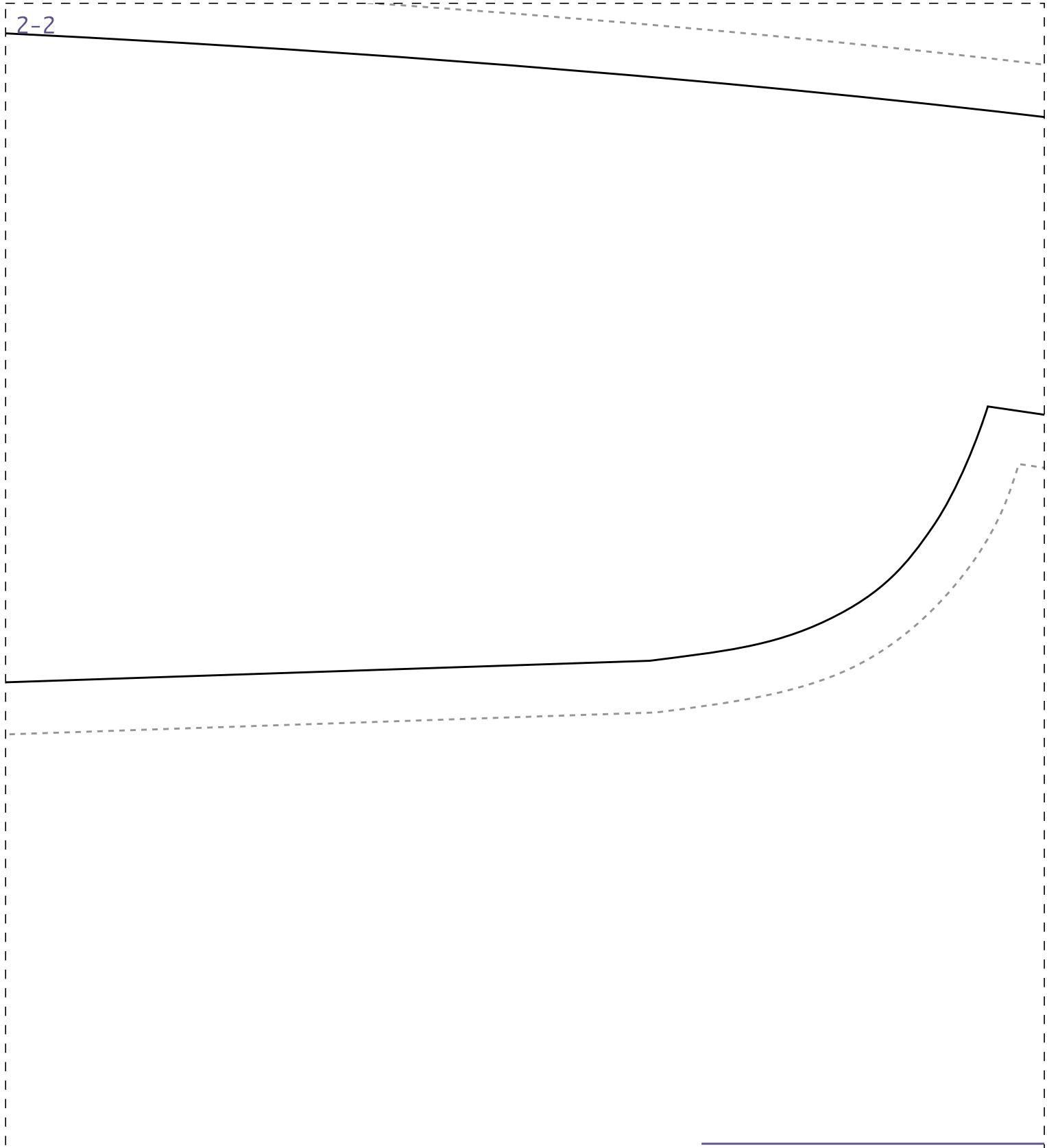
2-1



4cm







Ficha:

- Tecido plano 1,4m d
- Indicado tecidos fl
viscose, viscolinho

3-2

chambray, etc

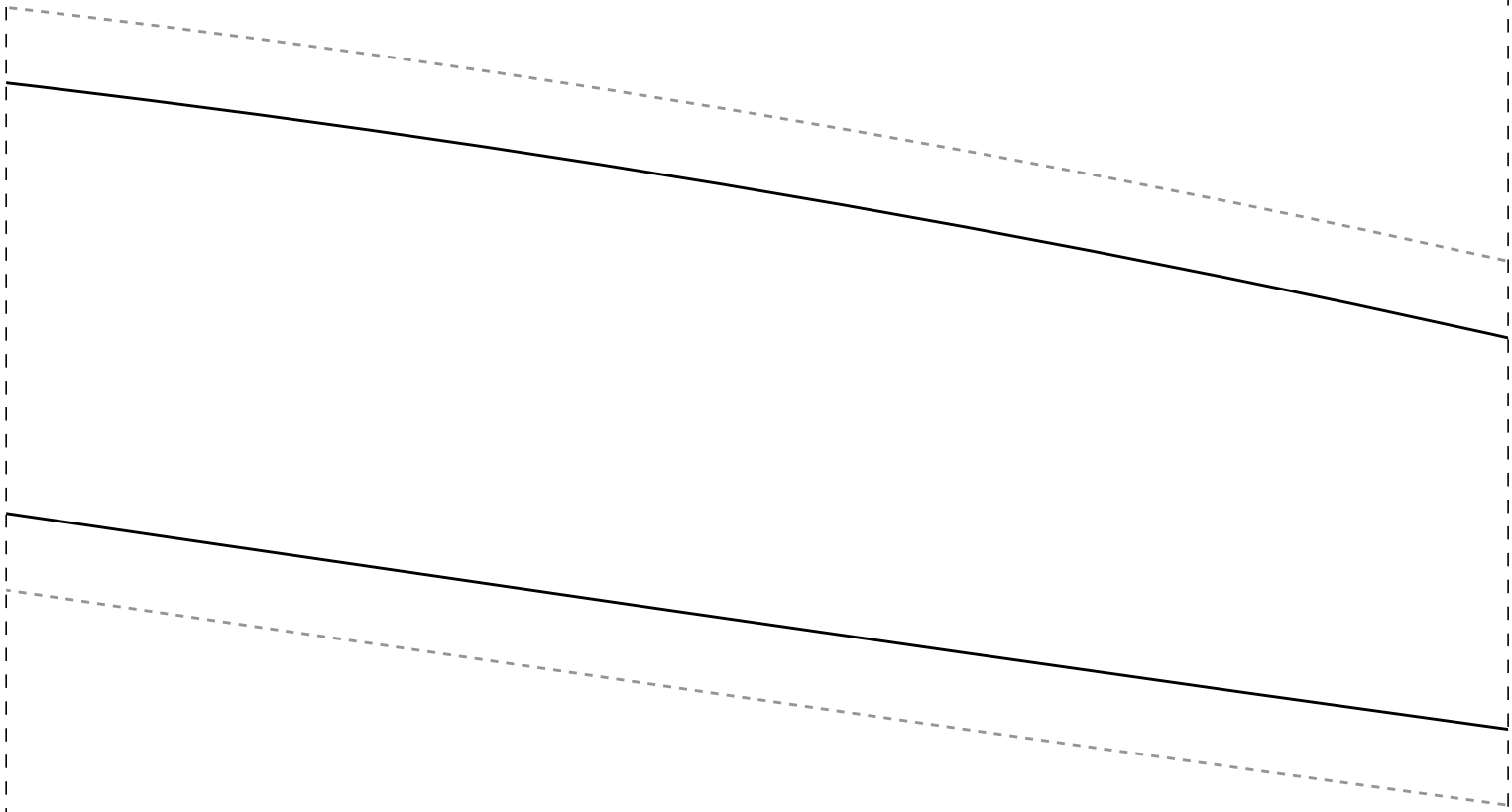
- Barra com bainha 3c
- Medidas Elástico: 3
- 40-68cm/42-70cm/44-7
- 50-80cm/52-82cm/54-8
- 1,6m para os tamanh
- 1,8m para os tamanh
- 2m para os tamanhos
- 2,1m para os tamanh
- 2,4m para os tamanh



IDD20

Ins
Sem
CaL

2-3



Fre

IDD20

e largura
uidos tais como
, linho misto,

Ir
Se
Co

3-3

m

6-64cm/38-66cm

2cm/46-76cm/48-78cm

4cm

os 36-38

os 40-42

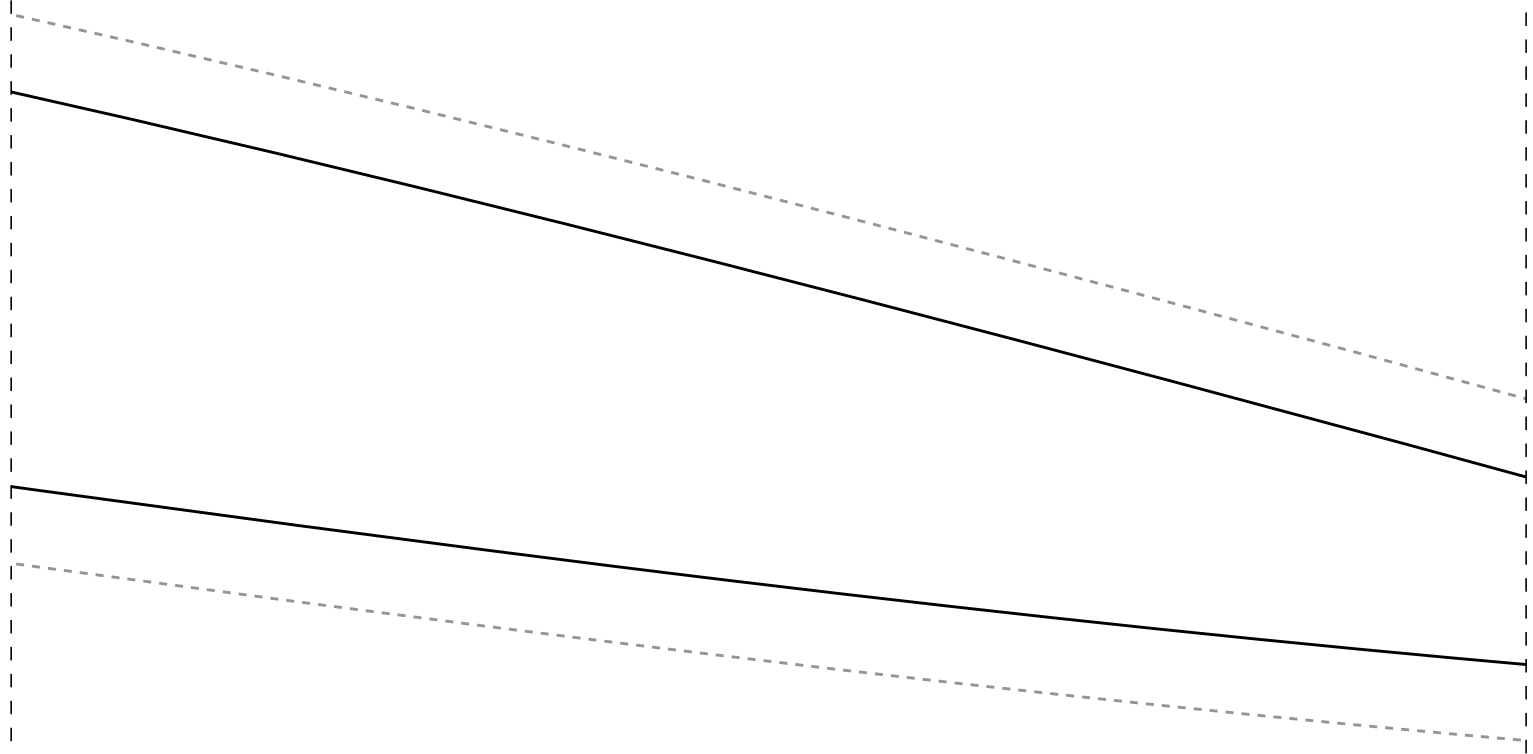
44-46

os 48-50

os 52-54

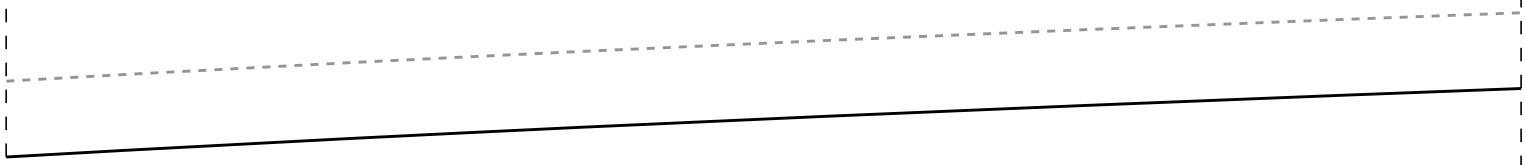
Costas 2x-36

Instituto Diana Demarchi
Diana CMC
Costa com Elástico na Cintura



ente 2x-36

Instituto Diana Demarchi
semana CMC
alça com Elástico na Cin

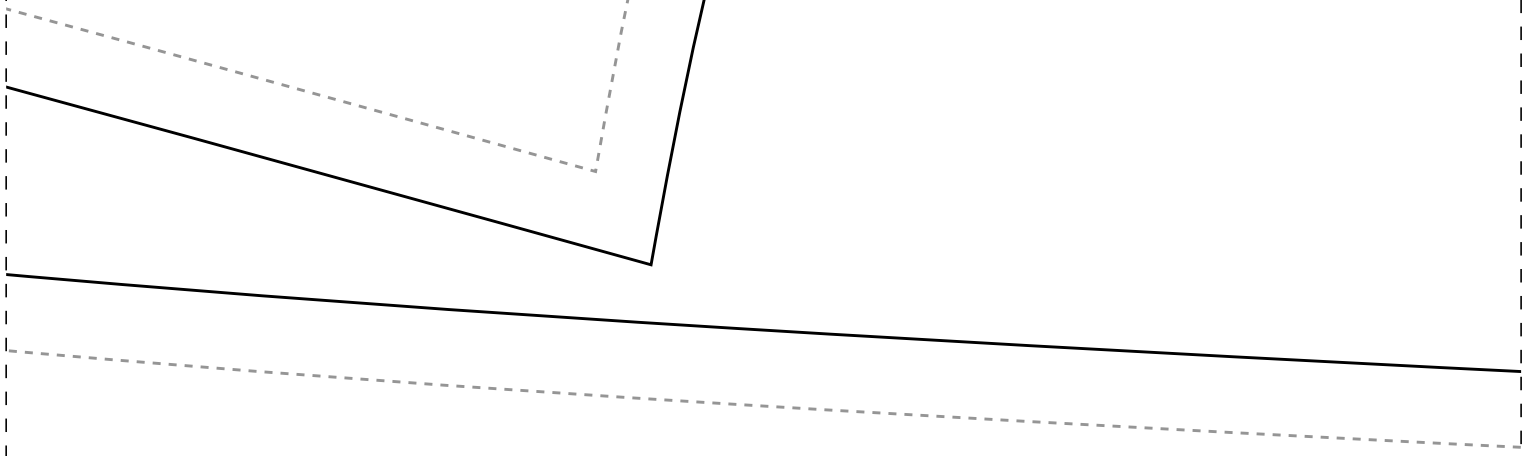


1-5

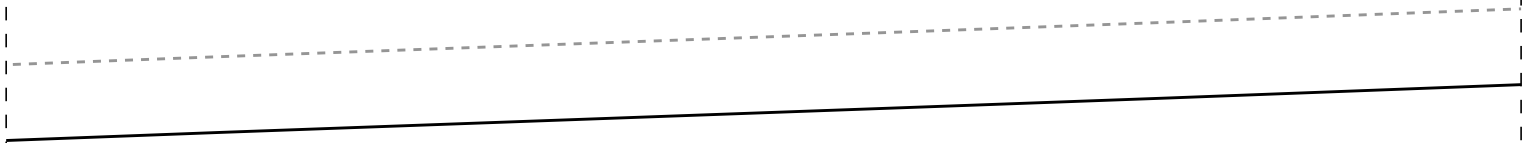


ara

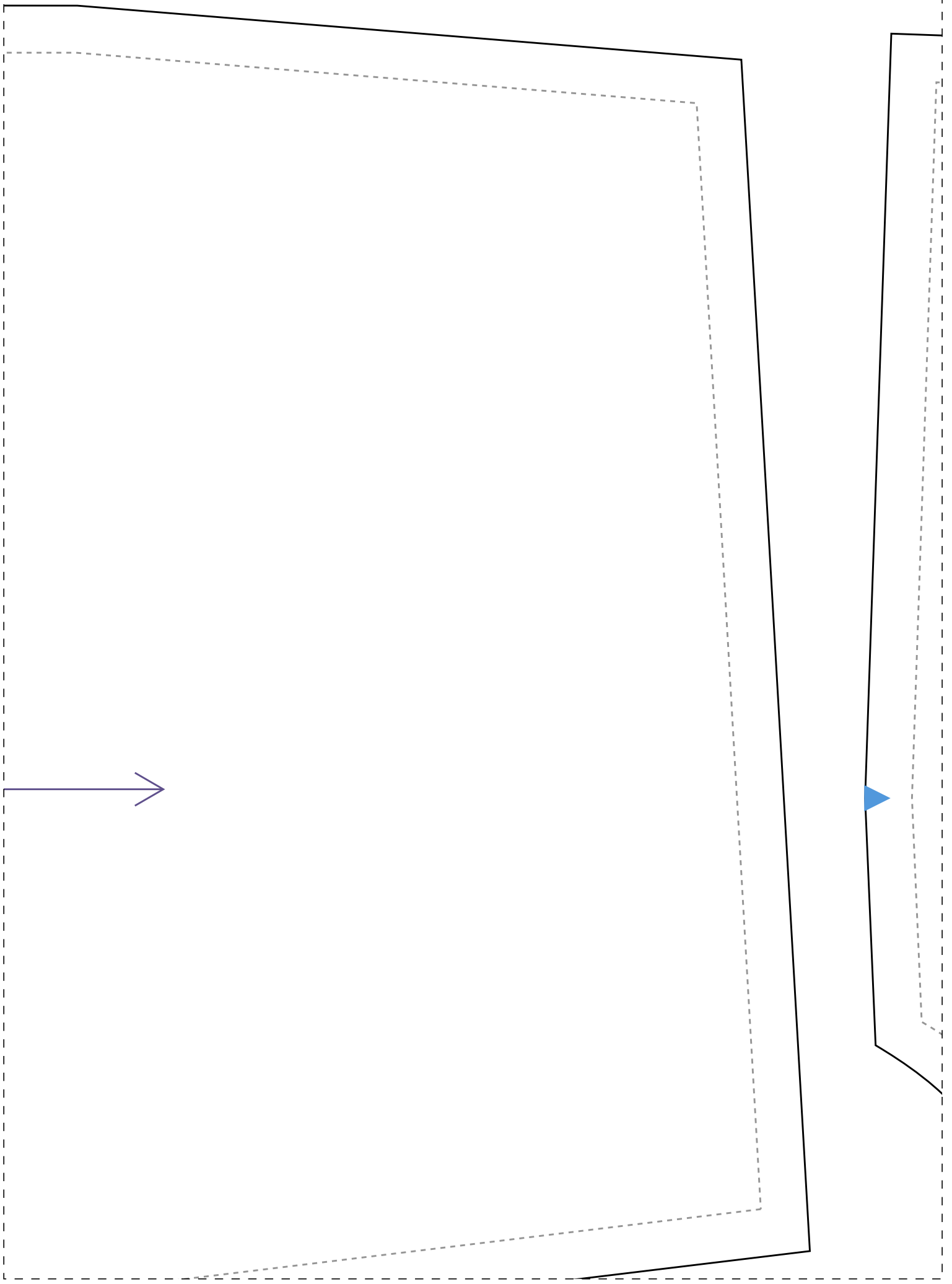
2-5



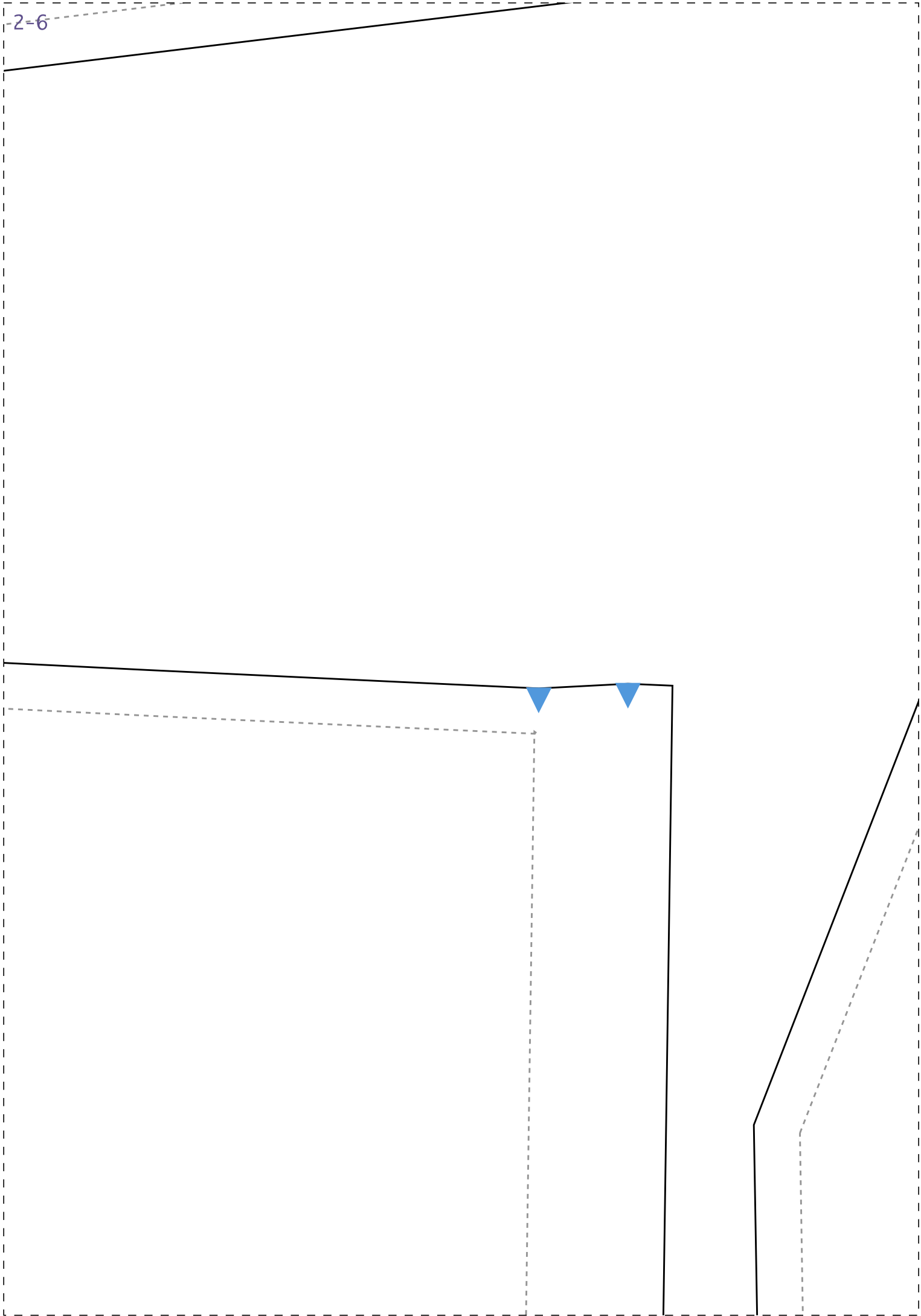
tura



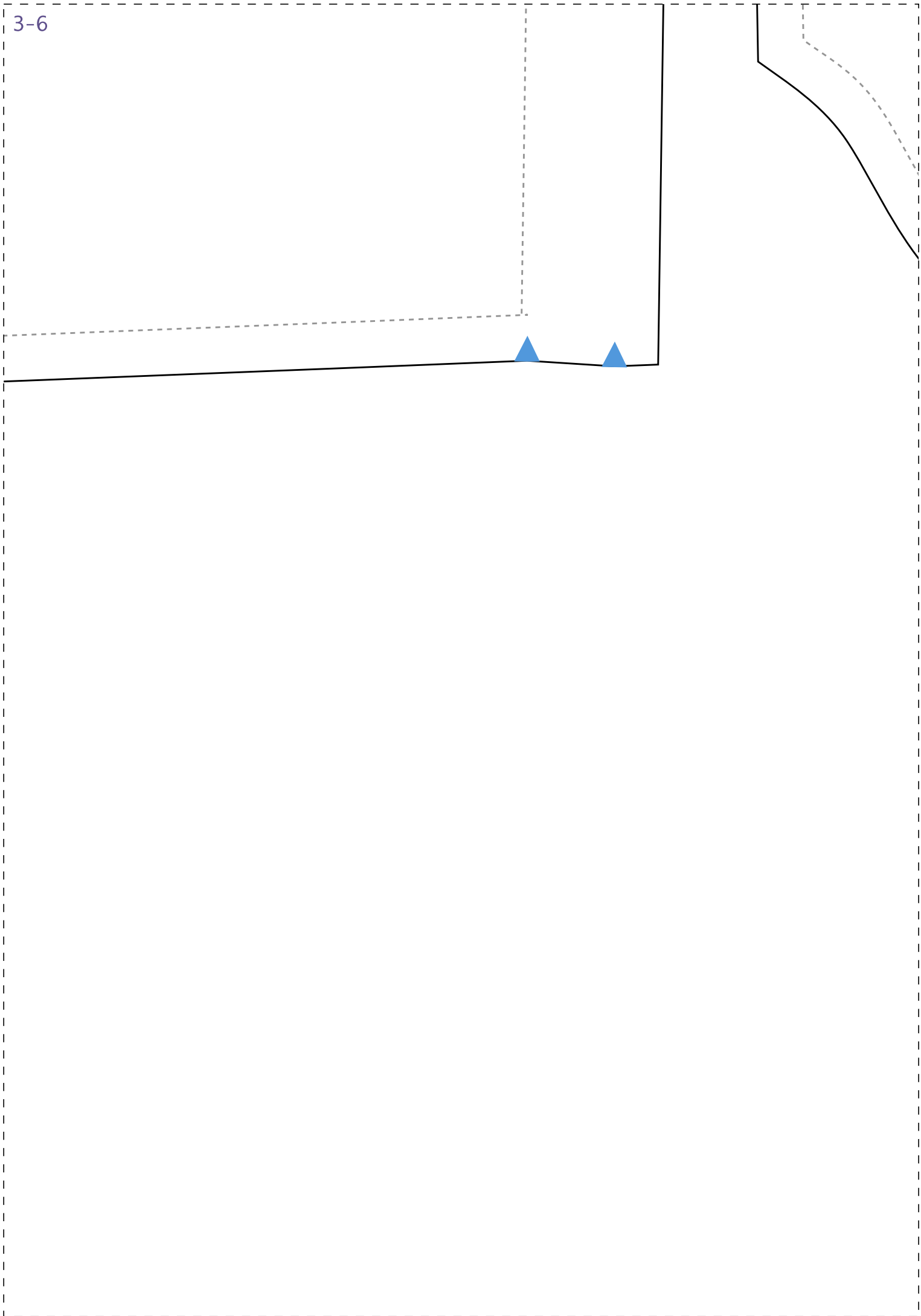
1-6



2-6



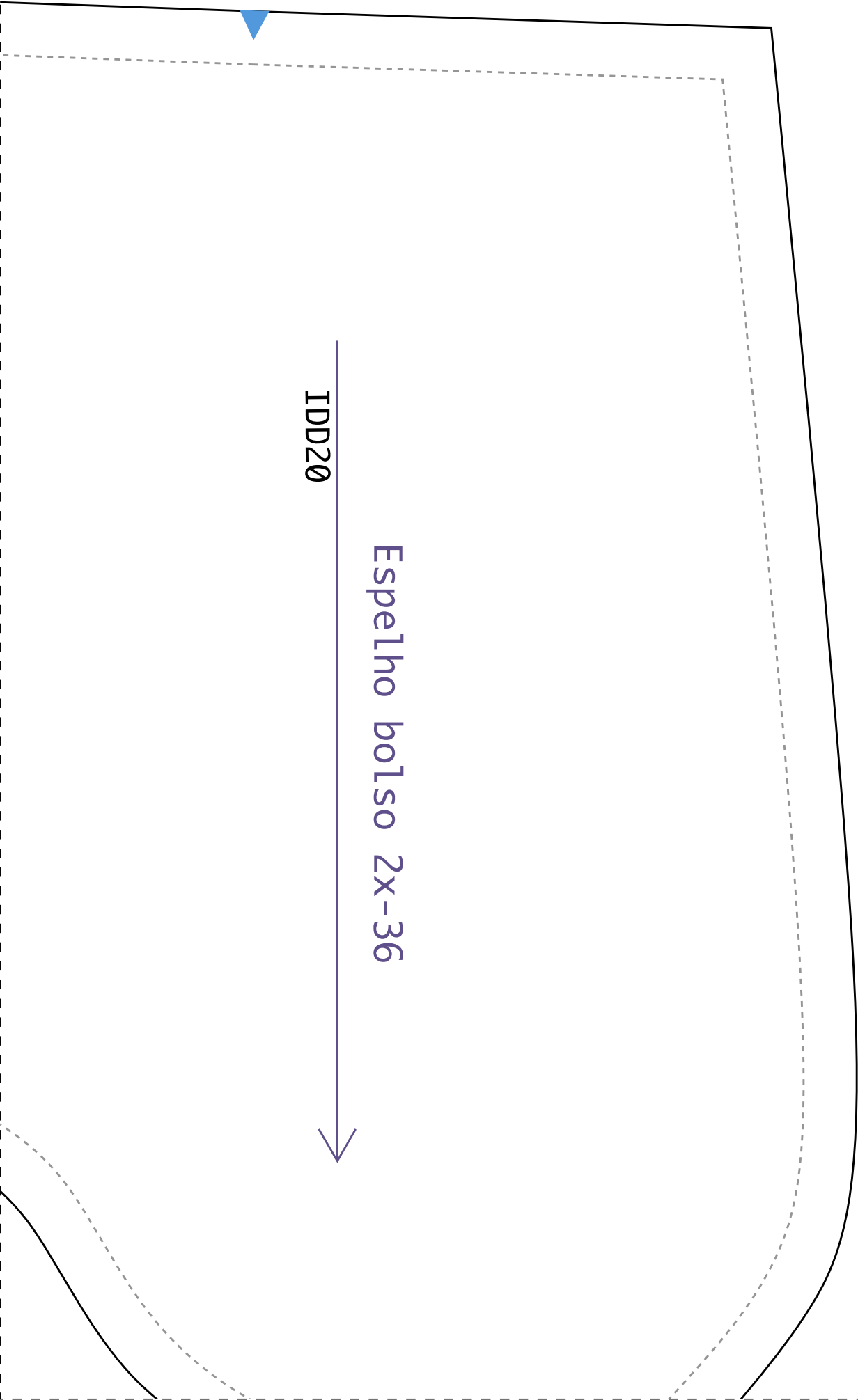
3-6

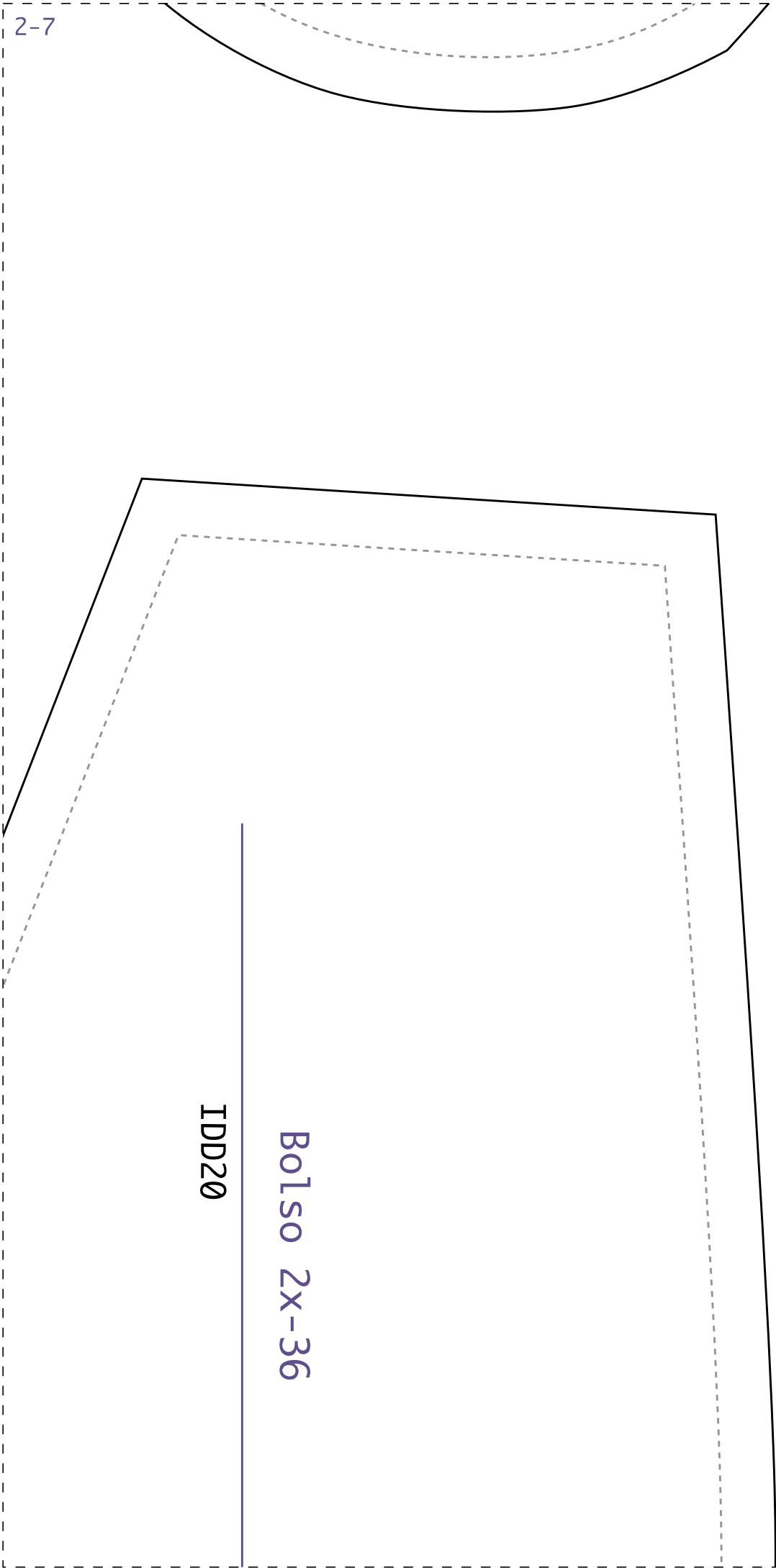


1-7

IDD20

Espelho bolso 2x-36





IDDD20

Bols0 2X-36

3-7

