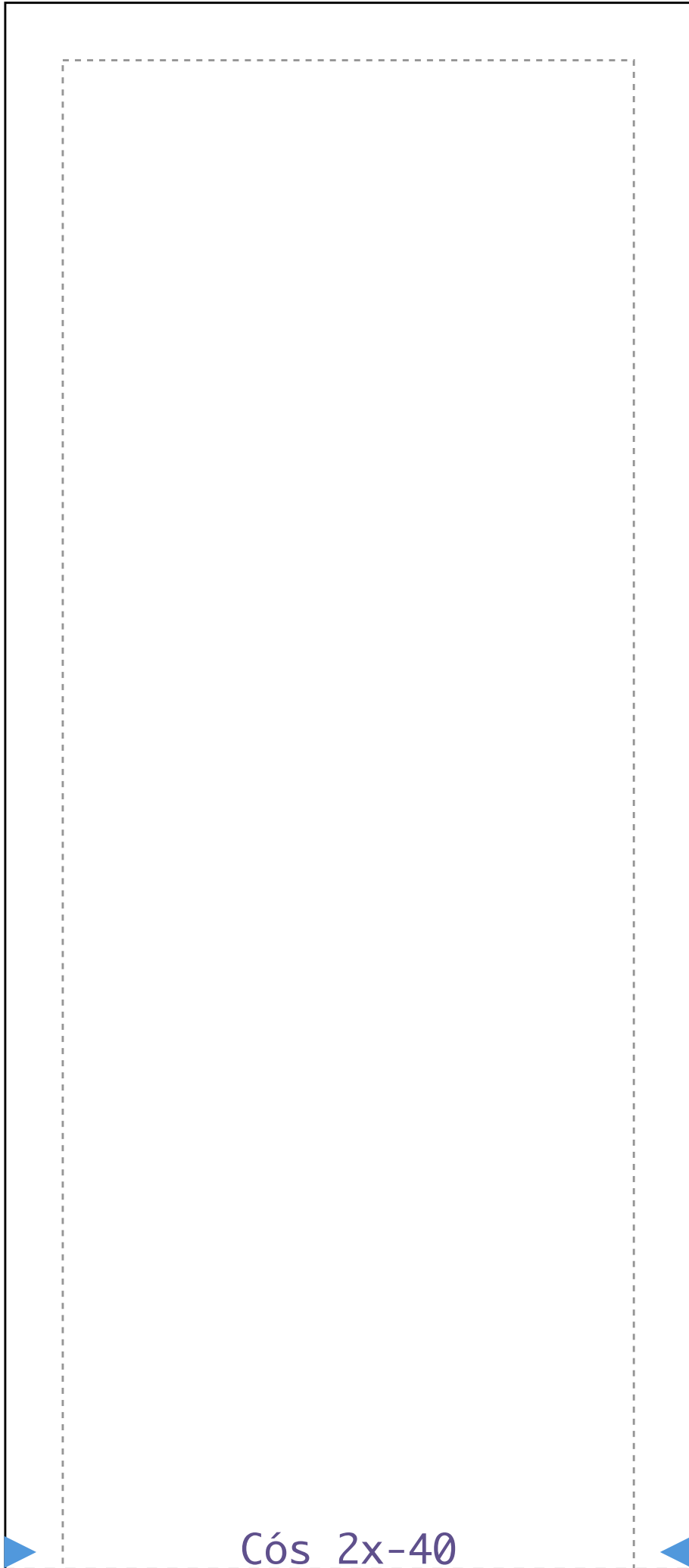


1-1

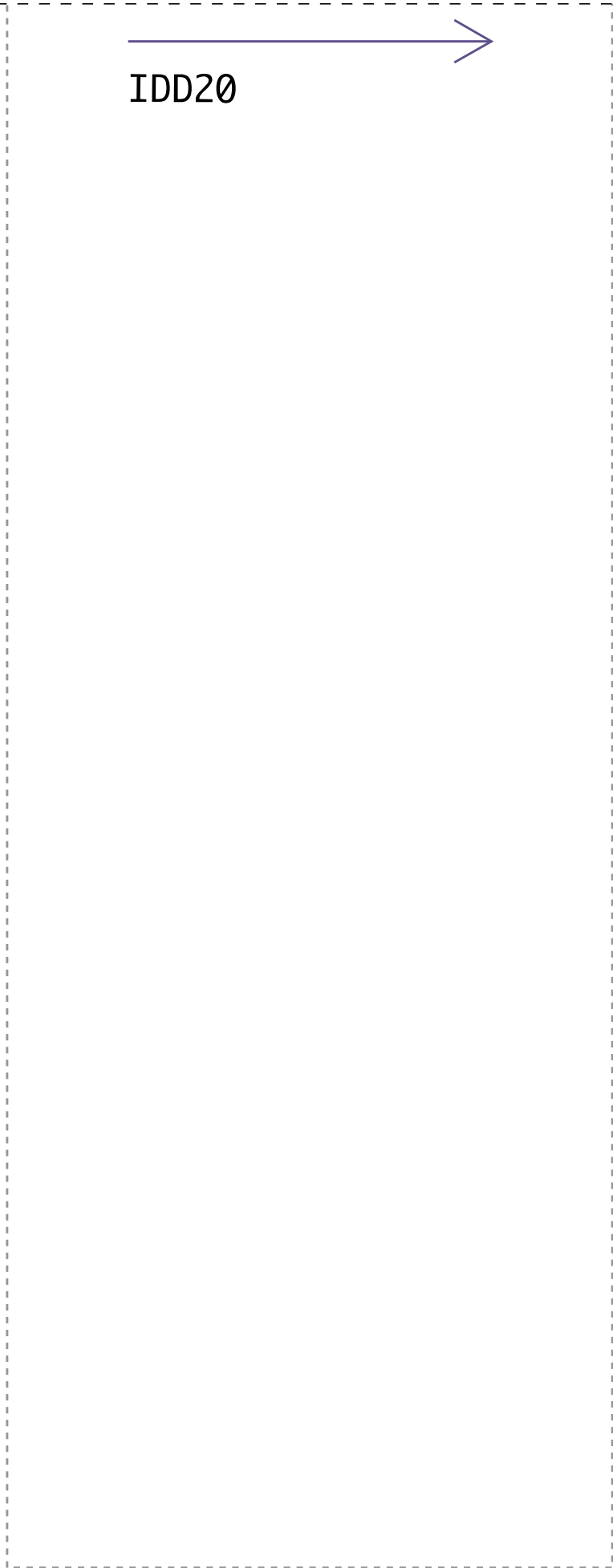
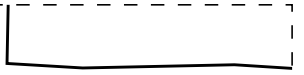


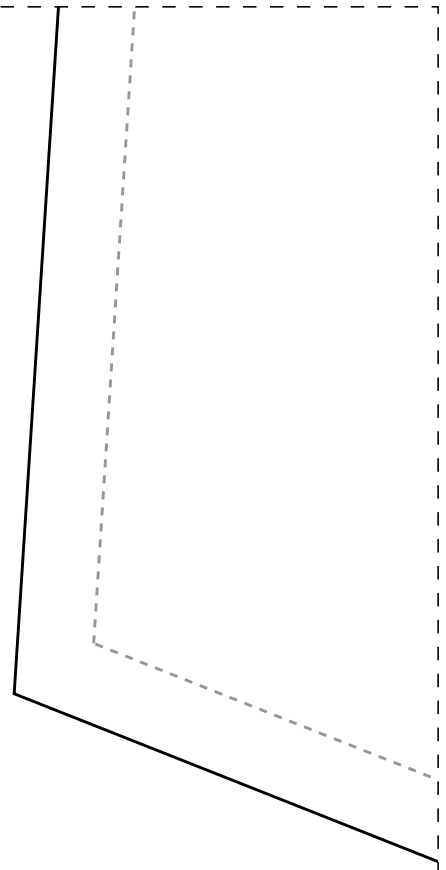
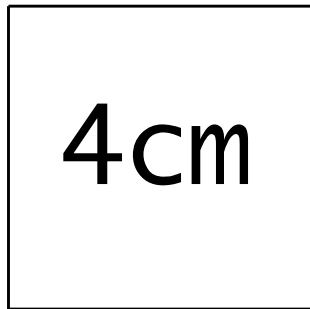
Cós 2x-40

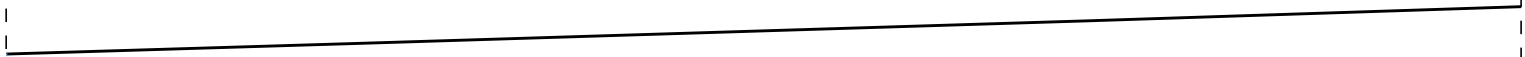


2-1

IDD20







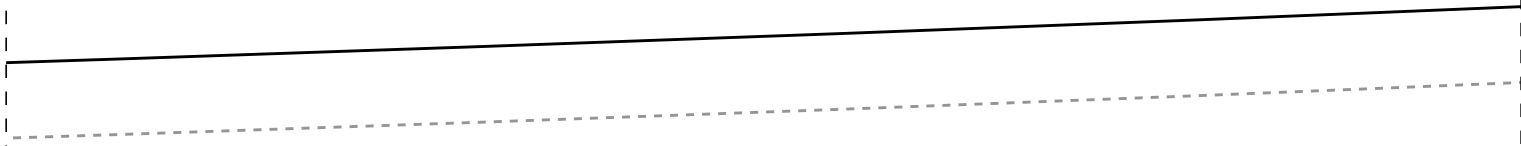
2-2



I

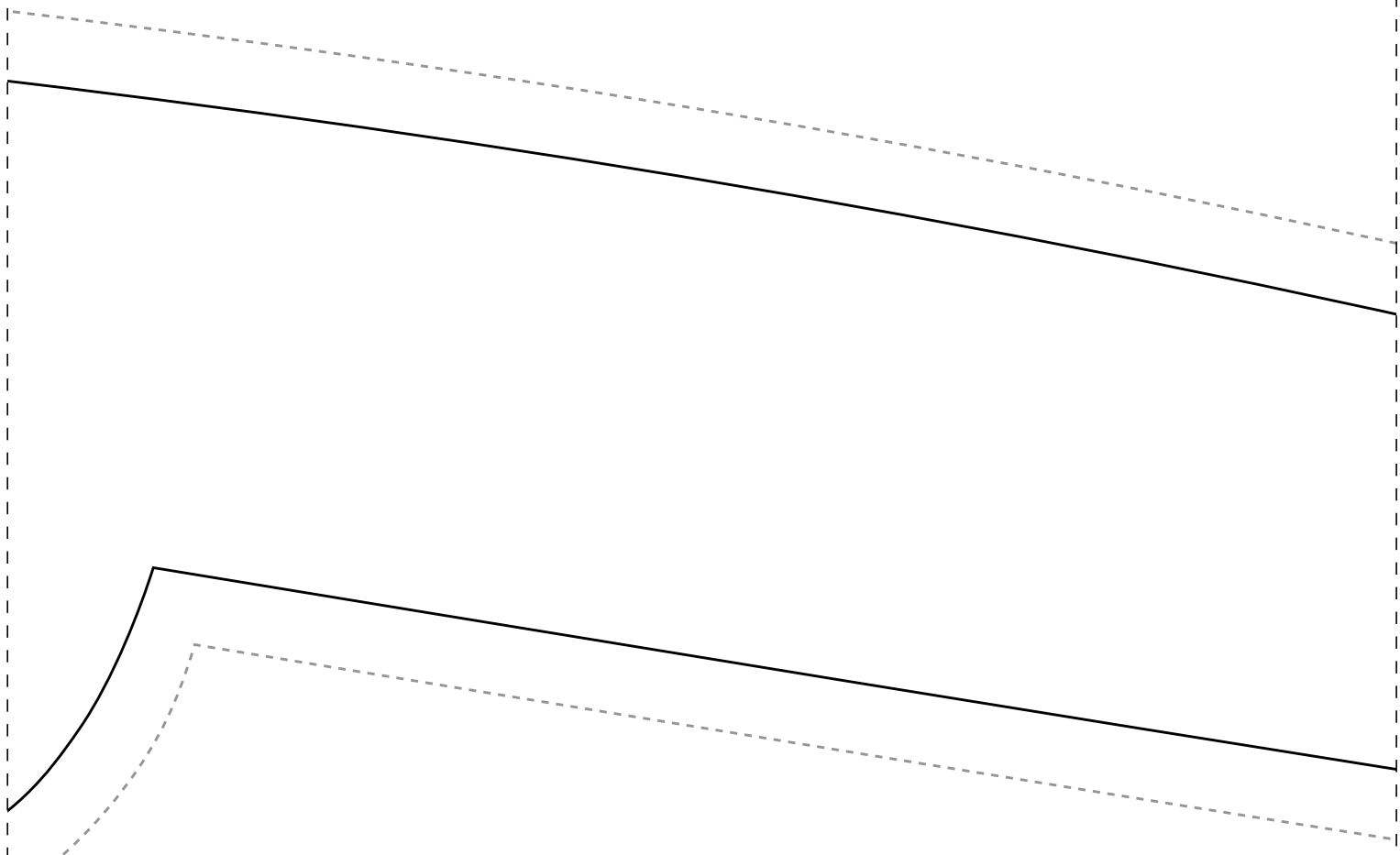
Ficha:

- Tecido plano 1,4m de
- Indicado tecidos flu
viscose, viscolinho,
chambray, etc
- Barra com bainha 3cm
- Medidas Elástico: 30
40-68cm/42-70cm/44-72
50-80cm/52-82cm/54-84
- 1,6m para os tamanho
- 1,8m para os tamanho
- 2m para os tamanhos
- 2,1m para os tamanho
- 2,4m para os tamanho



IDD20

2-3



Fre

DD20

e largura
vidos tais como
, linho misto,

n
5-64cm/38-66cm
2cm/46-76cm/48-78cm

4cm

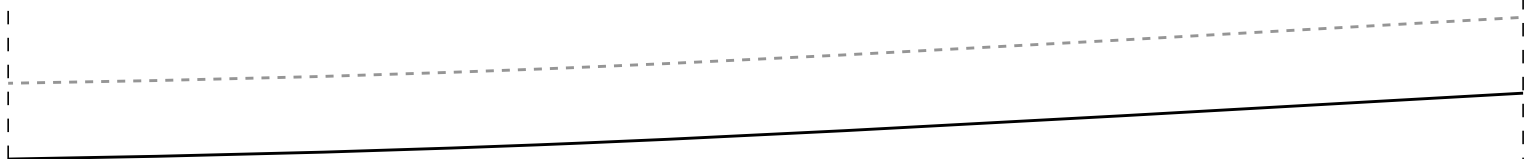
os 36-38

os 40-42

44-46

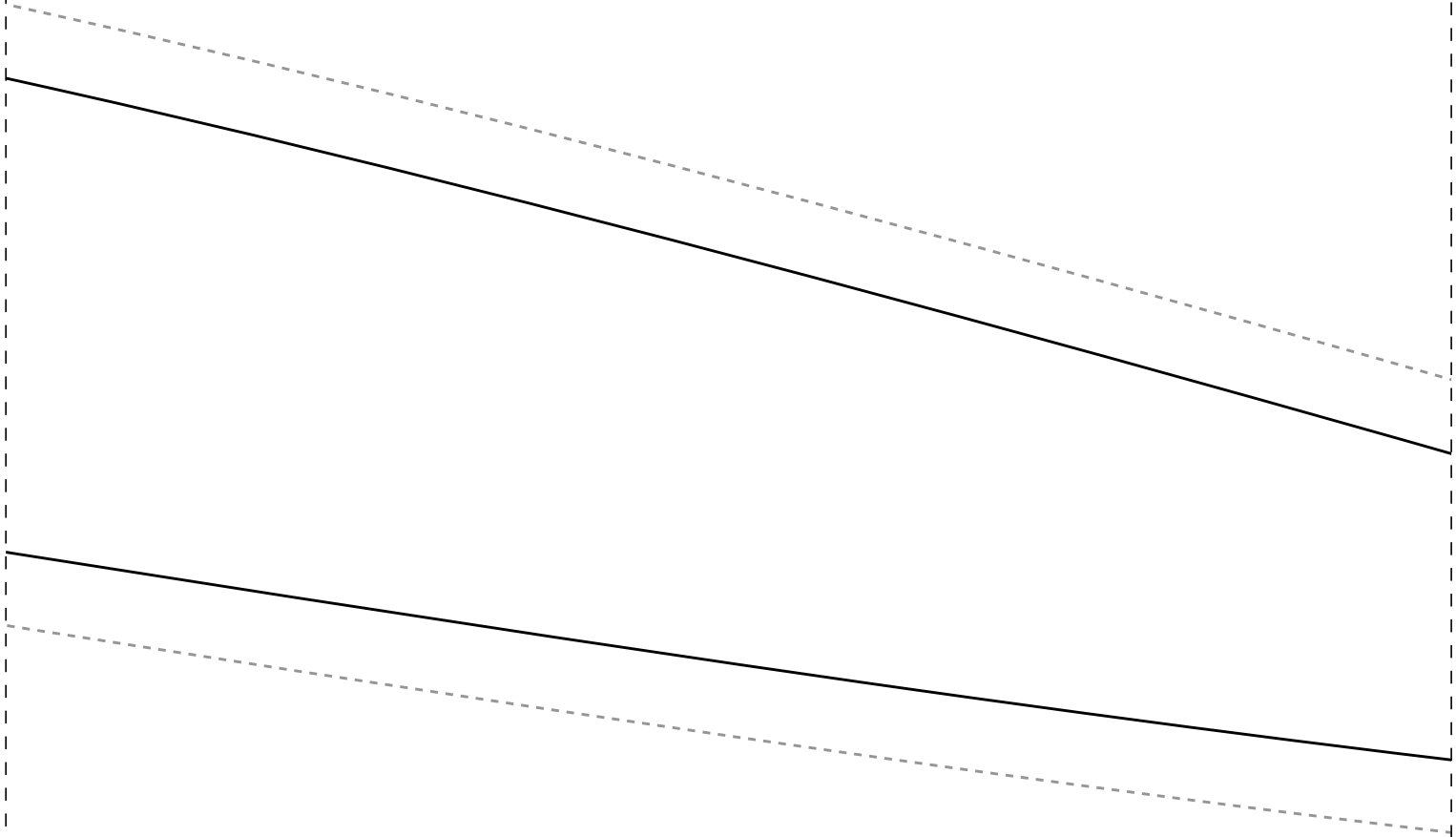
os 48-50

os 52-54



Instituto Diana Demarchi
Semana CMC
Calça com Elástico na C

Costas 2x-40



ente $2x-40$

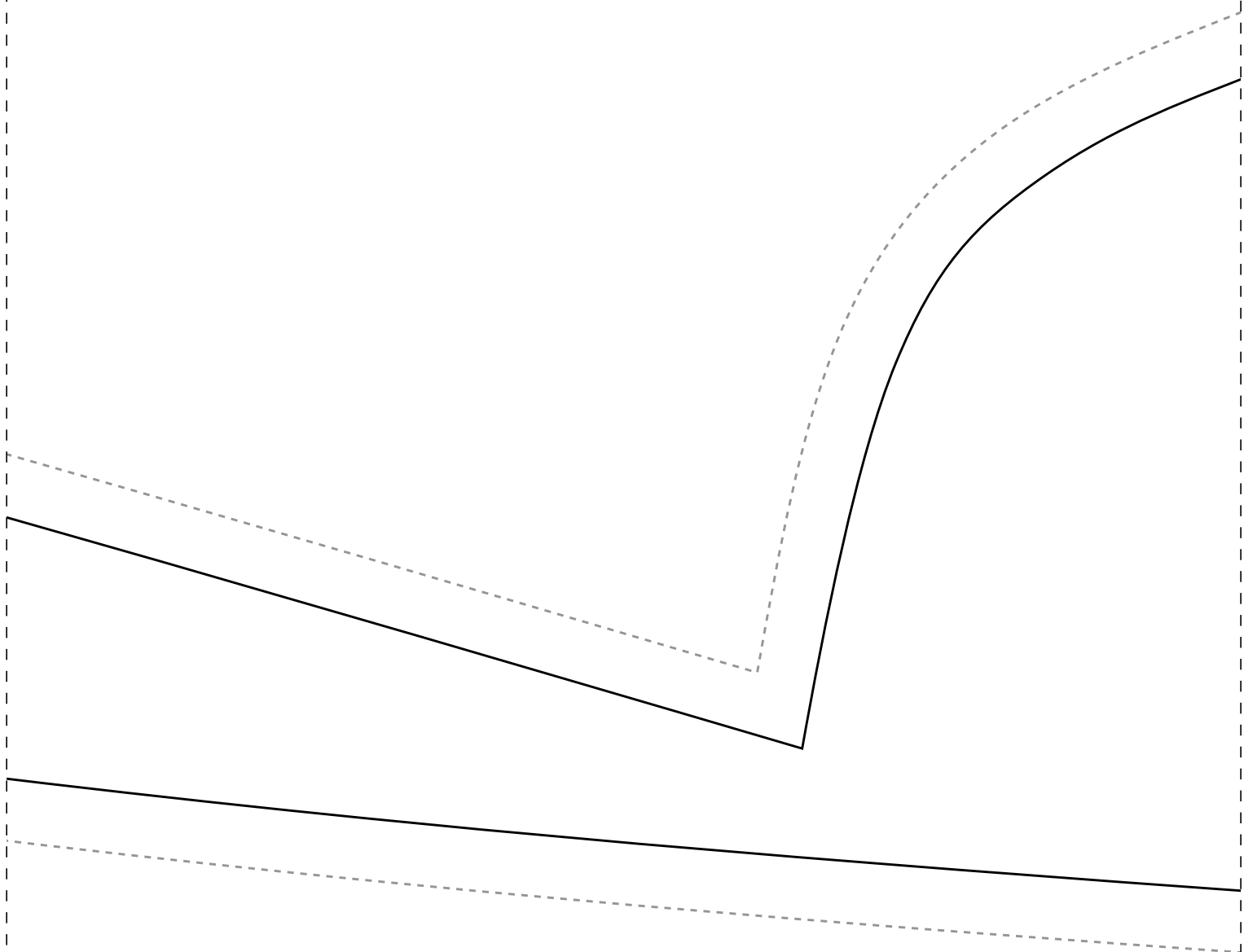
Semana CMC

Calça com Elástico na Ci



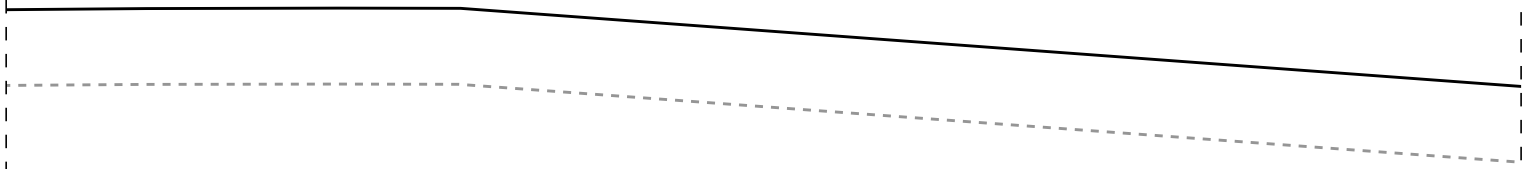
L

Intura

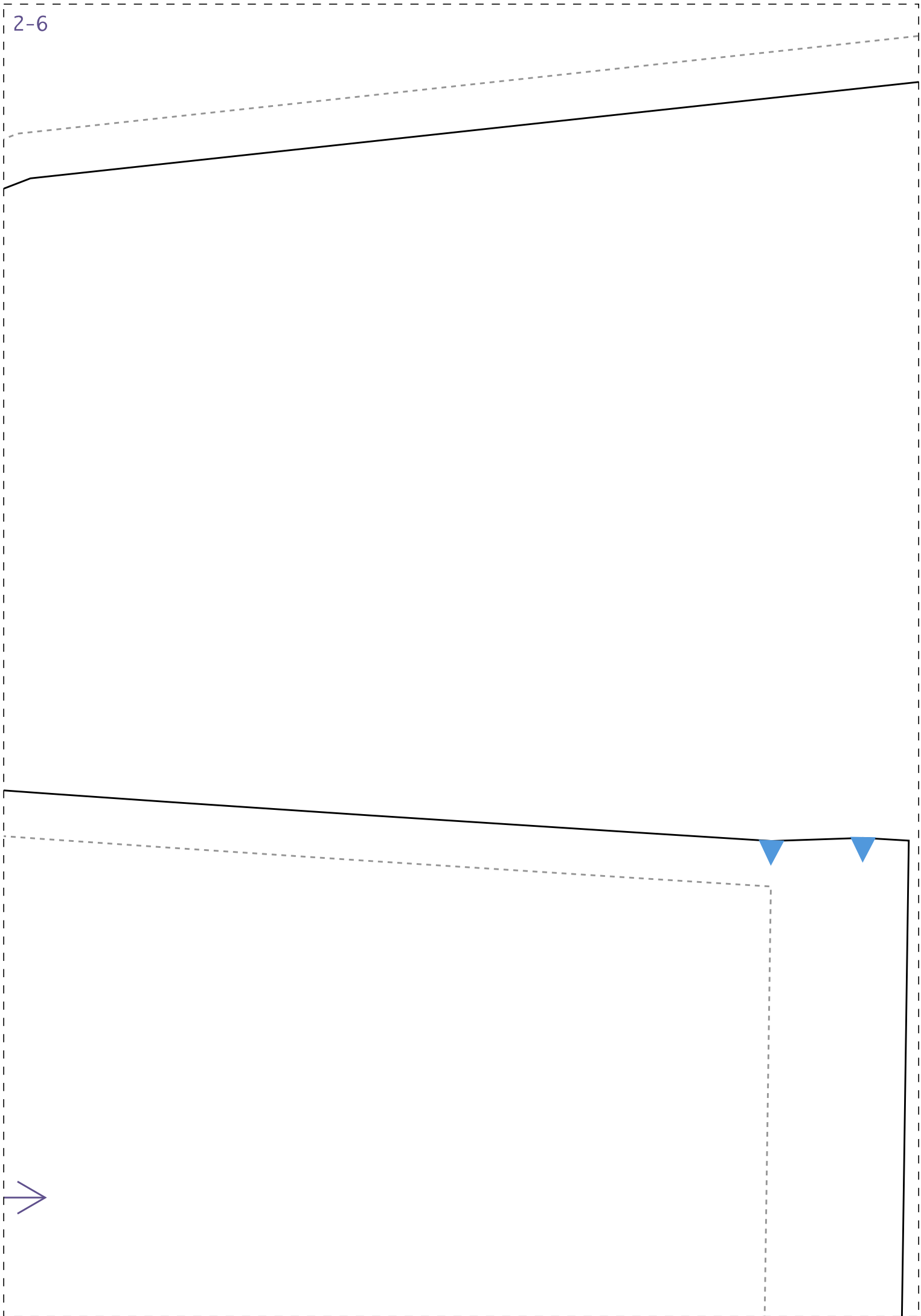


ultura

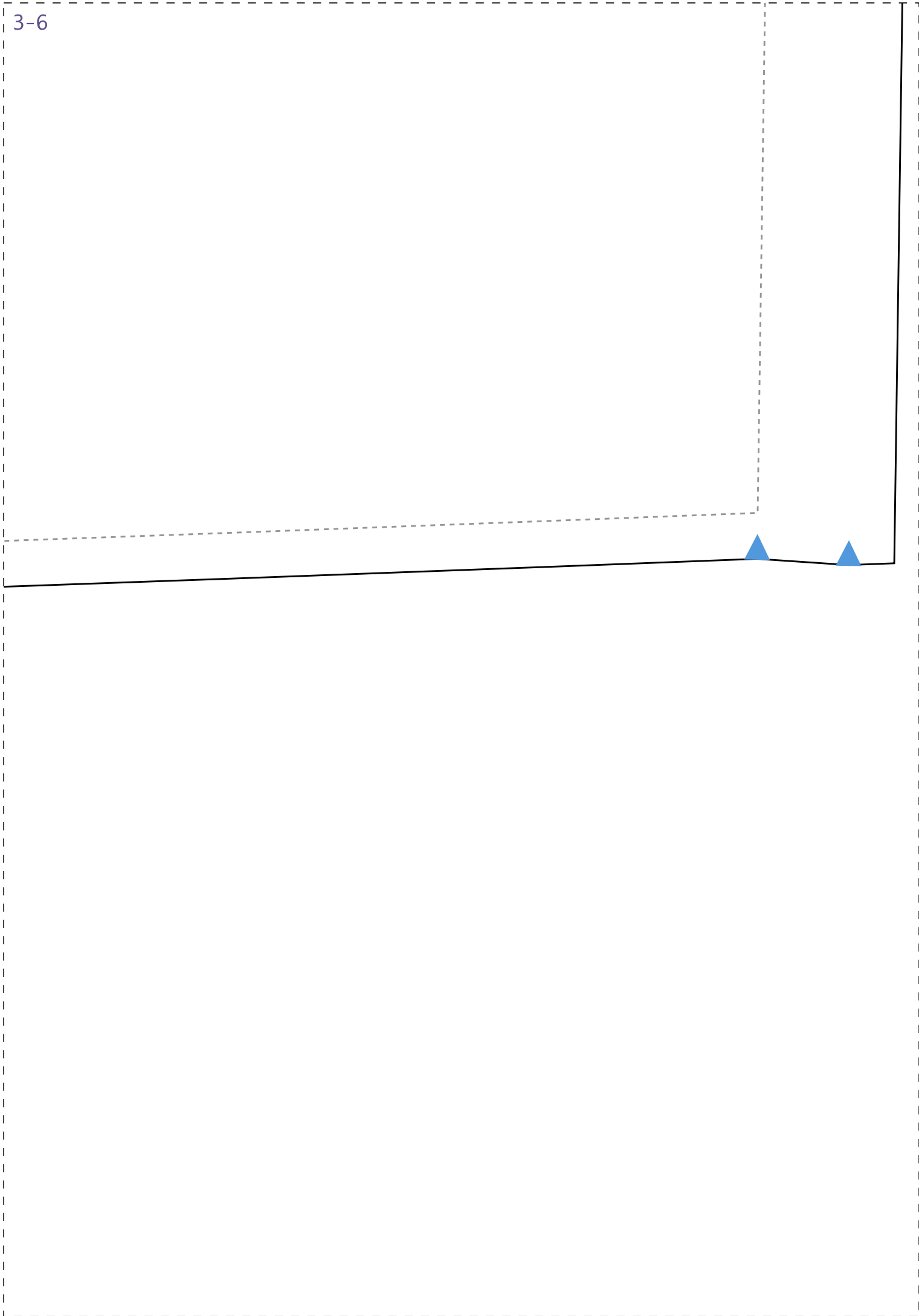
1-6



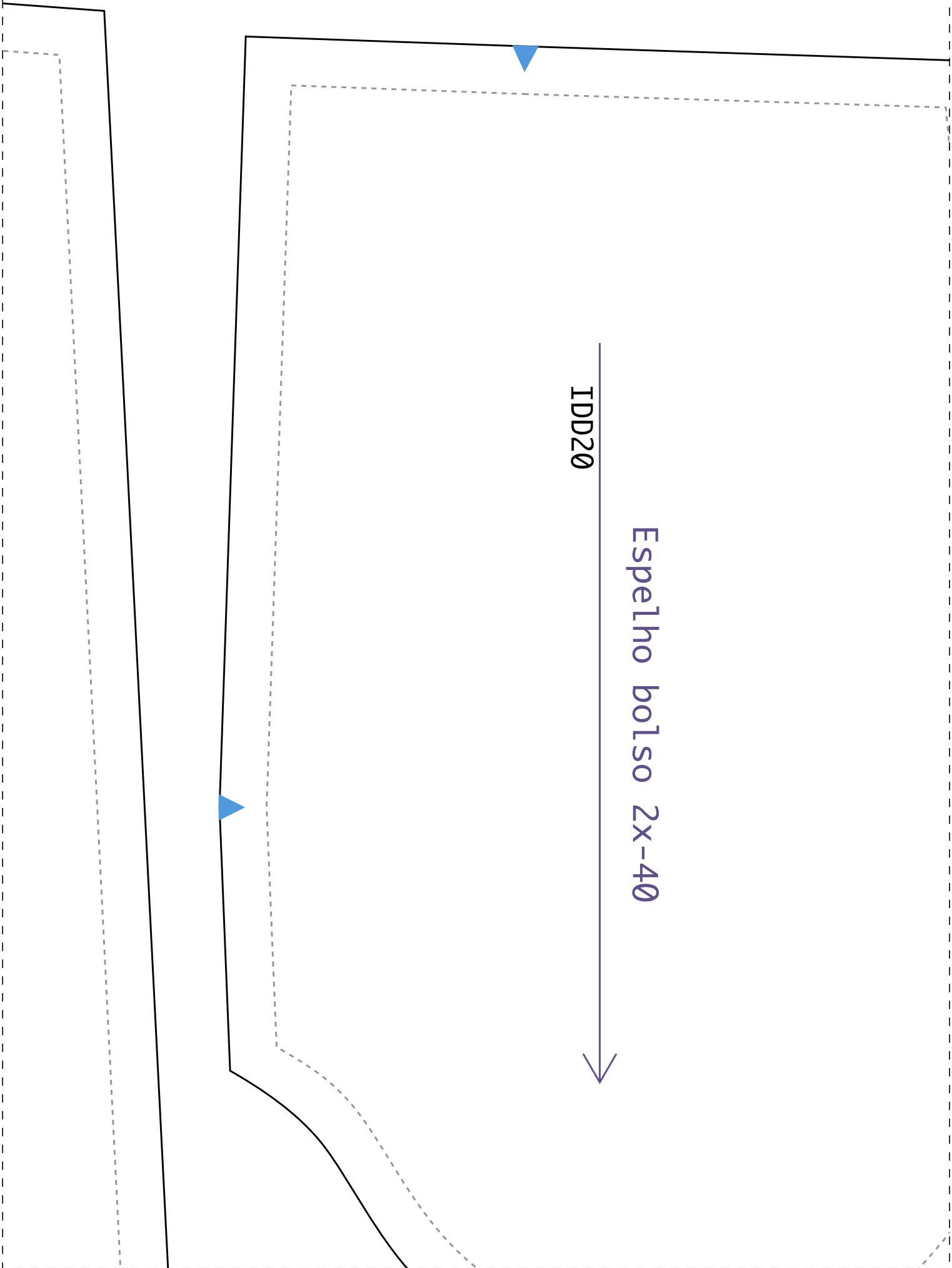
2-6



3-6



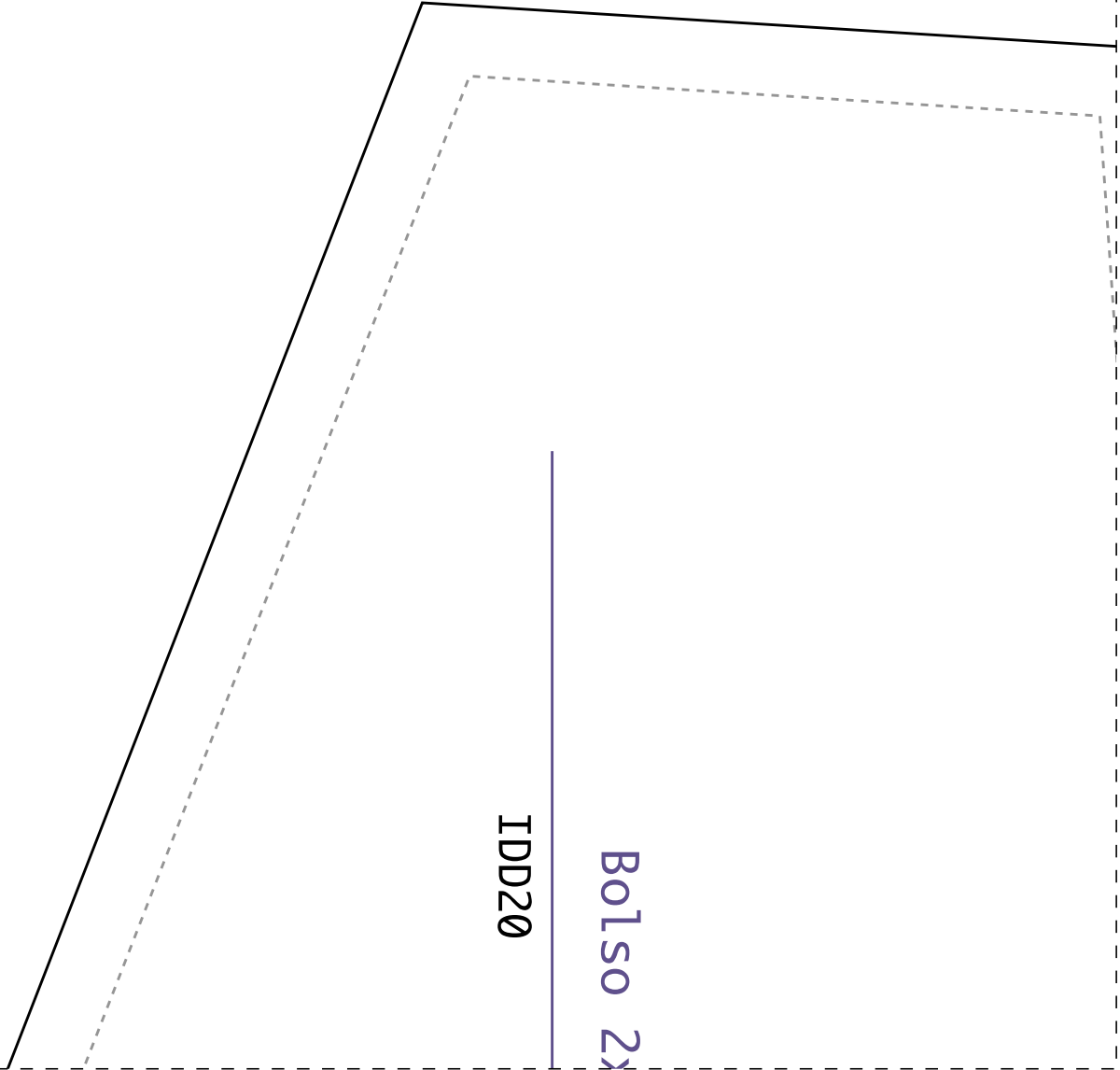
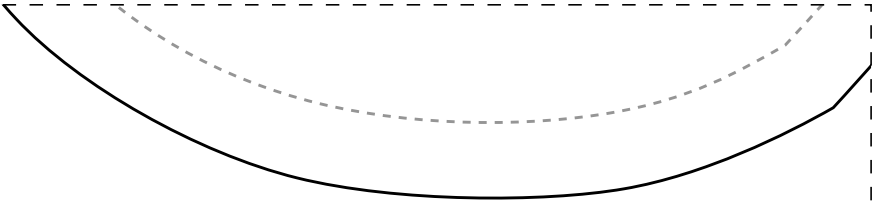
1-7



IDD20

Espelho bolso 2x-40

2-7

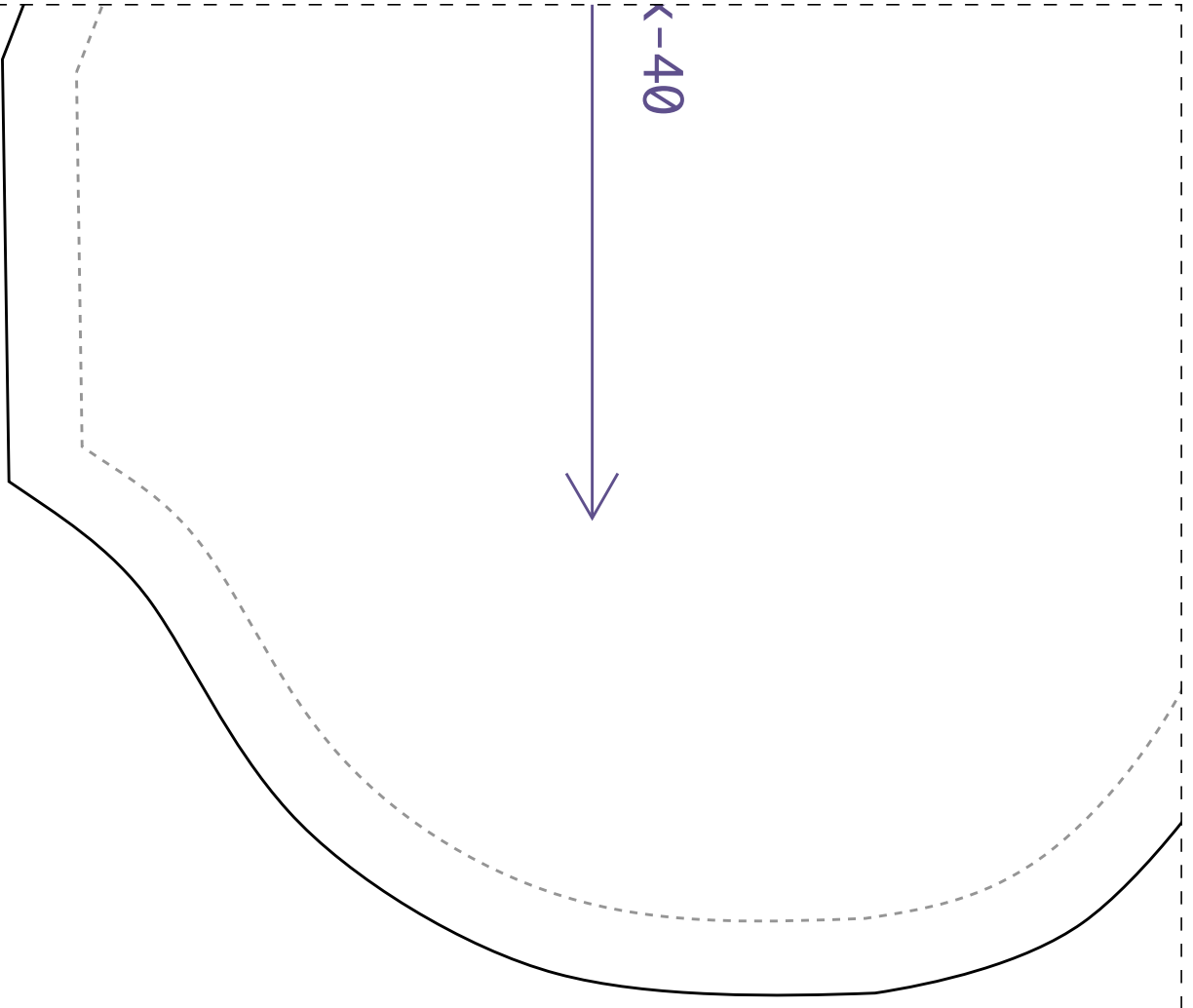


IDD20

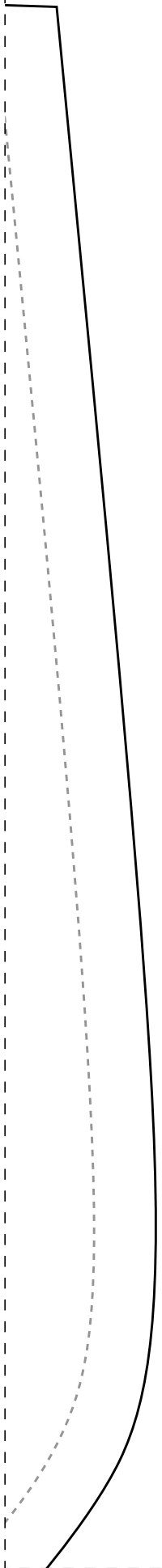
Bols0 2x

3-7

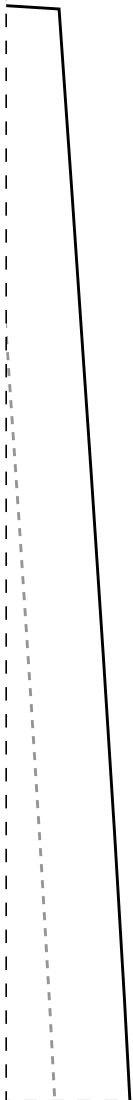
←-40



1-8



2-8



3-8

