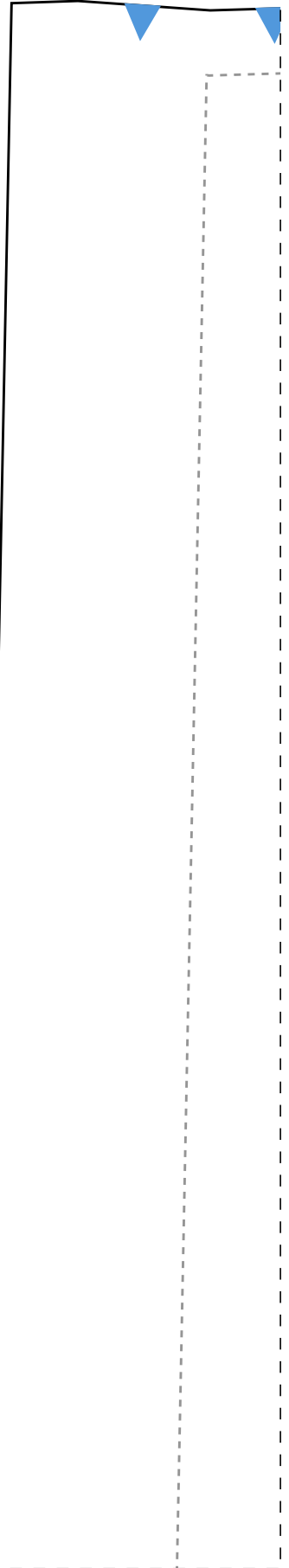


1-1

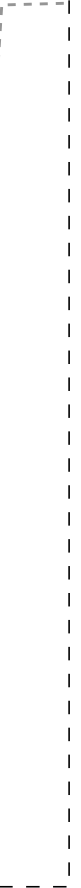
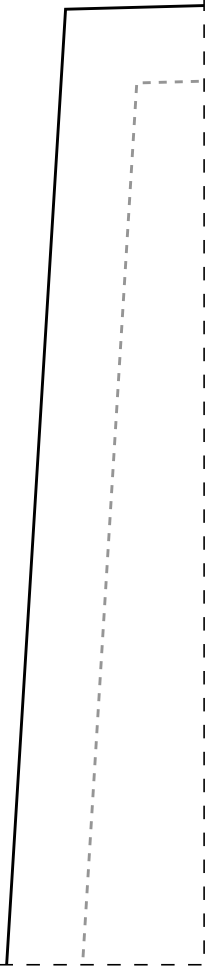


2-1

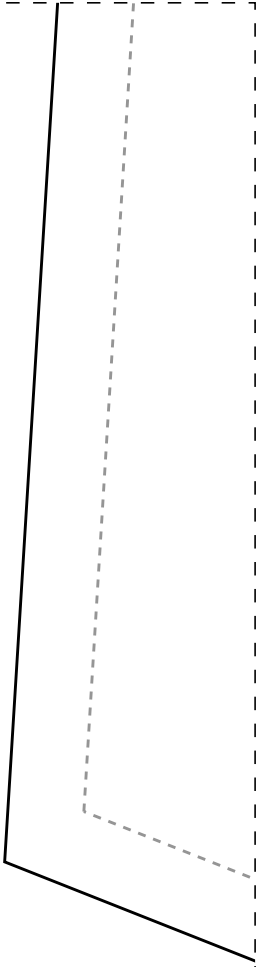
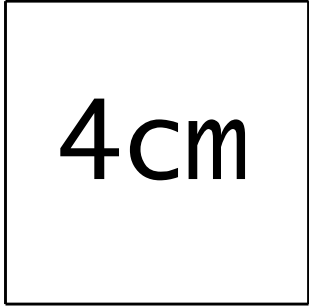
Cós 2x-42



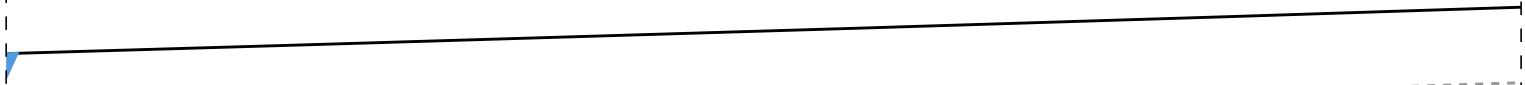
IDD20



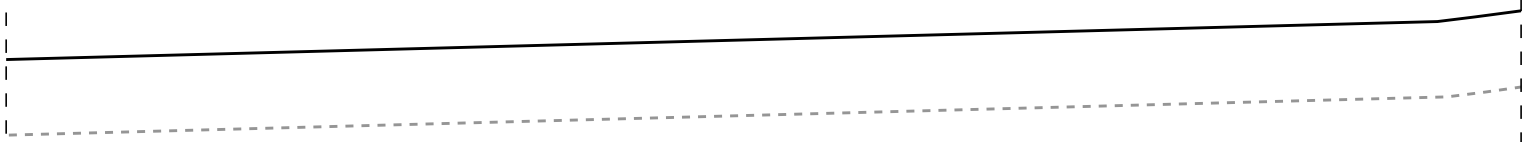
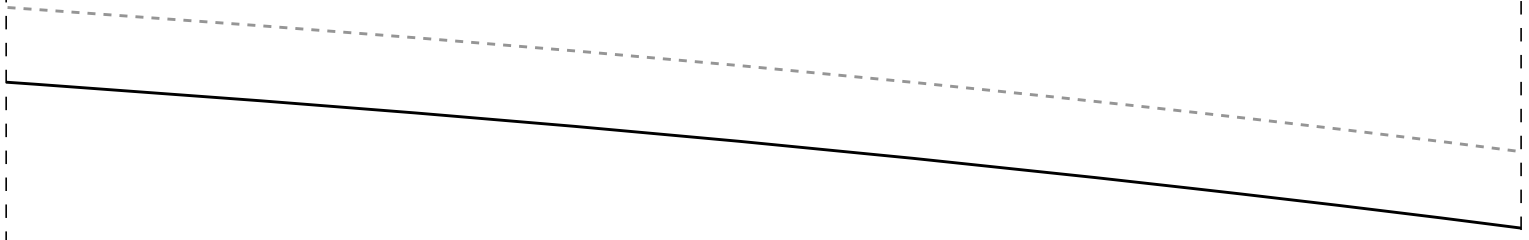
3-1



1-2



2-2



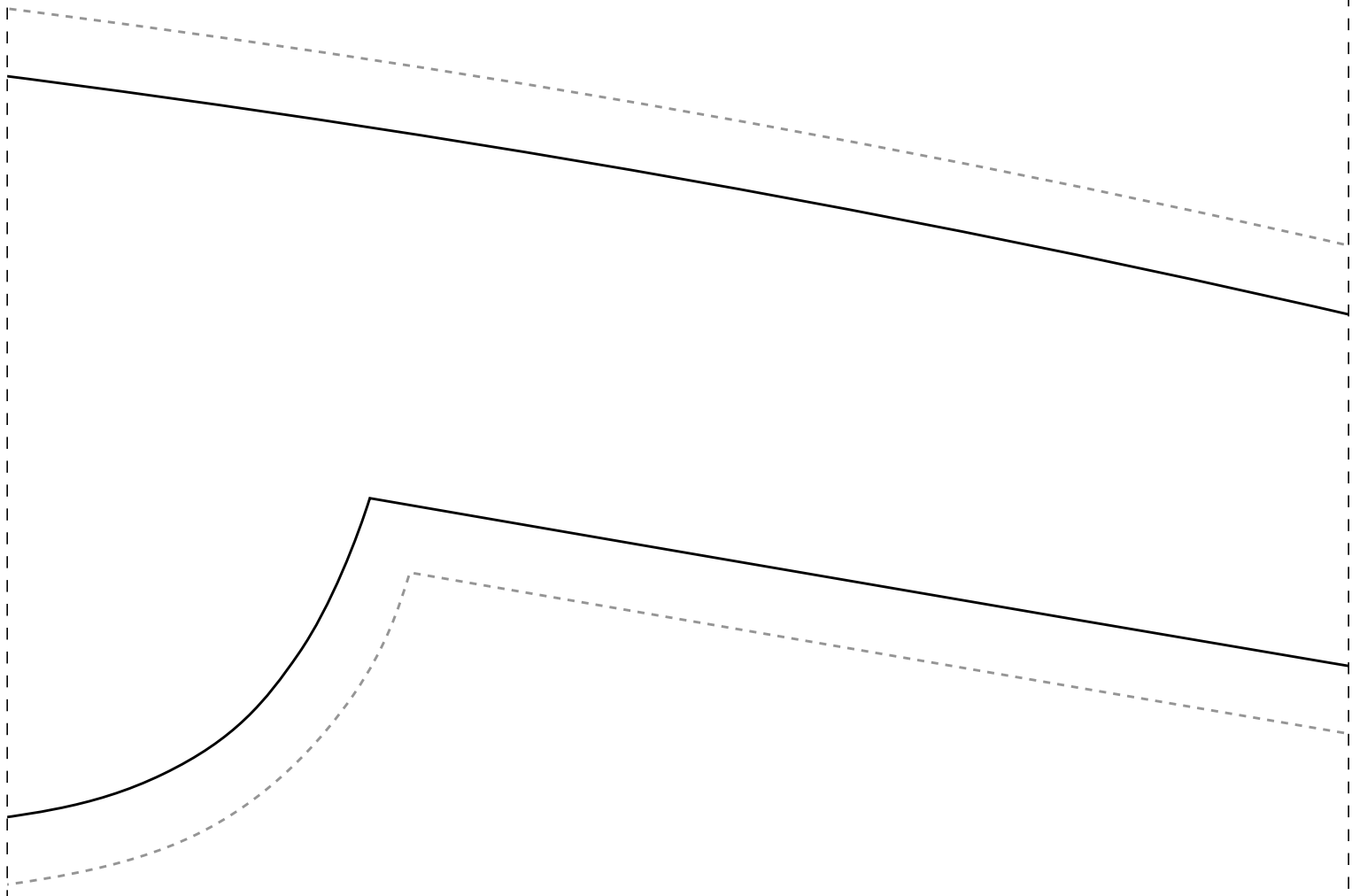
## Ficha:

- Tecido plano
- Indicado tec  
viscose, vis  
chambray, et
- Barra com ba
- Medidas Elás
- 40-68cm/42-70
- 50-80cm/52-82
- 1,6m para os
- 1,8m para os
- 2m para os t
- 2,1m para os
- 2,4m para os

1-3

---

IDD20





## IDD20

1,4m de largura  
idos fluidos tais como  
colinho, linho misto,

C

inha 3cm

tico: 36-64cm/38-66cm

cm/44-72cm/46-76cm/48-78cm

cm/54-84cm

tamanhos 36-38

tamanhos 40-42

tamanhos 44-46

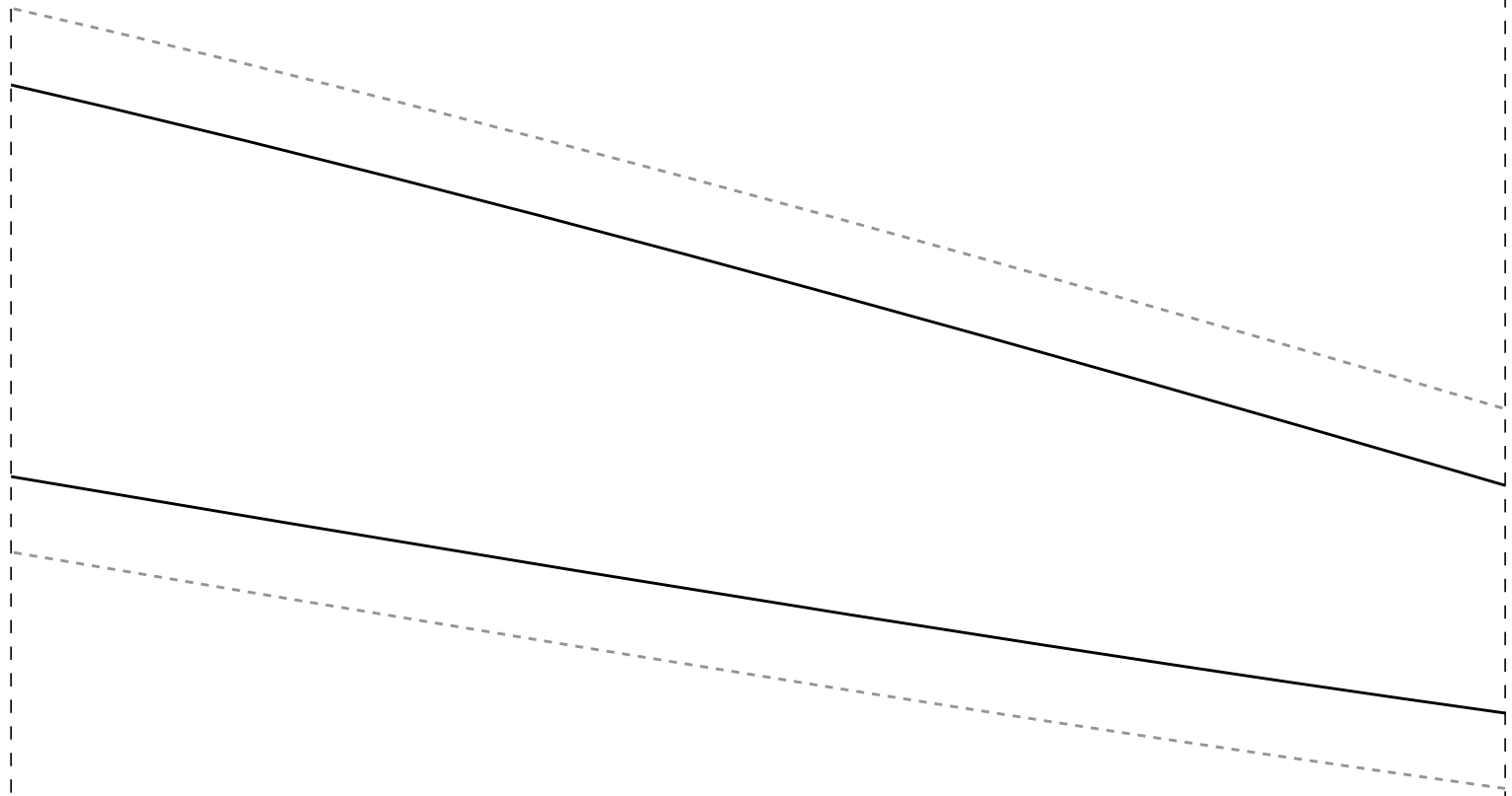
tamanhos 48-50

tamanhos 52-54

Instituto Diana Dema  
Semana CMC  
Calça com Elástico n

Costas 2x-42

2-4

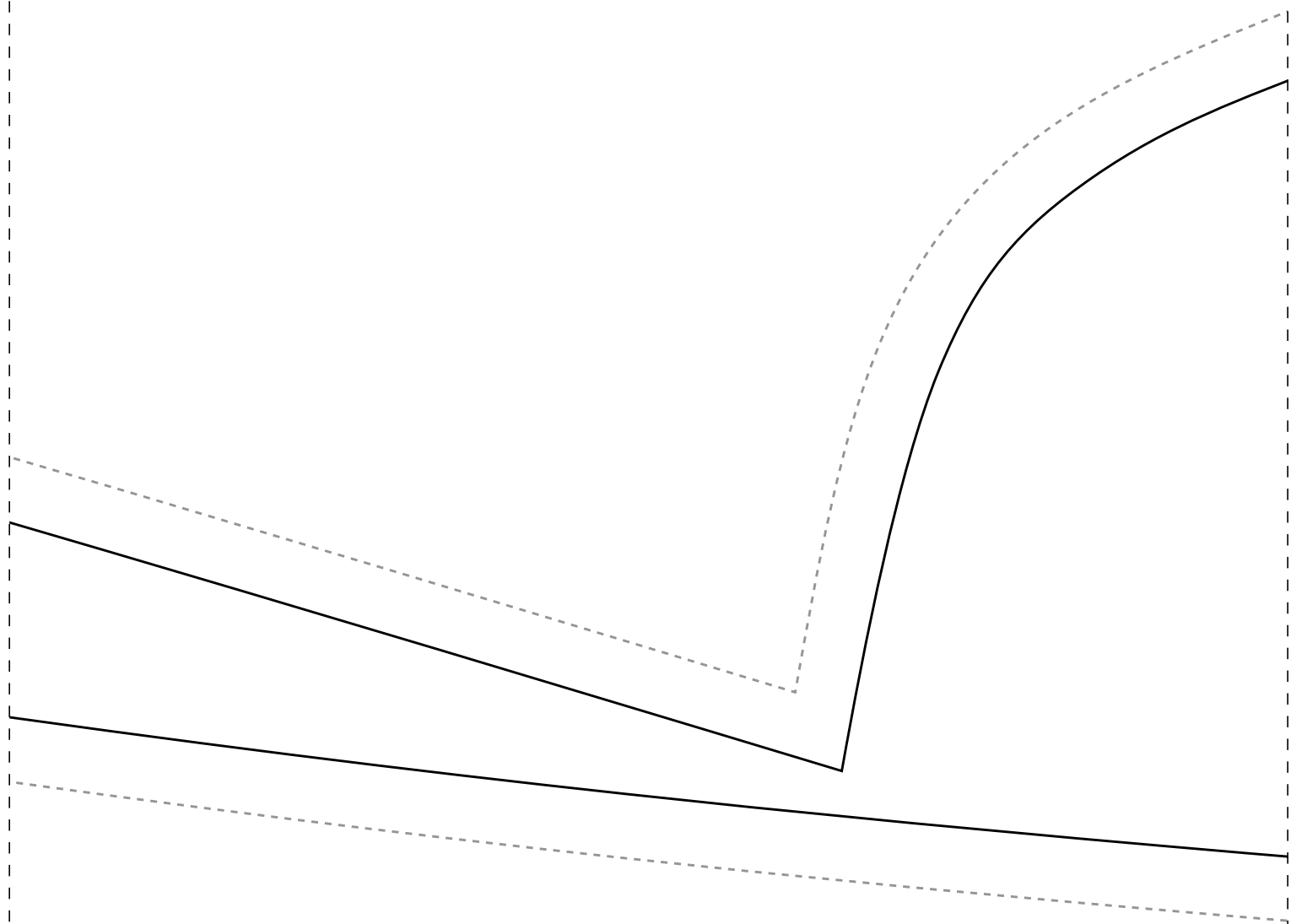


rente  $2x-42$

Instituto Diana Demarc  
Semana CMC  
Calça com Elástico na

rchi

a Cintura

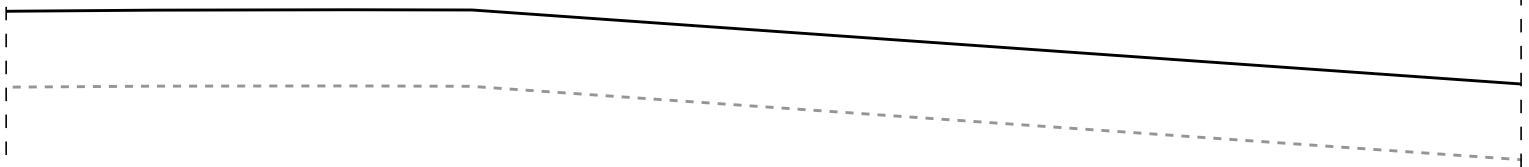


hi

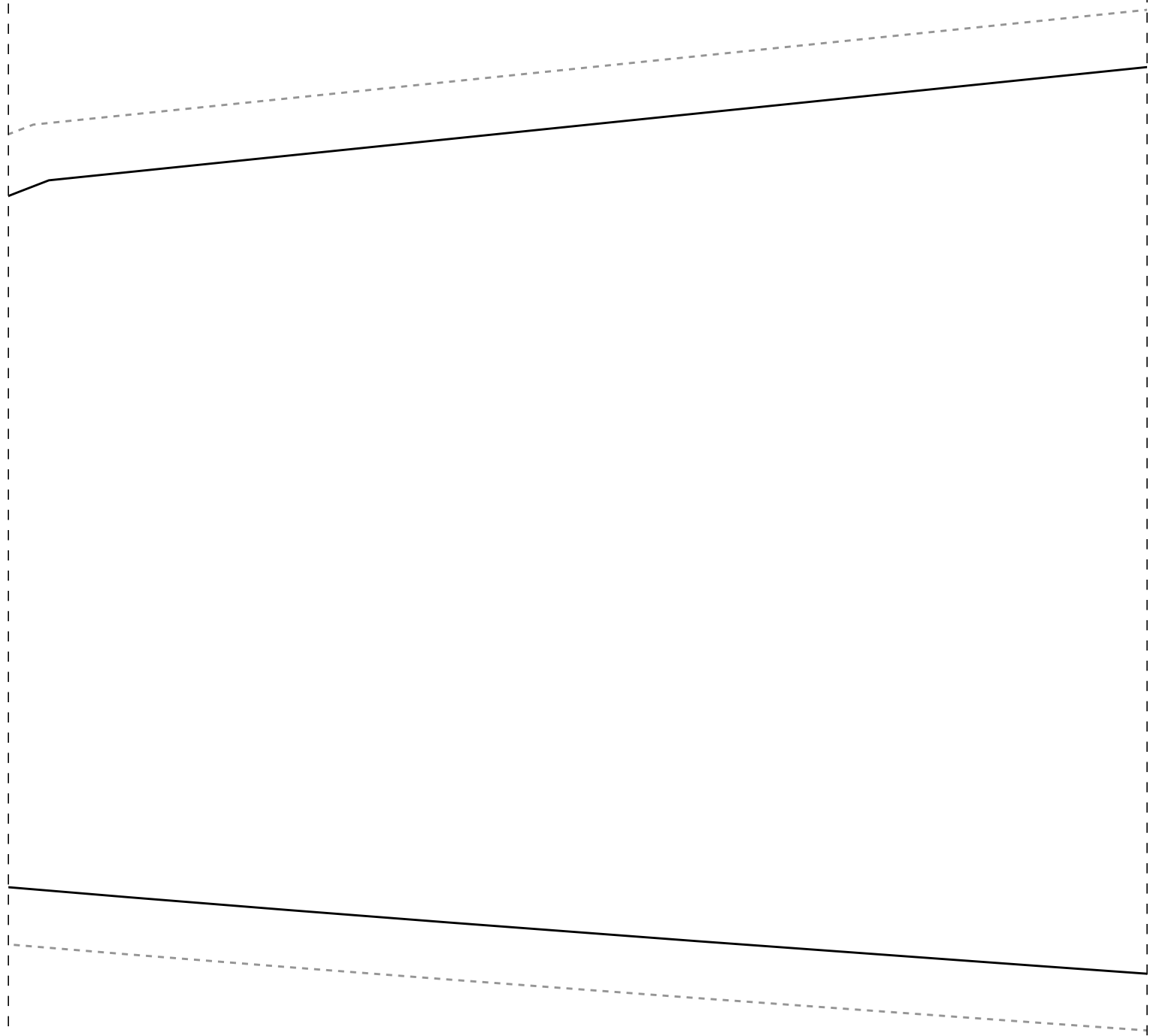
Cintura



1-6



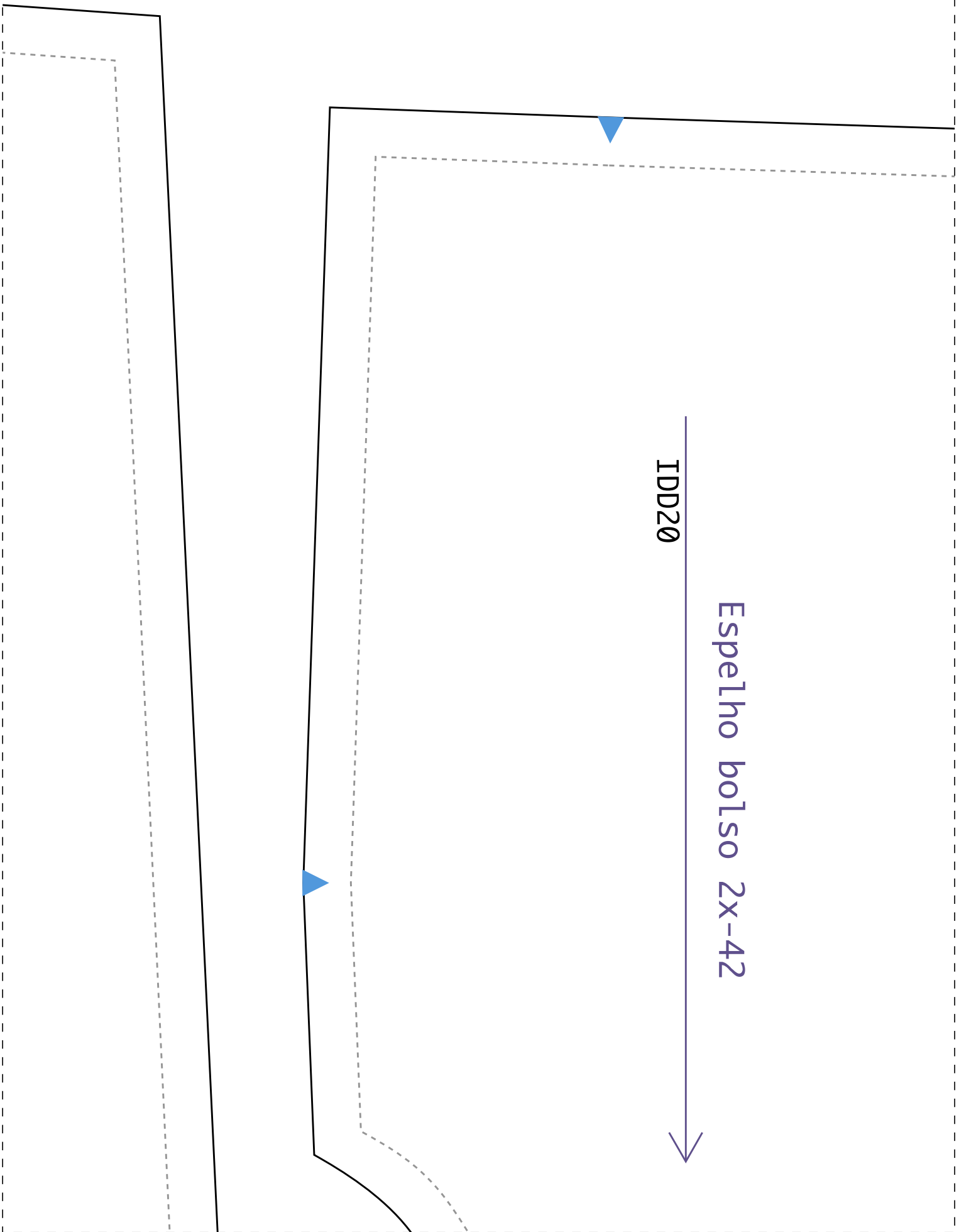




3-6



1-7

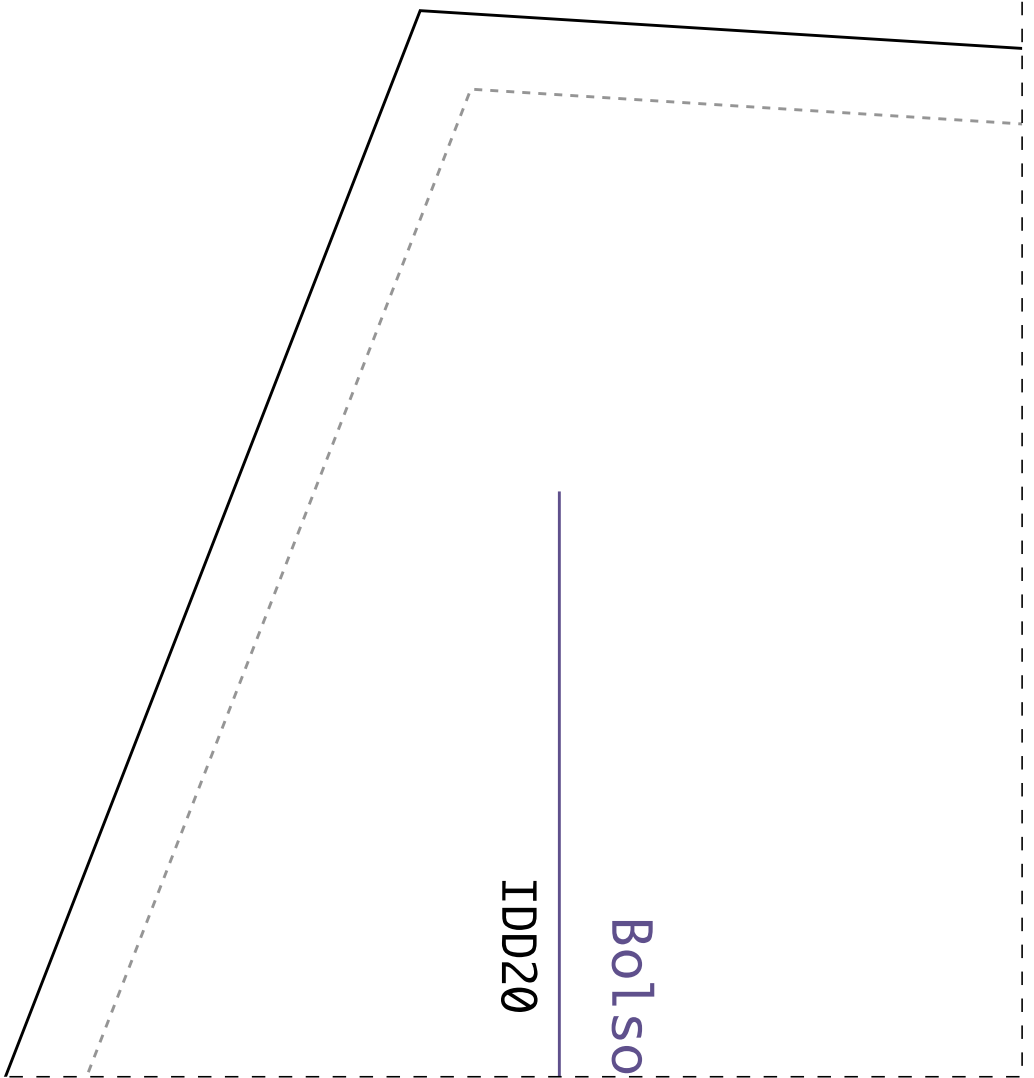
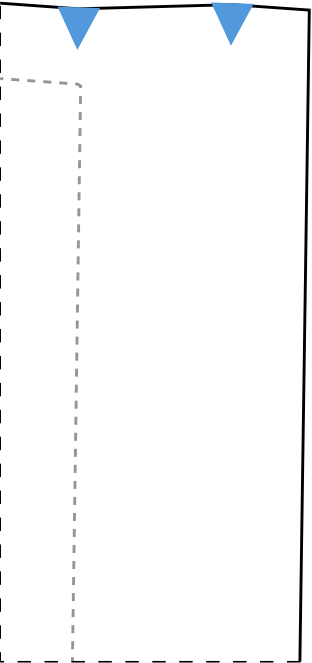
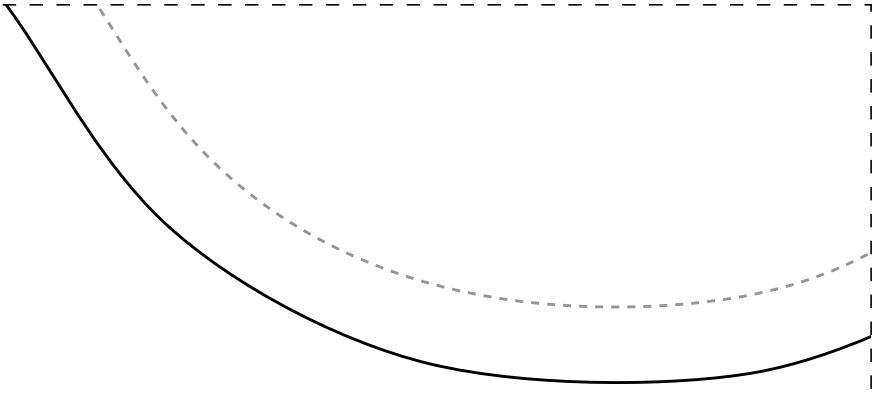
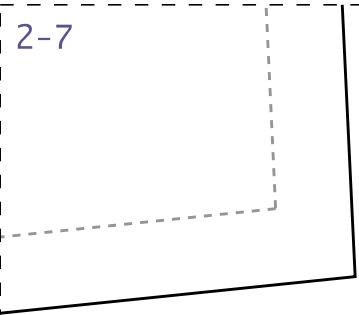


IDD20

Espelho bolso 2x-42

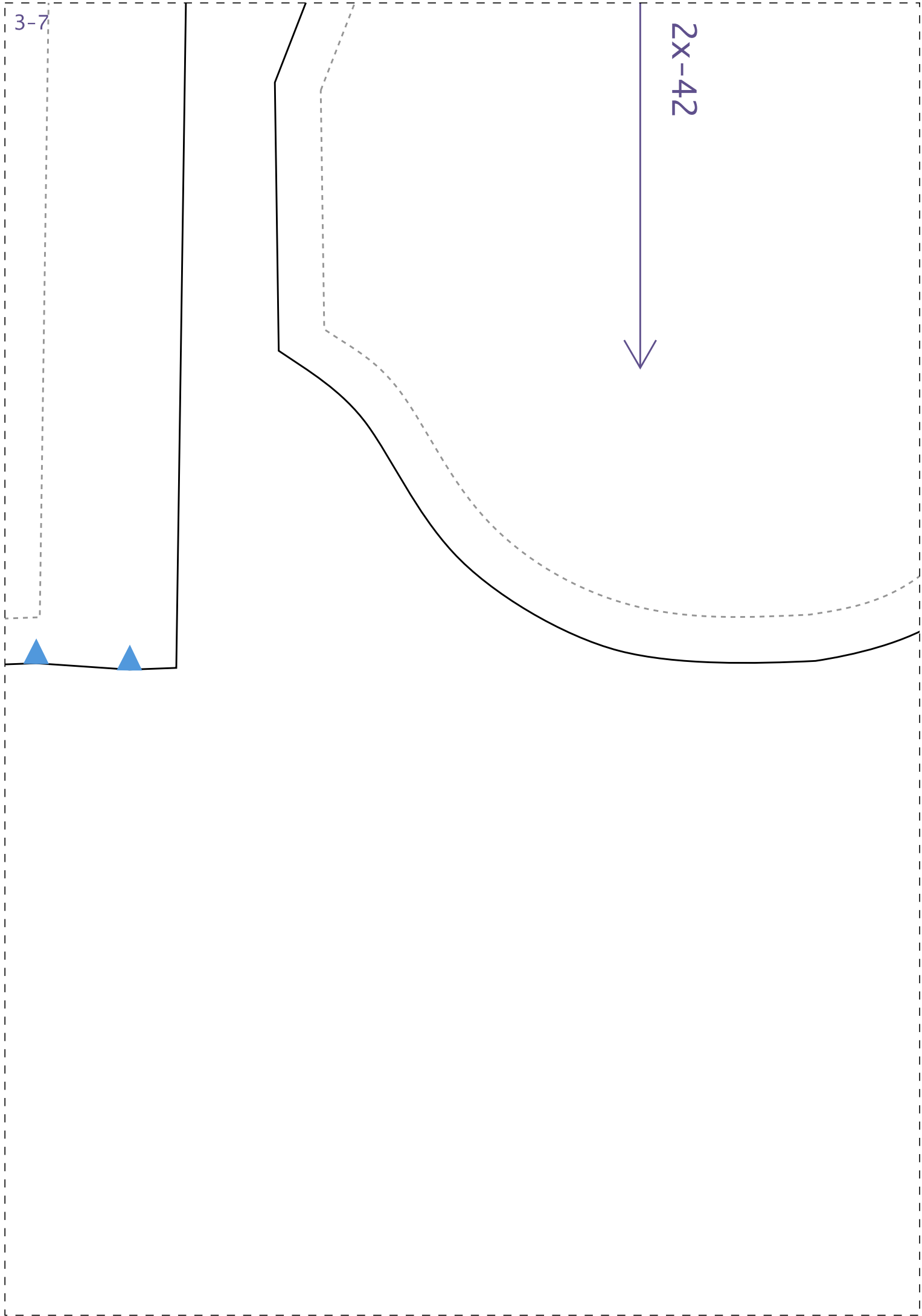


2-7



IDD20

Bols0

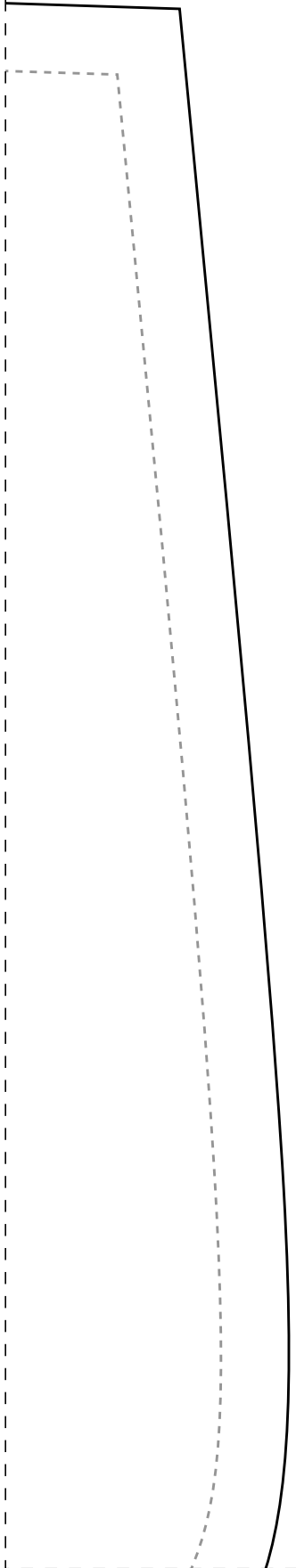


3-7

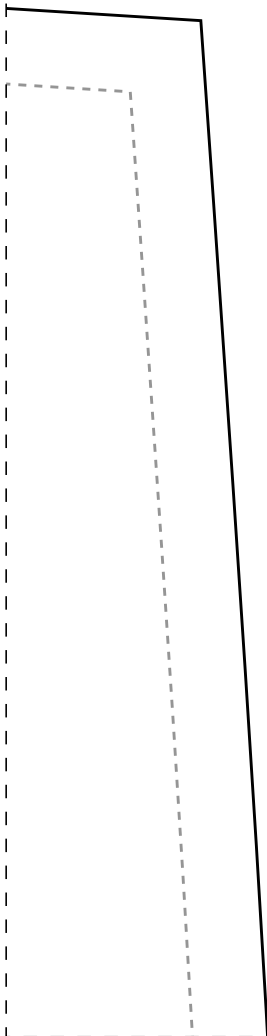
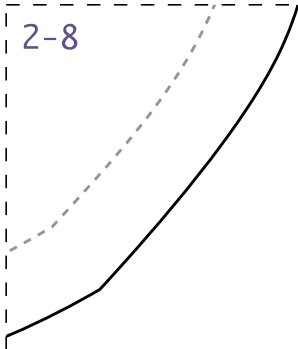
2x-42



1-8



2-8



3-8

