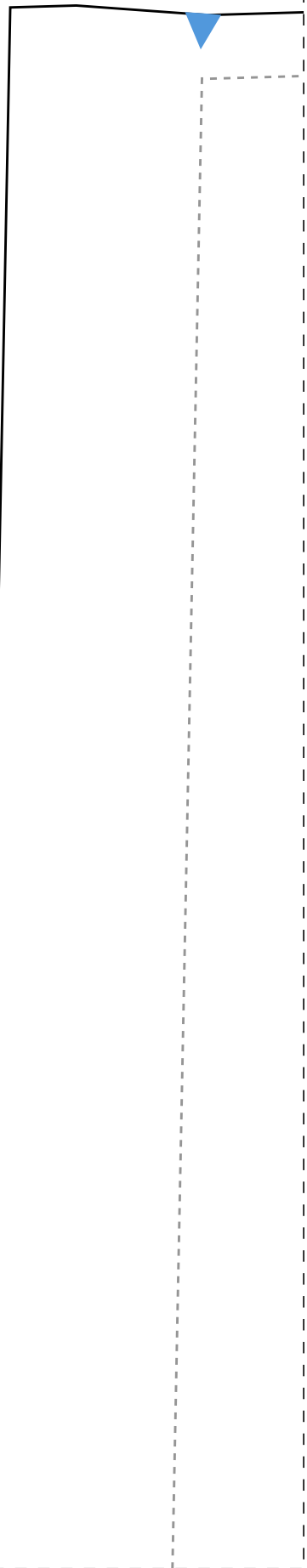


1-1

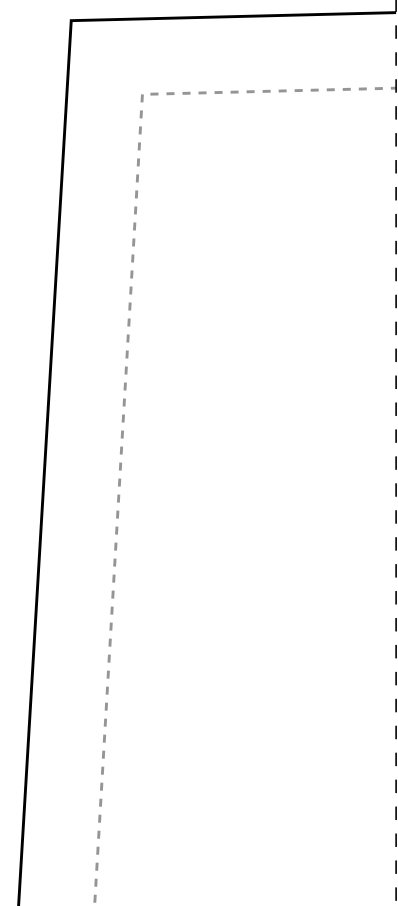
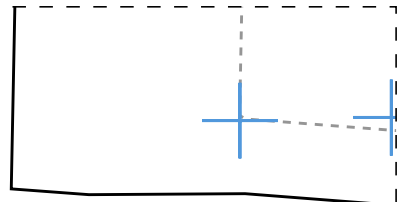


2-1

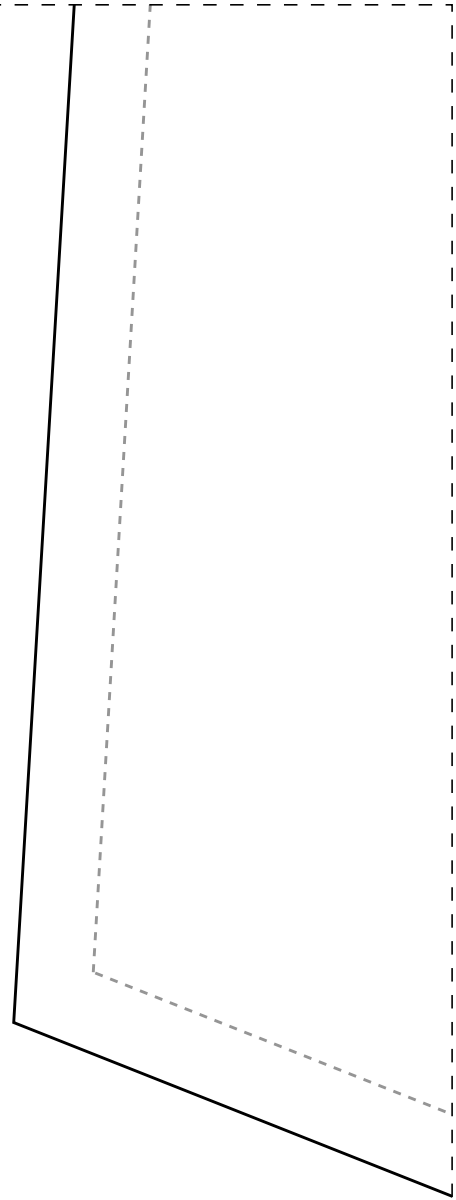
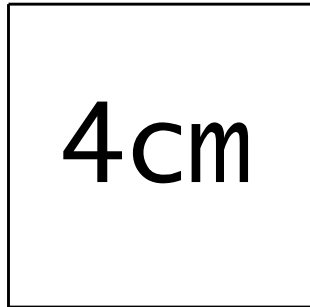
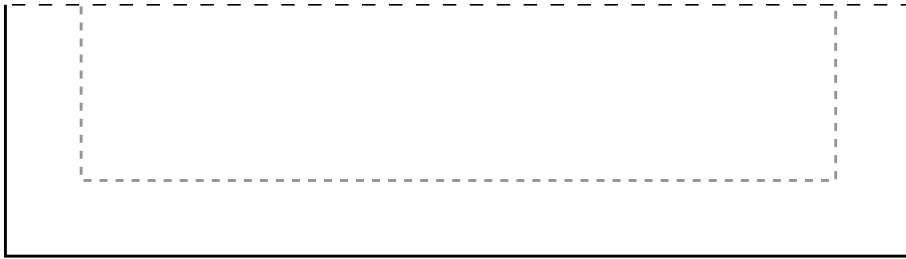
Cós 2x-44



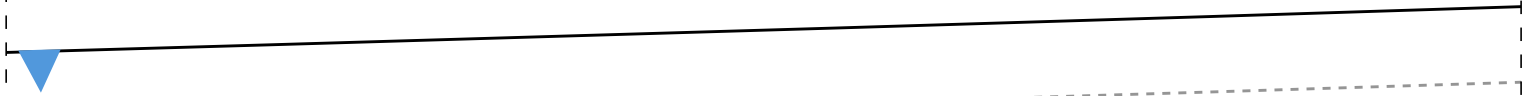
IDD20



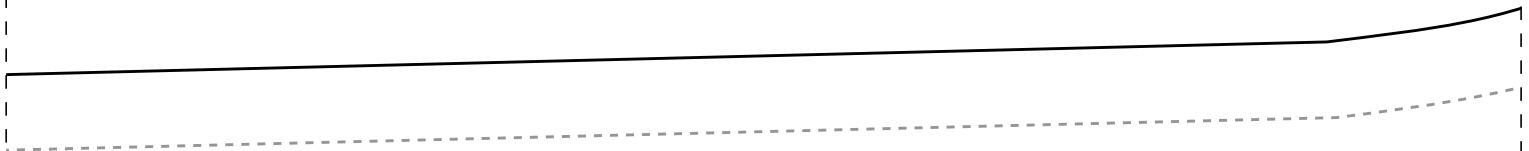
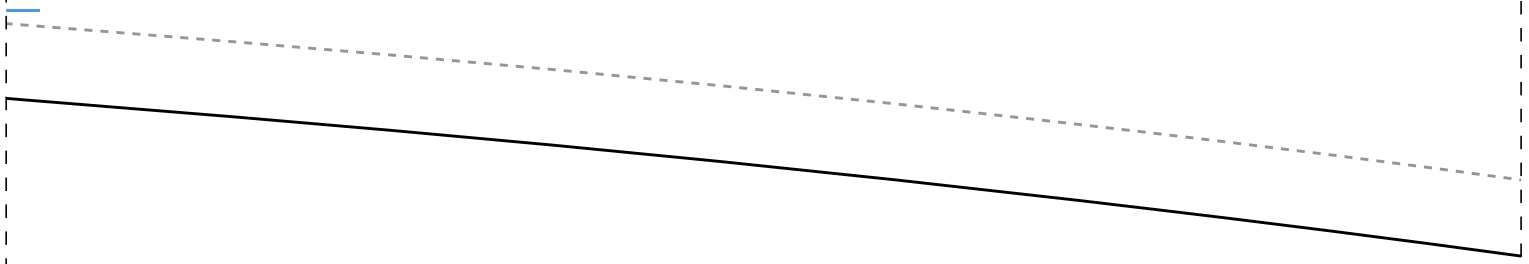
3-1



1-2



2-2

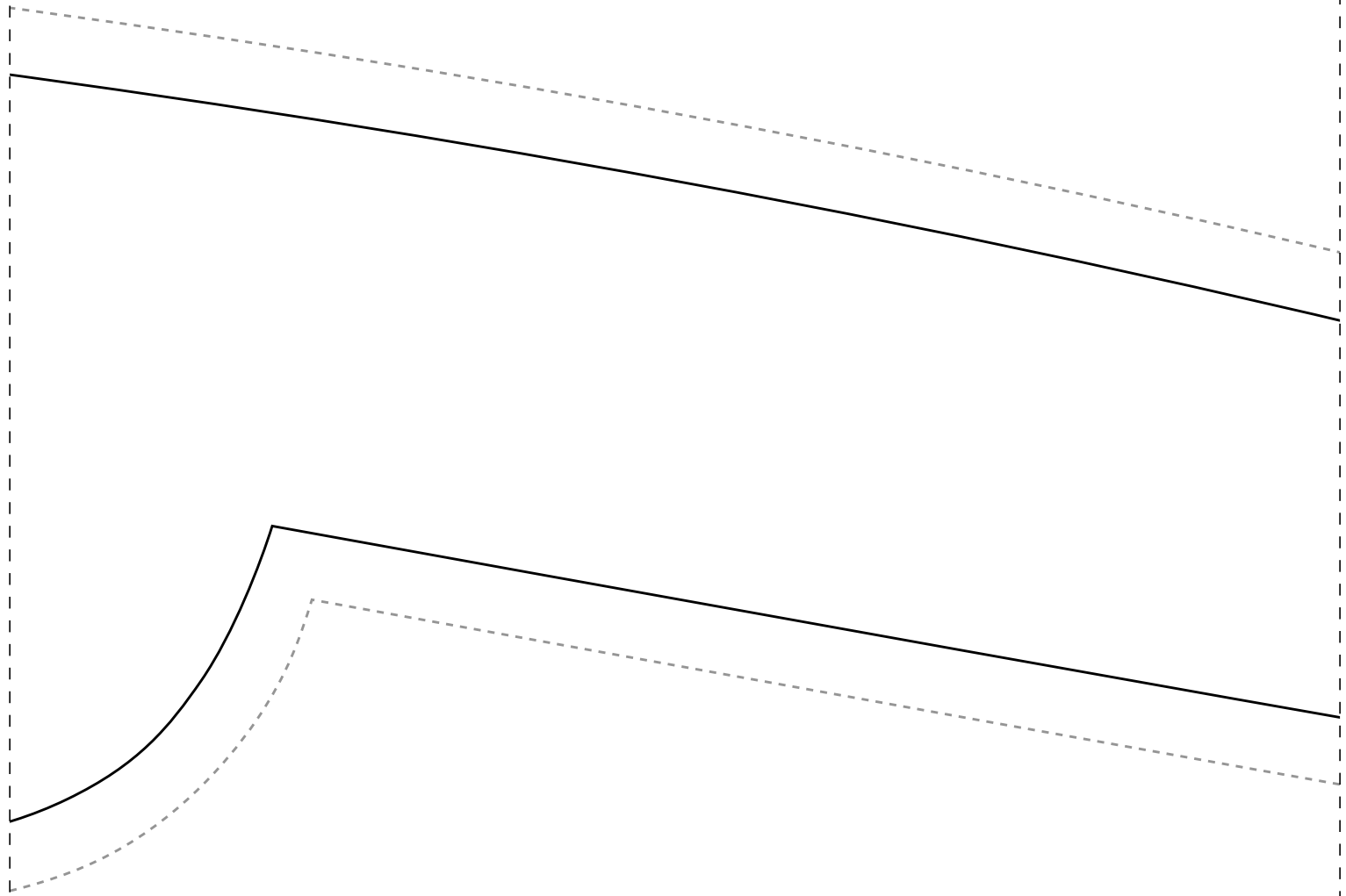


Ficha:

- Tecido plano 1,4m
- Indicado tecidos fl
viscose, viscolinho
chambray, etc
- Barra com bainha 30
- Medidas Elástico: 3
40-68cm/42-70cm/44-7
50-80cm/52-82cm/54-8
- 1,6m para os tamanh
- 1,8m para os tamanh
- 2m para os tamanhos
- 2,1m para os tamanh
- 2,4m para os tamanh

ISSUE

IDD20



IDD20

de largura
fluidos tais como
, linho misto,

cm

36-64cm/38-66cm

72cm/46-76cm/48-78cm

34cm

nos 36-38

nos 40-42

s 44-46

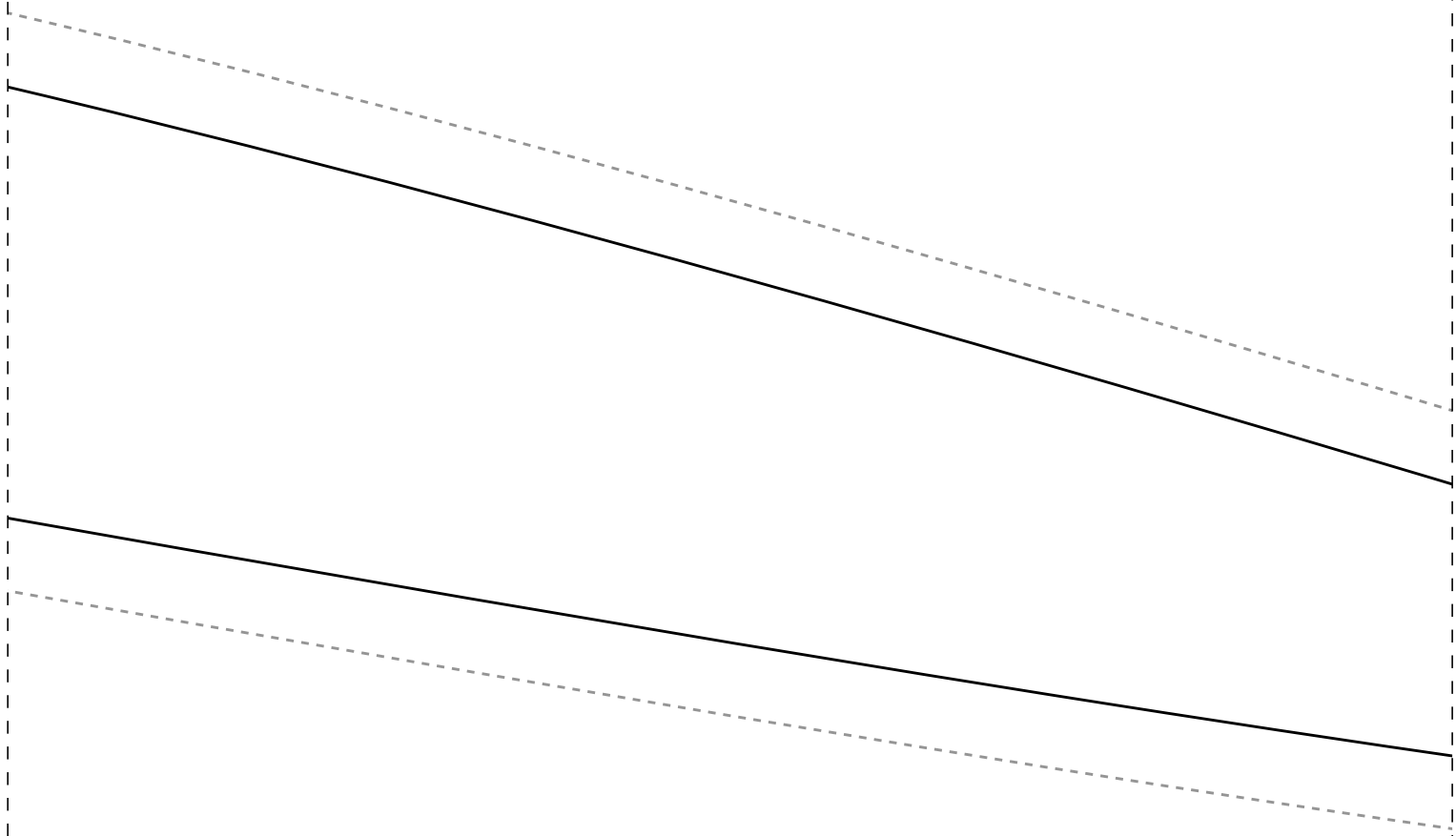
nos 48-50

nos 52-54

Instituto Diana Demarchi
emana CMC
alça com Elástico na Cin

Costas 2x

2-4



Frente 2x

Instituto Dianc

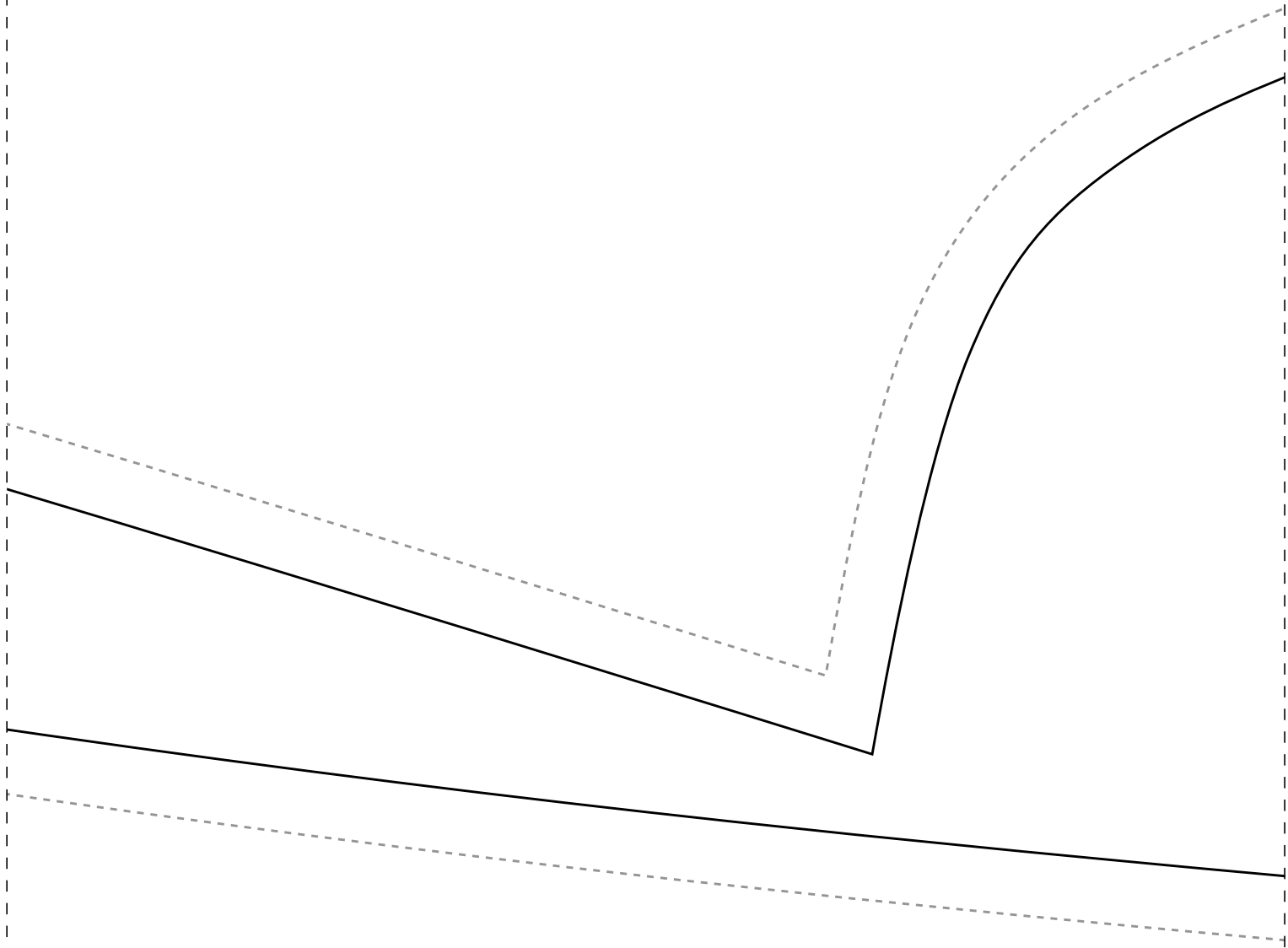
Semana CMC

Calça com Elást

1-5

tura

-44

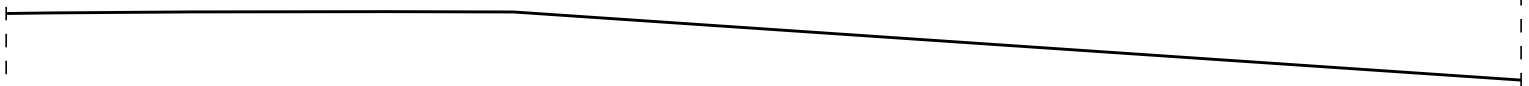


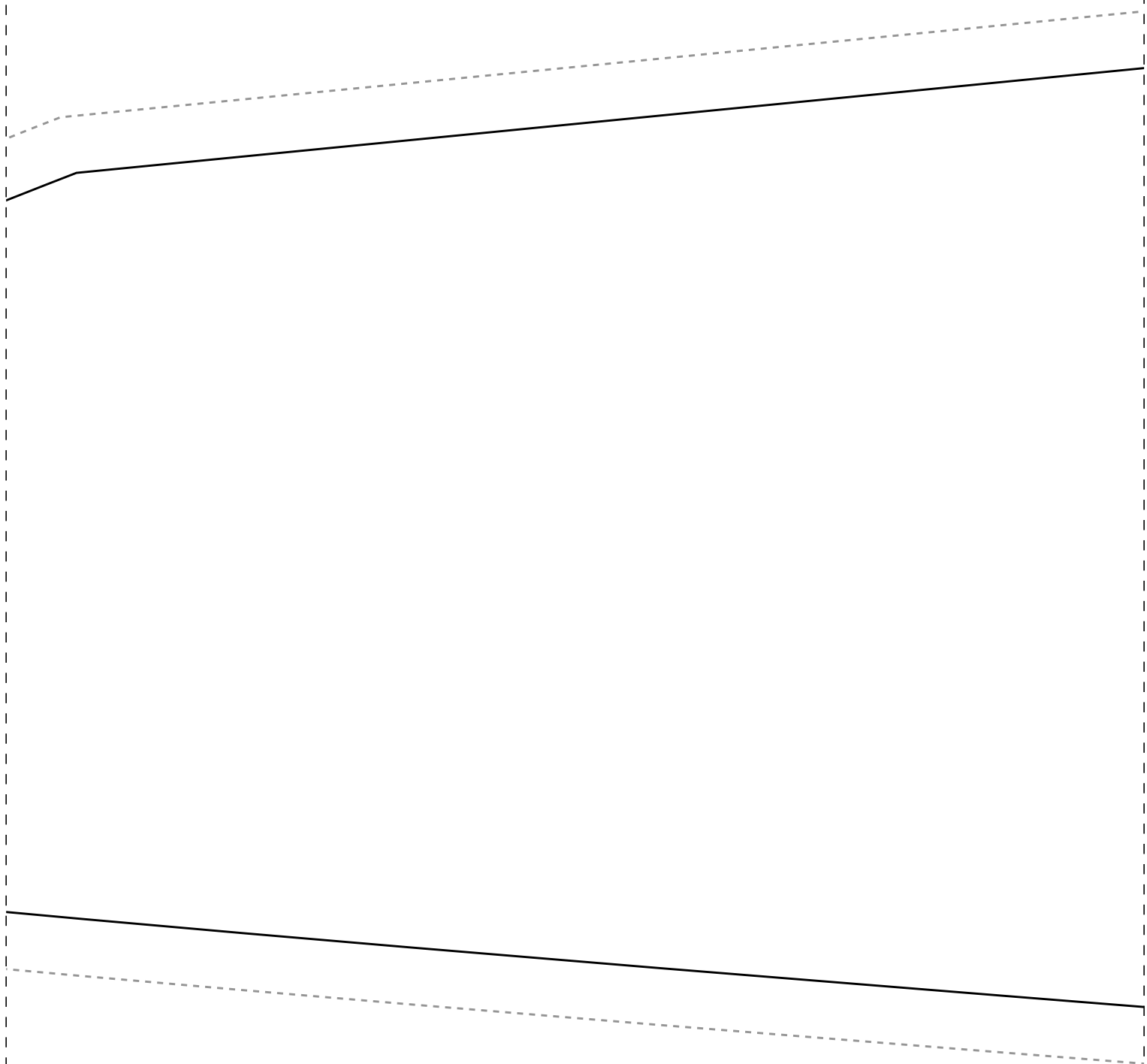


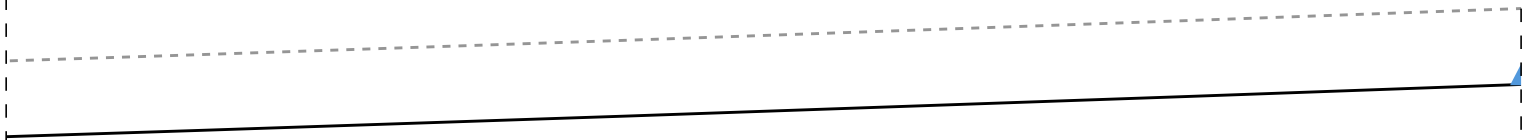
a Demarchi

tico na Cintura

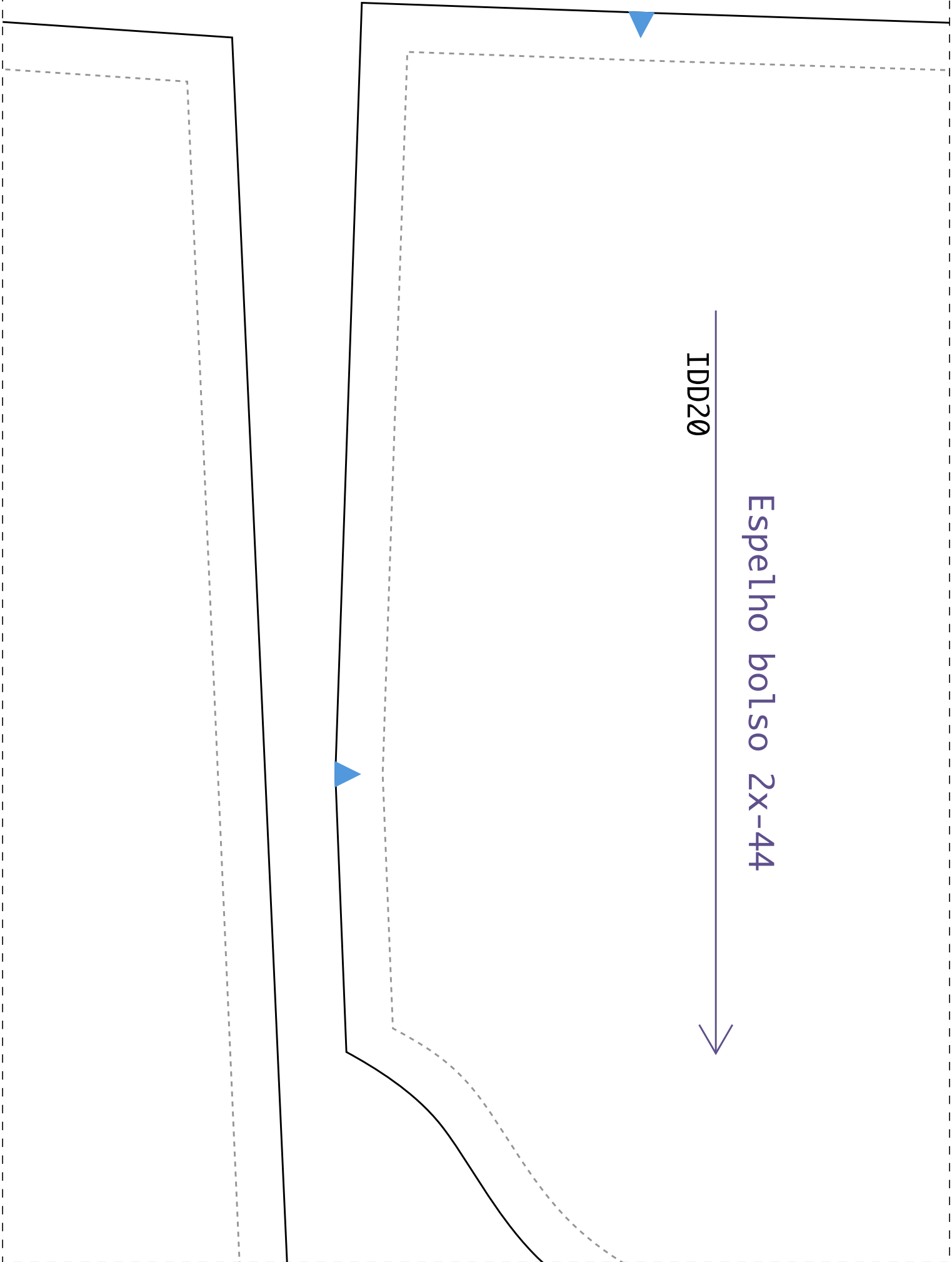
1-6







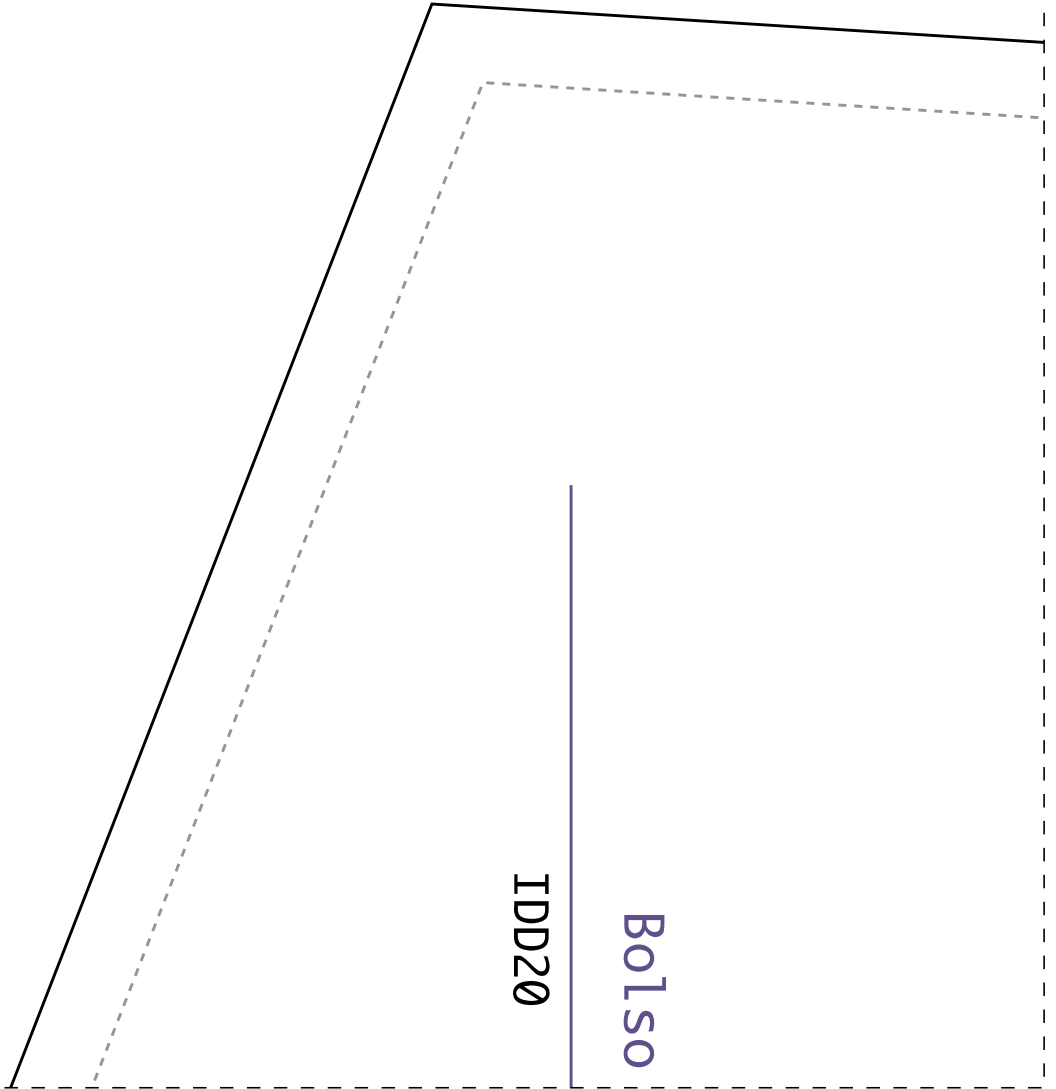
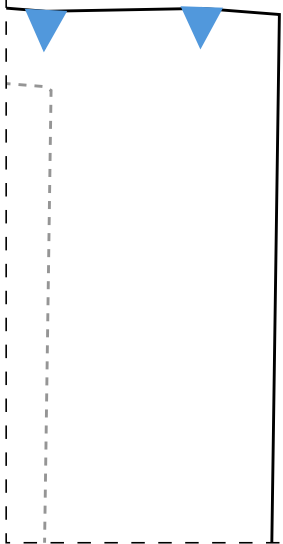
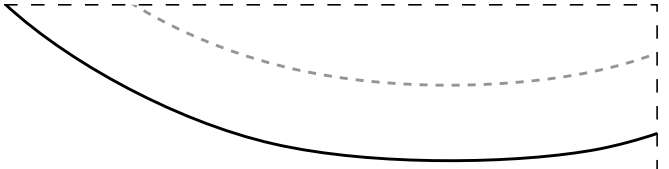
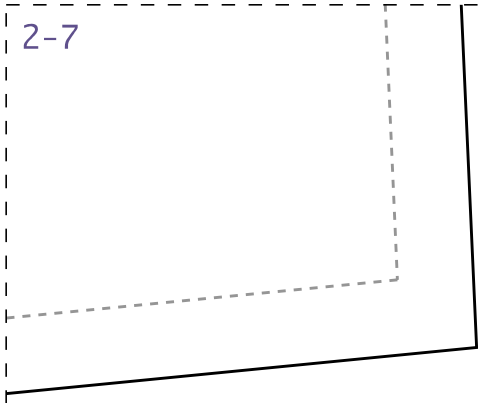
1-7



IDD20

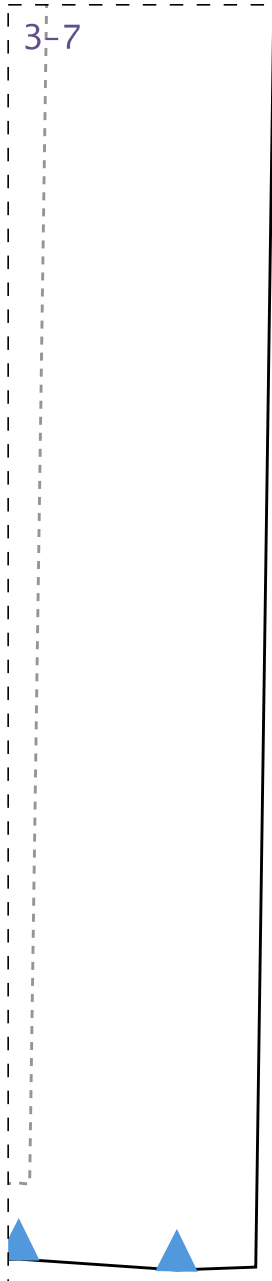
Espelinho bolso 2X-44

2-7

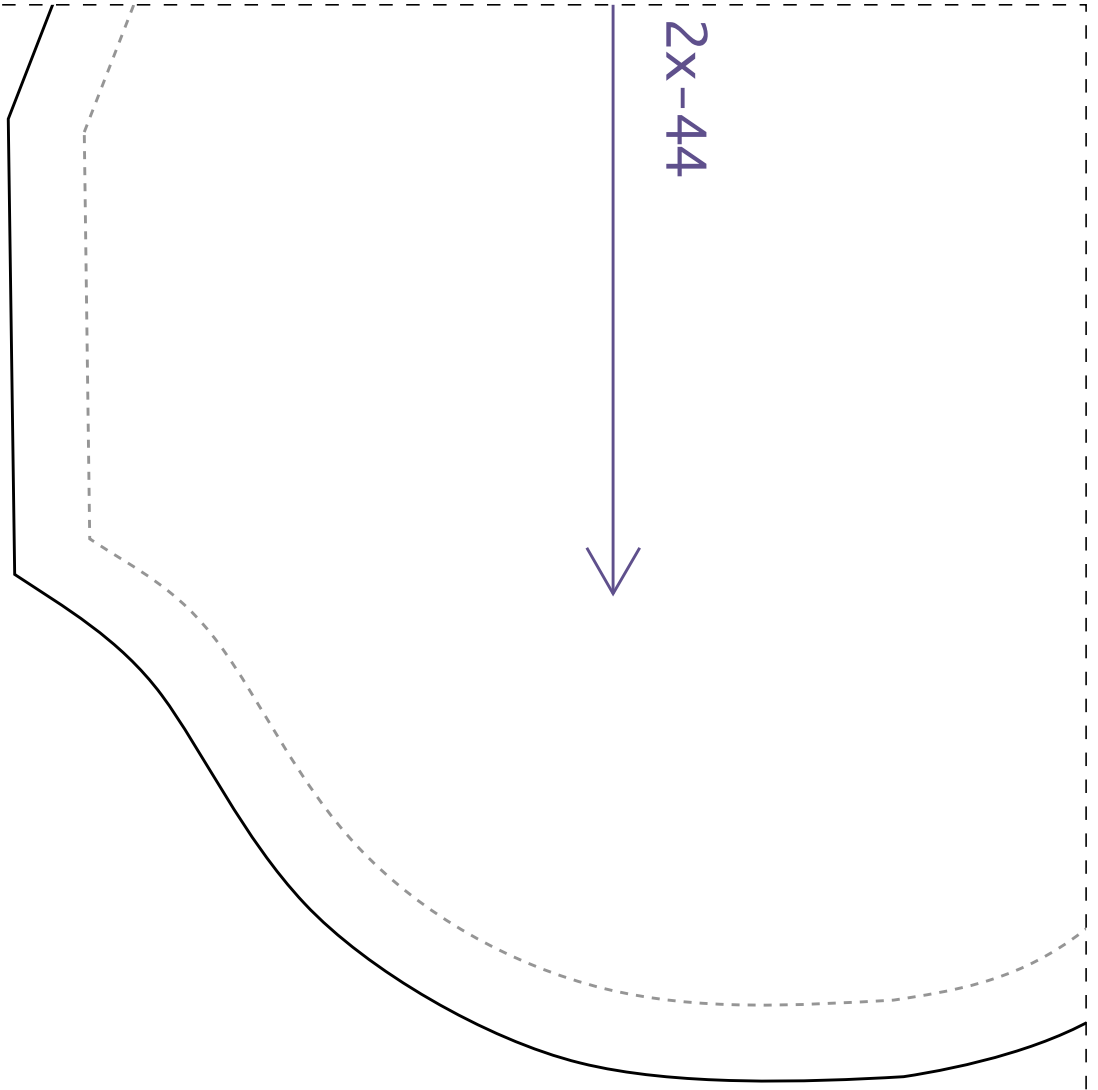


IDD20

Bols0

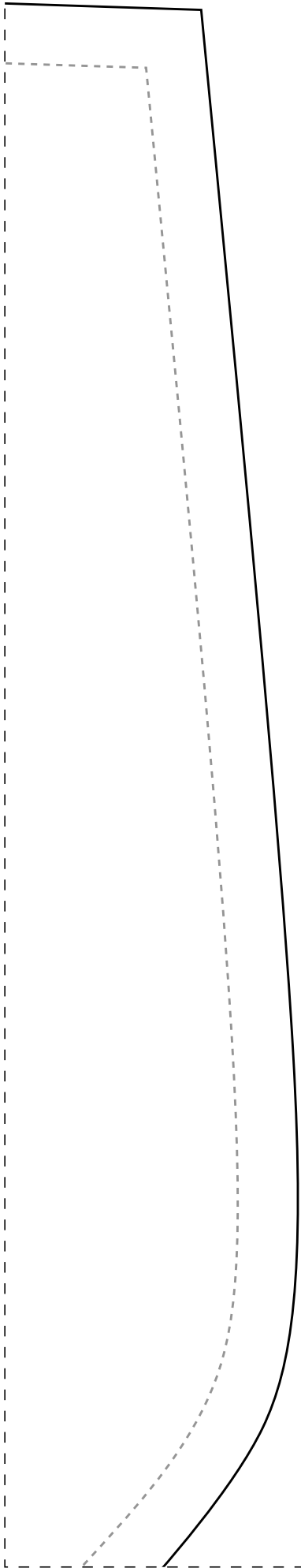


3-7

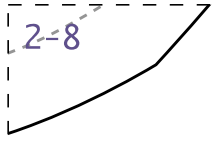


2X-44

1-8



2-8



3-8

