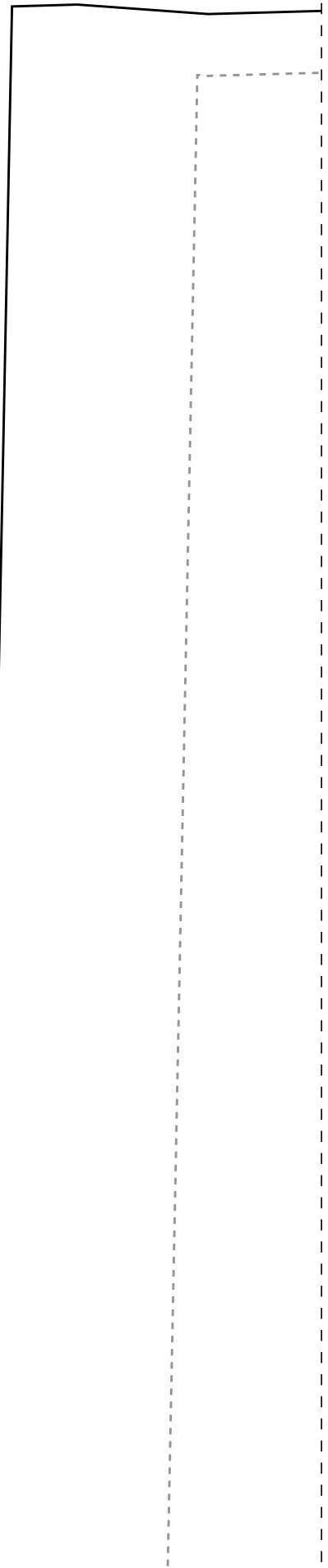


1-1

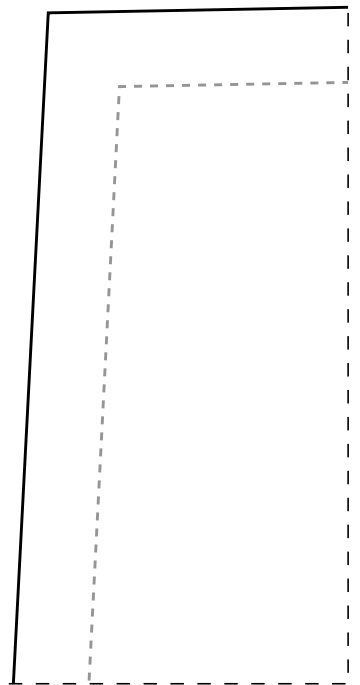
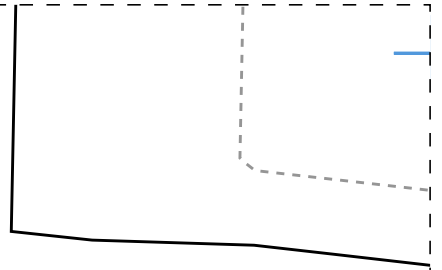


2-1

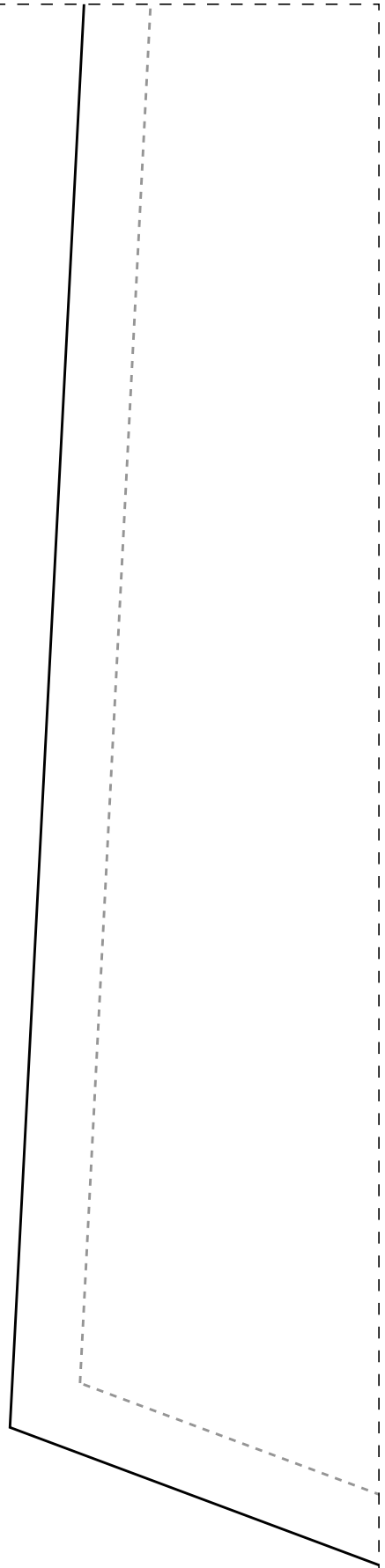
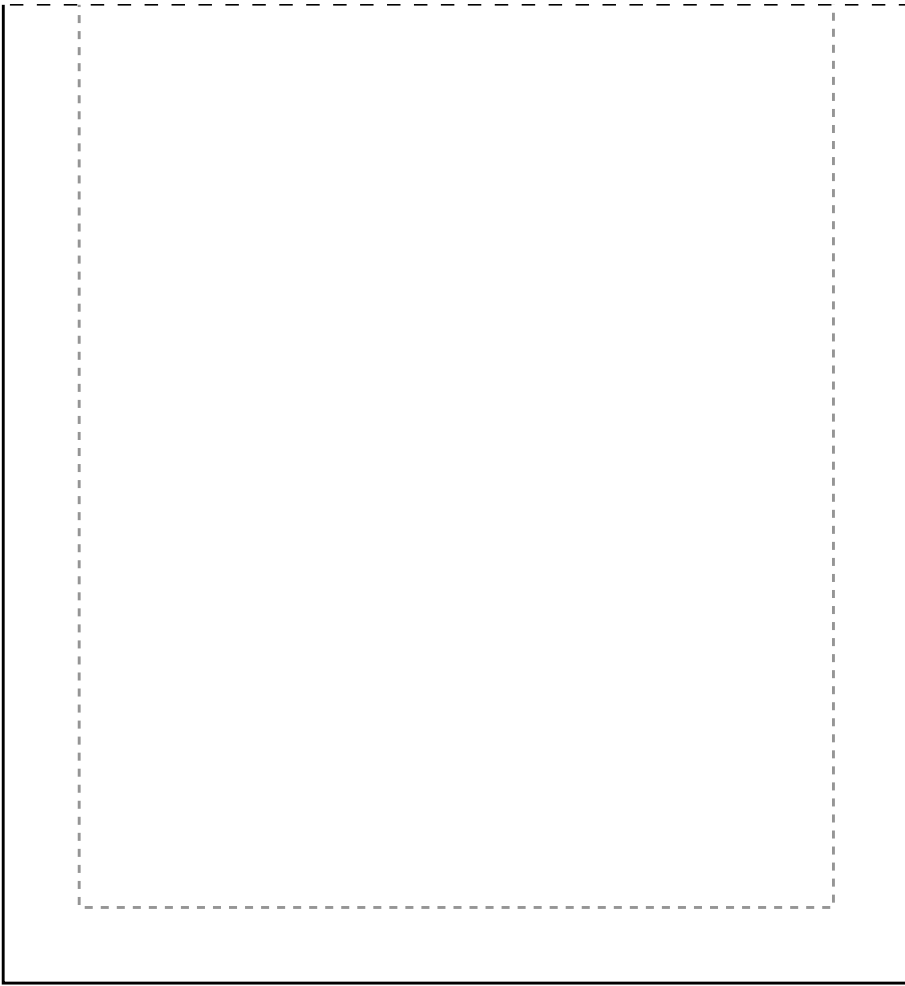
Cós 2x-52



IDD20

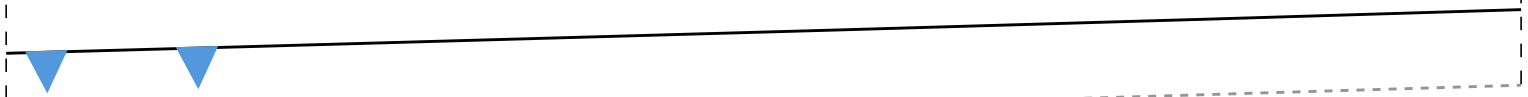


3-1

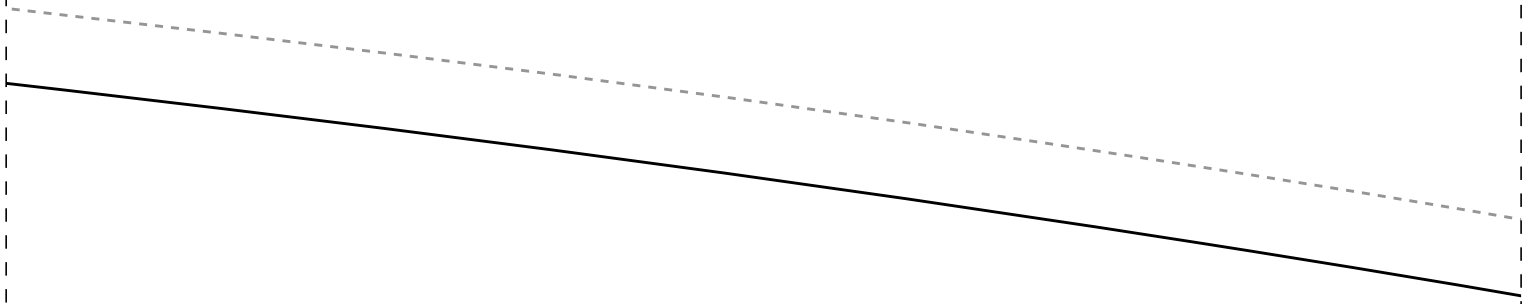


4cm

1-2



2-2



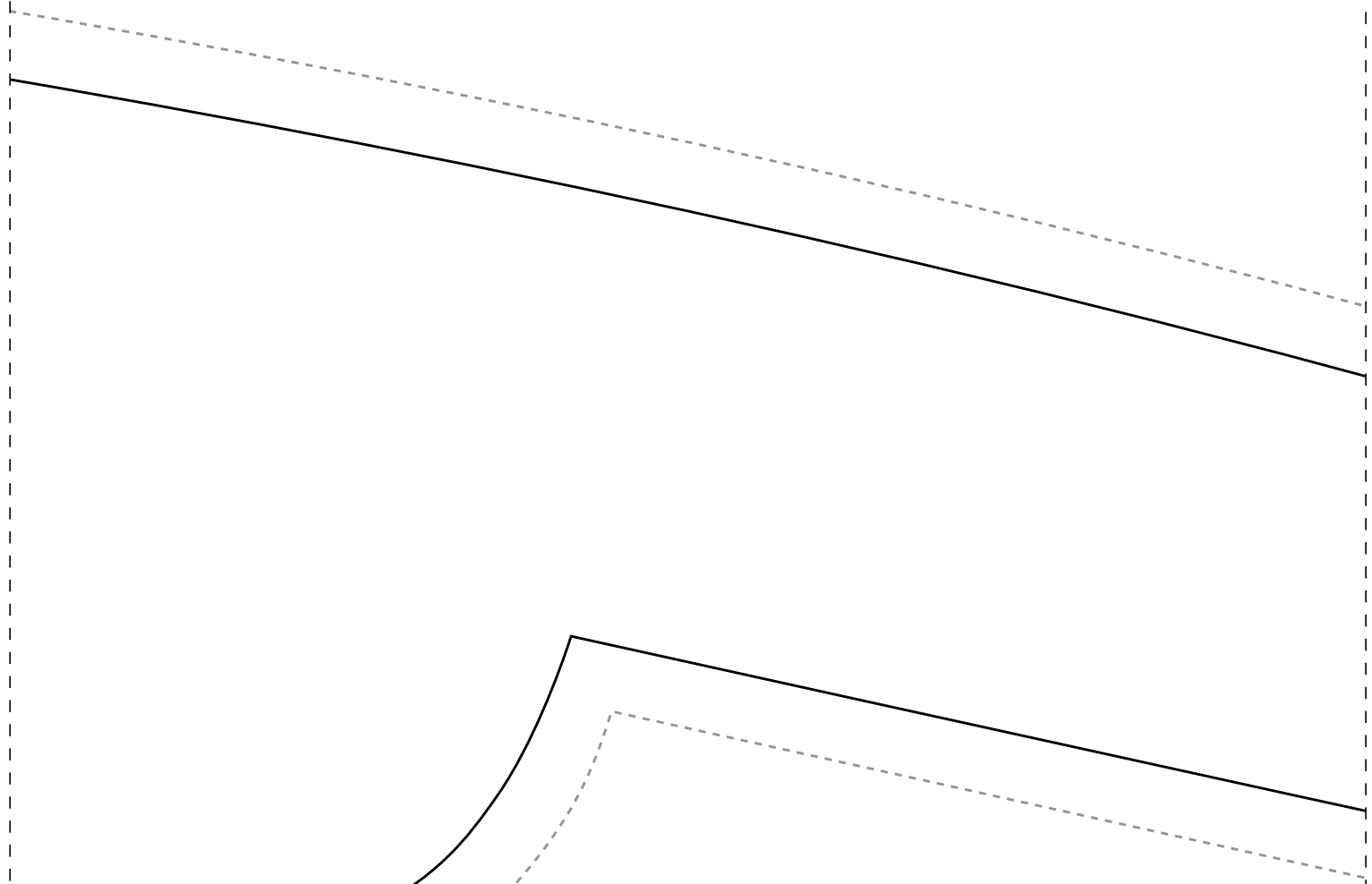
Ficha:

- Tecido plano
- Indicado tecido viscose, visc chambray, etc
- Barra com bainha
- Medidas Elásticas
- 40-68cm/42-70cm
- 50-80cm/52-82cm
- 1,6m para os
- 1,8m para os
- 2m para os te
- 2,1m para os
- 2,4m para os

1-3

IDD20

HSSC



IDD20

1,4m de largura
dos fluidos tais como
colinho, linho misto,

linha 3cm

tico: 36-64cm/38-66cm

cm/44-72cm/46-76cm/48-78cm

cm/54-84cm

tamanhos 36-38

tamanhos 40-42

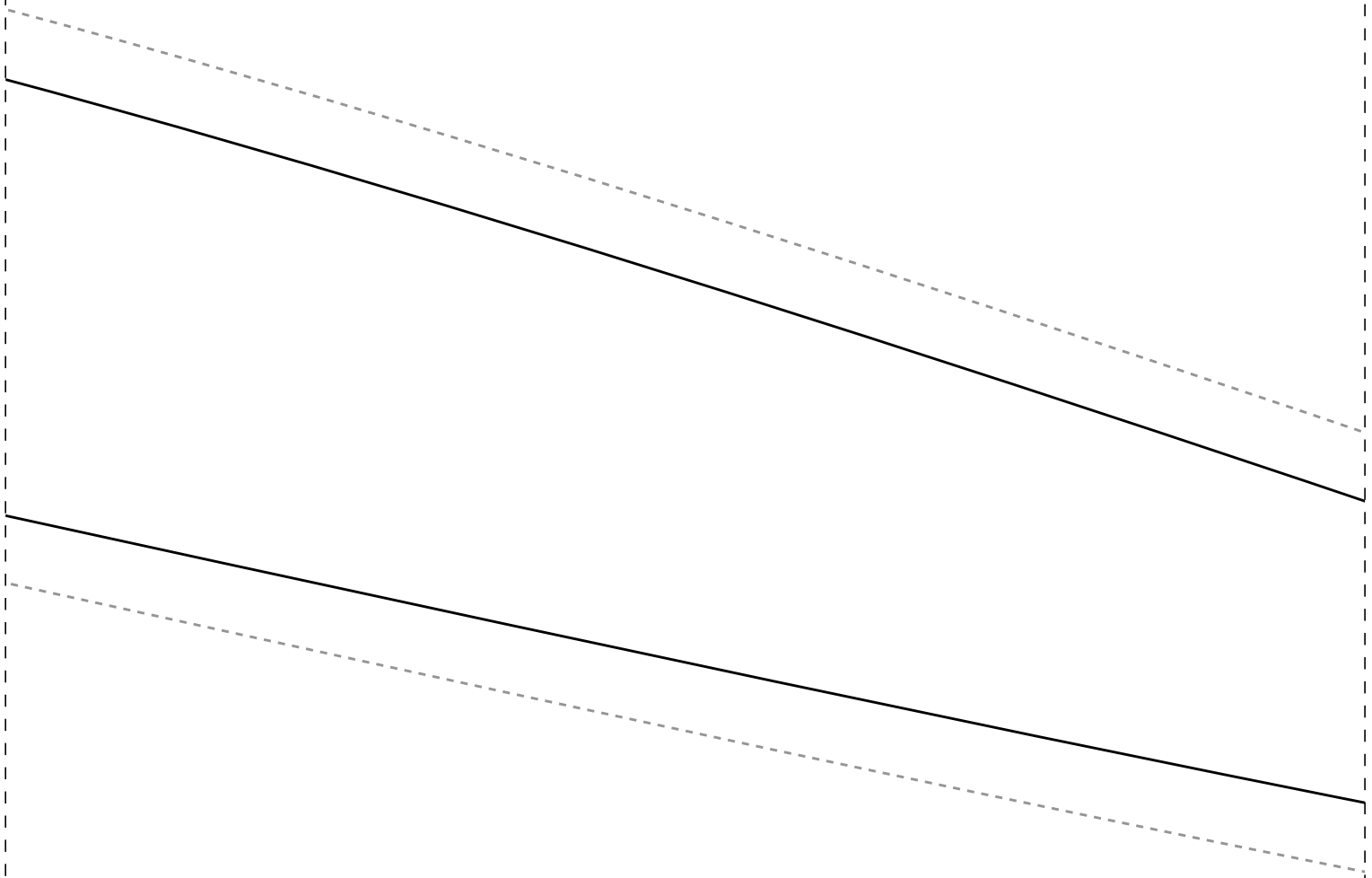
tamanhos 44-46

tamanhos 48-50

tamanhos 52-54

Instituto Diana Demarchi
semana CMC
alça com Elástico na Cir

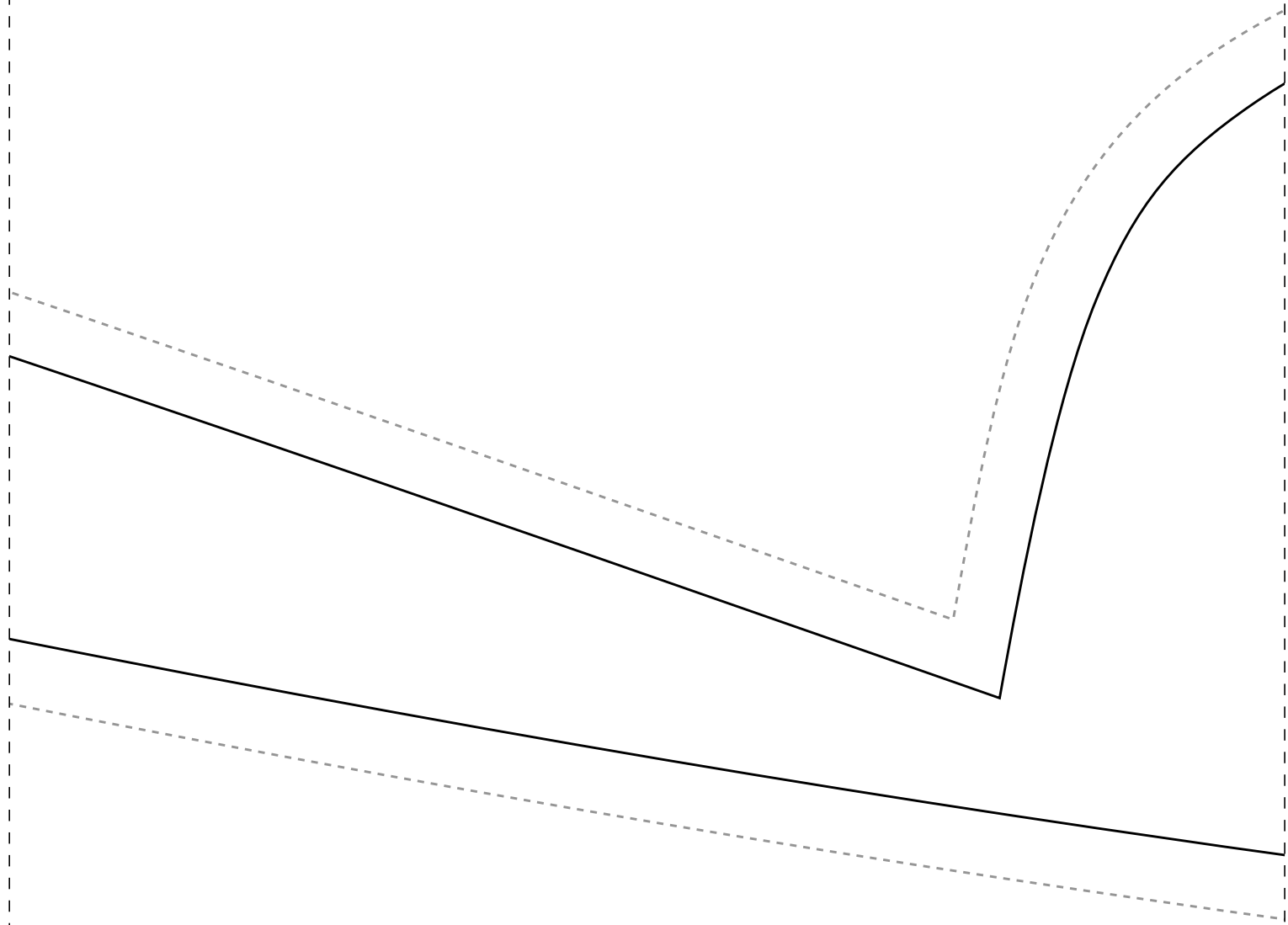
Costas 2x-52



Frent

Instituto Diana Dema
Semana CMC
Calça com Elástico n

tura

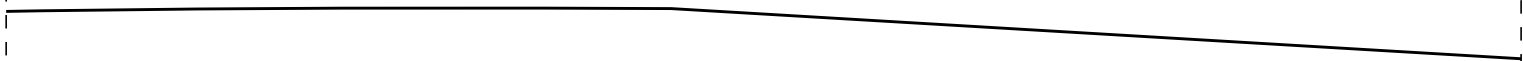


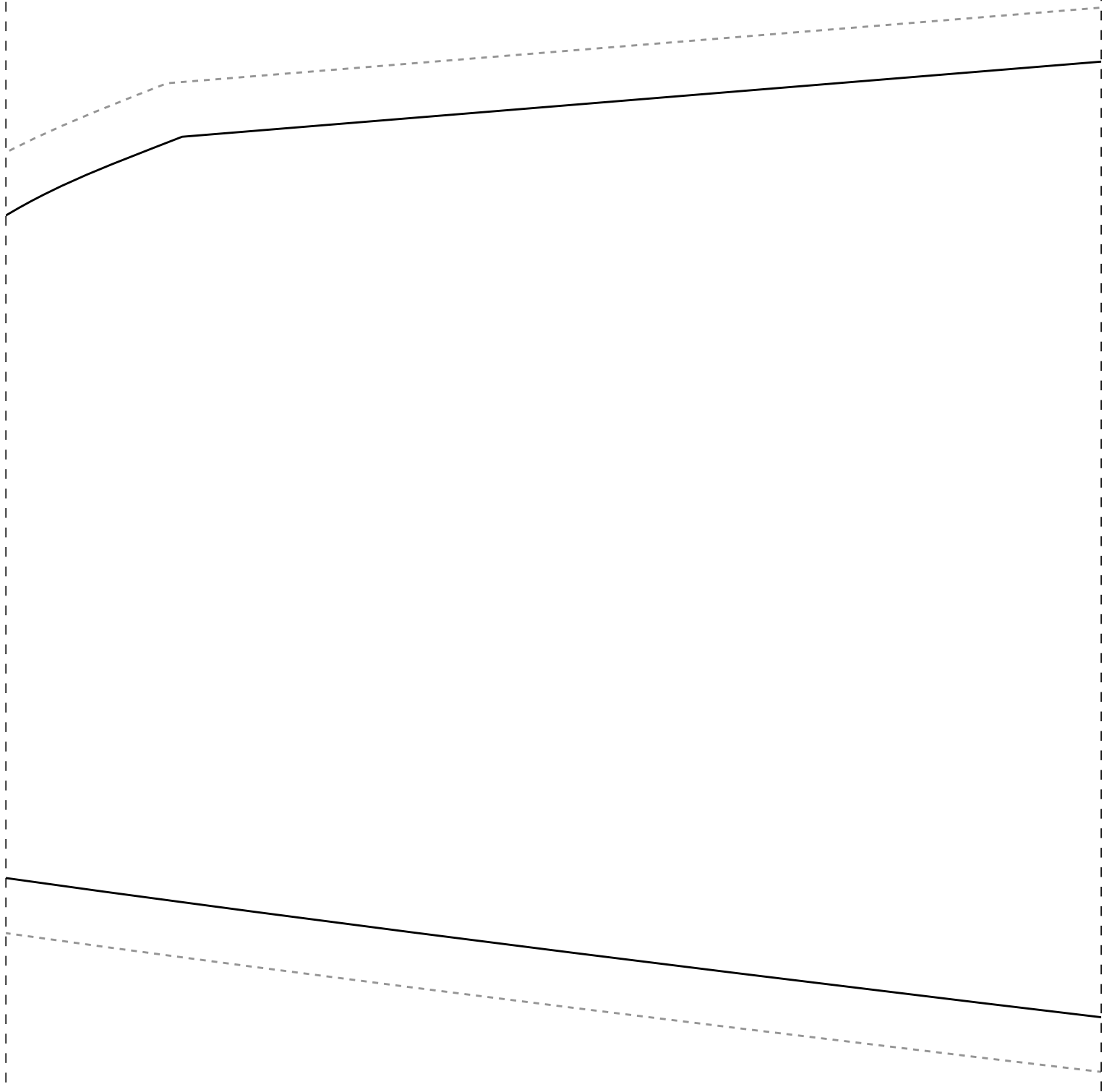
e $2x-52$

rchi

a Cintura

1-6

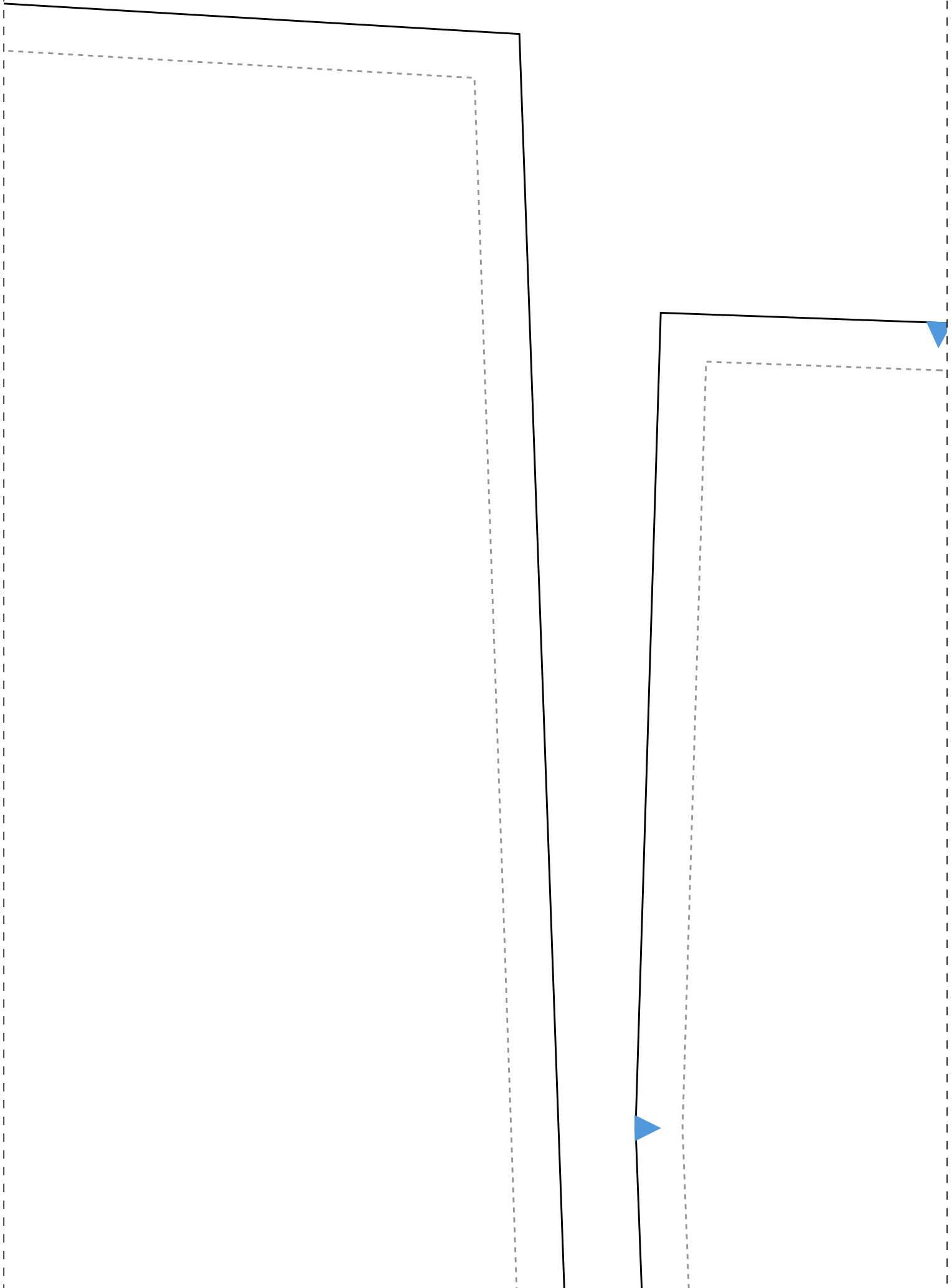




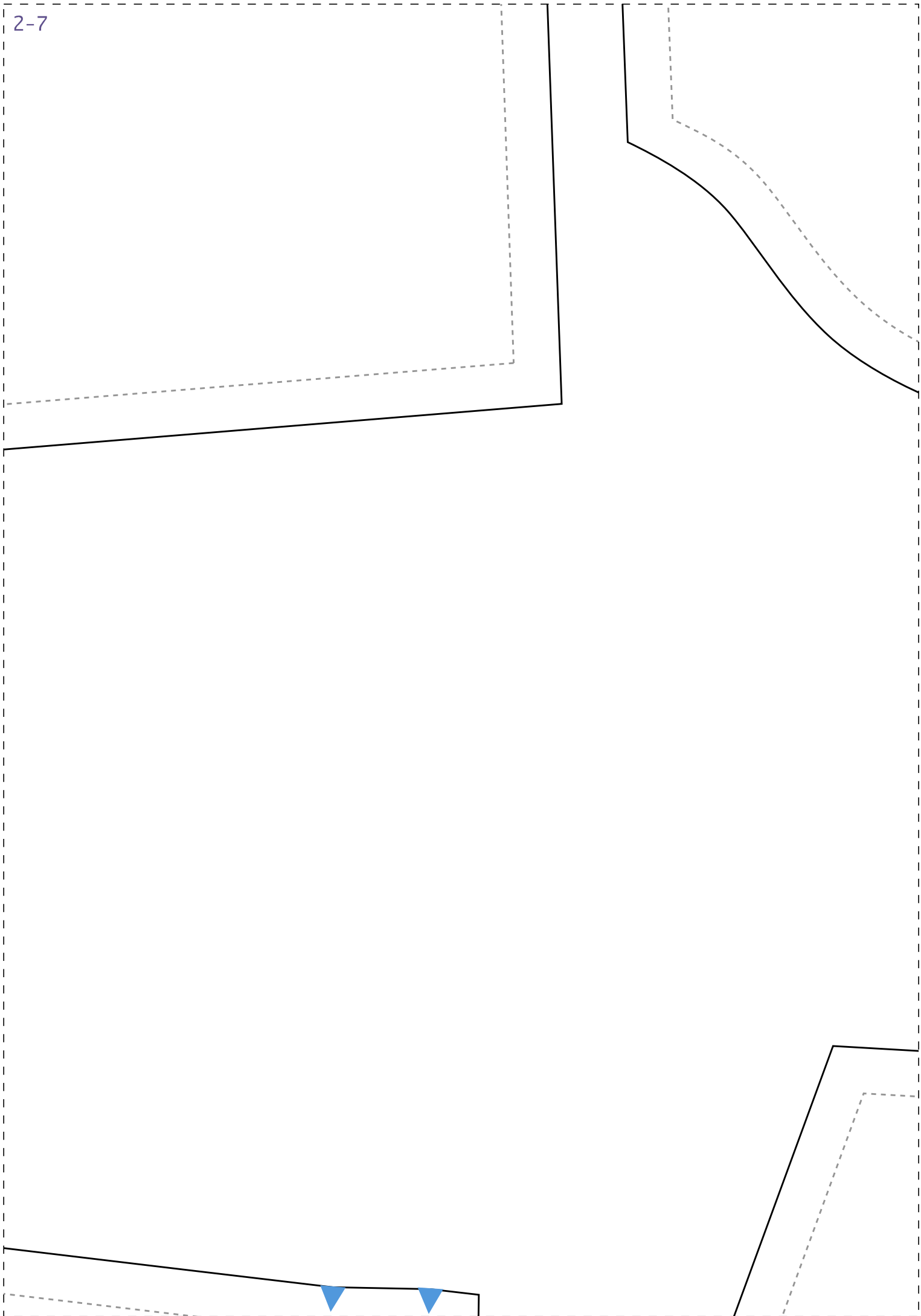
3-6



1-7

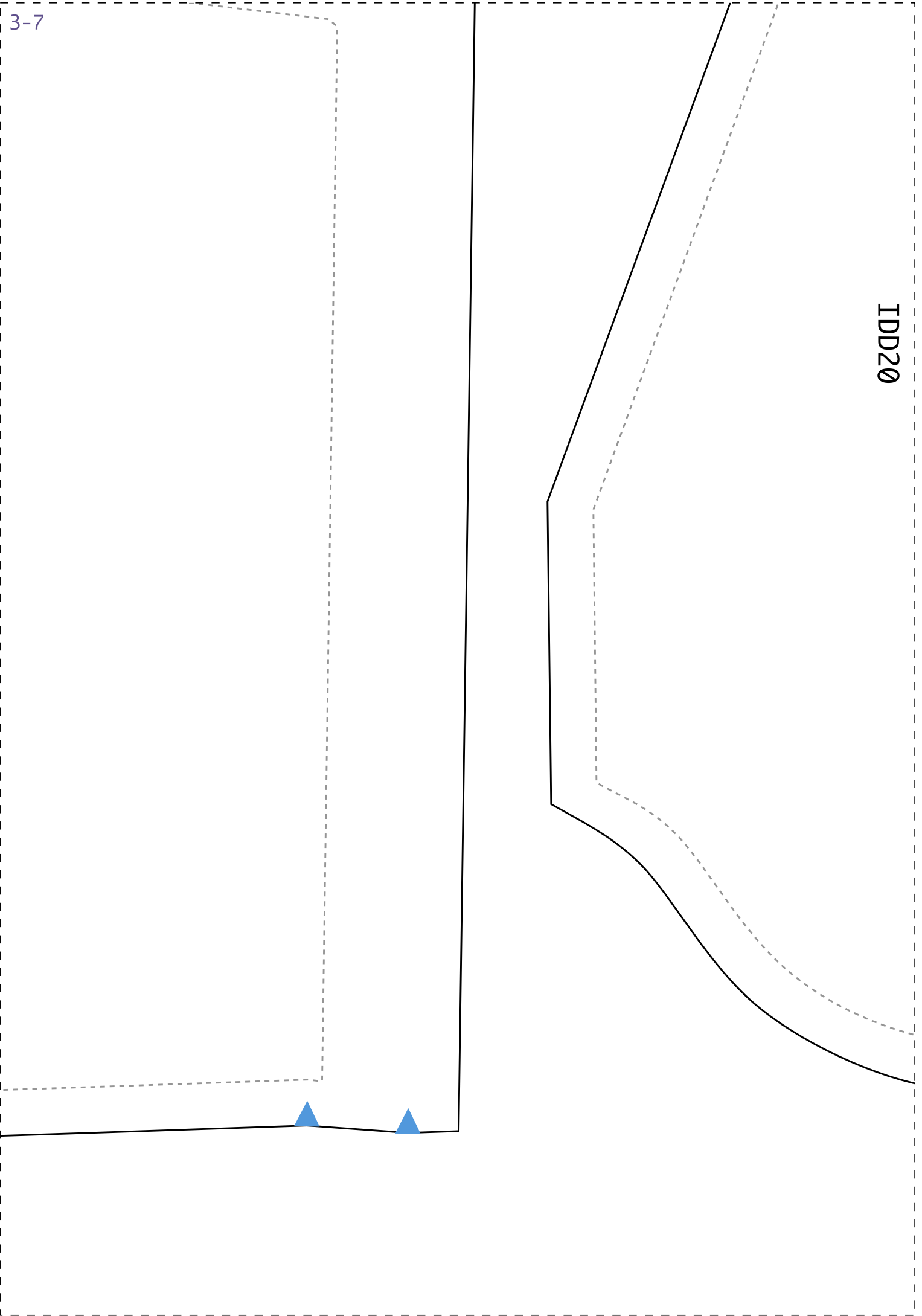


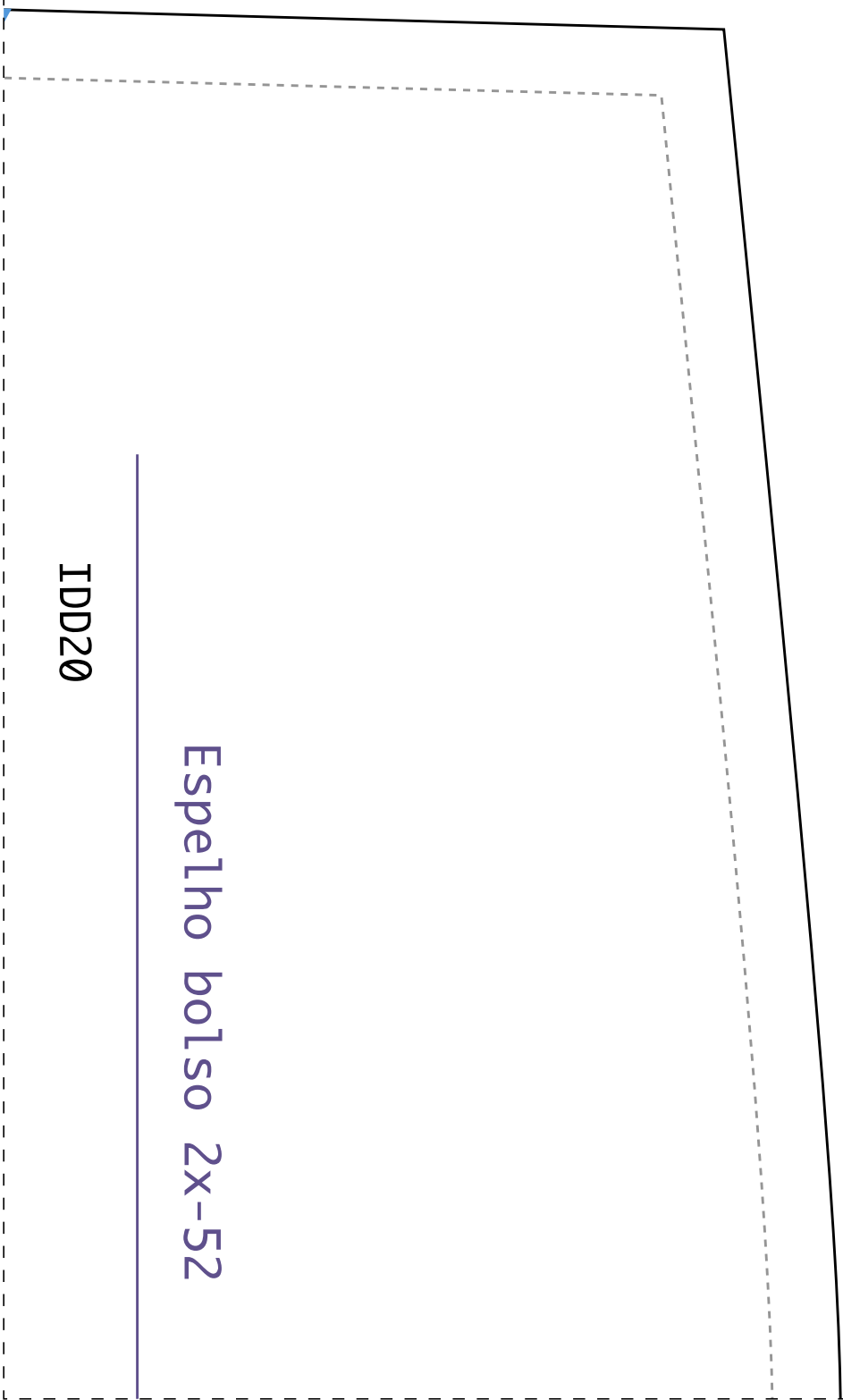
2-7



IDD20

3-7

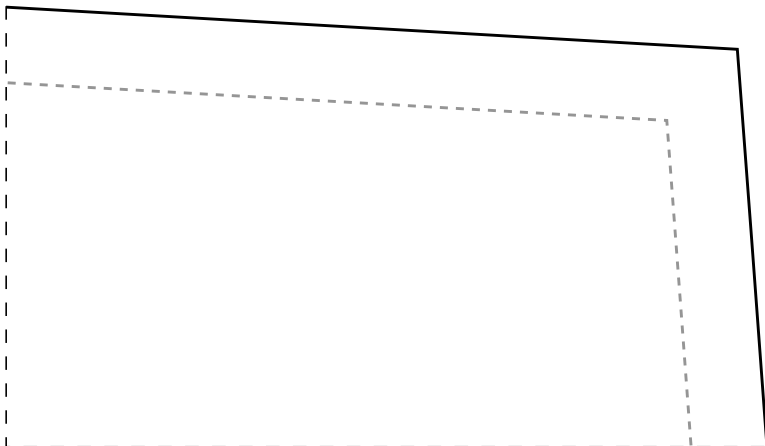
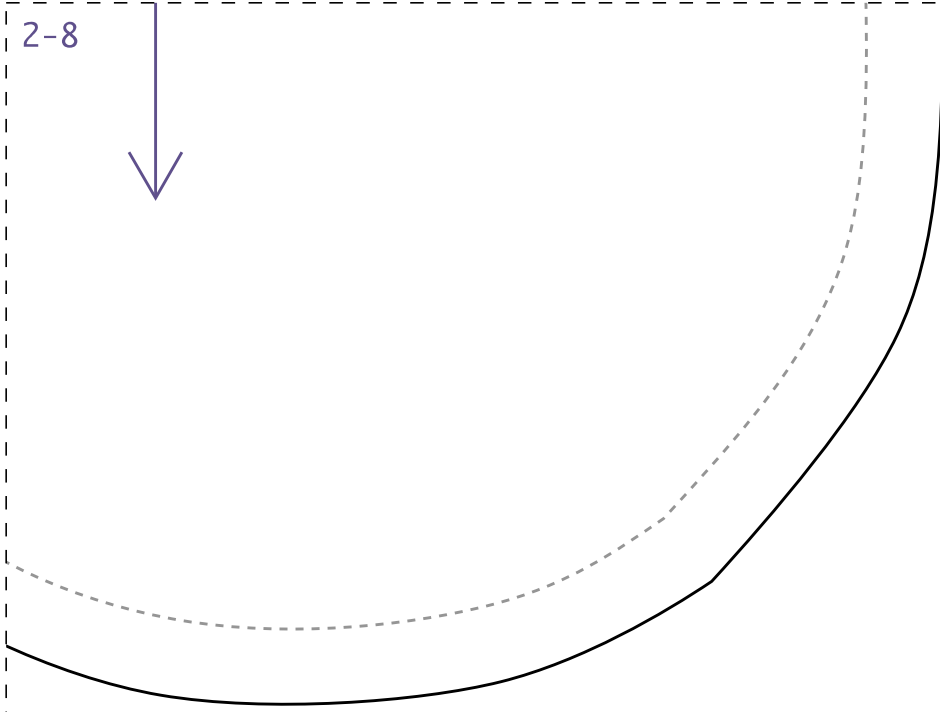




Espelho bolso 2x-52

IDD20

2-8



3-8

BOLSO 2X-52

