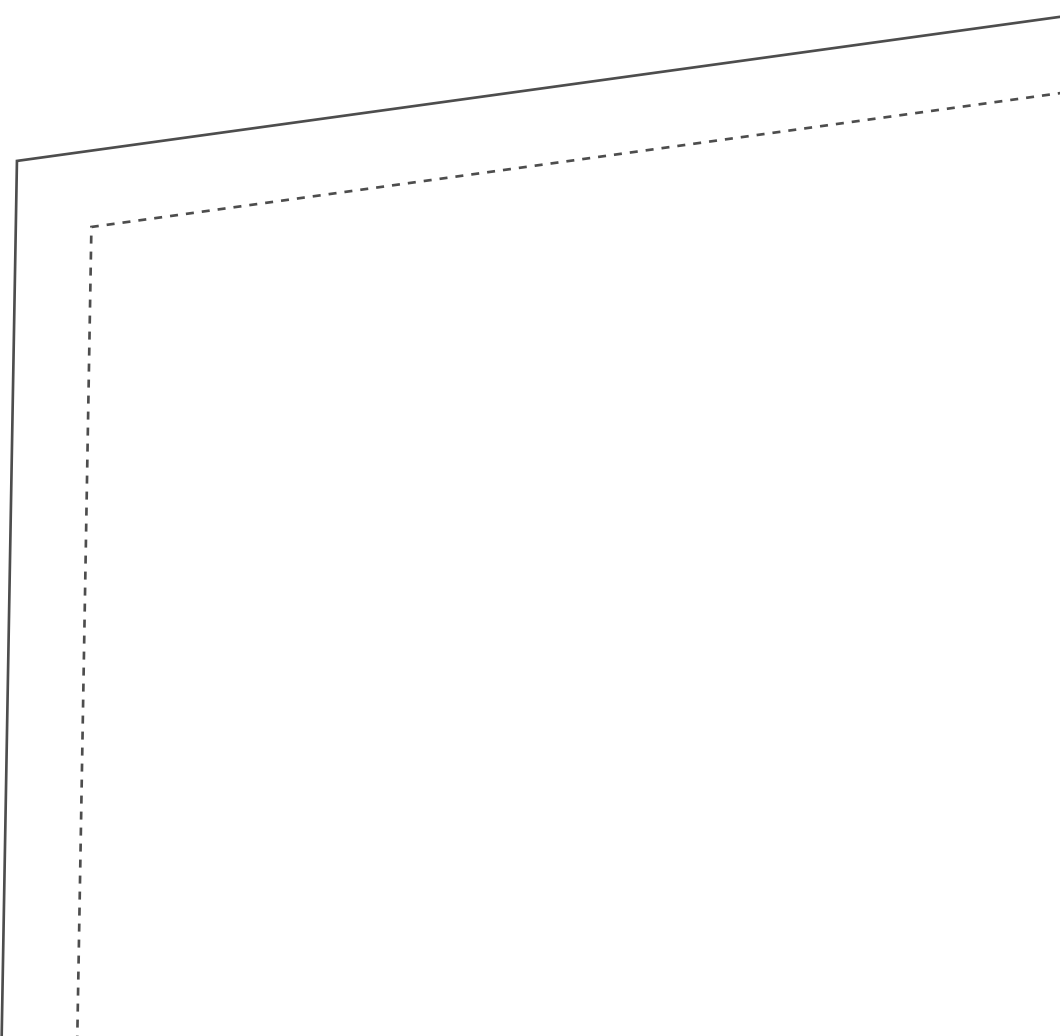
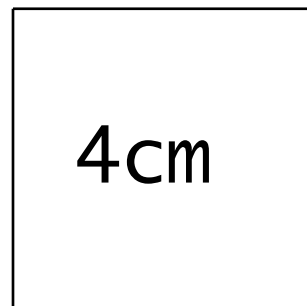
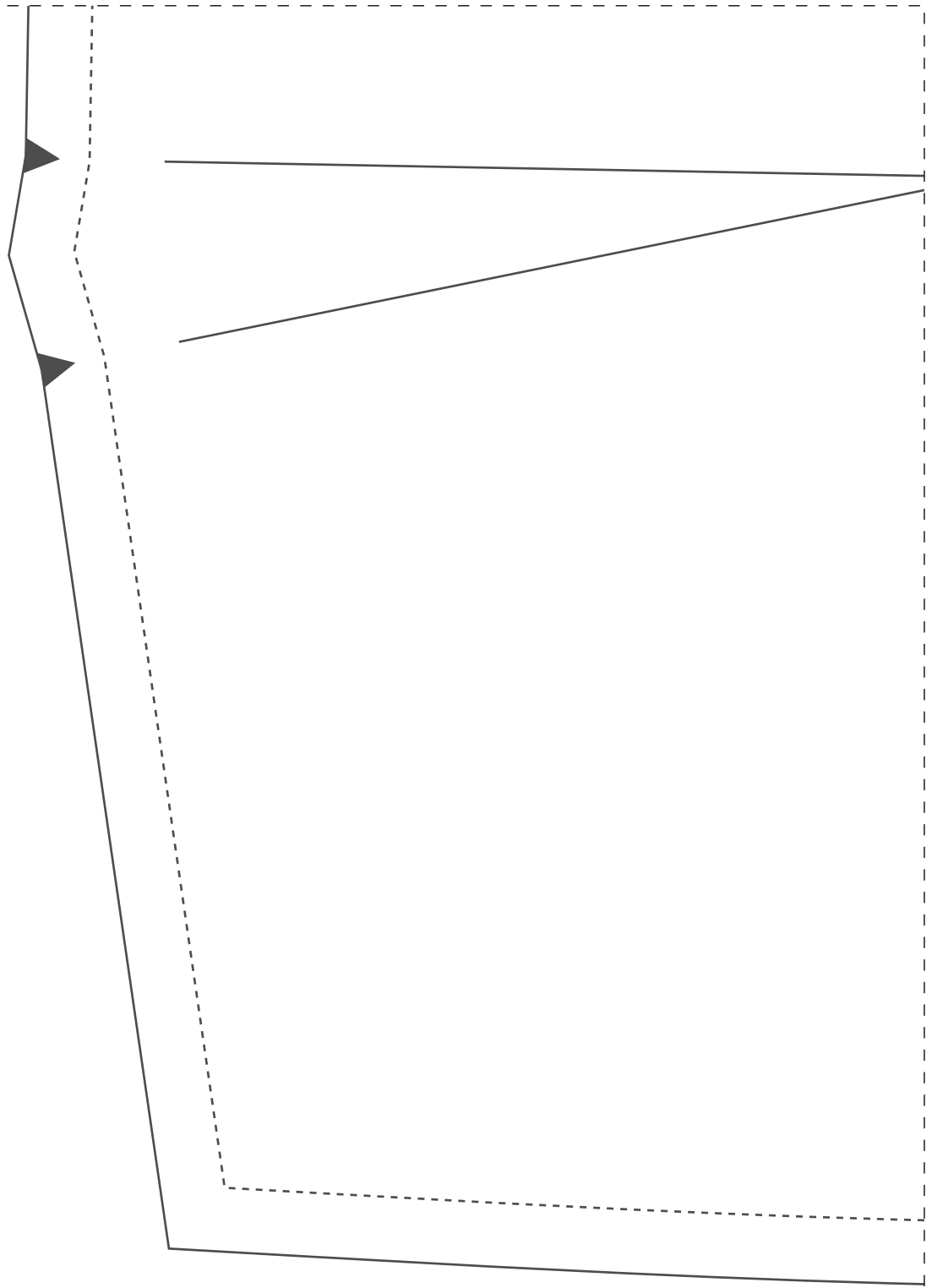


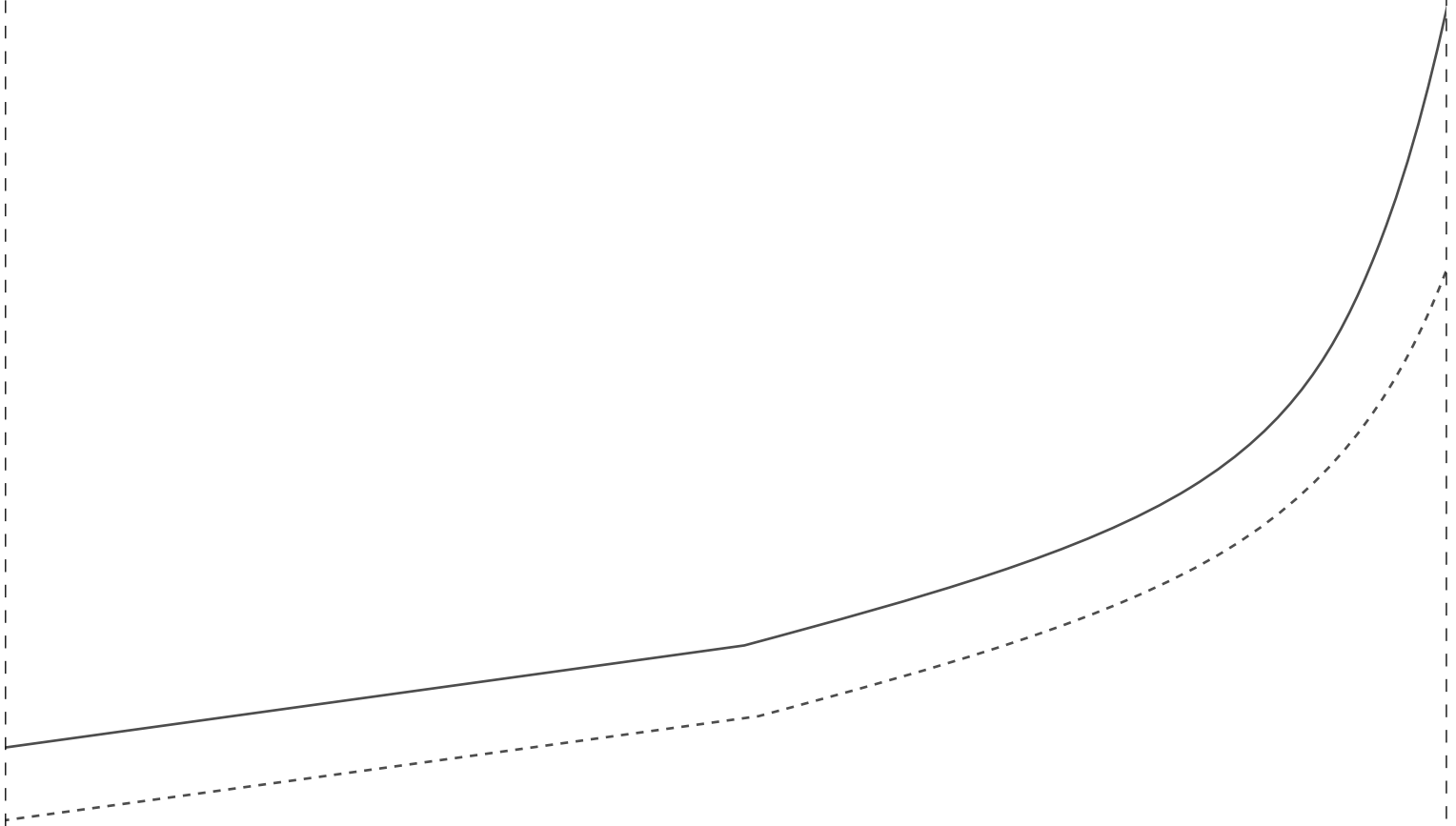
Teste de impressão: ao imprimir seu molde, meça o quadrado que deverá ter a mesma medida informada (4cm), assim você se certificará que ele foi impresso no tamanho correto.



2-1

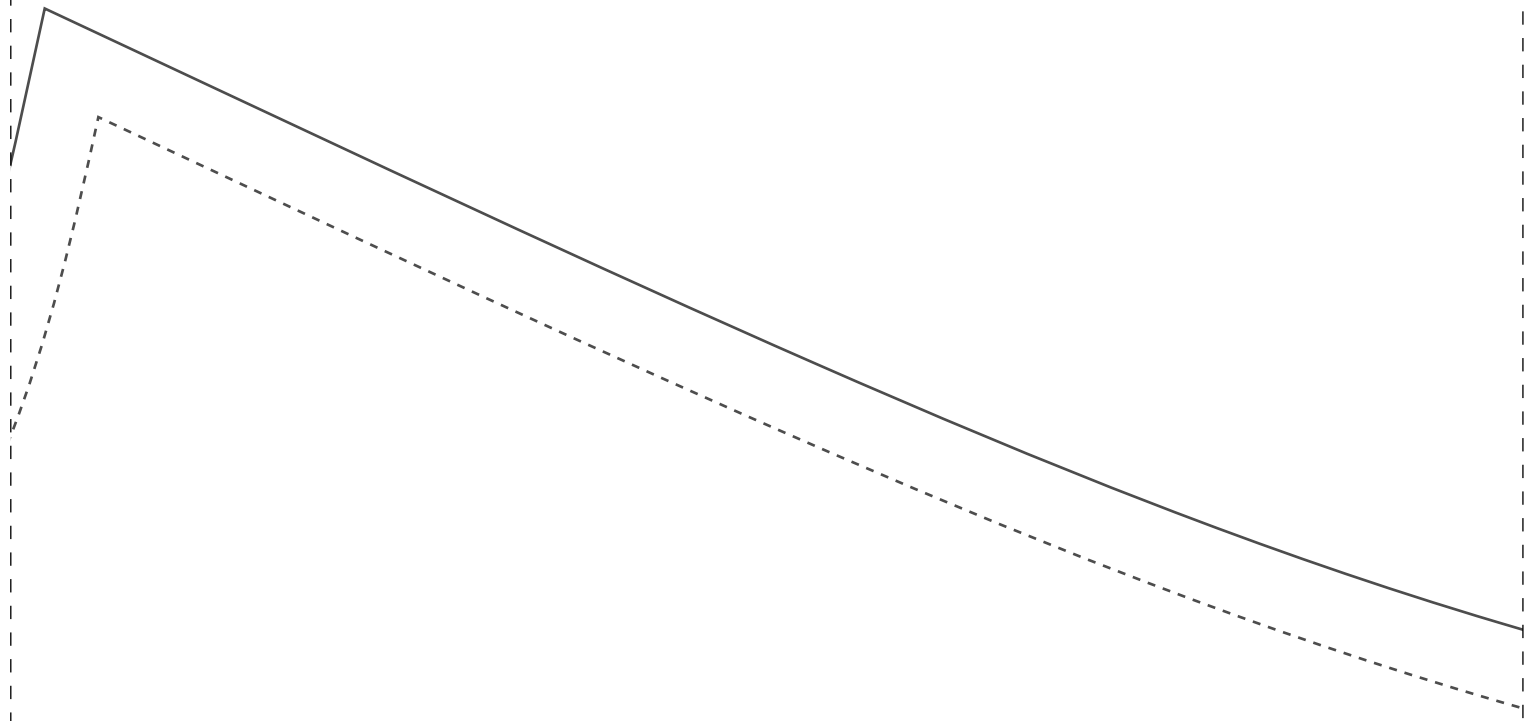


1-2





1-3

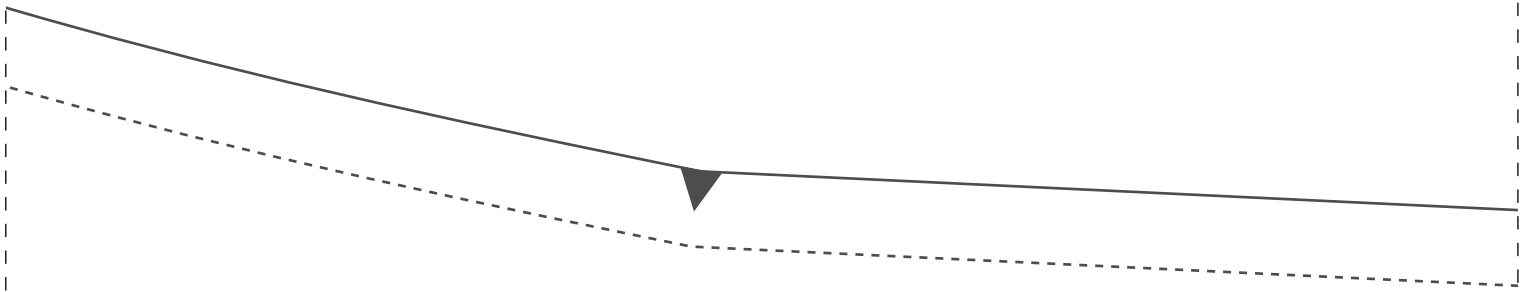


trace

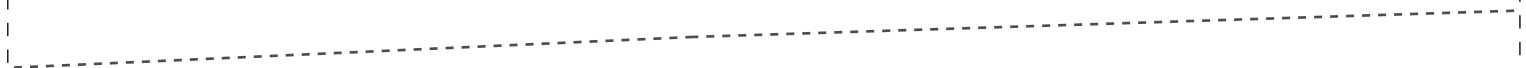
Ficha Técnica:

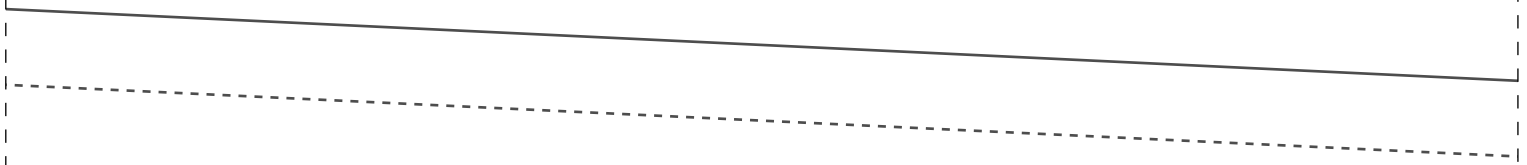
- Tecido Plano 1,4m de largura
- Linho, gabardine, alfaiataria ou similares
- Bolso faca
- Cós entretelado (opcional)
- 1,6m para os tamanhos 36 ao 42
- 2m para os tamanhos 44 ao 54
- 1 zíper comum 15cm

1-4



line 2x

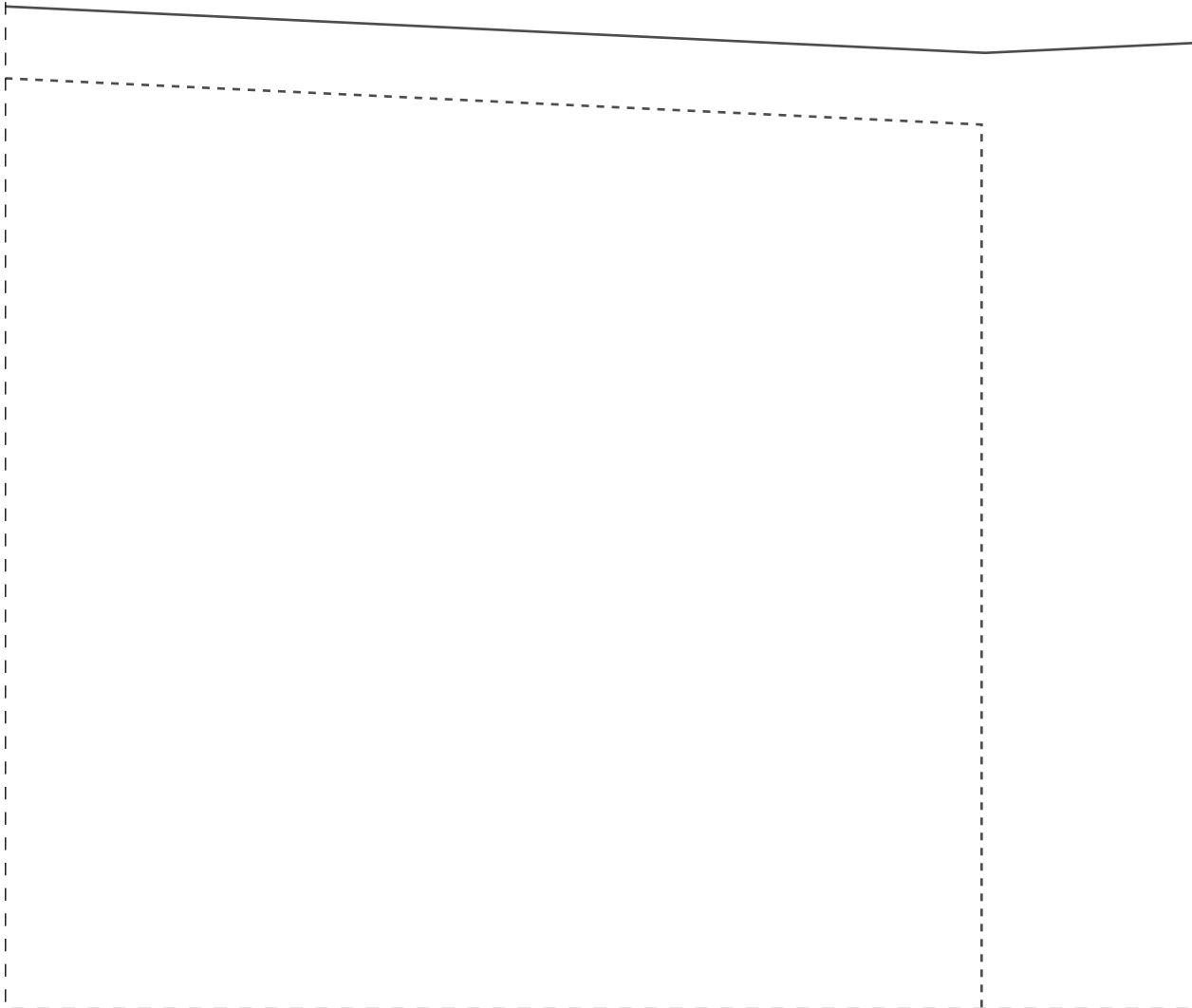


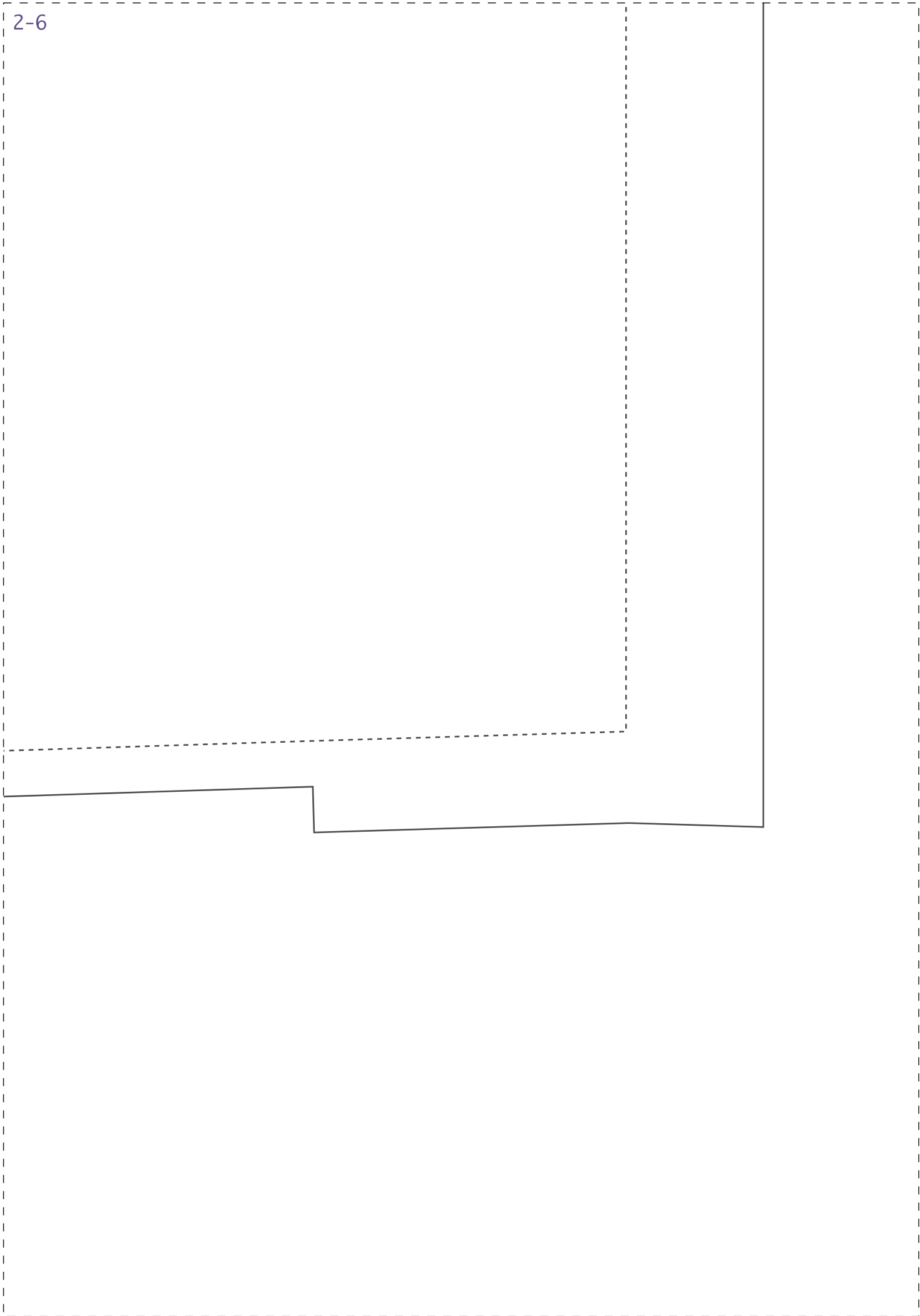


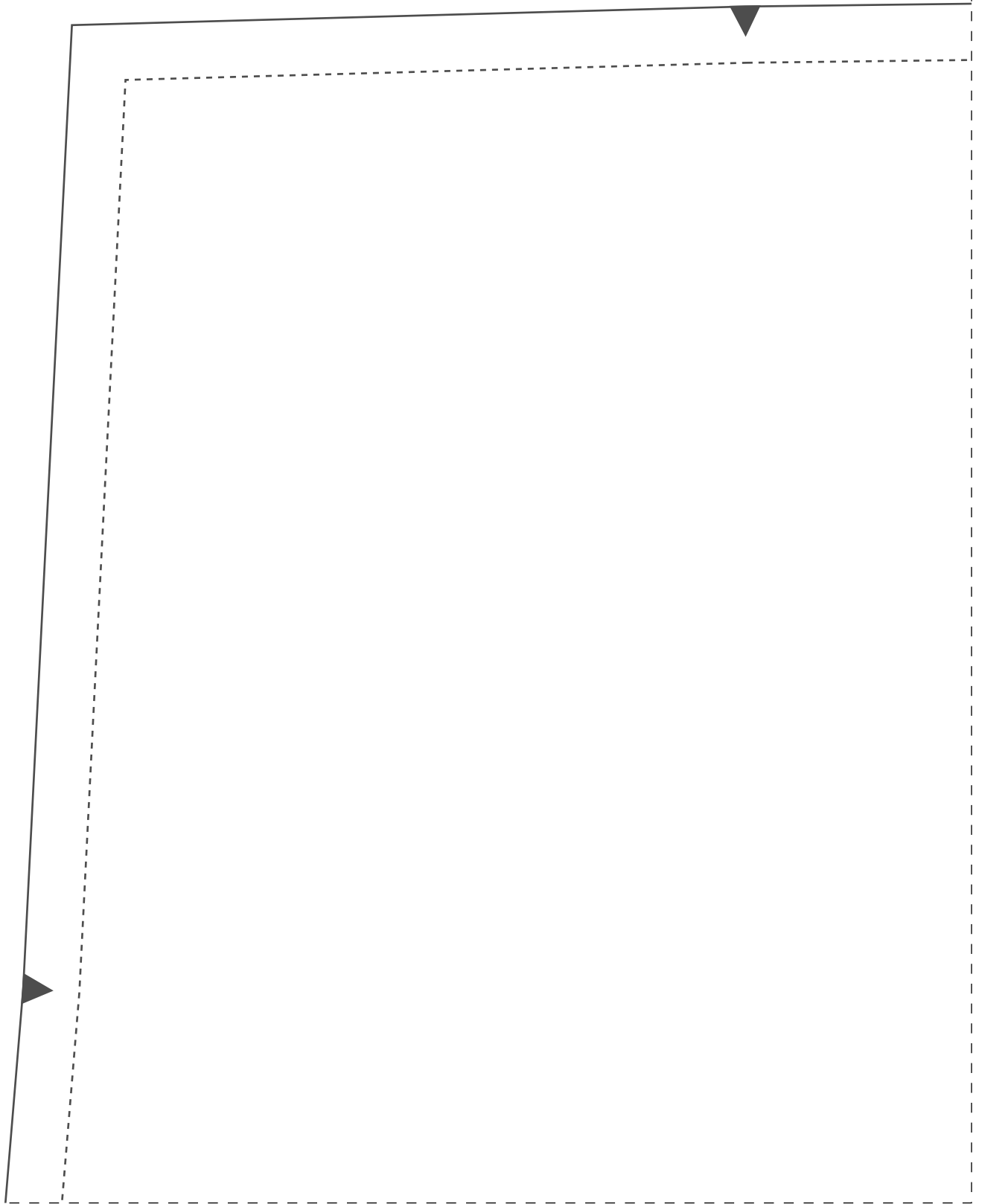
2-5

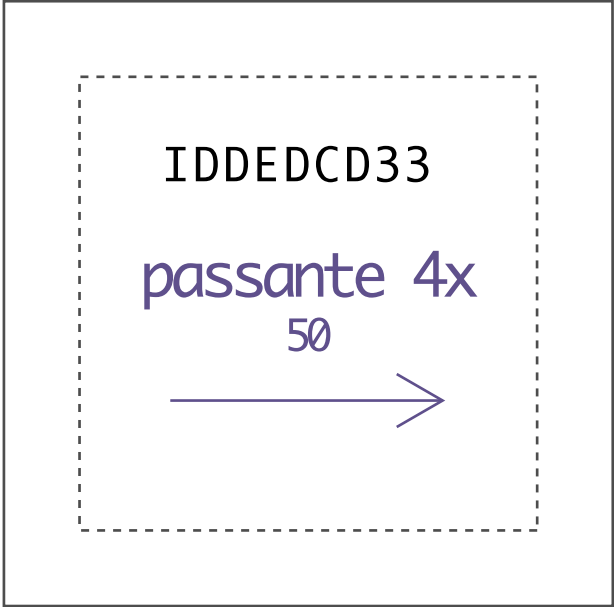
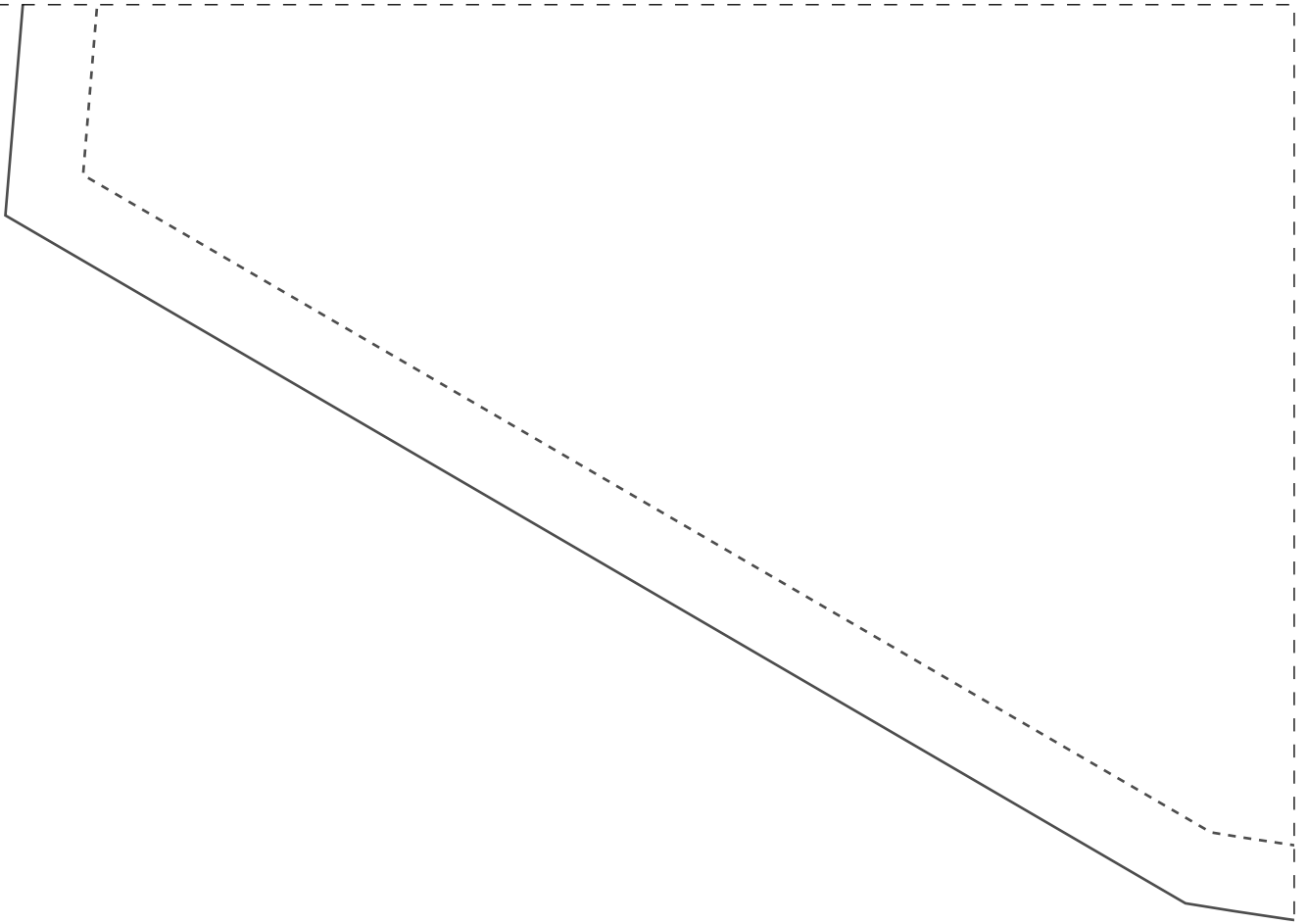


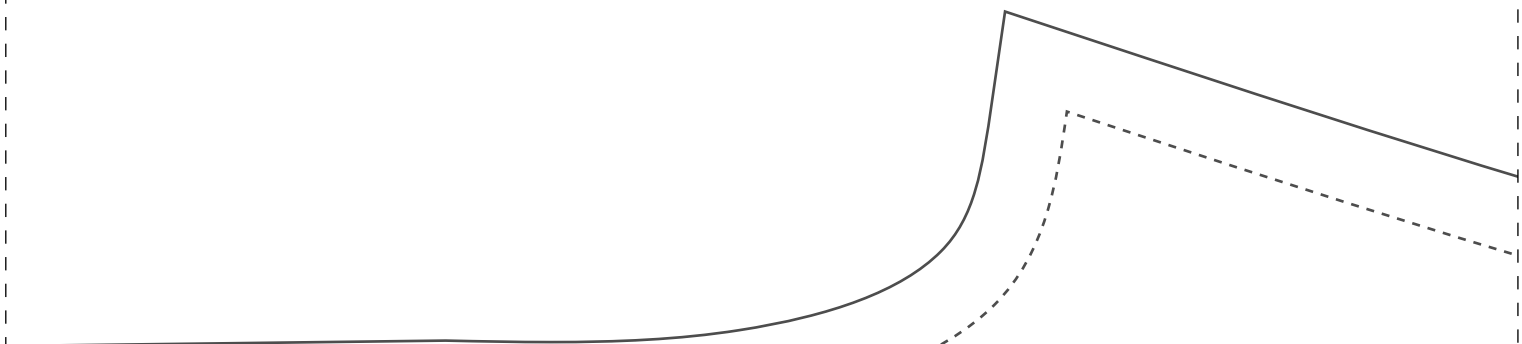
IDDED CD33





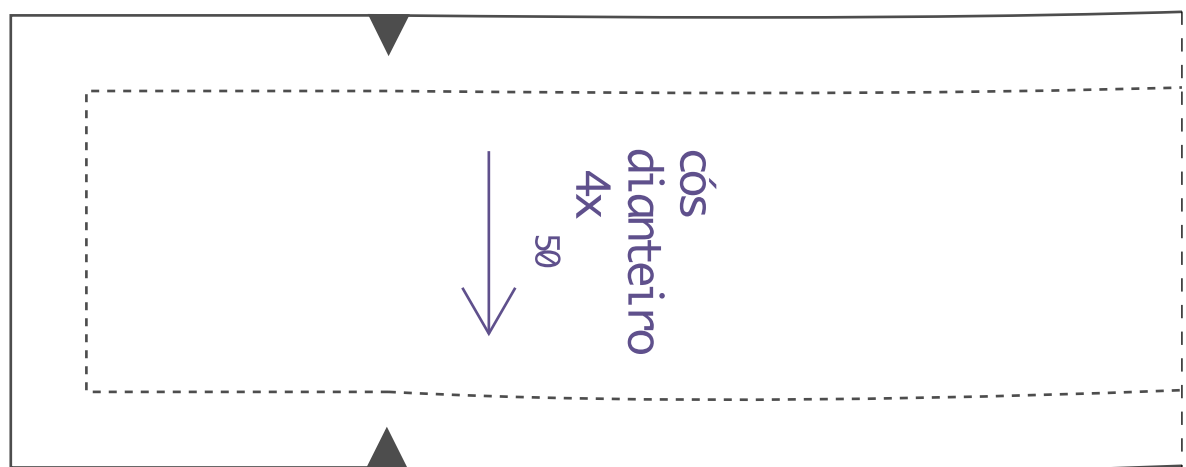
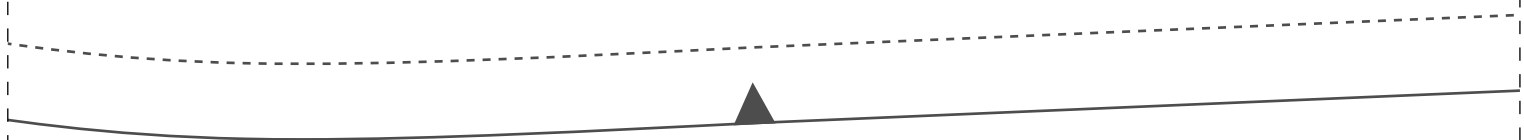




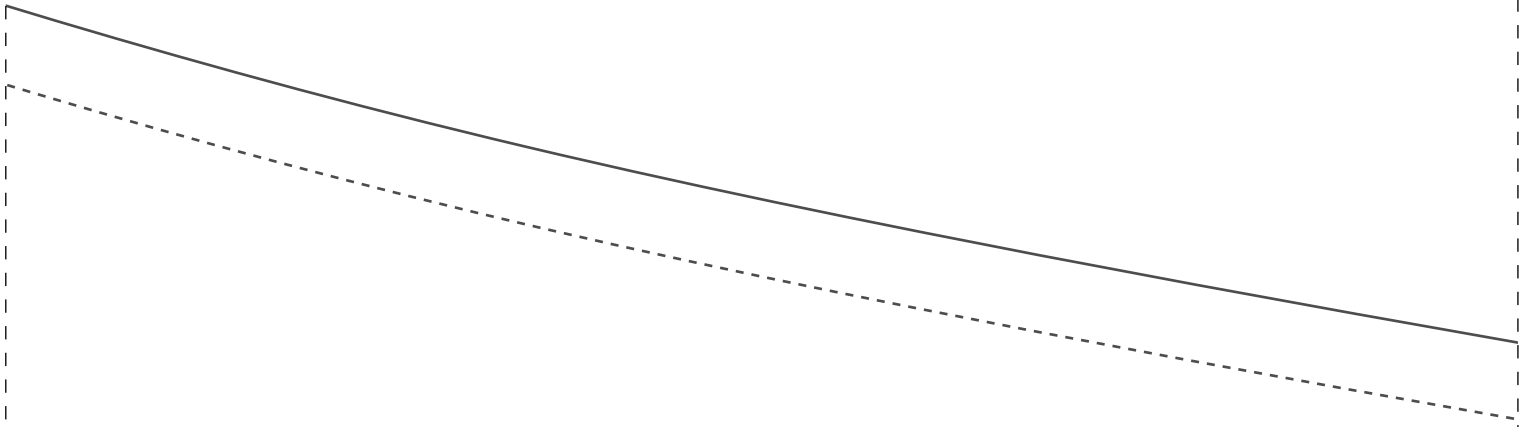


Instituto Diana Demar
Escola de Costurar
IDD Fashion Day
Calça Feminina Alfaia

PROIBIDA REVENDA



1-9



dianteiro 2x
50

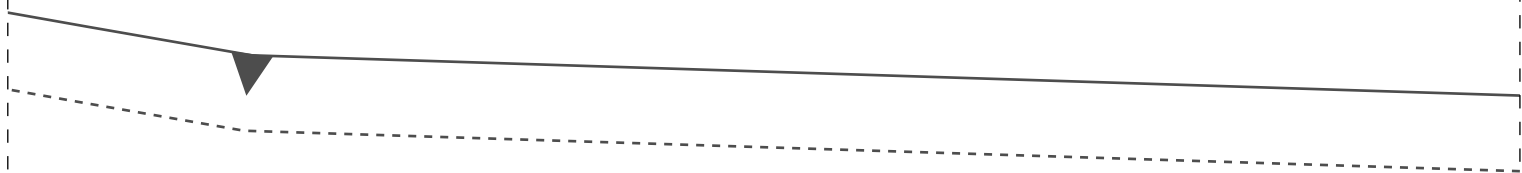
2-9

chi

taria

IDDED CD33

1-10

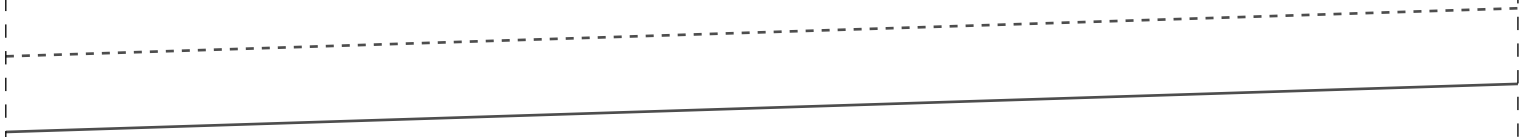


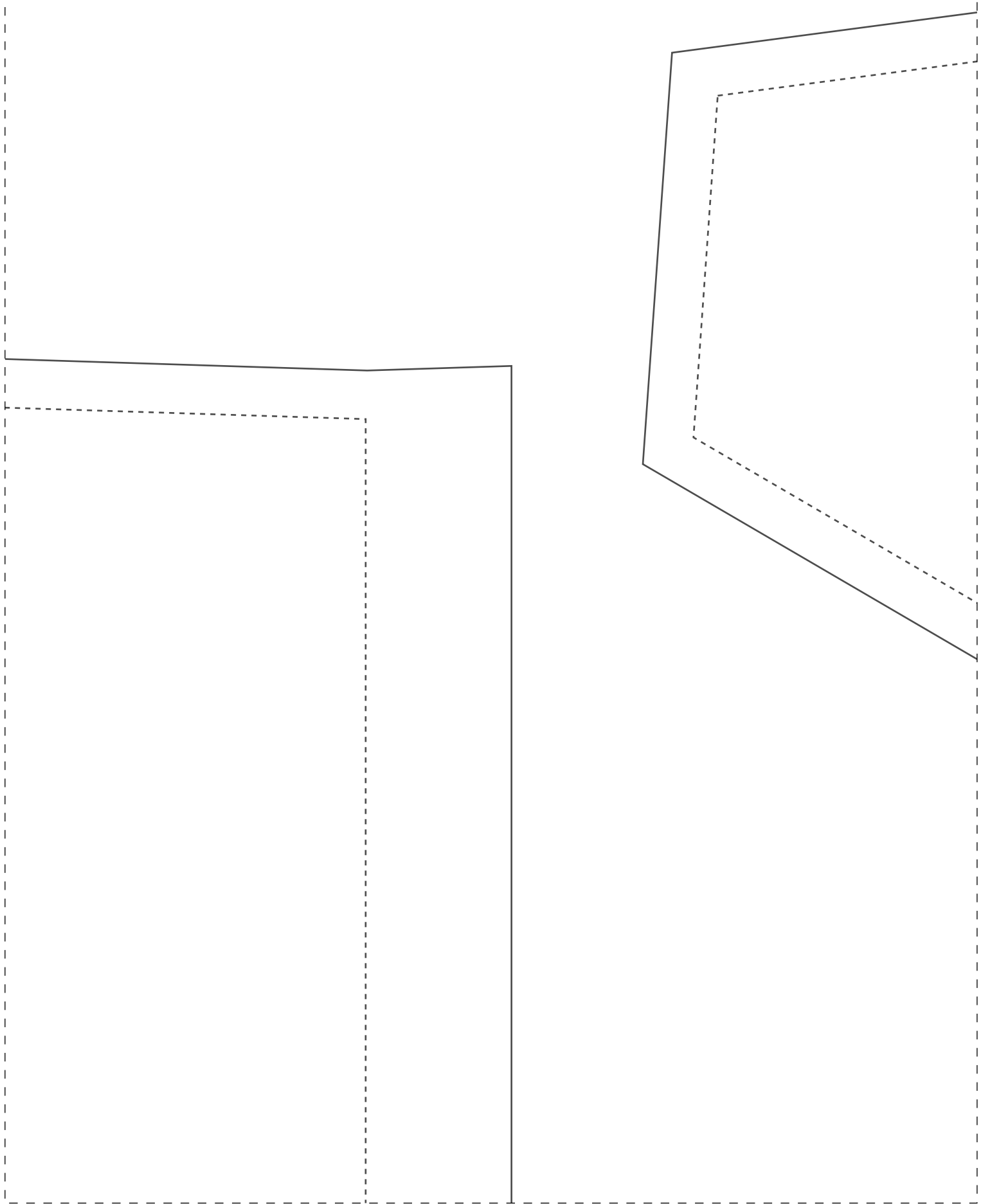
IDDED CD33



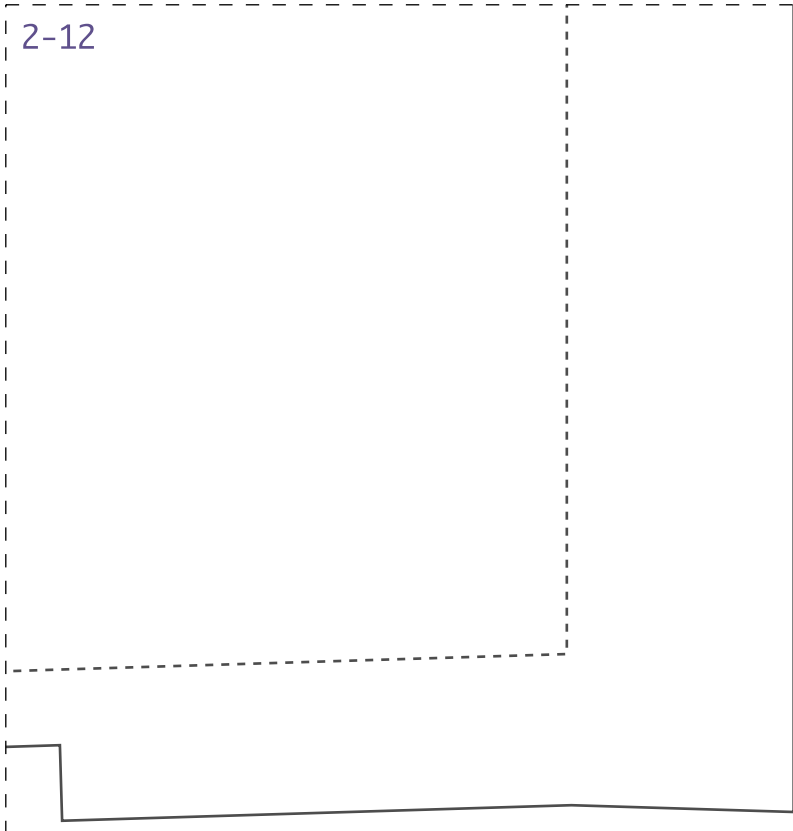
1-11



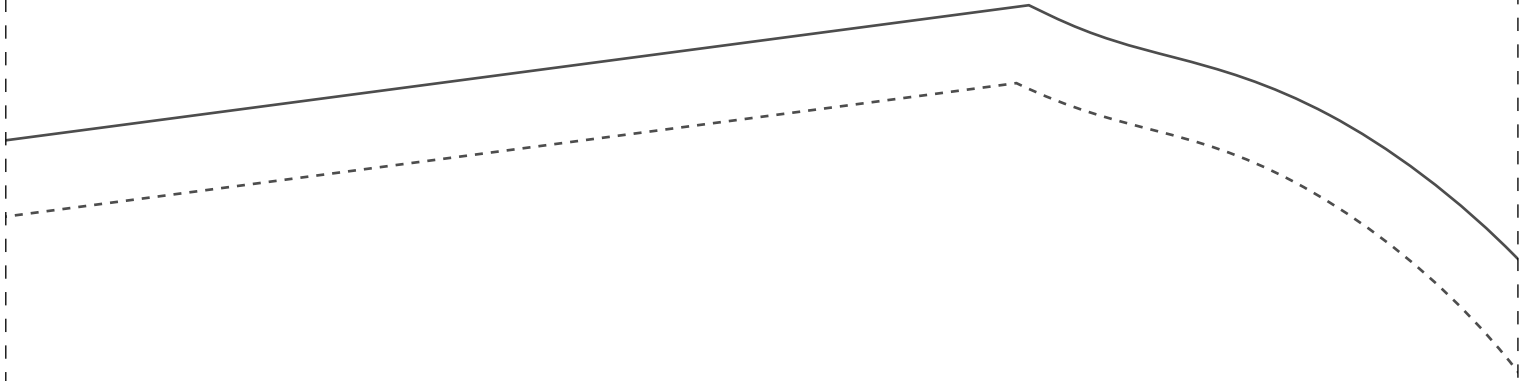




2-12



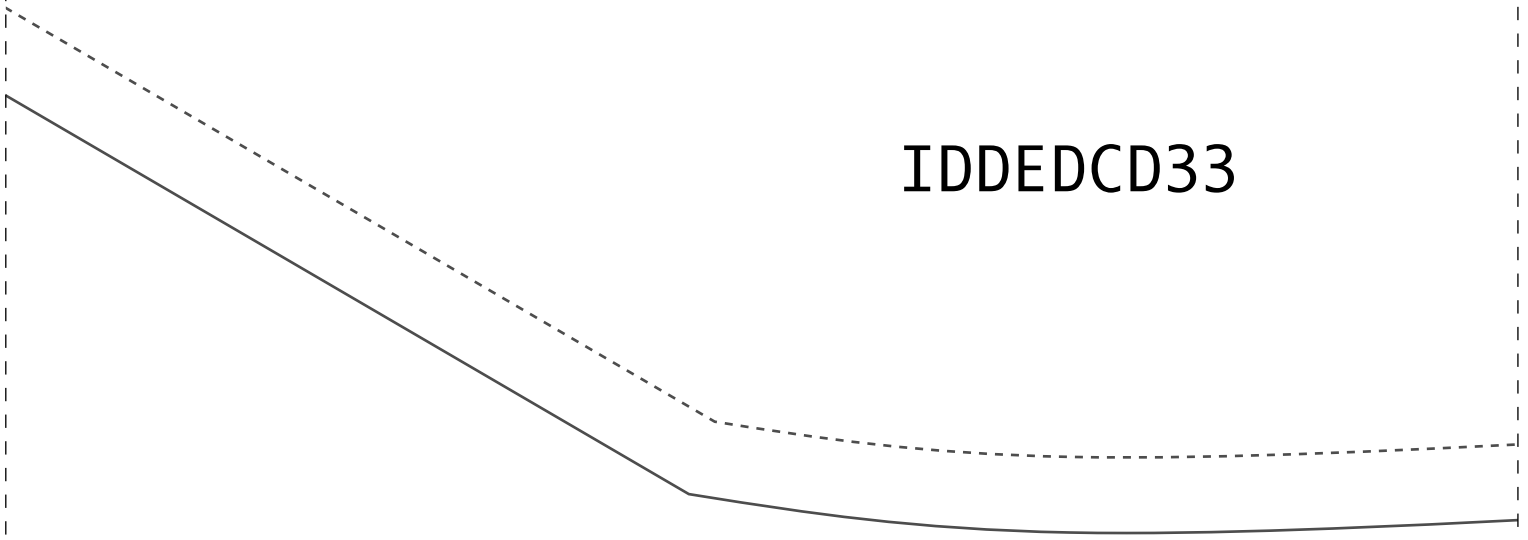
1-13

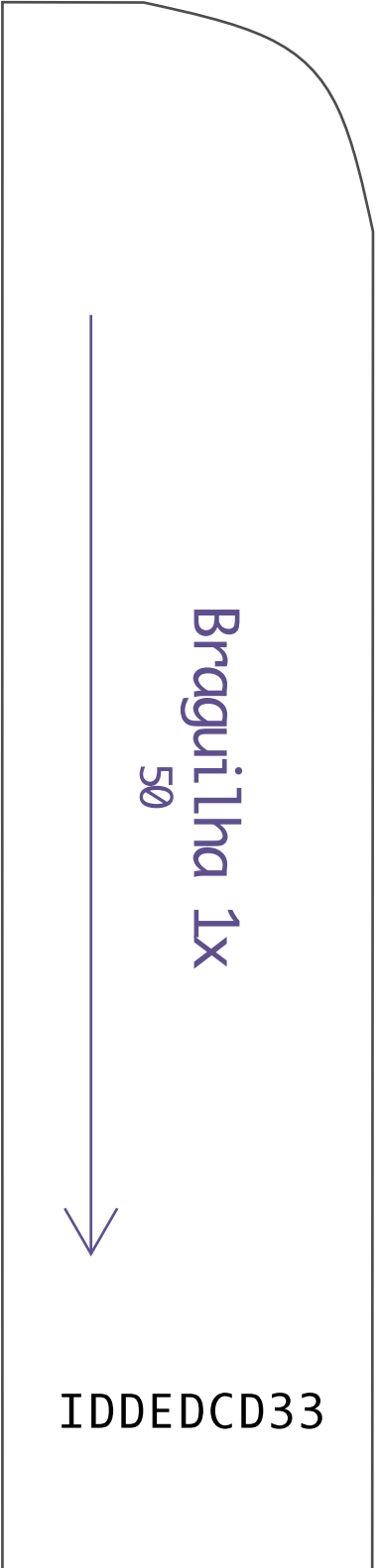


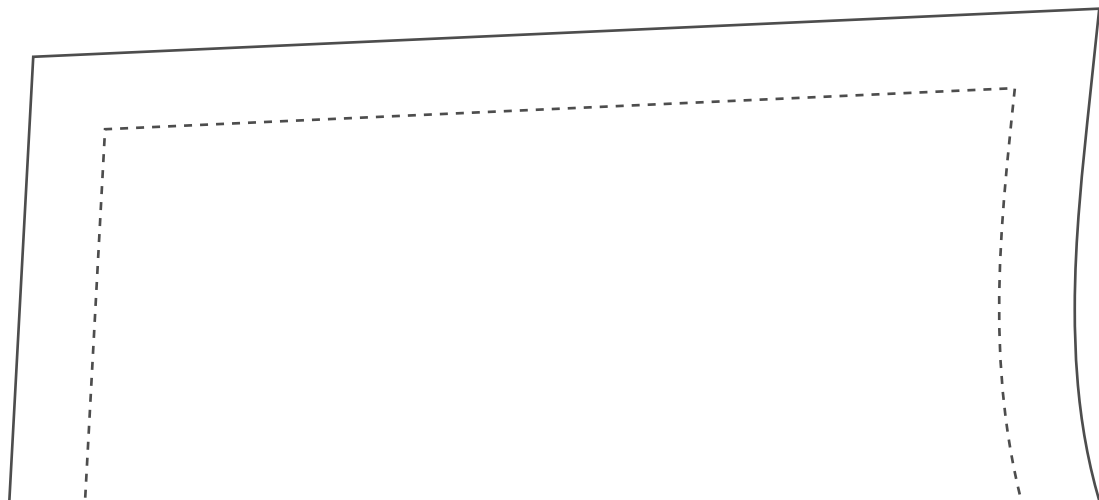
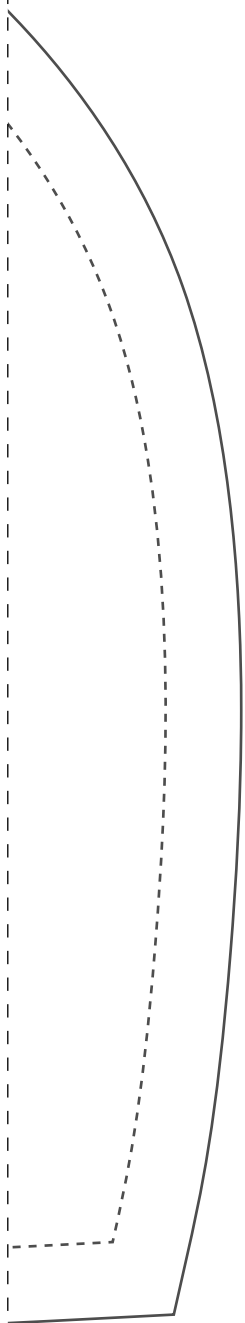
bolso 2x
50

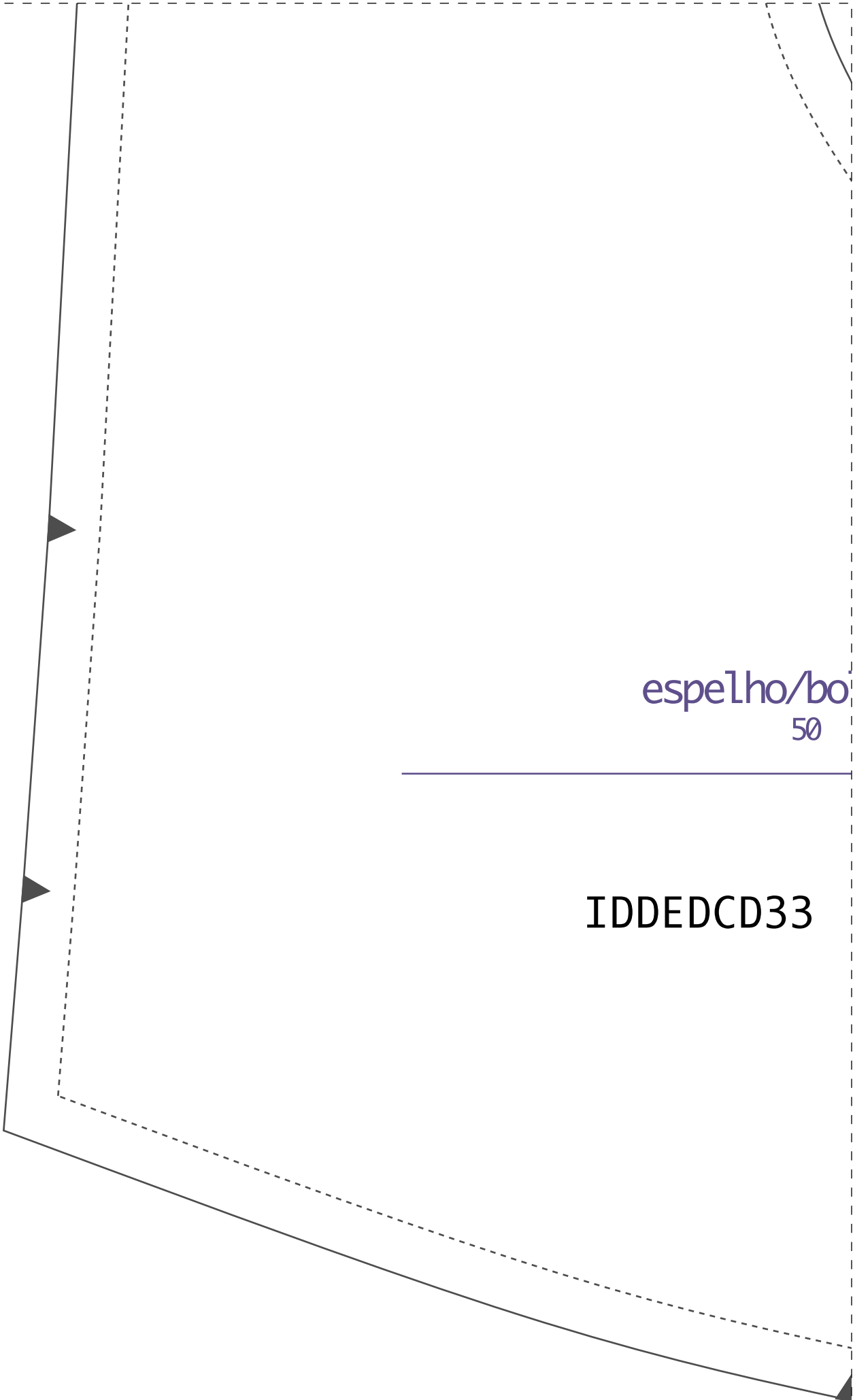


IDDED CD33



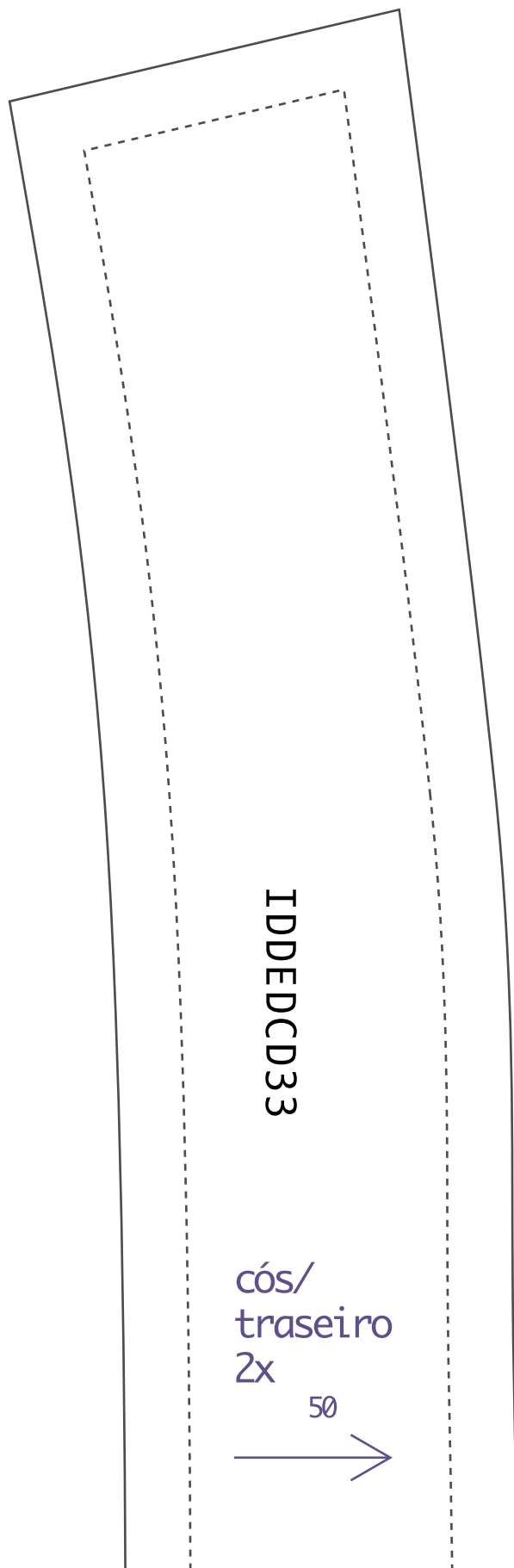






espelho/bo
50

IDDED33



2-15

dobra

Iso 2x

